

Product datasheet for **MG226124**

Rtn4 (NM_194054) Mouse Tagged ORF Clone

Product data:

Product Type:	Expression Plasmids
Product Name:	Rtn4 (NM_194054) Mouse Tagged ORF Clone
Tag:	TurboGFP
Symbol:	Rtn4
Synonyms:	1110020G17Rik; AA407876; AA409940; AA960376; ASY; C130026I10Rik; mKIAA0886; mKIAA4153; NgA
Mammalian Cell Selection:	Neomycin
Vector:	pCMV6-AC-GFP (PS100010)
E. coli Selection:	Ampicillin (100 ug/mL)
ORF Nucleotide Sequence:	>MG226124 representing NM_194054 Red=Cloning site Blue=ORF Green=Tags(s)

TTTTGTAATACGACTCACTATAGGGCGGCCGGAATTCGTCGACTGGATCCGGTACCGAGGAGATCTGCC
GCC**GCGATCGCC**

ATGGAAGACATAGACCAGTCGTCGCTGGTCTCCTCGTCCGCGGATAGCCCGCCCCGGCCCCCGCCGCTT
TCAAGTACCAGTTCGTGACGGAGCCCGAGGACGAGGAGGACGAGGAAGACGAGGAGGAGGAGGAGGACGA
CGAGGACCTGGAGGAATTGGAGGTGCTGGAGAGGAAGCCCGCAGCCGGGCTGTCCGCGGCTCCGGTGCC
CCCCCGCCGCACCGCTGCTGGACTTCAGCAGCGACTCGGTGCCCGCCCGCCCGGGCCGCTGCCGG
CCGCGCCCCCACCGCCCTGAGAGGCAGCCGTCCTGGGAACGCAGCCCCGCGGCGTCCGCGCCATCCCT
GCCGCCCCGCTGCCGAGTCTGCCCTCCAAGCTCCCGGAGGACGACGAGCCTCCAGCGCGGCTCCGGCG
CCAGCCGCGCGAGCCCCCTAGCGGAGCCCGCCGCGCCCCCTCCAGCGCGCCGCGCCCAAGCGCAGGG
GCTCGGGCTCAGTGGATGAGACCTTTTTGCTCTTCTGCTGCATCTGAGCCTGTGATACCTCCTCTGC
AGAAAAATTATGGATTTGAAGGAGCAGCCAGGTAACACTGTTTTGCTCTGGTCAAGAGGATTTCCATCT
GTCCTGTTGAAACTGCTGCCTCTCTTCTTCTATCTCCTCTCAACTGTTTCTTTAAAGAACACG
GATACCTTGTTAACTTATCAGCAGTGGCATCCACAGAAGAACTATTGAAGAACTTTAAATGAAGCTTC
TAGAGAATTGCCAGAGGGCAACAAATCCATTTGTAATAGAGAGTCAGCAGATTTTCAGTATTAGAA
TACTCAGAAATGGGATCATCTTTCAATGGCTCCCCAAAAGGAGAGTCAGCCATGTTAGTAGAAAACACTA
AGGAAGAAGTAATTGTGAGGAGTAAAGACAAAGAGGATTTAGTTTGTAGTGCAGCCCTTCATAATCCACA
AGAGTCACCTGCGACCCCTACTAAAGTGGTTAAGAAGACGGAGTTATGTCTCCAGAAAAGACAATGGAC
ATTTTTAATGAAATGAAATGTCAGTGGTAGCACCTGTGAGGGAAGAGTATGCAGATTTTAAGCCATTTG
AACAAAGCATGGGAAGTGAAGATACTTATGAGGGAAGTAGGGATGTGCTGGCTGTAGAGCTAATATGGA
AAGTAAAGTGGACAAAAATGCTTTGAAGATAGCCTGGAGCAAAAAGGTATGGGAAGGATAGTGAAGC
AGAAATGAGAATGCTTCTTTCCCGAGGCCCGAGAACTTGTGAAGGACGGCTCCAGAGCGTACATCACCT
GTGATTCCTTTAGCTCAGCAACCGAGAGTACTGCAGCAAAACATTTTCCCTGTGCTAGAAGATCACACTTC



AGAAAACAAAACAGATGAAAAAAAAATAGAAGAAAGGAAGGCCAAATTATAACAGAGAAGACTAGCCCC
AAAACGTCAAATCCTTTCCTTGTAGCAATACATGATTCTGAGGCAGATTATGTCACAACAGATAATTTAT
CAAAGGTGACTGAGGCAGTAGTGGAACCATGCCTGAAGGTCTAACGCCAGATTTAGTTCAGGAAGCATG
TGAAAGTGAACGAACGAAGCCACAGGTACAAAGATTGCTTATGAAACAAAAGTGGACTTGGTCCAGACA
TCAGAAGCTATAACAAGAGTCAATTTACCCACAGCACAGCTTTGCCCATCATTTGAGGAAGCTGAAGCAA
CTCCGTACCAGTTTTGCCTGATATTGTTATGGAAGCGCCATTAATTTCTCTCCTCCAAGCACTGGTGC
TTCTGTAGCGCAGCCAGTGCATCCCCACTAGAAGTACCGTCTCCAGTTAGTTATGACGGTATAAAGCTT
GAGCCTGAAAATCCCCACCATATGAAGAAGCCATGAGTGTAGCACTAAAAACATCGGACTCAAAGGAAG
AAATTAAGAGCCTGAAAGTTTTAATGCAGCTGCTCAGGAAGCAGAAGCTCCTTATATATCCATTGCATG
TGATTTAATTAAGAAAACAAAGCTCTCCACTGAGCCAAGTCCAGAGTTCTCTAATTATTCAGAAATAGCA
AAATTTGAGAAGTCGGTGCCTGATCACTGTGAGCTCGTGGATGATTCCTCACCCGAATCTGAACCAGTTG
ACTTATTTAGTGATGATTCATTTCTGAAGTCCCACAAACACAAGAGGAGGCTGTGATGCTAATGAAGGA
GAGTCTCACTGAAGTGTCTGAGACAGTAACACAACACAACATAAGGAGAGACTTAGTGCTTCACCTCAG
GAGGTAGGAAAGCCATATTTAGAGTCTTTTCAGCCCAATTTACATATTACAAAAGATGCTGCATCTAATG
AAATTC AACATTGACAAAAAGGAGACAATTTCTTTGCAAATGGAAGAGTTTAATACTGCAATTTATTC
CAATGATGACTTACTTTCTTCTAAGGAAGACAAAATGAAAGAAAGTGAACATTTTCCGATTCATCTCCC
ATTGAGATAATAGATGAGTTTCCACATTTGTCTAGTGCTAAAGATGATTCTCCTAAGGAGTACACTGACC
TAGAAGTATCCAACAAAAGTGAATTGCTAATGTCCAGAGCGGGGCCAATTCGTTGCCTTGCTCAGAATT
GCCCTGTGACCTTTCTTCAAGAATACATATCCTAAAGATGAAGCACATGTCTCAGATGAATTCCTCAAA
AGTAGGTCCAGTGATCTAAGGTGCCCTTATTGCTTCAAATGTTTCTGCTTTGGAATCTCAAATAGAAA
TGGGCAACATAGTTAAACCCAAAGTACTTACGAAAGAAGCAGAGGAAAAACTTCTTCTGATACAGAGAA
AGAGGACAGATCCCTGACAGCTGTATTGTCAGCAGAGCTGAATAAAACTTCAGTTGTTGACCTCCTGTAC
TGGAGAGACATTAAGAAGACTGGAGTGGTGTGGTGGCCAGCTTATTCTGCTGCTGTCTCTGACAGTGT
TCAGCATTGTGAGTGAACGGCCTACATTGCCTTGGCCCTGCTCTGTGACTATCAGCTTTAGGATATA
TAAGGGTGTGATCCAAGCTATCCAGAAATCAGATGAAGGCCACCCATTCAGGGCATATTTGGAATCTGAA
GTTGCCATATCAGAGGAATTGGTTCAGAAATATAGTAATTCTGCTCTTGGTCATGTGAACAGCACAAATA
AAGAATTGAGGCGTCTCTTCTTAGTTGATGATTTAGTTGATTCCCTGAAGTTTGCAGTGTGATGTGGGT
ATTTACTTACGTTGGTGCCTTGTCAATGGTTTGACACTACTGATTTTAGCTCTGATCTCACTCTTCAGT
ATTCTGTTATATATGAACGGCATCAGGCGCAGATAGATCATTATCTAGGACTTGCAAACAAGAGCGTTA
AGGATGCCATGGCCAAAATCCAAGCAAAAATCCCTGGATTGAAGCGCAAAGCAGAA

ACGCGTACGCGGCCGCTCGAG - GFP Tag - GTTTAA

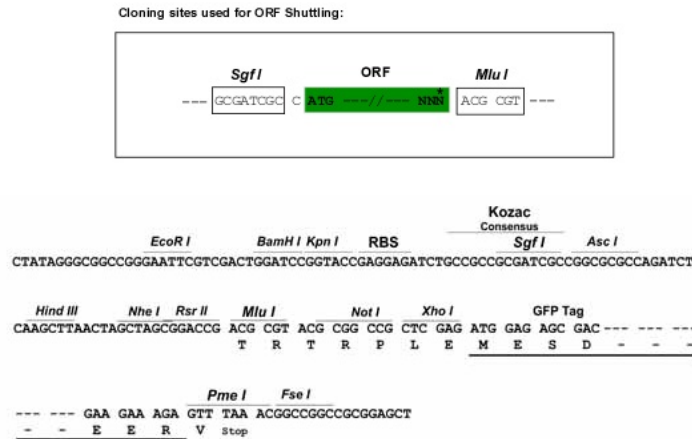
Protein Sequence: >MG226124 representing NM_194054
 Red=Cloning site Green=Tags(s)

MEDIDQSSLVSSSADSPRPPPAFKYQFVTEPEDEEEDDEEEEDDEELEELEVLERKPAAGLSAAPVP
 PAAAPLLDFSSDSVPPAPRGPLPAAPTAPERQPSWERSPAASAPSLPPAAAVLPSKLPEDDEPPARPPA
 PAGASPLAEPAAPSTPAAPKRRGSGSVDELTFALPAASEPVIPSSAEKIMDLKEQPGNTVSSGQEDFPS
 VLFETAASLPSLSTVSVFKEHGYLEGNLSAVASTEGETIEETLNEASRELPERATNPFVNRESAEFVLE
 YSEMSSFNKSGPKGESAMLVENTKEEIVRSKDKEDLVCSAALHNPQESPATLTKVVKEDGVMSPEKTM
 IFNEMKMSVVPVREEYADFKPFEQAWEVKDTYEGSRDVLAAANMESKVDKCFEDSLEQKGHGKDS
 RNENASFRTPPELVKDGSRAYITCDSFSSATESTANIFPVLEDHTSENKTDEKKIEERKAQIITEKTS
 KTSNPFVVAIHDSEADYVTTDNLKVTEAVVATMPEGLTDLVQEAACESELNEATGKTIAYETKVDLVQT
 SEAIQESIYPTAQLCPSFEEAEATPSPVLPDIVMEAPLNLLPSTGASVAQPSASPLEVPSVSYDGIK
 EPENPPPYEEAMSVALKTSDSKEEIKEPEFNAAQAEAPYISIACDLIKETKLPSTEPSPEFSNYSEIA
 KFEKSVDPHCELVDSSPESEPVDFSDSIPVVPQTQEEAVMLMKESELTEVSETVTQHKHKERLSASPQ
 EVGKPYLESFQPNLHITKDAASNEIPTLTKKETISLQMEEFNTAIYSNDDLSSKEDKMKESETFSDSSP
 IEIIDEFPTFVSAKDDSPKEYTDLEVSNKSEIANVQSGANSLPCSELPCDLDFKNTYPKDEAHVSD
 SKSRSSVSKVPLLLPNVSALESQIEMGNIVKPKVLTKEAEEKLPDTEKEDRSLTAVLSAELNKTSVVDLLY
 WRDIKKTGVVFGASLFLLLSLTVFSIVSVTAYIALALLSVTISFRYKGVIAIQKSDGHPFRAYLESE
 VAISEELVQKYSNSALGHVNSTIKELRRLFLVDDLVDLKFVLMVFTYVGFALFNGLTLLILALISLFS
 IPVIYERHQAQIDHYLGLANKSVKDAMAKIQAQIPGLKRKAE

TRTRPLE - GFP Tag - V

Restriction Sites: SgfI-MluI

Cloning Scheme:



ACCN: NM_194054

ORF Size: 3486 bp

OTI Disclaimer: Due to the inherent nature of this plasmid, standard methods to replicate additional amounts of DNA in E. coli are highly likely to result in mutations and/or rearrangements. Therefore, OriGene does not guarantee the capability to replicate this plasmid DNA. Additional amounts of DNA can be purchased from OriGene with batch-specific, full-sequence verification at a reduced cost. Please contact our customer care team at custsupport@origene.com or by calling 301.340.3188 option 3 for pricing and delivery.

The molecular sequence of this clone aligns with the gene accession number as a point of reference only. However, individual transcript sequences of the same gene can differ through naturally occurring variations (e.g. polymorphisms), each with its own valid existence. This clone is substantially in agreement with the reference, but a complete review of all prevailing variants is recommended prior to use. [More info](#)

OTI Annotation: This clone was engineered to express the complete ORF with an expression tag. Expression varies depending on the nature of the gene.

Components: The ORF clone is ion-exchange column purified and shipped in a 2D barcoded Matrix tube containing 10ug of transfection-ready, dried plasmid DNA (reconstitute with 100 ul of water).

Reconstitution Method:

1. Centrifuge at 5,000xg for 5min.
2. Carefully open the tube and add 100ul of sterile water to dissolve the DNA.
3. Close the tube and incubate for 10 minutes at room temperature.
4. Briefly vortex the tube and then do a quick spin (less than 5000xg) to concentrate the liquid at the bottom.
5. Store the suspended plasmid at -20°C. The DNA is stable for at least one year from date of shipping when stored at -20°C.

RefSeq: [NM_194054.3](#), [NP_918943.1](#)

RefSeq Size: 6165 bp

RefSeq ORF: 3489 bp

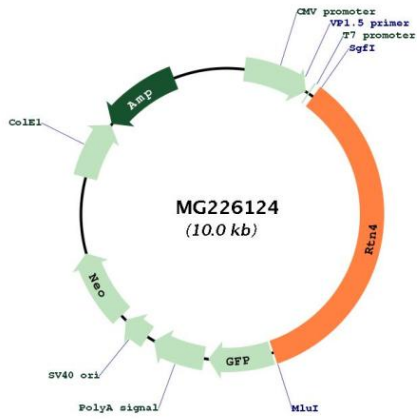
Locus ID: 68585

UniProt ID: [Q99P72](#)

Cytogenetics: 11 A3.3

Gene Summary: Required to induce the formation and stabilization of endoplasmic reticulum (ER) tubules. They regulate membrane morphogenesis in the ER by promoting tubular ER production. They influence nuclear envelope expansion, nuclear pore complex formation and proper localization of inner nuclear membrane proteins. However each isoform have specific functions mainly depending on their tissue expression specificities.[UniProtKB/Swiss-Prot Function]

Product images:



Circular map for MG226124