

Product datasheet for **MG226109**

Rtn4 (NM_024226) Mouse Tagged ORF Clone

Product data:

Product Type: Expression Plasmids
Product Name: Rtn4 (NM_024226) Mouse Tagged ORF Clone
Tag: TurboGFP
Symbol: Rtn4
Synonyms: 1110020G17Rik; AA407876; AA409940; AA960376; ASY; C130026I10Rik; mKIAA0886; mKIAA4153; NgA
Mammalian Cell Selection: Neomycin
Vector: pCMV6-AC-GFP (PS100010)
E. coli Selection: Ampicillin (100 ug/mL)
ORF Nucleotide Sequence: >MG226109 representing NM_024226
Red=Cloning site Blue=ORF Green=Tags(s)

TTTTGTAATACGACTCACTATAGGGCGGCCGGAATTCGTCGACTGGATCCGGTACCGAGGAGATCTGCC
GCC**CGATCGCC**

ATGGACGATCAGAAGAAACGTTGGAAGGACAAGGTTGTTGACCTCCTGTACTGGAGAGACATTAAGAAGA
CTGGAGTGGTGGTGGTCCAGCTTATTCTGCTGCTGTCTCTGACAGTGTTCAGCATTGTCAGTGTAAAC
GGCCTACATTGCCTTGGCCCTGCTCTGTGACTATCAGCTTTAGGATATATAAGGGTGTGATCCAAGCT
ATCCAGAAATCAGATGAAGGCCACCCATTCAGGGCATATTTGGAATCTGAAGTTGCCATATCAGAGGAAT
TGGTTCAGAAATATAGTAATTCTGCTCTTGGTCATGTGAACAGCACAATAAAGAATTGAGGCGTCTCTT
CTTAGTTGATGATTTAGTTGATTCCCTGAAGTTTGCAGTGTGATGTGGGTATTTACTTACGTTGGTGCC
TTGTTCAATGGTTTACTACTGATTTTAGCTCTGATCTCACTCTTTCAGTATTCTGTTATATATGAAC
GGCATCAGGCGCAGATAGATCATTATCTAGGACTTGCAAACAAGAGCGTTAAGGATGCCATGGCCAAAAT
CCAAGCAAAAATCCCTGGATTGAAGCGCAAAGCAGAA

ACGCGTACGCGGCCGCTCGAG - GFP Tag - GTTTAA

Protein Sequence: >MG226109 representing NM_024226
Red=Cloning site Green=Tags(s)

MDDQKKRWKDKVVDLLYWRDIKKTGVVFGASLFLLLSLTVFSIVSVTAYIALALLSVTISFRIYKQVIQA
IQKSDGHPFRAYLESEVAISEELVQKYSNSALGHVNSTIKELRRLFLVDDLVDLSLKFVLMWVFTYVGA
LFNGLTLLILALISLFSIPVIYERHQAQIDHYLGLANKSVKDAMAKIQAKIPGLKRKAE

TRTRPLE - GFP Tag - V

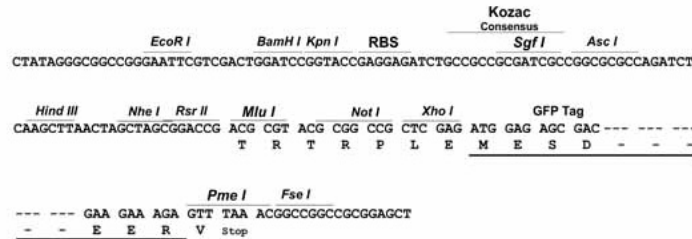


[View online >](#)

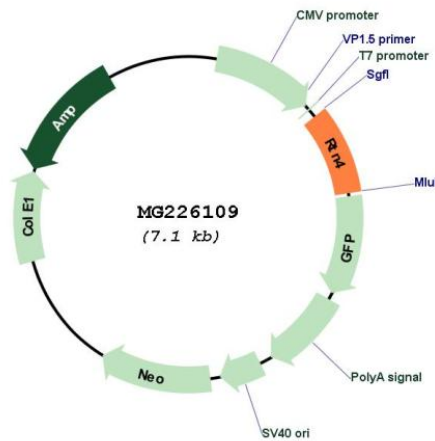
Restriction Sites: SgfI-MluI

Cloning Scheme:

Cloning sites used for ORF Shuttling:



Plasmid Map:



ACCN: NM_024226

ORF Size: 597 bp

OTI Disclaimer: The molecular sequence of this clone aligns with the gene accession number as a point of reference only. However, individual transcript sequences of the same gene can differ through naturally occurring variations (e.g. polymorphisms), each with its own valid existence. This clone is substantially in agreement with the reference, but a complete review of all prevailing variants is recommended prior to use. [More info](#)

OTI Annotation: This clone was engineered to express the complete ORF with an expression tag. Expression varies depending on the nature of the gene.

Components:	The ORF clone is ion-exchange column purified and shipped in a 2D barcoded Matrix tube containing 10ug of transfection-ready, dried plasmid DNA (reconstitute with 100 ul of water).
Reconstitution Method:	<ol style="list-style-type: none">1. Centrifuge at 5,000xg for 5min.2. Carefully open the tube and add 100ul of sterile water to dissolve the DNA.3. Close the tube and incubate for 10 minutes at room temperature.4. Briefly vortex the tube and then do a quick spin (less than 5000xg) to concentrate the liquid at the bottom.5. Store the suspended plasmid at -20°C. The DNA is stable for at least one year from date of shipping when stored at -20°C.
RefSeq:	<u>NM_024226.4</u> , <u>NP_077188.1</u>
RefSeq Size:	3271 bp
RefSeq ORF:	600 bp
Locus ID:	68585
UniProt ID:	<u>Q99P72</u>
Cytogenetics:	11 A3.3
Gene Summary:	Required to induce the formation and stabilization of endoplasmic reticulum (ER) tubules. They regulate membrane morphogenesis in the ER by promoting tubular ER production. They influence nuclear envelope expansion, nuclear pore complex formation and proper localization of inner nuclear membrane proteins. However each isoform have specific functions mainly depending on their tissue expression specificities.[UniProtKB/Swiss-Prot Function]