

## Product datasheet for **MG226102**

### Msi2 (NM\_054043) Mouse Tagged ORF Clone

#### Product data:

Product Type:	Expression Plasmids
Product Name:	Msi2 (NM_054043) Mouse Tagged ORF Clone
Tag:	TurboGFP
Symbol:	Msi2
Synonyms:	1700105C15Rik; AI451722; AI563628; AW489193; Msi2h
Mammalian Cell Selection:	Neomycin
Vector:	pCMV6-AC-GFP (PS100010)
E. coli Selection:	Ampicillin (100 ug/mL)
ORF Nucleotide Sequence:	>MG226102 representing NM_054043 Red=Cloning site Blue=ORF Green=Tags(s)

TTTTGTAATACGACTCACTATAGGGCGGCCGGAATTCGTCGACTGGATCCGGTACCGAGGAGATCTGCC  
GCC**CGATCGCC**

ATGGAGGCCAAATGGGAGCCAGGCACCTCGGGCAGCGCCAACGACTCCCAGCAGCACCCCGGTAAAATGT  
TTATCGGTGGACTGAGCTGGCAGACCTACCAGATAGCCTTAGAGACTATTTAGCAAATTTGGAGAAAT  
TAGAGAATGTATGGTCATGAGAGATCCCACAACGAAACGCTCCAGAGGCTTCGGTTTCGTCACCTTCGCA  
GACCCAGCAAGTGTAGATAAAGTATTAGGTCAGCCCCACCATGAGTTAGATTCCAAGACGATTGACCCAA  
AAGTTGCATTTCTCGTCGAGCGCAACCTAAGATGGTCACAAGAACAAGAAAATCTTCGTAGGAGGATT  
GTCTGCAAACACAGTAGTGAAGATGTAAGCAGTATTTGAGCAGTTTGGCAAGGTAGAGGATGCGATG  
CTGATGTTTCGACAAAACCAACAGGCACAGAGGTTTGGCTTTGTCACCTTTGAGAATGAAGACGTTG  
TGGAGAAAGTCTGTGAGATTCATTTCCATGAAATCAATAATAAAATGGTAGAATGTAAGAAAGCTCAGCC  
GAAAGAAGTCAATGTTCCACCTGGGACAAGAGCCGGGCCGGGGCTGCCATACACCATGGATGCGTTC  
ATGCTTGGCATGGGGATGCTGGGCTACCCCACTTTGTGGCAACCTATGGCAGAGGCTACCCCGATTG  
CTCCTAGCTATGGCTACCAGTTCACAGGCTTCACGGCGGAGCTTATGGACCAGTGGCAGCGGCAGCTGT  
GGCAGCGGCTCGAGGATCAGTCTGAATAGCTACAGTGTCAACCGAATTTGGCGCGCCGCTTCCCGG  
GCAGGCTCCAACCCGGCGCGGCCGGAGGCTTCCCGGGGGCCAACAGCCAGGACCTGTCCCGGATCTCT  
ACGGCCCTGCCAGCCAGGACTCCGGAGTGGGGAATTACATAAGCGCGCCAGCCACAGCCGGGCTCCGG  
CTTCGGCCACGGCATAGCTGGACCTTTGATTGCAACGGCCTTTACAAATGGATACCAC

**ACGCGT**ACGCGGCCGCTCGAG - GFP Tag - GTTTAA



[View online »](#)

Protein Sequence: >MG226102 representing NM\_054043  
 Red=Cloning site Green=Tags(s)

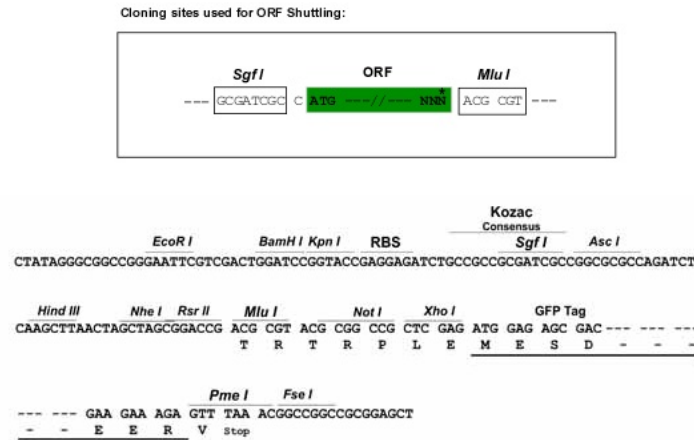
MEANGSPGTSGSANDSQHDPGKMF IGGLSWQTPDSL RDYFSKFGEI RECMVMRDPTTKRSRGGFVTFADPASVDKVLGQPHHELD SKTIDPKVAFPRRAQPKM VTRTKKIFVGGLSANTVVEDVKQYFEQFGKVEDAM LMFDKTTNRHRGFGFVTFENEDVVEKVC EIHFEINNKMVECKKAQPK EVMFPPTGRGRARGLPYTMDAF MLGMGMLGYPNFVATYGRGYPGFAPS YGYQFPGFPAAYGPVAAA AVAAARGSVLNSYSAQPNFGAPASP AGSNPARPGGFP GANSPGPVADLYGPASQDSGVGN YISAASPQPGSGFGHGIAGPLIATAFTNGYH

TRTRPLE - GFP Tag - V

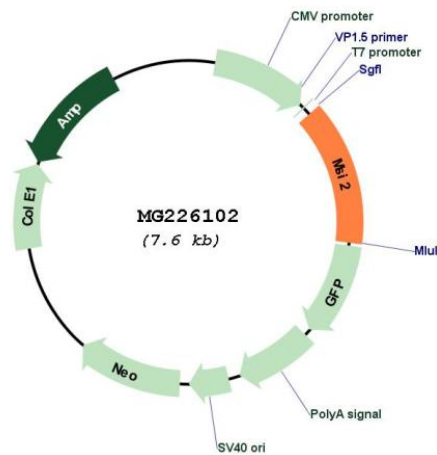
Restriction Sites:

Sgfl-MluI

Cloning Scheme:



Plasmid Map:



ACCN: NM\_054043

ORF Size: 1038 bp

<b>OTI Disclaimer:</b>	<p>Due to the inherent nature of this plasmid, standard methods to replicate additional amounts of DNA in E. coli are highly likely to result in mutations and/or rearrangements. Therefore, OriGene does not guarantee the capability to replicate this plasmid DNA. Additional amounts of DNA can be purchased from OriGene with batch-specific, full-sequence verification at a reduced cost. Please contact our customer care team at <a href="mailto:custsupport@origene.com">custsupport@origene.com</a> or by calling 301.340.3188 option 3 for pricing and delivery.</p> <p>The molecular sequence of this clone aligns with the gene accession number as a point of reference only. However, individual transcript sequences of the same gene can differ through naturally occurring variations (e.g. polymorphisms), each with its own valid existence. This clone is substantially in agreement with the reference, but a complete review of all prevailing variants is recommended prior to use. <a href="#">More info</a></p>
<b>OTI Annotation:</b>	This clone was engineered to express the complete ORF with an expression tag. Expression varies depending on the nature of the gene.
<b>Components:</b>	The ORF clone is ion-exchange column purified and shipped in a 2D barcoded Matrix tube containing 10ug of transfection-ready, dried plasmid DNA (reconstitute with 100 ul of water).
<b>Reconstitution Method:</b>	<ol style="list-style-type: none"> <li>1. Centrifuge at 5,000xg for 5min.</li> <li>2. Carefully open the tube and add 100ul of sterile water to dissolve the DNA.</li> <li>3. Close the tube and incubate for 10 minutes at room temperature.</li> <li>4. Briefly vortex the tube and then do a quick spin (less than 5000xg) to concentrate the liquid at the bottom.</li> <li>5. Store the suspended plasmid at -20°C. The DNA is stable for at least one year from date of shipping when stored at -20°C.</li> </ol>
<b>RefSeq:</b>	<a href="#">NM_054043.3</a> , <a href="#">NP_473384.1</a>
<b>RefSeq Size:</b>	6505 bp
<b>RefSeq ORF:</b>	1041 bp
<b>Locus ID:</b>	76626
<b>UniProt ID:</b>	<a href="#">Q920Q6</a>
<b>Cytogenetics:</b>	11 C
<b>Gene Summary:</b>	RNA binding protein that regulates the expression of target mRNAs at the translation level. May play a role in the proliferation and maintenance of stem cells in the central nervous system.[UniProtKB/Swiss-Prot Function]