

Product datasheet for **MG226083**

Nfatc1 (NM_001164110) Mouse Tagged ORF Clone

Product data:

Product Type:	Expression Plasmids
Product Name:	Nfatc1 (NM_001164110) Mouse Tagged ORF Clone
Tag:	TurboGFP
Symbol:	Nfatc1
Synonyms:	2210017P03Rik; AI449492; AV076380; NF-ATc; NFAT2; NFATc; Nfatcb
Mammalian Cell Selection:	Neomycin
Vector:	pCMV6-AC-GFP (PS100010)
E. coli Selection:	Ampicillin (100 ug/mL)



[View online »](#)

ORF Nucleotide Sequence:

>MG226083 representing NM_001164110
 Red=Cloning site Blue=ORF Green=Tags(s)

TTTTGTAATACGACTCACTATAGGGCGGCCGGGAATTCGTCGACTGGATCCGGTACCGAGGAGATCTGCC
 GCC**CGGATCGCC**

ATGCCAAGTACCAGCTTTCCAGTCCCTTCCAAGTTTCCACTCGGCCCTCCGGCCGAGTCTGCGGGAGCG
 GAGAACTTTGCGGCCCGCGCCCTCCGGCGCACCATGAAGGCGGCCGAGGAAGAACAACACTACAGTTA
 TGTGTCCCTAGTGTACCTCGACCCTGCCCTTCCCACAGCACACTCTGCCTTGCCAGCAGCATGCCAC
 GACCTCCAGACGTCCACCCCGGGTATCTCAGCTGTTCTTCCAGCAATCATCCCCCAGTTACGGAGGGG
 CTGTGGACAGCGGCCCTTCGGGATACTTCTGTCTCTGGCAACACCAGACCCAACGGGGCCCCGACTCT
 GGAGAGTCCGAGAATCGAGATCACCTCTACCTGGGCCTACACCATGGCAGCGGCCAGTTTTTCCACGAC
 GTGGAGGTGGAAGACGTACTTCTAGTGAAGCGCTCACCGTCTACAGCAACCTGCACCTGCCAGCC
 TGAAGCCTACAGAGACCCCTCTGCCTGAGCCAGCCAGCAGTCTCTCCTCAGAAGCTGTAACCTGA
 GGCTCTCTACGAGTCCAACACTCTACCCATACGCGTCCCCCAGACCTCTCGTGGCAGTACCC
 TGGGTGTCTCCAAGACCACGGACCCGGAGGAGGGTTTTCCCGAAGCCTGGGTGCCTGCCACCTGCTAG
 GATCGCCAGGCACTCCCATCCACCTCTCTCGGGCAAGCATCACGGAGGAGAGCTGGCTCGGTGCCCG
 CGGCTCCCGGCCACGTCCCCCTGCAACAAGCGCAAGTACAGTCTCAATGGCCGGCAGCCCTCTGCTCA
 CCCCACACTCACCCACACCATCCCCCATGGCTCCCCTCGGGTCAAGTGTGACCGAAGATACCTGGCTCG
 GTAACACCACCCAGTATACCAGCTCTGCCATTGTGGCAGCCATCAACGCCTGACCACCGATAGCACTCT
 GGACCTGGGTGATGGGGTCCCTATCAAGTCTCGAAAGACAGCACTGGAGCATGCGCCCTCTGTGGCCCTC
 AAAGTAGAGCCAGCTGGGAAGACCTGGGCACCACTCCACCCACTTCTGACTTCCACCCGAGGAGTACA
 CTTCCAGCACCTTCGGAAGGGTGCCTTTTGGCAGCAGTATCTGTGGTCCACAGGCCTCGTATCAGTG
 GGCGAAGCCCAAGTCTCTTTCCCGACATCATATAGAGCCCATCCTTGCCTGCCCTTACTGGCAGCTC
 CCGTACATTCTGGTCCATACGAGCTTCGGATCGAGGTGCAGCCCAAGTCTCACCCAGGGCTCACTATG
 AGACGGAAGGCAGCCGGGGGCTGTGAAGGCTTCACTGGAGGACACCCATTGTGCAGTACACGGTTA
 CTTGGAGAATGAACCTCTCACGTACAGCTGTTTATTGGGACGGCTGACGACCGCTGCTGAGGCCCCAC
 GCCTTCTACCAGTCCACCGGATCACGGGAAGACTGTCTCCACCACAGCCAGAGATCATCTGTCCA
 ACACCAAAGTCTGGAGATCCCCTTGTCTCCAGAAAATAACATGCGAGCCATCATCGACTGTGCTGGGAT
 CCTGAAGCTCAGAACTCTGATATTGAGCTGAGGAAAGGGGAGACAGACATCGGGAGGAAGAACCAGG
 GTGAGGCTGGTCTCCGAGTTCACATCCCACAGCCCAATGGCCGGACGCTGTCTCTCCAGGTGGCCTCGA
 ACCCTATCGAGTGTCCAGCGGTGAGCCAGGAGCTGCCCTCGTGGAGAAGCAGAGCAGACAGACGCTA
 CCCAGTATCGGCGGGAAGAAGATGGTGTGTCTGGCCATAAATTTCTGCAAGACTCCAAGTCAATTTTC
 GTGGAGAAGGCTCCAGATGGCCACCACGTCTGGGAGATGGAAGCAAGACTGACCGGGACCTGTGCAAGC
 CAAATTCCTGGTGGTTGAGATACCACCTTTCCGCAACCAGAGGATAACCAGCCCCGTCCAAGTCAATTT
 CTATGTCTGCAACGGGAACGGAAGAGAAGCCAGTACCAGCGTTTACGTACCTTCTGCCAATGTTCCA
 ATTATAAAGACAGAACCACGGACGACTTTGAGCCAGCTCTGACCTGTGGACCAATGAGCCAGGGGATTA
 GTCCTCTGCCGAGGCCTTACTACAGCCAACAGCTCACCATGCCTCCCGACCCCGGCTCTGCTCGTGGC
 TGGCTTCCGCCCTGCTCCAGAGGAACAGCCTGATGCCACGCCTCCCAACGCAAGCCGAAGCTCCAC
 GACCTTTCTCTCTGCTACACCAAGGGCTCACCAACCCGGGCCACAGTGGTACCTTGGACTTCAGC
 CACCCGCTTCGGAGGCCCCACCATGCAGGAAGTCCGAGACCCATGGCCATCCAACCAACTCGCTGA
 GCAGCCCCATCCGCCAGGCTACAGCCGAGGTGAGTCCACATCTGAACAGTAGCTGTCCCTTGGTCCG
 CGACAAGTGTCTGTCCCAACAGCCCCTTCTCCACTTCCATCTGCTGCCCAAGAGCCAGCCTGCTTAC
 AGTCTCAGCCCTCCCTCTGACATGGGCCACCGGACCCACAACCGCAGAAGGTTCAAAGAAATGAATC
 TCCAGCCGATTGCCAGAGGTGTGTGAGGACAGTGGCCATAACTTGGCCCTATTCTGTAGTATCAAG
 CAAGAGCCTGAGGAATTGGACCAGTGTACTTGGATGATGTAATGAGATCATACGTAACGACCTCTCCA
 GCACGATCCCCACTCC

AG**CGGACCG**ACGCGTACGCGGCCGCTCGAG - GFP Tag - GTTTAA

Protein Sequence: >MG226083 representing NM_001164110
 Red=Cloning site Green=Tags(s)

```

MPSTSFVPVSKFPLGPPAAVCGSGETLRPAPSSGGTMKAAEEHYSYVSPSVTSTLPLPTAHSALPAACH
DLQSTSTPGISAVPSANHPPSYGGAVDSDGSPGYFLSSGNTRPNGAPTLSPRIEITSYLGLHHGSGQFFHD
VEVEDVLPSCKRSPSTATLHLPSLEAYRDPSCLSPASSLSSRSCNSEASSYESNYSYPYASPTSPWQSP
CVSPKTTDPEEGFPRSLGACHLLGSPRHSPSTSPRASITEESWLGARGSRPTSPCNKRKYSLNGRQPSCS
PHHSPTPSPHGSPRVSVTEDTWLGNTTQYTSSAIVAAINALTTDSTLDLGDGVPIKSRKTALEHAPSVAL
KVEPAGEDLGTTPPTSDFPPEEYTFQHLRKGAFCEQYLSVPQASYQWAKPKSLSPTSYSMPSLPALDWQL
PSHSGPYELRIEVQPKSHHRAHYETEGSRGAVKASAGGHPVQLHGYLENEPLTLQLFIGTADDRLLRPH
AFYQVHRITGKTVSTTSHEIILSNTKVLEIPLLPENMRAIIDCAGILKLRNSDIELRKGETDIGRKNTR
VRLVFRVHIPQPNGRTLSQLVASNPIECSQRSAQELPLVEKQSTDSYPVIGGKMMVLSGHNFQDSKVIF
VEKAPDGHVWEMEAKTDRDLCKPNSLVVEIPFRNQIRITSPVQVSFYVCNGKRKRSQYQRFTYLPANVP
IIKTEPTDDFEPALTCGPMSQGISPLRPYYSQLTMPDPGSCLVAGFAPCSQRNTLMPTPPNASPKLH
DLSSPAYTKGLTNPGHSGHLGLQPPASEAPTMQEVPVPRMAIQNSPEQPPSARLQPVSPHLNSSCPLGR
RQVLCPNSSPLPSAAQEPAQLQSSALPPDMGHRQPQPQKVRNESPVALPEVCEDSGHNLAPIPVVVK
QEPEELDQLYLDVNEIIRNDLSSSTIPHS
  
```

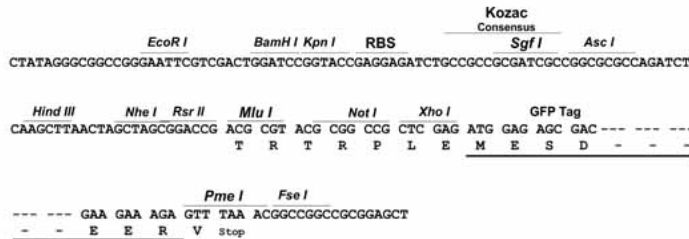
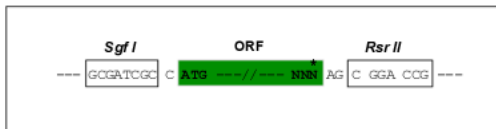
SGPTRRRLE - GFP Tag - V

Chromatograms: https://cdn.origene.com/chromatograms/ja1490_e04.zip

Restriction Sites: SgfI-RsrII

Cloning Scheme:

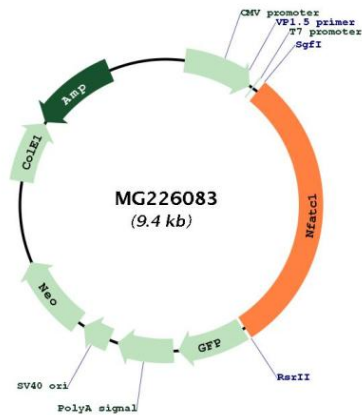
Cloning sites used for ORF Shuttling:



ACCN: NM_001164110

ORF Size: 2817 bp

OTI Disclaimer:	The molecular sequence of this clone aligns with the gene accession number as a point of reference only. However, individual transcript sequences of the same gene can differ through naturally occurring variations (e.g. polymorphisms), each with its own valid existence. This clone is substantially in agreement with the reference, but a complete review of all prevailing variants is recommended prior to use. More info
OTI Annotation:	This clone was engineered to express the complete ORF with an expression tag. Expression varies depending on the nature of the gene.
Components:	The ORF clone is ion-exchange column purified and shipped in a 2D barcoded Matrix tube containing 10ug of transfection-ready, dried plasmid DNA (reconstitute with 100 ul of water).
Reconstitution Method:	<ol style="list-style-type: none"> 1. Centrifuge at 5,000xg for 5min. 2. Carefully open the tube and add 100ul of sterile water to dissolve the DNA. 3. Close the tube and incubate for 10 minutes at room temperature. 4. Briefly vortex the tube and then do a quick spin (less than 5000xg) to concentrate the liquid at the bottom. 5. Store the suspended plasmid at -20°C. The DNA is stable for at least one year from date of shipping when stored at -20°C.
RefSeq:	<u>NM_001164110.1, NP_001157582.1</u>
RefSeq Size:	4896 bp
RefSeq ORF:	2820 bp
Locus ID:	18018
Cytogenetics:	18 53.66 cM

Product images:


Circular map for MG226083