

Product datasheet for **MG226082**

Nfatc1 (NM_001164109) Mouse Tagged ORF Clone

Product data:

Product Type:	Expression Plasmids
Product Name:	Nfatc1 (NM_001164109) Mouse Tagged ORF Clone
Tag:	TurboGFP
Symbol:	Nfatc1
Synonyms:	2210017P03Rik; AI449492; AV076380; NF-ATc; NFAT2; NFATc; Nfatcb
Mammalian Cell Selection:	Neomycin
Vector:	pCMV6-AC-GFP (PS100010)
E. coli Selection:	Ampicillin (100 ug/mL)



[View online »](#)

ORF Nucleotide Sequence:

>MG226082 representing NM_001164109
 Red=Cloning site Blue=ORF Green=Tags(s)

TTTTGTAATACGACTCACTATAGGGCGGCCGGGAATTCGTCGACTGGATCCGGTACCGAGGAGATCTGCC
 GCC**CGATCGCC**

ATGCCAAGTACCAGCTTCCAGTCCCTTCCAAGTTTCCACTCGGCCCTCCGGCCGAGTCTGCGGGAGCG
 GAGAACTTTGCGGCCCGCGCCCTCCGGCGCACCATGAAGGCGGCCGAGGAAGAACAACACTACAGTTA
 TGTGTCCCTAGTGTACCTCGACCCTGCCCTTCCCACAGCACACTCTGCCTTGCCAGCAGCATGCCAC
 GACCTCCAGACGTCCACCCCGGGTATCTCAGCTGTTCTTTCAGCCAATCATCCCCCAGTTACGGAGGGG
 CTGTGGACAGCGGCCCTTCGGGATACTTCTGTCTCTGGCAACACCAGACCCAACGGGGCCCCGACTCT
 GGAGAGTCCGAGAATCGAGATCACCTCTACCTGGGCCTACACCATGGCAGCGGCCAGTTTTTCCACGAC
 GTGGAGGTGGAAGACGTACTTCTAGTGAAGCGCTCACCGTCTACAGCAACCTGCACCTGCCAGCC
 TGAAGCCTACAGAGACCCCTCTGCTGAGCCAGCCAGCAGTCTCTCTCCAGAAGCTGTAACCTGA
 GGCCTCTCTACGAGTCCAACACTCTACCCATACGCGTCCCCCAGACCTCTCGTGGCAGTACCC
 TGGGTGTCTCCAAGACCACGGACCCGGAGGAGGTTTTCCCGAAGCCTGGGTGCCTGCCACCTGCTAG
 GATCGCCAGGCACTCCCATCCACCTCTCTCGGGCAAGCATCACGGAGGAGAGCTGGCTCGGTGCCCCG
 CGGCTCCCGGCCACGTCCCCCTGCAACAAGCGCAAGTACAGTCTCAATGGCCGGCAGCCCTCTGCTCA
 CCCCACCACTACCCACACCATCCCCCATGGCTCCCCTCGGGTCAAGTGTGACCGAAGATACCTGGCTCG
 GTAACACCACCCAGTATACCAGCTCTGCCATTGTGGCAGCCATCAACGCCTGACCACCGATAGCACTCT
 GGACCTGGGTGATGGGGTCCCTATCAAGTCTCGAAAGACAGCACTGGAGCATGCGCCCTCTGTGGCCCTC
 AAAGTAGAGCCAGCTGGGAAGACCTGGCACCCTCCACCACTTCTGACTTCCACCCGAGGAGTACA
 CTTCCAGCACCTTCGGAAGGGTGCCTTTTGGCAGCAGTATCTGTGGTCCACAGGCCCTGATCAGTG
 GGCGAAGCCCAAGTCTCTTTCCCGACATCATATAGAGCCCATCCTTGCCTGCCCTTGACTGGCAGCTC
 CCGTCACATTCTGGTCCATACGAGCTTCGGATCGAGGTGCAGCCCAAGTCTCACCACAGGGCTCACTATG
 AGACGGAAGGCAGCCGGGGGCTGTGAAGGCTTCAAGTGGAGGACACCCATTGTGCAGCTACACGGTTA
 CTTGGAGAATGAACCTCTCACGCTACAGCTGTTTATTGGGACGGCTGACGACCGCTGCTGAGGCCCCAC
 GCCTTCTACCAGGTCCACCGGATCACGGGAAGACTGTCTCCACCACCAGCCAGGATCATCTGTCCA
 ACACCAAAGTCTGGAGATCCCCTTGTCTCCAGAAAATAACATGCGAGCCATCATCGACTGTGCTGGGAT
 CCTGAAGCTCAGAACTCTGATATTGAGCTGAGGAAAGGGGAGACAGACATCGGGAGGAAGAACCAGG
 GTGAGGCTGGTCTCCGAGTTCACATCCCACAGCCCAATGGCCGGACGCTGTCTCTCCAGGTGGCCTCGA
 ACCCTATCGAGTGTCCAGCGGTACGCCAGGAGCTGCCCTCGTGGAGAAGCAGAGCAGACAGAGCTA
 CCCAGTATCGGCGGGAAGAAGATGGTGTGTCTGGCCATAAATTCTGCAAGACTCCAAGTCAATTTTC
 GTGGAGAAGGCTCCAGATGGCCACCACGTCTGGGAGATGGAAGCAAGACTGACCGGGACCTGTGCAAGC
 CAAATTCCTGGTGGTTGAGATACCACCTTCCGCAACCAGAGGATAACCAGCCCCGTCCAAGTCAGTTT
 CTATGTCTGCAACGGGAACGGAAGAGAAGCCAGTACCAGCGTTTCACGTACCTTCTGCCAATGGTAAC
 TCTGTCTTTCTAACCTTAAGCTCTGAGAGTGAGCTGAGAGGAGGTTTTTAC

AG**CGGACCG**ACGCGTACGCGGCCGCTCGAG - GFP Tag - GTTTAA

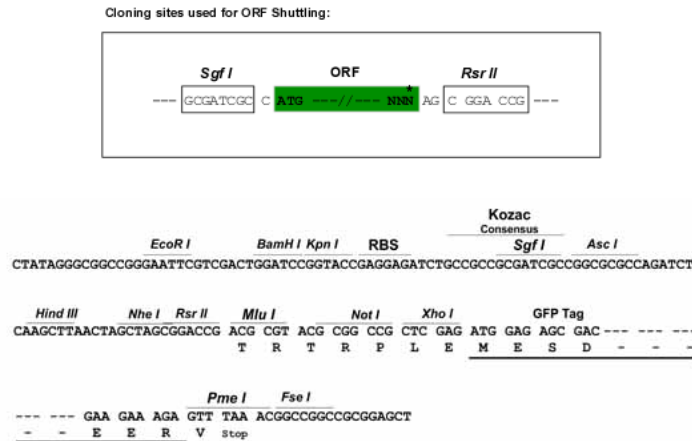
Protein Sequence: >MG226082 representing NM_001164109
Red=Cloning site Green=Tags(s)

```
MPSTSFVPVPSKFPLGPPAAVCGSGETLRPAPSSGGTMKAAEEEHYSYVSPSVTSTLPLPTAHSALPAACH
DLQTSTPGISAVPSANHPPSYGGAVDVGSPGYFLSSGNTRPNGAPTLESPRIEITSYLGLHHGSGQFFHD
VEVEDVLPSCKRSPSTATLHLPSLEAYRDPSCSPASSLSSRSCNSEASSYESNYSYPYASPTSPWQSP
CVSPKTTDPEEGFPRSLGACHLLGSPRHSPSTSPRASITEESWLGARGSRPTSPCNKRKYSLNGRQPSCS
PHHSPTPSPHGSPRVSVTEDTWLGNTTQYTSSAIVAAINALTTDSTLDLDGDGVPIKSRKTALEHAPSVAL
KVEPAGEDLGTTPPTSDFPPEEYTFQHLRKGAFCEQYLSVPQASYQWAKPKLSPTSYSMPSLPALDWQL
PSHSGPYELRIEVQPKSHHRAHYETEGSRGAVKASAGGHPVQLHGYLENEPLTLQLFIGTADDRLLRPH
AFYQVHRITGKTVSTTSHEIILSNTKVLEIPLLPENMRAIIDCAGILKLRNSDIELRKGETDIGRKNTR
VRLVFRVHIPQPNGRTLSQLVANSPIECSQRSAQELPLVEKQSTDSYPVIGGKMMVLSGHNLFQDSKVIF
VEKAPDGHVWEMEAKTRDLCKPNSLVVEIPFRNQRITSPVQVSFYVCNGKRRKRSQYQRFITYLPANGN
SVFLTLSESELRGGFY
```

SGPTRRRLE - GFP Tag - V

Restriction Sites: SgfI-RsrII

Cloning Scheme:



ACCN: NM_001164109

ORF Size: 2151 bp

OTI Disclaimer: The molecular sequence of this clone aligns with the gene accession number as a point of reference only. However, individual transcript sequences of the same gene can differ through naturally occurring variations (e.g. polymorphisms), each with its own valid existence. This clone is substantially in agreement with the reference, but a complete review of all prevailing variants is recommended prior to use. [More info](#)

OTI Annotation: This clone was engineered to express the complete ORF with an expression tag. Expression varies depending on the nature of the gene.

Components: The ORF clone is ion-exchange column purified and shipped in a 2D barcoded Matrix tube containing 10ug of transfection-ready, dried plasmid DNA (reconstitute with 100 ul of water).

Reconstitution Method:

1. Centrifuge at 5,000xg for 5min.
2. Carefully open the tube and add 100ul of sterile water to dissolve the DNA.
3. Close the tube and incubate for 10 minutes at room temperature.
4. Briefly vortex the tube and then do a quick spin (less than 5000xg) to concentrate the liquid at the bottom.
5. Store the suspended plasmid at -20°C. The DNA is stable for at least one year from date of shipping when stored at -20°C.

RefSeq: [NM_001164109.1](#), [NP_001157581.1](#)

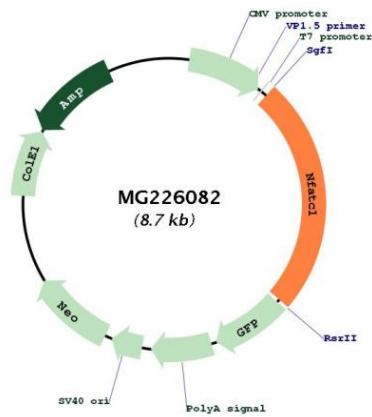
RefSeq Size: 4803 bp

RefSeq ORF: 2154 bp

Locus ID: 18018

Cytogenetics: 18 53.66 cM

Product images:



Circular map for MG226082