

Product datasheet for **MG226076**

Nfatc1 (NM_016791) Mouse Tagged ORF Clone

Product data:

Product Type:	Expression Plasmids
Product Name:	Nfatc1 (NM_016791) Mouse Tagged ORF Clone
Tag:	TurboGFP
Symbol:	Nfatc1
Synonyms:	2210017P03Rik; AI449492; AV076380; NF-ATc; NFAT2; NFATc; Nfatcb
Mammalian Cell Selection:	Neomycin
Vector:	pCMV6-AC-GFP (PS100010)
E. coli Selection:	Ampicillin (100 ug/mL)



[View online »](#)

ORF Nucleotide Sequence:

>MG226076 representing NM_016791
 Red=Cloning site Blue=ORF Green=Tags(s)

TTTTGTAATACGACTCACTATAGGGCGGCCGGGAATTCGTCGACTGGATCCGGTACCGAGGAGATCTGCC
 GCC**GCGATCGCC**

ATGACGGGGCTGGAGCAGGACCCGGAGTTCGACTTCGATTTCTCTTCGAGTTCGATCAGAGCGGCGGGG
 GCGCCGCGGCCGAGAACAACACTACAGTTATGTGTCCCCTAGTGTCACCTCGACCCTGCCCTTCCCACAGC
 ACACTCTGCCTTGCCAGCAGCATGCCACGACCTCCAGACGTCCACCCCGGGTATCTCAGCTGTTCTTCA
 GCCAATCATCCCCCAGTTACGGAGGGGCTGTGGACAGCGGGCCTTCGGGATACTTCTGTCTCTGGCA
 ACACCAGACCCAACGGGGCCCGACTCTGGAGAGTCCGAGAATCGAGATCACCTCTACCTGGGCTTACA
 CCATGGCAGCGGCCAGTTTTTCCACGACGTGGAGGTGGAAGACGTACTTCTAGCTGCAAGCGCTCACCG
 TCTACAGCAACCCTGCACCTGCCAGCCTGGAAGCCTACAGAGACCCCTCCTGCCTGAGCCAGCCAGCA
 GTCTCTCTCCAGAAGCTGTAACCTGAGGCCTCTCTACGAGTCCAACACTCTCTACCCATACCGCTC
 CCCCCAGACCTCTCCGTGGCAGTCAACCCTGCGTGTCTCCAAGACCACGGACCCGGAGGAGGTTTTCC
 CGAAGCCTGGGTGCCTGCCACCTGCTAGGATCGCCCAGGCACTCCCATCCACCTCTCTCGGGCAAGCA
 TCACGGAGGAGAGCTGGCTCGGTGCCCGCGGCTCCCGGCCACGTCCCTTGCAACAAGCGCAAGTACAG
 TCTCAATGGCCGGCAGCCCTCTGCTCACCCACCACTCACCCACACCATCCCCCATGGCTCCCCTCGG
 GTCAGTGTGACCGAAGATACCTGGCTCGGTAACACCACCCAGTATACCAGCTCTGCCATTGTGGCAGCCA
 TCAACGCCCTGACCACCGATAGCACTCTGGACCTGGGTGATGGGGTCCCTATCAAGTCTCGAAAGACAGC
 ACTGGAGCATGCGCCCTCTGTGGCCCTCAAAGTAGAGCCAGCTGGGAAGACCTGGGCACCACTCCACCC
 ACTTCTGACTTCCACCCGAGGAGTACACCTTCCAGCACCTTCGGAAGGGTGCCTTTTTCGAGCAGTATC
 TGTCCGTGCCACAGGCCCTCGATCAGTGGGCGAAGCCAAAGTCTTTTCCCGACATCATATAGGCC
 ATCCTTGCCCTGCCCTTGACTGGCAGCTCCCGTCACATTCTGGTCCATACGAGCTTCGGATCGAGGTGCAG
 CCCAAGTCTCACACAGGGCTCACTATGAGACGGAAGGCAGCCGGGGGGCTGTGAAGGCTTCAGCTGGAG
 GACACCCATTGTGCAGCTACACGGTTACTTGGAGAATGAACCTCTCACGCTACAGCTGTTCAATGGGAC
 GGCTGACGACCGCCTGCTGAGGCCCCACGCCTTCTACCAGGTCCACCGGATCACGGGGAAGACTGTCTCC
 ACCACCAGCCACGAGATCATCCTGTCCAACACCAAAGTCTGGAGATCCCGTTGCTTCCAGAAAATAACA
 TGCAGCCATCATCGACTGTGCTGGGATCCTGAAGCTCAGAACTCTGATATTGAGCTGAGGAAAGGGGA
 GACAGACATCGGGAGGAAGAACCAGGGTGGGCTGGTCTTCCGAGTTCACATCCACAGCCCAATGGC
 CGGACGCTGTCTCCAGGTGGCCTCGAACCTATCGAGTGTCCAGCGGTGAGCCAGGAGCTGCCCC
 TCGTGGAGAAGCAGAGCACAGACAGCTACCCAGTCATCGGCGGGAAGAAGATGGTGTCTGTGGCCATAA
 CTTTCTGCAAGACTCAAAGTCATTTTCGTGGAGAAGGCTCCAGATGGCCACCACGCTCTGGGAGATGGAA
 GCAAAGACTGACCGGGACCTGTGCAAGCCAAATCCCTGGTGGTTGAGATACCACCTTCCGCAACCAGA
 GGATAACCAGCCCGTCCAAGTCAGTTTCTATGTCTGCAACGGGAAACGGGAAGAGAAGCCAGTACCAGCG
 TTTACGTACCTTCTGCCAATGGTAACCTGTCTTTCTAACCTTAAGCTCTGAGAGTGAGCTGAGAGGA
 GGTTTTTAC

AG**CGGACCG**ACGCGTACGCGGCCGCTCGAG - GFP Tag - GTTTAA

Protein Sequence: >MG226076 representing NM_016791
 Red=Cloning site Green=Tags(s)

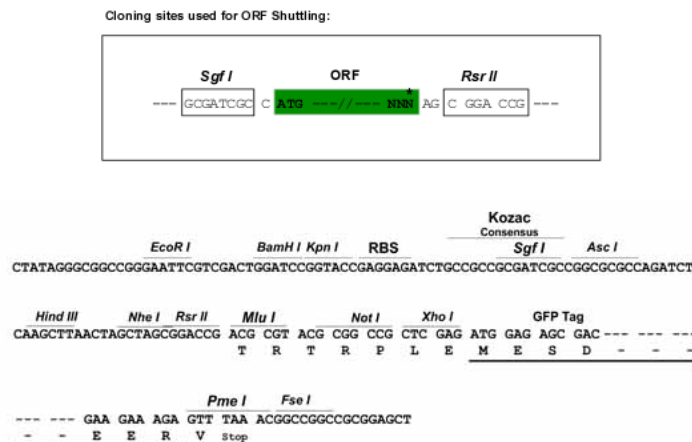
```

MTGLEQDPEFDFFDFLFEFDQSGGGAAAAEHYSYVSPSVTSTLPLPTAHSALPAACHDLQTSTPGISAVPS
ANHPPSYGGAVDSPGSGYFLSSGNTRPNGAPTLLESPRIETSYLGLHHGSGQFFHDVEVEDVLPSCKRSP
STATLHLPLEAYRDPSCSPASSLSSRSCNSEASSYESNYSYPYASPQTSPWQSPCVSPKTTDPEEGFP
RSLGACHLLGSPRHSPSTSPRASITEESWLARGSRPTSPCNKRKYSLNGRQPSCSPHHSPTSPHGSPR
VSVTEDTWLGNNTQYTSSAIVAAINALTTDSTLDLDGCVPIKSRKTALEHAPSVALKVEPAGEDLGTTPP
TSDFPPEEYTFQHLRKGAFCEQYLSVPQASYQWAKPKSLSPSYMSPSLPALDWQLPSHSGPYELRIEVQ
PKSHHRAHYETEGSRGAVKASAGGHPIVQLHGYLENEPLTLQLFIGTADDRLRPHAFYQVHRITGKTVS
TTSHEIILSNTKVLEIPLLPENNMRAIIDCAGILKLRNSDIELRKGETDIGRKNTRVRLVFRVHIPQPNG
RTLSLQVASNPIECSQRS AQELPLVEKQSTDSYPVIGGKMMVLSGHNFLQDSKIVFVEKAPDGHHVWEME
AKTDRDLCKPNSLVVEIPFRNQRITSPVQVSFYVCNGKRKRSQYQRFYTL PANGNSVFLTSSSELRG
GFY
  
```

SGPTRRRLE - GFP Tag - V

Restriction Sites: SgfI-RsrII

Cloning Scheme:



ACCN: NM_016791

ORF Size: 2109 bp

OTI Disclaimer: The molecular sequence of this clone aligns with the gene accession number as a point of reference only. However, individual transcript sequences of the same gene can differ through naturally occurring variations (e.g. polymorphisms), each with its own valid existence. This clone is substantially in agreement with the reference, but a complete review of all prevailing variants is recommended prior to use. [More info](#)

OTI Annotation: This clone was engineered to express the complete ORF with an expression tag. Expression varies depending on the nature of the gene.

Components: The ORF clone is ion-exchange column purified and shipped in a 2D barcoded Matrix tube containing 10ug of transfection-ready, dried plasmid DNA (reconstitute with 100 ul of water).

Reconstitution Method:

1. Centrifuge at 5,000xg for 5min.
2. Carefully open the tube and add 100ul of sterile water to dissolve the DNA.
3. Close the tube and incubate for 10 minutes at room temperature.
4. Briefly vortex the tube and then do a quick spin (less than 5000xg) to concentrate the liquid at the bottom.
5. Store the suspended plasmid at -20°C. The DNA is stable for at least one year from date of shipping when stored at -20°C.

RefSeq: NM_016791.4, NP_058071.2

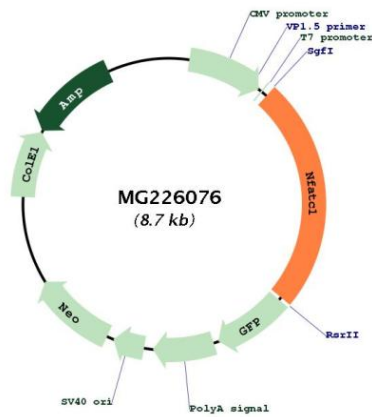
RefSeq Size: 4511 bp

RefSeq ORF: 2112 bp

Locus ID: 18018

Cytogenetics: 18 53.66 cM

Product images:



Circular map for MG226076