

Product datasheet for **MG226067**

Ddc (NM_001190448) Mouse Tagged ORF Clone

Product data:

Product Type:	Expression Plasmids
Product Name:	Ddc (NM_001190448) Mouse Tagged ORF Clone
Tag:	TurboGFP
Symbol:	Ddc
Synonyms:	Aadc
Mammalian Cell Selection:	Neomycin
Vector:	pCMV6-AC-GFP (PS100010)
E. coli Selection:	Ampicillin (100 ug/mL)



[View online »](#)

ORF Nucleotide Sequence:

>MG226067 representing NM_001190448
 Red=Cloning site Blue=ORF Green=Tags(s)

TTTTGTAATACGACTCACTATAGGGCGGCCGGGAATTCGTCGACTGGATCCGGTACCGAGGAGATCTGCC
 GCC**GCGATCGCC**

ATGGATCCCCTGAATCCGGAGGAGAGGCAAGGAGATGGTGGATTATATAGCTGACTATCTGGATGGCA
 TTGAGGTCGTCAGTGTACCCTGATGTGGAGCCTGGCTATCTTCGGCCCTGATCCCTGCCACTGCCCC
 CCAGGAGCCAGAAACATACGAGGACATAATCAAAGACATCGAGAAGATAATCATGCCAGGGGTGACACAC
 TGGCACAGTCCCTATTTCTCGCTTACTTCCCCACGGCTAGCTCATACCCAGCTATGCTTGACAGCATGC
 TGTGTGGTGTATTGGCTGCATTGGTTTCTCCTGGGCTGCAAGCCAGCGTGCACAGAGCTGGAGACCGT
 GATGATGGACTGGCTGGGAAGATGCTGGAGCTGCCAGAGGCCTTTTGGCTGGAAGAGCTGGGGAAGGG
 GGAGGAGTGATCCAGGAAGTCCAGTGAAGCCACCTTGGTGGCCCTACTGGCTGCTCGGACTAAAGTTA
 TCCGCCAGCTGCAGGCAGCCTCCCAGAGTTCACACAAGCTGCTATCATGAAAAGCTGGTTGCTTACAC
 ATCTGATCAGGCCATTCTCTGTAGAAGAGCTGGGTTAATTGGTGAATAAAGCTAAAAGCAGTCCCT
 TCGGATGGCAACTTTTCCATGAGAGCTTCTGCCCTTCGGGAAGCCCTGGAGCGGGACAAGGCAGCTGGCC
 TGATTCCATTCTTTGTGGTGCCTACACTGGGGACCACATCCTGCTGTTCTTTTGACAATCTCCTGGAAAT
 GGGTCCCCTGCAACCAGGAGGGTGTGTGGTGCACATTGACGCTGCTTACGCGGGCAGTGCCTTTATC
 TGTCTGAATCCGGTATCTTCTGAATGGTGTGGAGTTTGAGATTCTTTAACTTTAATCCCCACAAGT
 GGCTTTTGGTGAATTTGACTGCTTGCATGTGGGTGAAGAGGAGGACTGACTTAACCGGAGCCTTTAA
 TATGGACCCTGTTATCTAAAGCACAGTACCAGGACTCAGGATTCATCACTGACTACAGGCACTGGCAG
 ATCCCAGTGGGGCAGCAGTTCGCTCTTTGAAAATGTGGTTTGTTTTGAATGTACGGAGTCAAGGGGC
 TGCAGGCTTACATCCGAAAGCACGTGGAGCTGTCTCATGAGTTTGAGTCACTGGTACGCCAGGACCTCG
 CTTTGAATTTGCACAGAAGTATTCTTGGGTTGGTCTGCTTCCGGCTAAAGGGCTCCAATGAGTTGAAC
 GAAACTCTTTACAAAGAATAAACAGCGCCAAAAAATCCAATTGGTTCCATGTCGCTCTCCGAGACAAGT
 TTGTGCTACGCTTTGCTGTGTGCGCTCGCACTGTGGAGTCTGCCACGTGCAGCTGGCCTGGGAACACAT
 CAGTGATCTAGCAAGCAGTGTGCTGAGGGCAGAGAAAAGAA

ACGCGTACGCGGCCGCTCGAG - GFP Tag - GTTTAA

Protein Sequence:

>MG226067 representing NM_001190448
 Red=Cloning site Green=Tags(s)

MDSREFRRRGKEMVDYIADYLDGIEGRPVYPDVEPGYLRPLIPATAPQEPETYEDIKIDIEKIIMPGVTH
 WHSPYFFAYFPTASSYPAMLADMLCGAIGCIGFSAASPACTELETVMMDWLGKMLELPEAFLAGRAGEG
 GGVIQGSASEATLVALLAARTKVIKQLQAASPEFTQAAIMEKLVAYTSDQAHSSVERAGLIGGIKLVKAVP
 SDGNFSMRASALREALERDKAAGLIPFFVVATLGTSSCSFDNLLLEVGPICNQEGLVHIDAAYAGSAFI
 CPEFRYLLNGVEFADSFNPNPKWLLVNFDCSAMWVKRRDLTGAFNMDPVYLLKSHQDSGFITDYRHWQ
 IPLGRRFRSLKMWVFRMYGVKGLQAYIRKVELSHEFESLVRQDPRFEICTEVILGLVCFRLKGSNELN
 ETLLQRINSAKKIHLVPCRLRDKFVLRFAVCARTVESAHVQLAWEHISDLASSVLRRAEKE

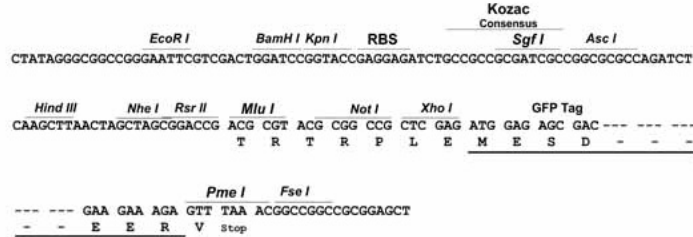
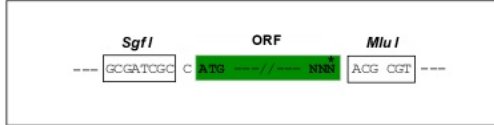
TRTRPLE - GFP Tag - V

Restriction Sites:

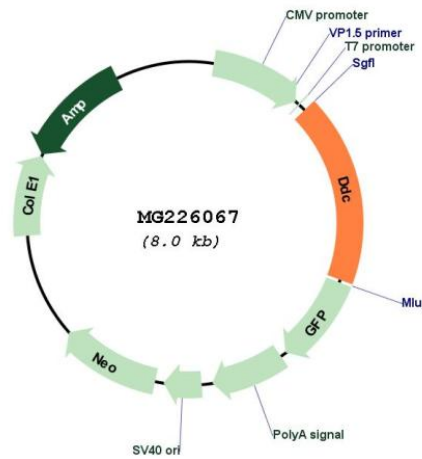
Sgfl-MluI

Cloning Scheme:

Cloning sites used for ORF Shutting:



Plasmid Map:



ACCN: NM_001190448
 ORF Size: 1440 bp

OTI Disclaimer:	<p>Due to the inherent nature of this plasmid, standard methods to replicate additional amounts of DNA in E. coli are highly likely to result in mutations and/or rearrangements. Therefore, OriGene does not guarantee the capability to replicate this plasmid DNA. Additional amounts of DNA can be purchased from OriGene with batch-specific, full-sequence verification at a reduced cost. Please contact our customer care team at custsupport@origene.com or by calling 301.340.3188 option 3 for pricing and delivery.</p> <p>The molecular sequence of this clone aligns with the gene accession number as a point of reference only. However, individual transcript sequences of the same gene can differ through naturally occurring variations (e.g. polymorphisms), each with its own valid existence. This clone is substantially in agreement with the reference, but a complete review of all prevailing variants is recommended prior to use. More info</p>
OTI Annotation:	This clone was engineered to express the complete ORF with an expression tag. Expression varies depending on the nature of the gene.
Components:	The ORF clone is ion-exchange column purified and shipped in a 2D barcoded Matrix tube containing 10ug of transfection-ready, dried plasmid DNA (reconstitute with 100 ul of water).
Reconstitution Method:	<ol style="list-style-type: none"> 1. Centrifuge at 5,000xg for 5min. 2. Carefully open the tube and add 100ul of sterile water to dissolve the DNA. 3. Close the tube and incubate for 10 minutes at room temperature. 4. Briefly vortex the tube and then do a quick spin (less than 5000xg) to concentrate the liquid at the bottom. 5. Store the suspended plasmid at -20°C. The DNA is stable for at least one year from date of shipping when stored at -20°C.
RefSeq:	NM_001190448.1 , NP_001177377.1
RefSeq Size:	2018 bp
RefSeq ORF:	1443 bp
Locus ID:	13195
UniProt ID:	O88533
Cytogenetics:	11 7.09 cM
Gene Summary:	Catalyzes the decarboxylation of L-3,4-dihydroxyphenylalanine (DOPA) to dopamine, L-5-hydroxytryptophan to serotonin and L-tryptophan to tryptamine.[UniProtKB/Swiss-Prot Function]