

Product datasheet for **MG226044**

Nr1i2 (NM_010936) Mouse Tagged ORF Clone

Product data:

Product Type:	Expression Plasmids
Product Name:	Nr1i2 (NM_010936) Mouse Tagged ORF Clone
Tag:	TurboGFP
Symbol:	Nr1i2
Synonyms:	mPXR; PXR; PXR.1; PXR.2; PXR1; SXR
Mammalian Cell Selection:	Neomycin
Vector:	pCMV6-AC-GFP (PS100010)
E. coli Selection:	Ampicillin (100 ug/mL)
ORF Nucleotide Sequence:	>MG226044 representing NM_010936 Red=Cloning site Blue=ORF Green=Tags(s)

TTTTGTAATACGACTCACTATAGGGCGGCCGGAATTCGTCGACTGGATCCGGTACCGAGGAGATCTGCC
GCC**CGATCGCC**

ATGAGACCTGAGGAGAGCTGGAGCCGAGTTGGCCTTGTACAGTGTGAAGAAGCAGACTCTGCCTTGAAG
AGCCCATCAACGTAGAGGAGGAAGATGGAGGTCTCAAATCTGCCGTGTATGTGGGGACAAGGCCAATGG
CTACCACCTCAATGTCATGACGTGTGAAGGATGCAAGGGGTTTTTCAGAAGGGCCATGAAACGCAATGTC
CGGCTGAGGTGCCCTTCCGCAAGGGAACCTGCGAGATCACCCGGAAGACACGACGGCAGTGCCAGGCCCT
GCCGTTTGGCAAGTGCCTGGAGAGTGGCATGAAGAAAGAGATGATCATGTCCGATGCCGCTGTGGAGCA
GAGGCGGGCCTTGATCAAGAGGAAGAAGAGGGAAAAGATTGAGGCTCCACCGCCTGGAGGGCAGGGGCTG
ACGGAAGAACAGCAGGCGCTGATCCAGGAGCTGATGGACGCTCAGATGCAAACCTTTGACACAACCTTCT
CCCCTTCAAGGATTTCCGGCTGCCTGCAGTGTCCACAGTGGCTGTGAGCTTCCAGAGTTTCTGCAGGC
CTCACTGTTGGAAGACCCTGCCACATGGAGTCAAATCATGAAAGACAGGGTTCCAATGAAGATCTCTCTG
CAGCTGCGCGGAGAAGACGGCAGCATCTGGAACACCAACCCCTTCCAAGAGCGACGGGAAAGAGATCA
TCCCTCTTCTGCCACACCTGGCCGATGTGTCAACCTACATGTTCAAGGGCGTCATCAACTCGCCAAAGT
CATATCTACTTTAGGGACCTGCCTATTGAGGACCAGATCTCCCTGCTGAAGGGGGCCACTTTTGGATG
TGATCCTGAGGTTCAACACGATGTTGACACGGAAACGGGAACCTGGGAGTGGCGCCGCTGGCTTACT
GCTTCGAAGACCCTAATGGTGGCTTCCAGAACTTCTGTTGGATCCATTGATGAAATCCACTGCATGCT
GAAGAAGCTACAGCTGCATAAGGAGGAGTATGTGCTGATGCAGGCCATCTCCCTCTTCTCCCCAGATCGT
CCTGGTGTGGTCCAGCGCAGCGTGGTAGACCAACTGCAGGAGAGGTTTGCCTCACCTGAAGGCCTACA
TTGAGTGTAGTCGGCCATATCCTGCTCACAGTTCTGTTCTGAAGATCATGGCCGTCCTCACTGAGCT
GCGAAGCATCAACGCCAGCAAACCCAGCAGTTGCTGCGCATCCAAGACTCGCACCCCTTTGCCACCCCA
CTCATGCAAGAGTTATTTAGCAGCACAGATGGC

ACGCGTACGCGGCCGCTCGAG - GFP Tag - GTTTAA



[View online »](#)

Protein Sequence: >MG226044 representing NM_010936
Red=Cloning site Green=Tags(s)

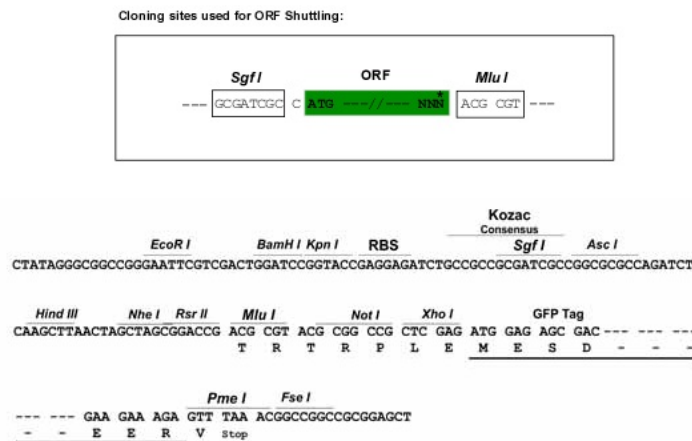
MRPEESWSRVGLVQCEEADSALEEPINVEEEDGGLQICRVCGDKANGYHFNVMTCEGCKGFFRRAMKRNV
 RLRCPPFRKGTCEITRKRTRRQCACRLRKCLESGMCKEMIMSDAAVEQRRALIKRKKREKIEAPPPGGQGL
 TEEQQALIQELMDAQMOTFDITFSHFKDFRLPAVFNHSGCELPFLQASLLEDPATWSQIMKDRVPMKISL
 QLRGEDGSIWNYQPPSKSDGKEIIPLLPHLADVSTYMFKGVINFAKVISYFRDLPIEDQISLLKGFATFEM
 CILRFNTMFDTEGTWECGRLAYCFEDPNGGFQKLLLDPLMKFHCMLKKLQLHKEEYVLMQAI SLFSPDR
 PGVVQRSVVDQLQERFALTLKAYIECSRYPYPAHRFLFLKIMAVLTELRSINAQQTQQLLRIQDSDHPFATP
 LMQELFSSTDG

TRTRPLE - GFP Tag - V

Chromatograms: https://cdn.origene.com/chromatograms/ja2199_f04.zip

Restriction Sites: SgfI-MluI

Cloning Scheme:



ACCN: NM_010936

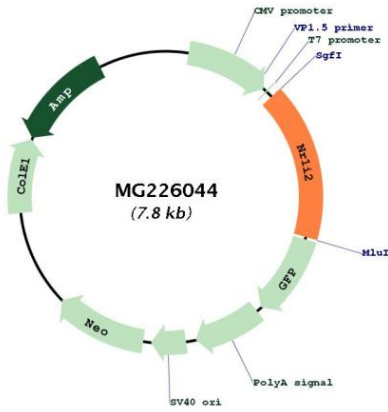
ORF Size: 1293 bp

OTI Disclaimer: Due to the inherent nature of this plasmid, standard methods to replicate additional amounts of DNA in E. coli are highly likely to result in mutations and/or rearrangements. Therefore, OriGene does not guarantee the capability to replicate this plasmid DNA. Additional amounts of DNA can be purchased from OriGene with batch-specific, full-sequence verification at a reduced cost. Please contact our customer care team at custsupport@origene.com or by calling 301.340.3188 option 3 for pricing and delivery.

The molecular sequence of this clone aligns with the gene accession number as a point of reference only. However, individual transcript sequences of the same gene can differ through naturally occurring variations (e.g. polymorphisms), each with its own valid existence. This clone is substantially in agreement with the reference, but a complete review of all prevailing variants is recommended prior to use. [More info](#)

OTI Annotation:	This clone was engineered to express the complete ORF with an expression tag. Expression varies depending on the nature of the gene.
Components:	The ORF clone is ion-exchange column purified and shipped in a 2D barcoded Matrix tube containing 10ug of transfection-ready, dried plasmid DNA (reconstitute with 100 ul of water).
Reconstitution Method:	<ol style="list-style-type: none">1. Centrifuge at 5,000xg for 5min.2. Carefully open the tube and add 100ul of sterile water to dissolve the DNA.3. Close the tube and incubate for 10 minutes at room temperature.4. Briefly vortex the tube and then do a quick spin (less than 5000xg) to concentrate the liquid at the bottom.5. Store the suspended plasmid at -20°C. The DNA is stable for at least one year from date of shipping when stored at -20°C.
RefSeq:	NM_010936.3 , NP_035066.1
RefSeq Size:	2540 bp
RefSeq ORF:	1296 bp
Locus ID:	18171
UniProt ID:	O54915
Cytogenetics:	16 B3
Gene Summary:	Nuclear receptor that binds and is activated by a variety of endogenous and xenobiotic compounds. Transcription factor that activates the transcription of multiple genes involved in the metabolism and secretion of potentially harmful xenobiotics, endogenous compounds and drugs. Response to specific ligands is species-specific, due to differences in the ligand-binding domain. Binds to a response element in the promoters of the CYP3A4 and ABCB1/MDR1 genes (By similarity). Activated by naturally occurring steroids such as pregnenolone and progesterone, the cholesterol metabolite 5-beta-cholestane-3-alpha,7-alpha,12-alpha-triol, synthetic glucocorticoids and antiglucocorticoids and 16-alpha-carbonitrile (PCN).[UniProtKB/Swiss-Prot Function]

Product images:



Circular map for MG226044