

Product datasheet for **MG226038**

Cacng7 (NM_133189) Mouse Tagged ORF Clone

Product data:

Product Type:	Expression Plasmids
Product Name:	Cacng7 (NM_133189) Mouse Tagged ORF Clone
Tag:	TurboGFP
Symbol:	Cacng7
Mammalian Cell Selection:	Neomycin
Vector:	pCMV6-AC-GFP (PS100010)
E. coli Selection:	Ampicillin (100 ug/mL)
ORF Nucleotide Sequence:	>MG226038 representing NM_133189 Red=Cloning site Blue=ORF Green=Tags(s)

TTTTGTAATACGACTCACTATAGGGCGGCCGGAATTCGTCGACTGGATCCGGTACCGAGGAGATCTGCC
GCC**CGATCGCC**

ATGAGTCACTGCAGCAGCCGCGCCCTGACCCTGCTGAGCAGCGTGTGGTGCCTGCGGCCTGCTCCTTG
TGGGCATCGCGGTCAGCACGGACTACTGGCTGTACATGGAGGAGGGGACCGTTTTGCCGCAGAACCAGAC
CACCGAGGTCAAGATGGCGCTGCACGCTGGCCTCTGGAGAGTCTGCTTCTTGCAGGTCGGGAGAAGGGG
CGCTGTGTGGCTTCTGAGTACTTCTTGAACCAGAGATCAACTTGGTGACGAAAAACACGGAGAATATTC
TGAAGACAGTGGCAGCGCTACACCTTCCCTATGGTCAGTCTCTTCTCGTGTTCCACCGCCTTTGTCAT
CAGCAACATCGGCCACATCCGACCTCAGAGGACCATTCTTGCGTTCGTTTCTGGCATCTTTTTTCATTTTA
TCAGGTCTCTCCTTGGTGGTGGCCTTGGTCTATACATCTCCAGCATCAACGACGAGGTCATGAACAGGC
CCAGCAGCTCTGAGCAGTACTTTCACTATCGCTACGGTGGTCTTTGCCTTCGCTGCTTCTTCTTCT
TCTCAAAGAGGGGGCCGGAGTCAATGTCCGTGACTTGTTCACCAAGCGCTACGCGGAGGAAGAGATGTAT
CGCCCGCACCCGGCCTTCTACCGACCGCTCTCAGCGACTGCTCCGACTACTCCGGCCAGTTTCTGCAGC
CCGAGGCGTGGCGTCGAGGCCGAGCCCTCCGACATCTCTAGCGAGTCTCCATTAGATGACGAAAA
TTACCCCGGCCATCAAGTACCGGACCATCTCCACATCTCCACTTCGCCGTGC

ACGCGTACGCGGCCGCTCGAG - GFP Tag - GTTTAA



[View online »](#)

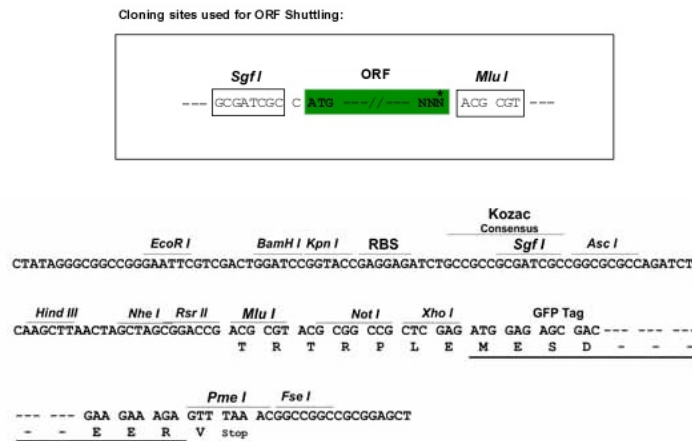
Protein Sequence: >MG226038 representing NM_133189
 Red=Cloning site Green=Tags(s)

MSHCSSRALTLLSSVFGACGLLLVGIAVSTDYWLYMEEGTVLPQNQTTEVKMALHAGLWRCVCFAGREKG
 RCVASEYFLEPEINLVTENTENILKTVRTATPFPMVSLFLVFTAFVISNIGHIRPQRTILAFVSGIFFIL
 SGLSLVGLVLYISSINDEVMNRPSSSEQYFHRYGWSFAFAASSFLLKEGAGVMSVYLF TKRYAEEMMY
 RPHPAFYRPRLSDCSDYSQFLQPEAWRRGRSPSDISSDYSIQMTQNYPPA IKYPDHLHISTSPC

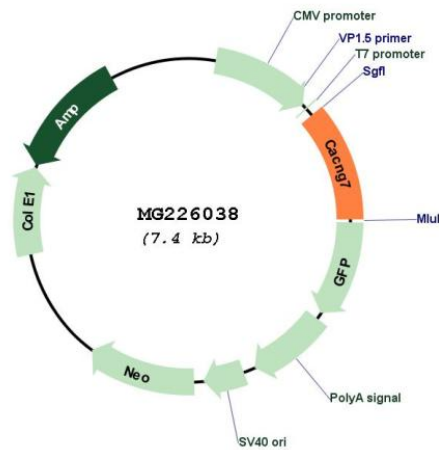
TRTRPLE - GFP Tag - V

Restriction Sites: SgfI-MluI

Cloning Scheme:



Plasmid Map:



ACCN: NM_133189

ORF Size: 825 bp

OTI Disclaimer:	The molecular sequence of this clone aligns with the gene accession number as a point of reference only. However, individual transcript sequences of the same gene can differ through naturally occurring variations (e.g. polymorphisms), each with its own valid existence. This clone is substantially in agreement with the reference, but a complete review of all prevailing variants is recommended prior to use. More info
OTI Annotation:	This clone was engineered to express the complete ORF with an expression tag. Expression varies depending on the nature of the gene.
Components:	The ORF clone is ion-exchange column purified and shipped in a 2D barcoded Matrix tube containing 10ug of transfection-ready, dried plasmid DNA (reconstitute with 100 ul of water).
Reconstitution Method:	<ol style="list-style-type: none">1. Centrifuge at 5,000xg for 5min.2. Carefully open the tube and add 100ul of sterile water to dissolve the DNA.3. Close the tube and incubate for 10 minutes at room temperature.4. Briefly vortex the tube and then do a quick spin (less than 5000xg) to concentrate the liquid at the bottom.5. Store the suspended plasmid at -20°C. The DNA is stable for at least one year from date of shipping when stored at -20°C.
RefSeq:	NM_133189.5
RefSeq Size:	828 bp
RefSeq ORF:	828 bp
Locus ID:	81904
UniProt ID:	P62956
Cytogenetics:	7 1.95 cM
Gene Summary:	Regulates the activity of L-type calcium channels that contain CACNA1C as pore-forming subunit (By similarity). Regulates the trafficking and gating properties of AMPA-selective glutamate receptors (AMPA receptors). Promotes their targeting to the cell membrane and synapses and modulates their gating properties by slowing their rates of activation, deactivation and desensitization and by mediating their resensitization (By similarity). Shows specificity only for GRIA1 and GRIA2 (By similarity).[UniProtKB/Swiss-Prot Function]