

Product datasheet for **MG226030**

Akap13 (NM_029332) Mouse Tagged ORF Clone

Product data:

Product Type:	Expression Plasmids
Product Name:	Akap13 (NM_029332) Mouse Tagged ORF Clone
Tag:	TurboGFP
Symbol:	Akap13
Synonyms:	1700026G02Rik; 5730522G15Rik; 5830460E08Rik; AKAP-13; AKAP-Lbc; BRX; Ht31; LBC
Mammalian Cell Selection:	Neomycin
Vector:	pCMV6-AC-GFP (PS100010)
E. coli Selection:	Ampicillin (100 ug/mL)
ORF Nucleotide Sequence:	>MG226030 representing NM_029332 Red=Cloning site Blue=ORF Green=Tags(s)

TTTTGTAATACGACTCACTATAGGGCGCCGGAATTCGTCGACTGGATCCGGTACCGAGGAGATCTGCC
GCC**CGATCGCC**

ATGAACTTAGTCCACAACAAGCTCCATTATATGGCGATTGTGTTGTACAGTATTGCTTGTGAAGAGG
ACAAAGTTGAAGATGATGCTATTTTTACTTGTATTTTTCTGGCTCTACCCTCTACTGCACAAGTAC
CCGGAAGTCAGTTCTGATACGTTGGAGACAATTGCTCCTGGTCACGACTGCTGTGAGACAGTGAAGGTG
CTGCTCTGTGCTCCAGAGAGGGCTTCTGTGTTGTAGTCGCTGAAGAAGACTTCCATTCGTCACAG
ATGAGGCGTATGATGCAGCTCAGTTCCTGGCAACCAGTGTGAAATCAGCAGGCTCTGAACTTCACAG
GTTCTCGATCGATCAGGACCTCTTCTAGAGATGTGAACTCTCTCGATGAGAAGGTGGCACTGGCATT
AGACACCTGAAGCTGCCTGCAGAATGGAACGTGTTAGGGACAGATCACACTTTGCATGACGGTGGCCCT
GGGAAACCCTGATGCACTTTGCTGTGCGGCTGGGACTGCTGCGGTTGACATGGTTCTGTACAGAAGCC
AGGTGGCCGTGGAGCTCTCAGCATCCACAACAAGGAAGGGCAACGCCTGTGAGCCTGGCACTGGAGCGA
GGTTATCAGCACTTACCAGCTTCTGACTGAGGAAAATGCAGGGGAGCCAGATTCTGGAGCAGCTTAT
CCTATGAAATCCCTTATGGCGACTGTTTCAGTGAGGCACCATCGAGAACTGGACATCTACACATTGACTTC
TGAATCCGAGTCACATCGTGAACCCATGGAGACAGCTGACTGGACATATTTCTAACTTATGAATATC
CAACAGCAGCTGATGAAAACAACCTTGAAGCAGATGGACAATCTCATGCCATTAATGGTGACAGCACAAG
ATTCGTCTTGTGCCCCAGTGTACCAGAGACAGATGGCCTATTCCTTCCCTGTGTACCAGAGCCTTCTGA
CCACCAGCATCCTCTTTTGAAGAACTAAGAGCACTCTGTGCTGCCAAAGGAGTCTGGGAGGATGGCT
GAAAGTTCCTGTGATTTGTCAAGCATGGTTGAGGAAGAAAATGTCATCTGTTCTCATAAGAAAAATAAG
ATGTGGGGAGAAAGGGGAAGAGCGGAGCCAGCATCTGCCATGGACTCCGGTCTGCATCTCATCAAGA
CAGCTGCCTTACAGAGCTACCCGACTGTGGAGTGAAGGGCAGAGAAGGTCTTCCATCCTGTGAAACAGA
AACGAAGTAACTGGAACAACTATTCTGGAGTAGCCACATGTGAGCAGCCACTGAGCAGCAGGAGCAGTG
TGCTGCAGGATGCCATGGTACAGAACAGATGCATGCCAGCACTTCTTGAAGGGAGCTACCAGACAG
CTTTCAACAGATGTTGGTGCCCGAAAAGGCAGGGAACTGGAACATAGCCTGCTTACCCAGATGCT



[View online >](#)

ACCACCCAGAACAATAAGCCTCAAGTAGGGGAAGGCACAAAGGAAAGACTTGAGAATTCAGACAGTAGCA
 CAACTGAAACAACCTGCTGTTCAAGTTTTAAGTGAACCCATGGAGAAAAGCCGATATTACAAACCATGTCTT
 TGCCACCAGTGCCGTAGGTGTTAACACTCCTGCTGAGGCTTACCTGCATTGAGTTCTGAAGAAATCCCC
 ACTGAAAAACCAGGAATGAAACTCAAGAGAGAGGCTGTGAGGGGGGAACCACAAGTGACCAGAGCTCCC
 CGGTGCTTCTGCTGCTGCTATAGAAAAAAGGTTTTAGTGGACAAGAACCTGATACTTCCATAGCAGG
 CTTTTGTAAGACAGCATCACCTTTGGATTTAACCATGCCAGGCCAAAGTTCAGATGGGATGCCAGAACAG
 AACTCAGAGTCTCATGCACGGCTGCTCAAAGCCTAAGTGGCCAGGCGCTGCTCTGTTCTACAGTGAGG
 CTGGCACGCCTTCTGCTGAGGCTACACATCAGCCGAGCAGCATGACTTCTAGTGGCAGGTTGGAAGAATG
 TGGCAGTGGTAAAGCTAGCCTGCCTGAAAGCACAAATGGTGCAGCCAAGCACGCAAGAACTTTGCACCACC
 CTCTGCCCAGAAGACCCACAAGCTGACACAGTCACTTCTGACACTGTGAAAAATACCCAGAAATCTGTGG
 GGGTTTGTCTCTGTGTTTCAGATGCAAGAATCAAGGAAATGGTTTGAAGCAAGATACACCTTTAAC
 GAACGTGCTTGAGGATGTTCCACGTCTGCCTTCAAGTGTCTCCAGACTGAGAAAGAACTAGCGCCAGAC
 CAGGTATCACCTCCAGCCAGCAGTTTCTCTGGCAAGCAGTCCAGAGAGTGAATCAGTAACCAAGATG
 ACGCACTTCTCTTGTCCCTCCAGAAAAGAAAAGGGAACAGCAACTCCTCAGCTCCATAGAACTACAGC
 TTGTGCGAGATGGCCAGATGGAAGAGATTTGAGTGATACCGATAAGGTAGGAGACGGGGCCACTGACCCA
 CCTCCATCCTCTGCTGTAGAGCTTCGGACCAGCATGGGAAATACCAAGCCCTGTAGGCATTGGTGGAGAAC
 AGGAGGGTTCCAGCCCAACAGCAACACTTGAAGTGTGAGTGACTCTTACTGCATAACGTGGATAAAGC
 TGCTTTGGTTTCTGACTTACTCTGCCTGAAGAAGGTGTCAAGTGTAGTGGTTCCAGAAAGTTCCACAGCT
 CTGGGGCAAGATGGCAAAGATAGAGCAATGAGCTGTTCTTCAAGTAAAGAAGACGTGCATTCTTCAGAAA
 TGTCAAGGGAAGACCAGAGAACCTCCCTCTGGGCAGGAGATACCAGGACTCTGTGAAAAACCTATGTC
 AGCCCTCTGTGCCGAGGAGAAAGCACAGCAGCACACCCCTCTGCCTGTCTGAAAAACAGAACTAAAGAC
 ATCAAGGAAGTGGCCCCACAGGTCTCCCTGCTGACTGAAGTGGGGCTGCAAAGAGCCTGGTGCCACCA
 GAACGAGTCTGTCTGCCATTCAAAGCAGAAAGCCTCGAGTACAGAGCAGAGCGGCTCATCTCTGTTGCC
 AAGTGGGCTGCCAGGTGGTCTGAGGCACTCCATTGTAATCAGCCTTCTGCTCTGATGTTGTCTGATGAG
 AATACTCAGTTCCAAGGGGAAACCAATGCTTGTGAGGTAAAGCAGAAAGTGCATGGAGGATGTTACAGTGG
 CTGATGCTTACCAGCTACTGCTGAGCCAGAAAAAGGATGCATCACACTGTATCAAAGACATCCCAAT
 TTCAGAGTTGTTAAACCAAGAGAAGCAATGACTCCAAGTTTGCCAGAAGCTTCTGACAAAAGGTGTC
 ACTGACTTACAGGAAGTCATAACCCAGAGATAGAACCCTTGAATGCAAGAGAGAGACGCTGGAGGGAA
 CAGACCTTAACTGTGCCACGAGTAACTCCAAGAGACCCCAATCGAAAAACCAATGCAGCCTCTTGCCAG
 GGACCTCCCCACAGAGACAGGGCTCTCAGTGATCAATAACAATGTCCCCAAGCTGCATGAAGCAAGTG
 GCACAGGCTTCCATCCCGCAGAGGAAAGTAAATGCCACTACTGTCTCAACCAAGCTGCAGATGTGCTTA
 CCAGAGCAGACTCCATAGAGGAGACCGCCACTAGGATAGTGGAGGCCGTATCAGGCAAGTCAGGGCCTC
 CAACGCACTGATGGCTAAAGTAGAAACCCAGAATCCGTCACTCTCCAGTCCAGAGACTAAGCAGCTAGAG
 AATGCTTACACAGAGAGTGCATGCGCTTCTGCTGCTGGGGAGACCCCGCAGATAGAGAAGACGCACGAAG
 ACACCACCGGGCAGTGTGGTGTGAGACAGAAGAACAGAGAAAAATTATTCTACCTGAGTCAAGCACCAGG
 TAAGCAAGGCAAAATGCCAGACACCAGAAGTGGAGTGAAGTGGACCTTCTGAGTAGGATCAGTGTGCT
 TCTGAGGAGGAGGCTGTAGGAAATGGAGCTGCCACACCAAGTGAAGCAAGGCCCGGGGACCCAGGCGA
 TCAACCGAGAAAGCTGGTGTGCCATAGAGCCCTGCCCTGAAGCAGCATCTCTTTAGCTTCAAACAGAG
 CTCAGAATGCAGAAGCTTCATAGATGTTGGACTGGGCACGGAGTGTGCTCAAAGAAGGCATGCTCCAG
 AGAGTGTCAAGGAGTGAAGTCTGACCTTTTCACTCACCCAGTGAAGTGGACAGCATCATCTTCCCAA
 AGCCTGAAGAAGAGCAGTTACTTTGTGATACAACAGGATCCAGTCTTCCACAGATGACACAGCTTCCCT
 GGATCGACATTCTTCTCATGGCAGTGAAGTGTCCCTTCTCAGACTTCAAAGTAAACAGATCCAGAAAT
 CATCAAAGTGCCAAATGGCTTTTTAGCCCTGGAGTGGAGGACCTGAGAGTGGAGAGAGTGAAGTGAAG
 CTGCTGGCTCTGGTGAATGGAAGAGGAGGAGATGGACAGCATCACTGAAGTGCCTGCCAACTGCTCTTT
 TCTGAGGAGCTCCATGCTTCTCTTTCTCTTTCCGGAGGCACAGCTGGGGACCTGGGAAGAACGCAGCC
 AGTGATGCAGAAATGAACCAGCGGAGTTCAATGCGAGCTCTTGGCATGTTGTGAGGAGCTCCCATTC
 ATAGGAGAAGTTTCAAGTCTGGAAGGCTTGACAGGAGGAGTGTGGAAATAGCCATCCTGCTCTAGA
 AATGAGCTCTGCAAACTCCAGCGAGCTCAGAAACCTTTTCGGTGGTGAAGAACAGAGAACTCTTTGATG
 TCACTTTCAGAAGAACATCTGGAGCCAGACCAGAGACAGCATCATAGGATGTTTGTGATCAGCAGACATGTT
 ACAGGTCTAAACAACAGGGATTTAACTACTGTACATCAGCCATTTCTTCTCCATTGACAAAAATCCATCTC
 ATTAATGACAATCAGTCATCCTGGATTGGACAGTTACGGCCCTTCCACAGTACCAGTGCCAACCTGACC
 GAGAGTAAACAGAAGAAAACCTGTAACCTCCTGCCTCAAAGTCCCTCAAAAAAGAATTTTGAAGAAAAGA

GTGGGACTAAGGTTAGTCGCACCTTCAGCTACATCAGGAATAAAATGTCCAGCAGCAAGAAGAGCAAAGA
 AAAGGAAAAGGAGAAGGATAAAATTAAGGAGAAAGAGAAAGACTCTAAAGAGAAGGAAAAAGATAAAAAG
 ACTCTTAACGGGCACACATTCAGCCCCATTCTATTGTGGGTCCCATCAGCTGCAGCCAGTGCATGAAGC
 CTTTTACCAACAAGGACGCCTACACGTGTGCAGGCTGTGGTGCTTTTGTCCACAAAGGCTGCAGAGAAAA
 TCTAGCCTCCTGTGCAAAGGTCAAAATGAAGCAGCCAAAAGGGAGCCTCCAGGCCACGATACATCATCG
 CTGCCCACAGTCATCATGAGAAACAAGTCTTACAGCCCAAGGAGCGCCCTAGGTCTGCAGTCCCTTTGG
 TGCTCCATACAAAACATCACTGGAGTTGGCAATGATGAGAACATGTCAAACACCTGAAAATTTCTATCT
 CATTCAACAGACTCATTGAATAAAATCTGCAAGGTCAATGAGTCAACAGAATCCCTTACTGATGAGGGAG
 TAGGTACAGACATGAATGAAGGACAGCTGATGGGAGATTTTAAAAGCGACTCTAAACAGCTAGAAGCAGA
 GTCATGGAGCCGGACAGTGGACAGCAAGTTCCTTAAACAGCAGAAAGAAAGATGTGGTCAAACGGCAGGAA
 GTGATTTACGAGTTGATGCAGACAGAGTTACATCACATCCGCACACTCAAGATCATGAGTGACGTGTACA
 GCCGGGCATGATGACAGATCTGCTCTTTGAGCAGCAGATGGTGGAAAAGCTGTTCCCTGCTTGGATGA
 GCTGATCAGTATCCACAGCCAGTCTTTTACAGAGGATCCTGGAGCCGAAGAAGGAGTCTCTTGTGGATAAG
 AGTGAAAAGAACTTTCTCATCAAGAGGATAGGGGATGTGCTTGTGAGTCAAGTCTCAGGTGAGAGTGCAG
 AGCGCTTAAAGAAGACATACGGCAAGTTCTGTGGACAGCAACACAGTCTGTCAACTACTCAAAGACCT
 CTACACCAAGGATAAGCGTTTCCAAGCCTTTGTGAAGAAGAAGATGAGCAGTTCAGTAGTAAGAAGGCTG
 GGAATTCAGAGTGCATTTTACTTGTAACTCAGAGGATCACCAAGTACCCAGTTTTATTCCAAGGATAC
 TGCAATGTACCAAGACAATGAAGTGGAGCAGGAAGACCTCACTCAGTCTTGAGCCTGGTGAAGGATGT
 GATTGGAGCCGTGGACAGCAAAGTGGCAAGTACGAGAAGAAAGTGCCTCTCGGTGAGATTTACACAAAAG
 ACAGATAGCAAGTCGATCATGAGAATGAAGAGTGGCAGATGTTCCGCAAGGAGGACCTAAGACGGGAAGA
 AGCTGGTGCAGCAGGGAGTGTGTTTCTGAAGAGCACAACAGGAAGGCTGAAAGAGGTTCAAGCAGTTCT
 ACTCAGTACATTTTAGTTTTCTTCAAGAAAAGACCAGAAATACGTGTTTGCATCTTGGACCATAAG
 TCAACAGTGATCTCCTTAAAGAAGCTGATTGTAAGAGAAGTGGCCATGAGGAGAAAGGCCTGTTCCCTCA
 TAGTATGGGGGTGAAAGATCCAGAGATGGTGGAGGTCCATGCAAGCTCCAGAGAGGAGCGGAATAGCTG
 GATTCAGATCATTAGGACACAATCAACTCCCTGAATAGAGATGAAGATGAAGGGATTCCAGTGAGAAT
 GAAGAAGAAAAGAAATGTTGGATACCAAGGCCGGGAGTTAAAAGAACAGCTTCAGCAGAAGGACCAGC
 AGATCCTCCTCTGCTGGAAGAGAAGGAGATGATTTTCCGGGACATGACTGAGTGCAGCACTCCCTTGCC
 AGAGGATTGCTCCCCAACGCACAGCCCGAGAGTGTCTTCCGCTCCAACACAGAGGAGGCTCTCAAAGGA
 GGACCGCTGATGAAAAGTCAATAAATGAAGTGGAAATCCTTCAGAGTTTGGTGAAGGAGGAGGAGGAGG
 GCACACTTGACAGTCCATCAGCAGCCCTGTTGAACAGGAAGTCAATGGCTGCGCCCATTTCTTTGCCCG
 GAGAGCAGAGACCTTTGGAGATTTGACTGTATCAGATGAATGCTTCAAAGGAGGTGAGAAAAGAGAG
 GGTGATGACGGCCAAGATCTCAGGAGAACAGAGTCAAGCAGCGGCTGAAAAGGGTGGAAATGGTAACC
 TGGTATTTATGCTTAAAAGAAACAGTGAGCAGGTTGTCCAGAGCATTGTTACCTCCACGAACCTCTCAG
 CATGCTGCAGGTTGCTGCTACAACAAGACAGCTACATTGAGGATCAGAAGCTGGTGTGACAGAGAAG
 GTCCTCACAAGGAGTGCATCTCGCCCCAGCTCTCTCATTGAGCAGGAGAAGCAGCGGAGCCTGGAGAAGC
 AGCGCCAGGACCTGGCCAACCTGCAGAAGCAGCAAGCAGCAGCTGGAGGAAAAGCGCCCGGGAGCG
 TGAGTGGAGGCCCCGGGAGCAGGAGCTCCGAGACCGAGAGGCCAAGCTGGCCGAGCGGGAAGAGACGGTC
 CGCCGACAGCAGCAGGACCTGGAGAGGGACCGCAAGAGCTCCAGCAGAAGAAGGGCACTTACCAGTGTG
 ACCTAGAGAGGCTACGGGCTGCCAGAAAACAGCTGGAACGAGAACAGGAACAGCTGAGGAGGACACAGA
 GCGGCTCAGCCAGAGGCAGATGGATCAGAACCTTTGCCAGGTTTCAAATAAATATGGCAGGCTGATGCGG
 ATCCCATCCTTCTGCCAATTCGGATGAGTTCTCCTCGCGTCTGCACCTTCTGTAAACCAATCAGGCT
 CATTGGACTCAGAACTCTCAGTGTCTCCTAAAAGGAACAGCATCTCTCGGACACAGAAAAGATAAGGGGCC
 TTTCCATATACTGGGCTCAGCCAGCCAGACAAAAGTTCAGAGGGGACAGCCAGGCCCGTCCAGCACC
 TCCACTCCACCCGACTCTTTGGGTTATCCAAGCCAAAGGAAAAGAGGAGAAAAAGAAGAGCAAAG
 GAAGCCGACCCAGCCTGGTGACGGCCCTGCTTCCGAAGTACCAGCAGAGGGTGAAGAGATCTTCTGT

ACGCGTACGCGGCCGCTCGAG - GFP Tag - GTTTAA

Protein Sequence:

>MG226030 representing NM_029332
 Red=Cloning site Green=Tags(s)

```

MKLSPQQAPLYGDCVVTVLLAEEDKVEDDAIFYLIFSGSTLYHCTSTRKVSSDTLETIAPGHDCCEVTKV
LLCASREGLPVFVVAEEDFHFVQDEAYDAAQFLATSAGNQALNFRFLDRSGPPSRDVNSLDEKVALAF
RHLKLPAEWNLGTDHTLHDGGPRETLMHFAVRLGLLRLTWFLLLQKPGGRGALSIHNKEGATPVSLALER
GYHELHQLLTEENAGEPDSWSSLSEYIPYGDSCSVRHHRELDIYTLTSESESHREPHGDSCTGHI SKLMNI
QQQLMKTNLKQMDNLMPLMVT AQDSSCVSPVETDGLFLPCVPEPSDHQHPPFEETKSTLCCQRSPGRMA
ESSCDLSSMVEEENVICSHKKNKDVGRKGEEAEPASAMDSGASHQDSCLQSVDPDCGVKGREGLPSCGNR
NEVTGTNYSGVATCQQPLSSRSVLQDAMVTEPDACQHSSGREL PDSSTDVGAPEKAGELEHSLTPDA
TTQNNKPQVGEGETKERLENSDSTTETTAVQVLEPMEKADITNHVFATSAVGVNTPAEASPALSSEEIP
TEKPGMETQERGC EGGTSDQSSPVLAAA IENKVLGGQEPDTSIAGFCKTASPLDLTMPGPSSDGMPEQ
NSESHARPAQSLSGQALLCSTAEAGTPSAEATHQPSTVTSGRLEECGSGKASLP ESTMVQPSTQELCTT
LCPEDPQADTVTSDTVKNTQKSVGVCHLCVSDAKNQGNLQDTPLTNVLEDVPRLPVSVVSQTEKELAPD
QVSPPASSFSLASSPESESVTKDDALSLVPSQKEKGTATPQLHRTTACRDGPDGRDLSDTDKVGDGATDP
PPSSAVELRTSMGNTSPVIGIGGEQEGSSPTATLEVLSDSLHNVDKAALVSDFTLPEEGVSVVVPESSTA
LGQDGDDRAMSCSSVKEDVHSSSEMSREDQRTPPSGQEIPGLCEKPM SALCAEEKAQQHTPSACLKTETKD
IKEVAPQVSLLEGGAAKSLVPPRTSL SADSKQKASSTEQSGSLLPSGLPGASEALHCNQPSALDVVVE
NTQFQGETNACEVSR SAMEDVTVADASPATAEPRKKDASHCIKDIPISELLNQE KQMTPSLPEAFLDKGV
TDLQEVITPEIEPLDCKRETLEGTDLNCATSNSKETPIEKPMQPLARDLPTETGLSVINNNVPQADMKQV
AQASIPAEESNATTVSTQAADVPTRADSI EETATRIVEAVIRQVRASNALMAK VETQNPSSLSPETKQLE
NAYTESACAFLPGETPQIEKTHEDTTGQCGAETEEPEKIILPESAPGKQKMPDTRTGDEV DLLSRI SAA
SEEEAVNGAATPKMKQGPQTQAINRESWCAIEPCPEASLLASKQSECRSFIDVGLGTECASKEGMLQ
RVSGSESDLFHSPSDEMDSIIFPKPEEEQLLCDTTGSSSSTDDTASLDRHSSHGSDVSLPQT SKLNRSRN
HQ SANGFFSPGVEAPESRESESE PAGSGEMEEEEEMDSIT EVPANC SFLRSSMRSLSPFRRH SWGPGKNA
SDAEMNQRSSMRALGHVVRPP IHRRSF SLEGLTGGGVGNKPSSSLEMSSANSSEL RNPFGGEEQRNSLM
SLSEEHLPEPDRQHHRMFDQQT CYRSKQQGFNYCTSAISSPLTKSISLMTISHPGLDSSRPFHSTSANLT
ESITEENCNFPSPSKKNFE EKSGTKVSRFFSYIRNKMSSSKKSKEKEKEKDKIKEKEKDSKEKEKDKK
TLNGHTFSPIPIVGPISCSQCMKPF TNKDAYTCAGCGAFVHKGREN LASC AKVKMKQPKGSLQAHD TSS
LPTVIMRNKSSQPKERPRSAVLLADEATAAPMFTNRRSQSVSLSKSVSIQNIITGVGN DENMSNTWKFLS
HSTDLSLNKICKVNESTESL TDEGVGTD MNEGQLMGDFESDSKQLEAESWSRTVDSKFLKQKQKDVVKRQE
VIYELMQTELHHIRTLKIMSDVYSRGMMDLLFEQQMVEKLPCLDELISIH SQQFQRIL ERKKE SLVDK
SEKNFLIKRIGDVLVSQFSGESAERLKKTYGKFCGQHNQSVNYFKDLYTKDKRFQAFVKKMSSSVVRRL
GIPECILLVTQRITKYPVLFQRILQCTKDNEVEQEDLTQSLSLVKDVIGAVDSKVASYEKKVRLGEIYTK
TDSKSIMRMKSGQMFAKEDLRRKLV RDGVSFLKSTTGRLKEVQAVLLTDILVFLQEKDQKYV FASLDHK
STVISLKKLIVREVAHEEKGLFLISMGVKDPPEMVEVHASSREERN SWIQI IQDTINSLNRDEDEGIPSEN
EEEEKLLDTKARELKEQLQKQDQI LLLL EEKEMIFRDMTECSTPLPEDCSPTHSPRVLFRSNT EEA LKG
GPLMKSAIN EVELQSLVSGSLGGTLGQSISSPVEQE VMAAPISLPRRAETF GGF DCHQMNASKGGEKEE
GDDGQDLRRTESDSGLKKGNGNLVFM LKRNSEQVVQSI VHLHELLSMLQGVVLQ QDSYIEDQKLV L TEK
VLTRSASRPSSLIEQEKQRSLEKQRDLANLQKQQAHL EEKRRREREW EAREQELRDREAKLAEREETV
RRRQDLE RDREELQKKGTYQCDLERLRAAQQLEREQEQLRRDTERLSQRQMDQNL CQVSNKHGRLMR
IPSFLPNSDEFSSPSAPSVTKSGSLDSEL SVSPKRNSISRTQKDKGPFHILGSASQTKVPEGQS QAPSS
STSTRFLGFLSKPKEKKEK KSKGSRTQPGDPASEVPAEGEEIFC
  
```

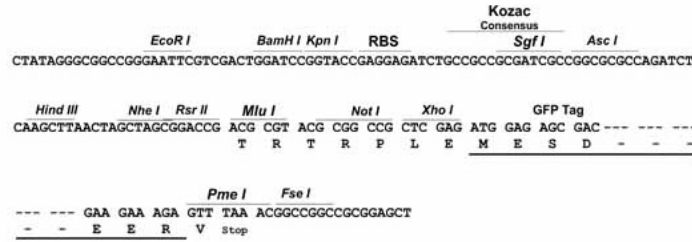
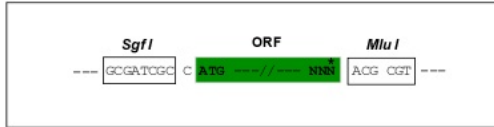
TRTRPLE - GFP Tag - V

Restriction Sites:

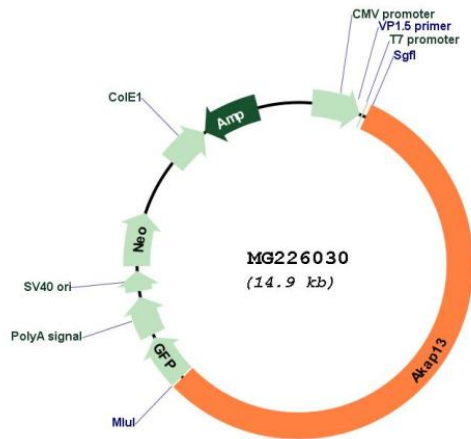
Sgfl-MluI

Cloning Scheme:

Cloning sites used for ORF Shutting:



Plasmid Map:



ACCN: NM_029332

ORF Size: 8328 bp

OTI Disclaimer:	The molecular sequence of this clone aligns with the gene accession number as a point of reference only. However, individual transcript sequences of the same gene can differ through naturally occurring variations (e.g. polymorphisms), each with its own valid existence. This clone is substantially in agreement with the reference, but a complete review of all prevailing variants is recommended prior to use. More info
OTI Annotation:	This clone was engineered to express the complete ORF with an expression tag. Expression varies depending on the nature of the gene.
Components:	The ORF clone is ion-exchange column purified and shipped in a 2D barcoded Matrix tube containing 10ug of transfection-ready, dried plasmid DNA (reconstitute with 100 ul of water).
Reconstitution Method:	<ol style="list-style-type: none">1. Centrifuge at 5,000xg for 5min.2. Carefully open the tube and add 100ul of sterile water to dissolve the DNA.3. Close the tube and incubate for 10 minutes at room temperature.4. Briefly vortex the tube and then do a quick spin (less than 5000xg) to concentrate the liquid at the bottom.5. Store the suspended plasmid at -20°C. The DNA is stable for at least one year from date of shipping when stored at -20°C.
RefSeq:	NM_029332.1 , NP_083608.1
RefSeq Size:	12543 bp
RefSeq ORF:	8331 bp
Locus ID:	75547
UniProt ID:	E9Q394
Cytogenetics:	7 D1

Gene Summary:

Scaffold protein that plays an important role in assembling signaling complexes downstream of several types of G protein-coupled receptors. Activates RHOA in response to signaling via G protein-coupled receptors via its function as Rho guanine nucleotide exchange factor. May also activate other Rho family members (PubMed:23658642). Part of a kinase signaling complex that links ADRA1A and ADRA1B adrenergic receptor signaling to the activation of downstream p38 MAP kinases, such as MAPK11 and MAPK14. Part of a signaling complex that links ADRA1B signaling to the activation of RHOA and IKBKB/IKKB, leading to increased NF-kappa-B transcriptional activity. Part of a RHOA-dependent signaling cascade that mediates responses to lysophosphatidic acid (LPA), a signaling molecule that activates G-protein coupled receptors and potentiates transcriptional activation of the glucocorticoid receptor NR3C1 (By similarity). Part of a signaling cascade that stimulates MEF2C-dependent gene expression in response to lysophosphatidic acid (LPA) (By similarity). Part of a signaling pathway that activates MAPK11 and/or MAPK14 and leads to increased transcription activation of the estrogen receptors ESR1 and ESR2. Part of a signaling cascade that links cAMP and EGFR signaling to BRAF signaling and to PKA-mediated phosphorylation of KSR1, leading to the activation of downstream MAP kinases, such as MAPK1 or MAPK3 (By similarity). Functions as scaffold protein that anchors cAMP-dependent protein kinase (PKA) and PRKD1. This promotes activation of PRKD1, leading to increased phosphorylation of HDAC5 and ultimately cardiomyocyte hypertrophy (PubMed:24161911). Has no guanine nucleotide exchange activity on CDC42, Ras or Rac (By similarity). Required for normal embryonic heart development, and in particular for normal sarcomere formation in the developing cardiomyocytes (PubMed:20139090). Plays a role in cardiomyocyte growth and cardiac hypertrophy in response to activation of the beta-adrenergic receptor by phenylephrine or isoproterenol (PubMed:23658642, PubMed:24161911). Required for normal adaptive cardiac hypertrophy in response to pressure overload (PubMed:17537920, PubMed:24161911). Plays a role in osteogenesis (PubMed:25892096).[UniProtKB/Swiss-Prot Function]