

Product datasheet for **MG226027**

Cd1d1 (NM_007639) Mouse Tagged ORF Clone

Product data:

Product Type: Expression Plasmids
Product Name: Cd1d1 (NM_007639) Mouse Tagged ORF Clone
Tag: TurboGFP
Symbol: Cd1d1
Synonyms: A1747460; CD1.1; Cd1a; Cd1d; Ly-38
Mammalian Cell Selection: Neomycin
Vector: pCMV6-AC-GFP (PS100010)
E. coli Selection: Ampicillin (100 ug/mL)
ORF Nucleotide Sequence: >MG226027 representing NM_007639
 Red=Cloning site Blue=ORF Green=Tags(s)

TTTTGTAATACGACTCACTATAGGGCGGCCGGAATTCGTCGACTGGATCCGGTACCGAGGAGATCTGCC
 GCC**CGATCGCC**

ATGCGGTACCTACCATGGCTGTTGCTGTGGCATTCTACAGGTCTGGGACAATCTGAAGCCCAGCAAA
 AGAATTACACCTCCGCTGCCTGCAGATGTCTTCTTTGCAAACAGAAGCTGGTCCCGCACAGACAGCGT
 GGTCTGGCTGGGGATCTGCAGACTCACCGTTGGAGTAATGACTCAGCCACCATCAGCTTACGAAGCCA
 TGGTCCCAGGGCAAGTTGAGTAACCAGCAGTGGGAGAAGTTGCAGCATATGTTTCAAGTCTATCGAGTCA
 GCTTTACCAGGGACATACAGGAATTAGTCAAAATGATGTCACCTAAAGAAGACTATCCCATTGAGATCCA
 GCTGTCTGCGGGCTGTGAAATGTACCCTGGGAATGCTTCGAAAGCTTTTTACACGTAGCATTTC AAGGA
 AAATATGTCGTGAGATTCTGGGGAACGTCTGGCAGACAGTCCCAGGGGCCCATCTTGTTAGACTTGC
 CCATCAAAGTGCTCAACGCTGATCAAGGGACAAGTGCAACCGTGCAGATGCTCCTGAATGACACCTGCC
 CCTATTTGTCCGTGGTCTCCTAGAGGCAGGGAAGTGCAGCCTAGAGAAGCAAGAGAAGCCAGTGGCCTGG
 TTGTCCAGTGTCCCAGCTCTGCACATGGCCATAGGCAGCTGGTGTGTCTCTGGCTTCTACCCAA
 AACCTGTGTGGGTGATGTGGATGCGGGTGACCAGGAGCAACAGGGTACTCACAGAGGTGATTTCTGCC
 AAATGCTGATGAGACATGGTATCTTCAAGCAACCCTGGATGTGGAGGCTGGAGAGGAAGCTGGCCTGGCC
 TGCAGGGTGAAGCACAGCAGCCTAGGAGGACAGGATATCATCCTCTACTGGGATGCCAGGCAAGCACCCG
 TGGCCTGATCGTCTTCAAGTACTGATCATGCTAGTGGTGGTGGTGTGTAGTCTACTATATCTGGAG
 AAGGAGAAGCGCTTATCAAGACATCCGG

ACGCGTACGCGGCCGCTCGAG - GFP Tag - GTTTAA



Protein Sequence: >MG226027 representing NM_007639
 Red=Cloning site Green=Tags(s)

MRYLPWLLLWAFLLQVWGQSEAQQKNYTRFRLQMSSFANRSWSRTDSVVWLGDLQTHRWSNDSATISFTKP
 WSQGLSNQQWEKLRHMFQVYRVSFTRDIQELVKMMSPKEDYPIEIQLSAGCEMYPGNASESFLHVAFAQ
 KYVYRFRWGTSWQTPVGPASWLDLPIKVLNADQGT SATVQMLLNDTCPLFVRGLLEAGKSDLEKQEKPVAV
 LSSVPSSAHGHRQLVCHVSGFYPKPVVWMMRMDQEQQGTGHRGDFLPNADETWYLQATLDVEAGEEAGLA
 CRVKHSSLGGQDIILYWDARQAPVGLIVFIVLIMLVVVGAVVYIWRRRSAYQDIR

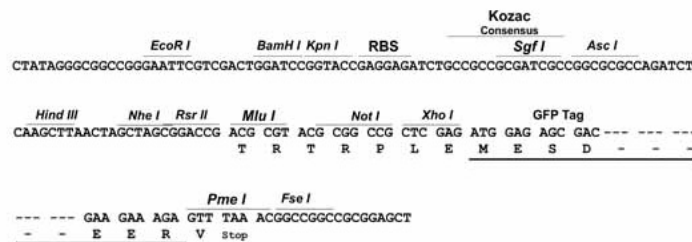
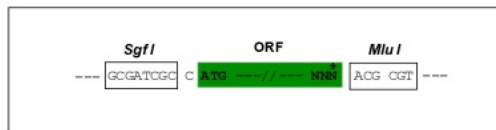
TRTRPLE - GFP Tag - V

Chromatograms: https://cdn.origene.com/chromatograms/ja1823_f06.zip

Restriction Sites: SgfI-MluI

Cloning Scheme:

Cloning sites used for ORF Shuttling:



ACCN: NM_007639

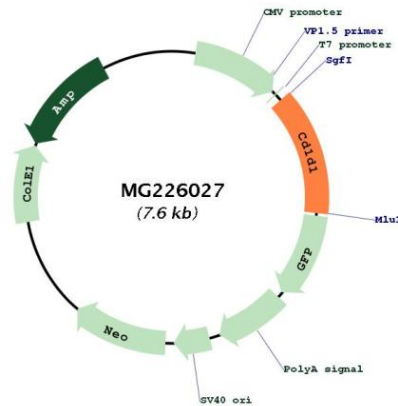
ORF Size: 1008 bp

OTI Disclaimer: Due to the inherent nature of this plasmid, standard methods to replicate additional amounts of DNA in E. coli are highly likely to result in mutations and/or rearrangements. Therefore, OriGene does not guarantee the capability to replicate this plasmid DNA. Additional amounts of DNA can be purchased from OriGene with batch-specific, full-sequence verification at a reduced cost. Please contact our customer care team at custsupport@origene.com or by calling 301.340.3188 option 3 for pricing and delivery.

The molecular sequence of this clone aligns with the gene accession number as a point of reference only. However, individual transcript sequences of the same gene can differ through naturally occurring variations (e.g. polymorphisms), each with its own valid existence. This clone is substantially in agreement with the reference, but a complete review of all prevailing variants is recommended prior to use. [More info](#)

OTI Annotation:	This clone was engineered to express the complete ORF with an expression tag. Expression varies depending on the nature of the gene.
Components:	The ORF clone is ion-exchange column purified and shipped in a 2D barcoded Matrix tube containing 10ug of transfection-ready, dried plasmid DNA (reconstitute with 100 ul of water).
Reconstitution Method:	<ol style="list-style-type: none">1. Centrifuge at 5,000xg for 5min.2. Carefully open the tube and add 100ul of sterile water to dissolve the DNA.3. Close the tube and incubate for 10 minutes at room temperature.4. Briefly vortex the tube and then do a quick spin (less than 5000xg) to concentrate the liquid at the bottom.5. Store the suspended plasmid at -20°C. The DNA is stable for at least one year from date of shipping when stored at -20°C.
RefSeq:	NM_007639.4
RefSeq Size:	1845 bp
RefSeq ORF:	1011 bp
Locus ID:	12479
UniProt ID:	P11609
Cytogenetics:	3 37.91 cM
Gene Summary:	Antigen-presenting protein that binds self and non-self glycolipids and presents them to T-cell receptors on natural killer T-cells.[UniProtKB/Swiss-Prot Function]

Product images:



Circular map for MG226027