

Product datasheet for **MG226021**

Srebf2 (NM_033218) Mouse Tagged ORF Clone

Product data:

Product Type:	Expression Plasmids
Product Name:	Srebf2 (NM_033218) Mouse Tagged ORF Clone
Tag:	TurboGFP
Symbol:	Srebf2
Synonyms:	AI608257; bHLHd2; lop13; nuc; SREBP-2; SREBP2; SREBP2gc
Mammalian Cell Selection:	Neomycin
Vector:	pCMV6-AC-GFP (PS100010)
E. coli Selection:	Ampicillin (100 ug/mL)
ORF Nucleotide Sequence:	>MG226021 representing NM_033218 Red=Cloning site Blue=ORF Green=Tags(s)

TTTTGTAATACGACTCACTATAGGGCGGCCGGAATTCGTCGACTGGATCCGGTACCGAGGAGATCTGCC
GCC**CGATCGCC**

ATGGATGAGAGCAGCGAGCTGGGCGTTCTGGAGACCATGGAGACCCTCACGGAGCTGGGCGATGAGCTGA
CTCTCGGGGACATCGACGAGATGCTACAGTTTGTGACCAATCAAGTGGGAGAGTTCCTGATTTGTTTTT
AGAGCAACTTTGTAGCTCCTTCCCTGGAGGTGGCAGCAATGGTGGCAGTGGCAACAACAGCAGTGGCAGA
GGCAACAATGGTGGAGCCACAGACCCTGCAGTACAGCGGTATTAGCCAGGTCCCATTATCTACCTTCT
CTCCCTCAGCTGCCTCCCCTCAGGCTCCGGCCCTGCAGGTCAAAGTCTCTCTACCCACCAAGGGCAAC
CCCTGTTCTCCAGCCGCGACCCAGCCCAAGCCCAACCTCCAGCTCAGCTGCAGCAGCAGCAGCGTGATG
ATCACCCCGACGTTACGACCCGCTCCGACAGCAGGATCATCCAGCAGCCTTTGATATACCAAGAACGCAG
CGACCAGCTTTCAAGTCTGCAGCCTCAAGTCAAAGCCTCGTGACGTCCCCGACGGTGCAGCCCGTAC
CATCCAGCAGCAGGTGCAGACGGTACAGGCCAGCGGGTGTGACGCAGACAGCCAATGGCACACTGCAG
ACCCTTGCCCCGCCACGGTACAGACGGTGCCTGCGCCACAGGTGCAGCAGGTCCCGGTCTGGTGAAC
CTCAGATCATTAAAGACAGATTCCCTTGTGTTGACCACGCTGAAGACAGATGGCAGCCCTGCATGGCTGC
AGTCCAGAACCCGGCCCTCACGGCCCTCACTGCCCCATCCAGACAGCCGCCCTTCAAGTGCCAACCCCTG
GTGGGCAGCAACGGGACCACTTCAACCAATGCCTGTGATGATGGGGCAAGAGAAAGTTCTATCAAG
AAGTGCCTGGCGCGTGAAGCAGCTGGATCCTCCAAAGAAGGAGAGAGCGGACAACACACAATATCAT
TGAAAAGCGCTACCGGTCTCCATCAACGACAAAATCATAGAGTTGAAGACTTAGTCATGGGGACAGAT
GCCAAGATGCACAAGTCTGGCGTTCTGAGGAAGGCCATTGATTACATCAAATATCTGCAGCAGGTCAATC
ACAAGCTGCGCCAGGAGAACATGGTGTGAAGCTGGCCAATCAGAAAAACAAGCTCCTGAAGGGCATCGA
CCTGGGCAGTCTGGTGGACAGTGTGGACTTGAATAATGATGACTTTAACCAGAATGCCTTCTGATG
TCTCCGCCGGCTCCGACTCCGGGTCCCAGGCCGGCTTCTCTCCCTATTCCATTGACTCTGAGCCGGGCA
GCCCTCTGCTGGATGACGCAAAGGTCAAGGATGAACCGGACTCTCTCTGTGGCACTGGGCATGGTGA
CCGCTCTCGAATCCTTATGTGTCCTCACCTTCTGGGCTCTCTTTAACCCCTTGACTTCTTCTGCTG



[View online »](#)

CAGTGGGGAGGGGCCACAACACTGACCAGCACCCATACTCAGGCTCGGGCCGAGTGTACTGTCACTGG
 AGTCAGGTGCTGGGGGCTGGTTTACTGGATGGTTCCAACCTCTCCTCTGTGGCTGGTAAATGGTGTGAT
 TGTCTTAGAGCTCTTTGTGAAGCTGTTGGTCCACGGGGAGCCGGTGATTCGCCCACACTCACGCCCTCA
 GTCACCTTCTGGAGACACCGGAAGCAGGCAGACCTAGACCTCGCCAAAGGTGATTTGCGAGCTGTGCTG
 CCAACCTACAACTGCTTATCCGTGCTGGGCCGGGCGTGCACCTCCCGCTGGACTTGGCCTGCAG
 CCTCTCCTGGAATGTGATCCGCTACAGCTGCAGAAGCTGCGCCTGGTACGCTGGTACTCAAGAAGTGG
 TTCCAGCGCTGGGGGCTACTCCCGCACTGCAGCTGGCTTTGAGGATGAGGCTAAGAGCAGCGCAAGGG
 ATGCGGCACTGGCTACCACAGGCTGCACCAGCTGCACATCACAGGAAGCTTCCGGCGGGATCTGCCTG
 TTCAGATGTGCACATGGCTCTGTGTGCTGTGAACCTGGCCGAGTGTGCGGAGGAGAAAATCTACCAAGC
 AACTGATTGAGATCCACCTGACAGCGCCATGGGGCTCAAGACCCGCTGTGGAGCAAGCTGGGCTTCT
 TGGCTAGCTACTTCTAAATCGTGCCAGAGTCTGTGTGGCCAGAGCATAGCACTGTCCCCGACTCCCT
 GCGCTGGCTATGCCATCCCTTGGCCAGAAGTTTTTCATGGAGCGAAGCTGGTGCATCAAGTACAGACCC
 AAGGAGAGCTGTACTGCGCCAGAGGAGCCAGCTGACCCATTGCCAGGTACACCAGGCGTTCTGCA
 AAAACCTGCTAGAAAGAGCGGTGGAGTCTTGGTAAACCTCAGGCCAAGAAGAAGCAGGCGACCAGGA
 AGAAGAGAGCTGTGAATTTCCAGTGTCTAGAGTATTTGAAATTAATTCATTCTTTTGGACTCTGTG
 GGATTTGTGACCTCACCATTCTCCAGCAGTTCCTGTGCTCAGGTCGGCCCTTGGCCCCGATGTCATCTGCC
 GGTGGTGGACGTCAGTACCATGGCCATCAGCTGGCTCCAGGGAGACGATGCAGCTGTGCGCTCTCG
 TTTTACTGAAGTAGAGCGGGTCCCAAGGCCCTGGAAGTGACCGAGAGTCCCTTGGTGAAGGCCGCTCTT
 TATACCTGTAGAGCCATGCATGCCTCCCTCTCTGGGAAAGCTGACGGGCAGCAGAACTCCTTCTGCACT
 GTGAGAGGGCCAGTGGTCACTGTGGAGCAGTCTCAACGTGACGGGCACTACTTCTGATCCTTCACTTAA
 CCATGTGATCCAGCTGTTCACTGTGACCTGCTACTGTGCTGAGGACAGCACTTGGCAAAAGCAGGCC
 AGTGCCAGCCAGCTCCTGGTGGAGACCTACCATGCATCCGGCAGTACTGAGCTGGCCGGCTCCAGCGGGACC
 TGGCAGCCTTCAAGGCTGGCCATAGCTTCCGCCAGCTACCGCAAGGTGTTCTGATCAAGGCCAC
 TGTGCGCCTGATGGCAGGAGCCAGCCCTACCCGTACACACCAGCTGCTGGAGCATAGCTACGCGCGCGC
 CCCACTCAGAACCAAGCATGGAGAGGTAGACACCTGGCCTGGCCAACGAGAGCGAGCTACTGCCATCC
 TGCTGGCCTGCCCATCTTCCCTCTTCTTCTGCTTCCCGGGCCAGCGGGCAGTGTGCTGCTGCTGA
 AGCTGCCCGCACCTGGAGAAGTGGGTGACCGCGCTTCTGCAGTACTGCCAGCAGATGATTGTCAAG
 CTGGGCGGTGGCACTGCCATCGCTGCCTCC

ACGCGTACGCGGCCGCTCGAG – GFP Tag – GTTTAA

Protein Sequence:

>MG226021 representing NM_033218
 Red=Cloning site Green=Tags(s)

MDESSELGVLETMETL TELGDEL TLGDIDEMLQFVSNQVGEFPDLFSEQLCSSFPGGGSSNGGSGNNSGR
 GNNGGATDPAVQRFSQVPLSTFSPSAASQPAPALQVKVSPTPPRATPVLQPRPQPQPQPPAQLQQQTVM
 ITPTFSTAPQTRIIQQPLIYQNAATSFQVLQPQVQSLVTSPOVQPVTIQQQVQTVQAQRVLTQTANGTLQ
 TLAPATVQTVAAPVQVQVPLVQPQIIKTDLSLVTTLKTDGSPVMAAVQNPAL TALTAPIQTAALQVPTL
 VGSNGTILTTMPVMMQEKVPIKQVPGGVKQLDPPKEGERRTTHNIIIEKRYRSSINDKIIELKDLVMGTD
 AKMHKSGVLRKAIDYIKYLQQVNHKLRQENMVLLKANQKNKLLKIDLGLSLVDSVDLKIIDFNQNVLLM
 SPPASDSGSQAGFSPYSIDSEPGSPLDDAKVKDEPDSPPVALGMVDRSRILLCVLTFGLS FNPLTSL
 QWGGAHNTDQHPYSGSRSVLSLESGAGGWFDMVPTLLLWL VNGVIVLSVFKLLVHGEVPIRPHSRPS
 VTFWRHRKQADLDLAKGDFAAAAANLQTCLSVLGRALPTSRLDLACSLSWNVIRYSLQKRLRVRWLLKKV
 FQRWRATPATAAGFEDEAKSSARDAALAYHRLHQLHITGKLPAGSACSDVHMALCAVNLAECAEEKILPS
 TLEIHLTAAMGLKTRCGGKLGFLASYFLNRAQSLCGPEHSTVPDSLRLCHPLGQKFFMERSWSIKSAA
 KESLYCAQRSPADPIAQVHQAFCKNLLERAVESLVKPKQAKKAGDQEEESCEFFSSALEYKLLHSFVDSV
 GFVTSPFSSSVLRSALGPDVICRWWTSAVTMAISWLQGDAAVRSRFTEVERVPKALEVTESPLVKAVF
 YTCRAMHASLSGKADGQNSFCHCERASGHLWSSLNVS GTTSDPSLNHV IQLFTCDLLL SLRTALWQKQA
 SASQLLGETYHASGTELAGFQRDLGSLRRLAHSFRPAYRKVFLHEATVRLMAGASPTRTHQLLEHSLRRR
 PTQNTKHGEVDTWPGQREERATAILLACRHLPLSFLSSPGQRAVLLAEARTLEKVGDRRSCSDCQMIVK
 LGGGTAAIAS

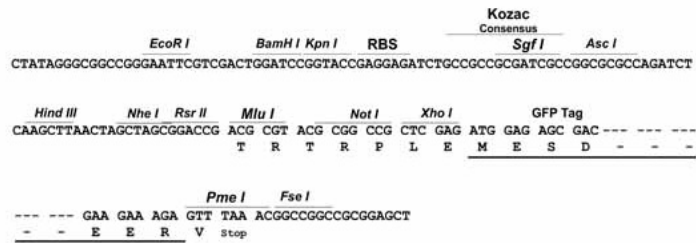
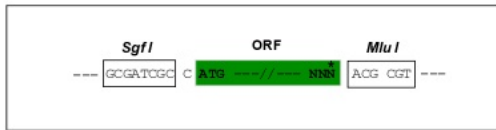
TRTRPLE – GFP Tag – V

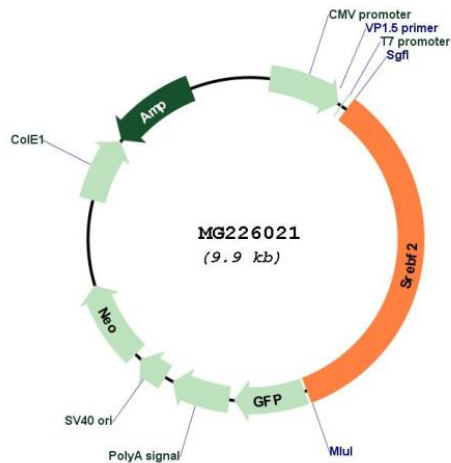
Restriction Sites:

SgfI-MluI

Cloning Scheme:

Cloning sites used for ORF Shutting:



Plasmid Map:


ACCN: NM_033218

ORF Size: 3390 bp

OTI Disclaimer: The molecular sequence of this clone aligns with the gene accession number as a point of reference only. However, individual transcript sequences of the same gene can differ through naturally occurring variations (e.g. polymorphisms), each with its own valid existence. This clone is substantially in agreement with the reference, but a complete review of all prevailing variants is recommended prior to use. [More info](#)

OTI Annotation: This clone was engineered to express the complete ORF with an expression tag. Expression varies depending on the nature of the gene.

Components: The ORF clone is ion-exchange column purified and shipped in a 2D barcoded Matrix tube containing 10ug of transfection-ready, dried plasmid DNA (reconstitute with 100 ul of water).

Reconstitution Method:

1. Centrifuge at 5,000xg for 5min.
2. Carefully open the tube and add 100ul of sterile water to dissolve the DNA.
3. Close the tube and incubate for 10 minutes at room temperature.
4. Briefly vortex the tube and then do a quick spin (less than 5000xg) to concentrate the liquid at the bottom.
5. Store the suspended plasmid at -20°C. The DNA is stable for at least one year from date of shipping when stored at -20°C.

RefSeq: [NM_033218.1](#), [NP_150087.1](#)

RefSeq Size: 4570 bp

RefSeq ORF: 3393 bp

Locus ID: 20788

UniProt ID: [Q3U1N2](#)

Cytogenetics: 15 E1

Gene Summary:

Transcriptional activator required for lipid homeostasis. Regulates transcription of the LDL receptor gene as well as the cholesterol and to a lesser degree the fatty acid synthesis pathway. Binds the sterol regulatory element 1 (SRE-1) (5'-ATCACCCCAC-3') found in the flanking region of the LDRL and HMG-CoA synthase genes.[UniProtKB/Swiss-Prot Function]