

Product datasheet for **MG225975**

Aadacl4 (NM_001081248) Mouse Tagged ORF Clone

Product data:

Product Type:	Expression Plasmids
Product Name:	Aadacl4 (NM_001081248) Mouse Tagged ORF Clone
Tag:	TurboGFP
Symbol:	Aadacl4
Synonyms:	Gm13177; OTTMUSG00000010747
Mammalian Cell Selection:	Neomycin
Vector:	pCMV6-AC-GFP (PS100010)
E. coli Selection:	Ampicillin (100 ug/mL)
ORF Nucleotide Sequence:	>MG225975 representing NM_001081248 Red=Cloning site Blue=ORF Green=Tags(s)

TTTTGTAATACGACTCACTATAGGGCGGCCGGAATTCGTCGACTGGATCCGGTACCGAGGAGATCTGCC
GCC**CGATCGCC**

ATGGCTATCCCGTGGCTGGTGTCTAGTGAGCCTGTCTACCTTTTATCTGGGAGTCTTCATATGGACTG
TCATTCAGCACTTTCTCACTGTGGAAATCCCTCTGCCTGAAGCATCCTGTCAAGTTCAGACTTCTGCA
TTGTTTAAATGCTGTACATAAATTACTCTGGGAAATATATTAGAGAAGATGAAAATTTGCTCCATGATCAGA
TTTATTCAGTTTTTCCAGGACTTAATAGTCATAAAGAAGAACCATAACTTGGTTGTAACCAACATGCATT
TTGGGACAATCCCTGTGAGACTATTCCAGCCTAAGGCAGTGTCTCAGAAGGCCGTGAGGCATTATTTT
CTACCACGGAGGGGAGCCATATGTGGCAGCCTGGACTGTTACCAATCTGTGCAGTTTCTGGCCAG
CAGACGGATTCACTGGTCTATCAGTGGGTACCGCAAGTTCCTGACCACCATACCCTTGTATTTCTA
AGGATTGCCTAAATGCCTCCATTCATCTTGAAGAATCTAATGACCTATGGGGTAGACCCTTCCCGGGT
GGTAGCCTGTGGAGAAAGTATTGGAGGTGGGACTGTGGCCTTAGTTACCCAGGCATTGGTCAGTCCCA
AGTCTCCCCACATCCGTGCTCAAGTGTCTAATCTCAAGTATGCAGGCGATCAATTTCCGCTTACCAT
CACATCAGCAAACAAAATGTCCCATTCCTCACCAGAGACATACTCACAATAGCTGTGTGTAATATCT
GGACATTGACTTATCTTGAAAGATGACTGTTAATGGTACTTATATGCATCCAGACACCTGGGAGAAG
TATAGAAAATGGCTCAGCTCTGATAACATTCCTAGAAGGTTCAAGAATAAAAGCCTCCTGCCGAGTTTT
CAAGACCTTTCAATGAGGCTGCCTTTCTGGAAATCAGACATAATTCTGGTTTAGAGGTTTACCTATCCT
AGTAGATGACAAGATCATTGCTCAGGTTCCAGAAGCATTCTAGTGACCTGTGAGAAATGACCCCTGCGT
GATGATGCCTTGCTCTACAAGAAGCGCTTAGAAGACCAAGGCGTCCCTGTAACCTGGTACCATGTGGAAG
ATGGCTTTCATGGATGCATCCTTTTGTGATAAACAGCCTTTCTCTTTCCCTGCTCCATAAAAAATTGC
AAATGCTGTTGCCAGTTACATAAAGGCATA

ACGCGTACGCGGCCGCTCGAG - GFP Tag - GTTTAA



[View online >](#)

Protein Sequence: >MG225975 representing NM_001081248
 Red=Cloning site Green=Tags(s)

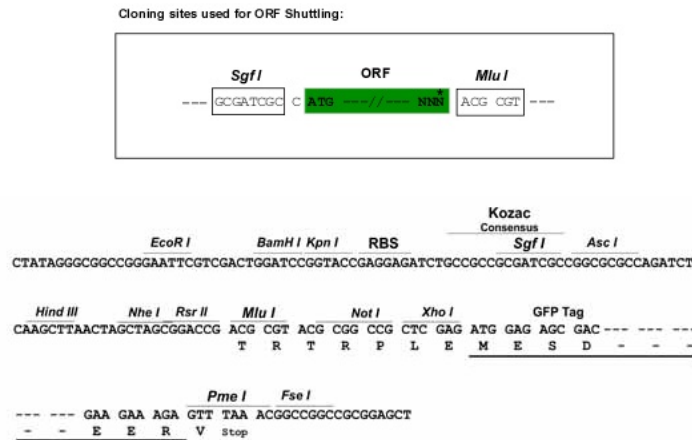
MAIPWLVLVSLSTFYLGVFIWTVIQHFLTVEIPSALKHPVKFRLLHCLMLYIITLGNILEKMKICSMIR
 FIQFFQDLIVIKKNHNLVVTNMHFGTIPVRLFQPKAVSSEGRGGIIFYHGGGAICGLSDCYHNLCSFLAQ
 QTDSVVL SVGYRKL PDHHPYCISKDCLNASIHFLKNLMTYGVDP SRVVACGESIGGGTVALVTQALVSFP
 SLPHIRAQV LITPSMQA INFR LPSHQQNVPFL TRDIL TIAVCKYLDIDL SWKDALFNGTYMHPDTWEK
 YRKW LSSDNIPRRFKNK SLLPEFSRPFNEA AFLEIRHNSGLEVSPILVDDKIIAQVPEAFLVTCENDPLR
 DDALLYK RLEDQGVPTWYHVEDGFHGCILLFDKQPF SFPCS I KIANAVASYIKGI

TRTRPLE - GFP Tag - V

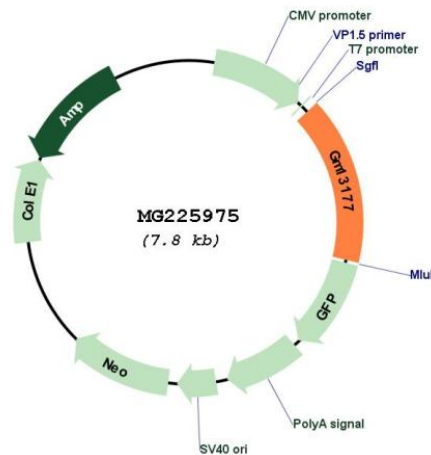
Restriction Sites:

Sgfl-MluI

Cloning Scheme:



Plasmid Map:



ACCN:

NM_001081248

ORF Size:	1221 bp
OTI Disclaimer:	The molecular sequence of this clone aligns with the gene accession number as a point of reference only. However, individual transcript sequences of the same gene can differ through naturally occurring variations (e.g. polymorphisms), each with its own valid existence. This clone is substantially in agreement with the reference, but a complete review of all prevailing variants is recommended prior to use. More info
OTI Annotation:	This clone was engineered to express the complete ORF with an expression tag. Expression varies depending on the nature of the gene.
Components:	The ORF clone is ion-exchange column purified and shipped in a 2D barcoded Matrix tube containing 10ug of transfection-ready, dried plasmid DNA (reconstitute with 100 ul of water).
Reconstitution Method:	<ol style="list-style-type: none">1. Centrifuge at 5,000xg for 5min.2. Carefully open the tube and add 100ul of sterile water to dissolve the DNA.3. Close the tube and incubate for 10 minutes at room temperature.4. Briefly vortex the tube and then do a quick spin (less than 5000xg) to concentrate the liquid at the bottom.5. Store the suspended plasmid at -20°C. The DNA is stable for at least one year from date of shipping when stored at -20°C.
RefSeq:	NM_001081248.1 , NP_001074717.1
RefSeq Size:	1224 bp
RefSeq ORF:	1224 bp
Locus ID:	435815
Cytogenetics:	4 E1