

Product datasheet for **MG225930**

Vcan (NM_019389) Mouse Tagged ORF Clone

Product data:

Product Type:	Expression Plasmids
Product Name:	Vcan (NM_019389) Mouse Tagged ORF Clone
Tag:	TurboGFP
Symbol:	Vcan
Synonyms:	5430420N07Rik; 9430051N09; Cspg2; DPEAAE; hdf; NG2; PG-M; PG-M(V0); PG-M(V1)
Mammalian Cell Selection:	Neomycin
Vector:	pCMV6-AC-GFP (PS100010)
E. coli Selection:	Ampicillin (100 ug/mL)
ORF Nucleotide Sequence:	>MG225930 representing NM_019389 Red=Cloning site Blue=ORF Green=Tags(s)

TTTTGTAATACGACTCACTATAGGGCGGCCGGAATTCGTCGACTGGATCCGGTACCGAGGAGATCTGCC
GCC**CGATCGCC**

ATGTTGATAAATATGAAAGGCATCTTATGGATGTGCTCAACCTTATTACTAACCCTGCACTACATCAAG
CCAAAATGGAAACCAGCCACCTGTTAAAGGCTCTCTGTCTGGAAAAGTGGTCTACCTTGTCATTTTTTC
AACCTTACCTACCTTACCACCCAATTACAACACGAGTGAATTTCTCAGAATCAAATGGTCTAAGATGGAA
GTGGACAAAAATGAAAAGATATAAAGGAGACGACTGTCTTGGTGGCCAGAACGAAATATCAAGATTG
GTCAGGACTACAAGGGGCGAGTGTCCGTGCTACACATCCCGATGATGTAGGTGATGCTTCCCTCACCAT
GGTCAAACCTCCGGCTAGTGATGCAGGCGTCTACCGATGTGATGTATGGGATTGAAGACACTCAG
GACACCATGTCACTGGCTGTGGATGGTGTGTGTTTCACTACAGGGCAGCCACCAGCAGGTACACTCTGA
ACTTTGCCGCTGCTCAACAGGCTTGTGGATATCGGGGCGGTCTAGCAAGCCAGAGCAGCTGTTTGC
CGCCTATGAGGATGGATTTGAGCAGTGTGATGCAGGATGGCTGTCTGATCAAACCTGTCAGATATCCATA
CGGGCTCCCCGAGAGGGCTGTTACGGAGACATGATGGGAAGGAAGGGTTCGGACCTATGGATCCGCT
CTCCCCAGGAAACCTATGATGTGATTGTTATGTGGATCATCTGGATGGCGATGTGTTCCACATCACTGC
TCCCAGTAAGTTCACCTTCGAGGAGGCCGAAGCAGAGTGTACAAGCAGGGATGCGAGGCTGGCGACTGTT
GGAGAACTTCAGGCAGCTTGGAGAAATGGCTTTGACCAATGCGATTACGGCTGGCTGTCGGATGCCAGCG
TGCGGCACCCCTGTGACTGTGGCCAGGGCCAGTGTGGAGGAGGTCTACTTGGGGTGAGAACCCTGTATCG
TTTTGAGAACCAGACATGCTTCCCTCTCCCTGATAGCAGATTTGATGCCTACTGCTTTAAACGTCGATTG
AGTGATATGATTGTAAGTGGTCAATAGATTCAGAATCTAAAGAAGAGGAACCTTGCAGTGAAGAAA
CAGATCCACTGCATGATCTGTTTGTGAAATTTACCCGAGTTACCAGACTCATTTGAAATAGACATATA
TCACAGTGAGGAAGATGAAGACGGAGAGGAGGACTGTGTAATGCAACGGATGTAACAACACTACTCCGTC
GTGCAGTATATCAATGGGAAGCAGCTCGTTACCACAGTGCCTAAGGACCCGGAAGCTGCAGAAGCTAGGC
GTGGCCAGTACGAAAGTGTGCACCTTCTCAGAATTTCCAGATAGTTCTGCAACTGACACCCATCAGTT
TATACTAGCAGAAACAGAATCGTCAACTACCATGCAATTAAGAAATCTAAAGAAGGCACCGAATTGTTA



[View online >](#)

GAAATCATGGAACCCGAGACCTACCCTGAAACACCAGACCATGTTTCAAGTGGTGAGCCTGATGTTT
TCCTACTCTCATCCCATGATGGTAAAACCACCAGATGGTCAGAGTCCATCACAGAGAGCAGTCCAAA
CCTTGAAATCCAGTGCACAAACAACCTAAGCCTGTCCCTCTGTTTCTGAAGAGTCTTCAGGAGAGGGT
GCCATTGAAACAAGCATCCAGGAAACAATCTTATCTAGGGCTACAGAAGTAGCACTTGGTAAAGAGACAG
ACCAAAGTCTACCTTATCTACCTCTAGCATACTTTCAAGTCTGTGTCAAGTAAATGTCTTGAGGAAGA
ACCCTTACTCTAACAGGAATCTCACAGACTGATGAATCCATGTCTACTATAGAAAAGCTGGGTAGAGATA
ACACTAGCCAAACTGTAAGTCTCGGAGAGTCTTCAGCTCCTATCATTGAAGGGTCTGGGGAAGTAG
AAGAAAAATAAAAAATAAAATCTTTAACATGGTAAGTATTTACCACAGAGAGATCCTACAGATACACTCAG
CCCTTTGGATATGAGCAAGATAATGATCACAAACCATCACATTTATATTCTGCAACCACCCTCTTTG
GATTCAAAACTACCTTCTCCAGATGCAAGGCTACACAGTTTGAATTCAAACAGCCACCTCTGAGTGGG
TTTCCGATAAGTCTTTGAAAGGAAGAAAAAGAGAAGATGAAGAGGGAGCTGTGAATGCAGCCACCA
AGGAGAAGTTCGAGCAGCAACAGAGAGGTGAGTCACTTACTTTAACACCAGAATTAGAAAAGTTCAAAT
GTAGATGCATCTAGTATTTGGTACCTGGGAAGGTTTTATTCTAGAGACAACCCACAGAGTCTGAAA
AGGAAATGGCAAATCAACTCCTGTTTTAGAGAAAACAATGGTGTAGCCAATGTGGAGGCACAGCCCTT
TGAGCATAGCAGTAGTAGTCATCCAGGGTTCAGGAAGAGCTGACCACTCTCTCAGGAAATCCCCCTCT
CTTTTTACGGACCTGGGCTCAGGAGATGCTAGTACTGGTATGGAACCTCATCACTGCTTCTTTATTTACAT
TAGATTTAGAGTCTGAAACCAAAGTCAAAAAGGAATTACCCAGTACTCCGCTCCTCCAGTGTGGAGATATC
ATCCTCTTTGAGCCAACAGGATTAACCCCGAGTACTGTACTAGACATAGAAAATTGCTGGAGTTATGAGC
CAGACATCGCAGAAGACACTGATTTCTGAAATATCAGGAAAGCCAACTTCCCAGTCAAGGATTAAGGGATT
TGATACAGGCTTTCCAATGGGAGAAGATTTAGTGGTGAAGTCAAGTGAATATCCAACAGTGTCTTATCC
AACGATGAAAGAGGAAACAGTTGGGATGGGAGGTTCTGACGATGAACGAGTTAGGGATACACAGACTTCA
TCATCTATACCGACTACCTCAGACAACATCTACCCCGTGCCTGACTCAAAAGGACCTGACAGTACTGTGG
CCAGCACACAGCCTTCCCCTGGGAAGAGGTGATGCTCAGCTGAGGGTCAAGTCAAGTCAAGTCAAGTCAAG
AGTCAAGGAGTCTGTTGGTCCAGTCTCCACTAGCTGTGGACATTTTTCTGGAACAGAGTCTCCATAT
TTTGATGAAGAGTTTGAAGAAGTGGCTGCAAGTGAAGCAAAATGAAAGACCCACTGTTTTGCCAACAG
CAGCAAGTGGAAACTGTAGATCTTACAGAAAATGGGTACATAGAGGTAATAGCACGATGCTACTGGA
CTTTCCCAGACAATGGAGCCATCCAAATGTGGTCTAAACCAGAAGTCAATCTTGATAAACAAGAGATT
GGAAGAGAAACAGTGACAAAGGAAAAAGCTCAGGGACAAAAGACTTTTGAATCGCTCCACAGTCTTTTTG
CACCAGAAACAACCATTTTGGAAACCAATCACTTATTGAACTGAATCCAACTTCCGATTACTCTAT
GTTAACAACTGAAAACGTACATTACTAATAAGGAAGTGGAGGAGGAAGGTATGTCATAGCGCATATG
TCTACTCCAGTCCAGGATCAAAGACTTGAATCATATACTACCCATCCCGAAGCTCCTGGAAAGTCAAC
ACTCTTTCTCAGTACTGCTTTAGTGAAGTCAAGTGGAGCAGCTAGAAGTACTCATGGATTCCCTCAAC
TCAAGAGGAAGAAAGCATAAAACTCTTCCAAAAGGGTGTGAAACTAACAATAAAGAGTCAAATGCTGAT
CTCTATTCTCTGGACTGGGATCAGGAGAGGCTTTGCCTCCTCTACCTACAACATCAGTGAATTTGACTG
ACATGAAGCAGATCATTAGCACATTGTATGCTGAGACATCTCACATGGAAGCTTAGGAACAAGCATCTT
AGGTGATAAAATGGAAGACCATGAAAGAATGGAAGATGTGTCCAATGAAGTTAGAATGCTCATTCCAAA
ACAGGCAGCATCTCTCAAGACAGCACAGAGGCACTCGACACAACCTTTGAGTCATACCGGAACAGAAGAAC
GTACAACCTCAACTCTTCTTTCTGTAAGTCAAGTGGACTTGAACGTTCTCCAAAGCAGACCCCTCAGGTG
GGAAGAGGAAACCCAGACCCATAGACCACAACTATGAGTGGACTGATCTAATGAAAATCTTTCAGCA
TCAGAAGCTGAAGAAGCAGCAACTTCCCCACTGCTTTTCTGCCTCAAACCTTACAGTGTGAAATGACCA
AACACTTTGCTCCATCAGAGTCAACAACATCCGACTTGTTAATGTAACCTCTGGAGAGGGATCTGGAGA
AGTGGATACTCTGACTTGTACTTCTGGAAGTCTCAGGCAAGCAGTCAAGGAGACAGCATGCTT
GCTTCTCATGGATTTCTGGAAAAACATCCAGAGGTGTCAAAGACTGAGGCTGGAGCTACTGATGATCTC
CAACAGCCTCAGCAATGTTCTGCATCACTCAGAGTACAAGATTCTCTGTATCCAACCAGCACACTGCC
AAGCACAGAGCCATATAAAAGTCCCTCAGAAGGTATTGAAGATGGTTTGAAGACAATATCCAATTTGAA
GGTTCTACCTTGAACCTAGCAGAAGAAAAACCACTGAAAGCATTATTATAGATCTAGACAAAGAGGATA
GTAAGGACCTAGGATTGACAATTACTGAGAGTGTATTGTTGAAATCTCCCTGAGCTGACATCAGATAA
AAATATTATTATAGACATTGATCACACTAACCTGTATATGAGTACATCCCTGGAATACAACAGACCTA
GATCCAGAGATAAAATGGAATCATGGCAGTAGTGAAGAAAGCCTTCAAGTTCAGAGAAAGTATGAGG
GAGCTGTTACCCTTTCTCCAACCTGAGGAATCATTTGAAGGCTCTGGTGTGCGCTTCTTGCTGGCTATAC
TCAAGCAATATACAATGAGTCTGTGACTCCAACGATGGAAGCAGGCAGAGGACATAAGCTTTAGTTTT
GCCACTGGGATCCCAGTTTCTAGCACAGAGACAGAATTACACACTTTCTTCCCACAGCCTCAACCTGC

ACATTCCTAGTAAACTAACCACAGCTAGTCCGGAGATTGATAAACCCAACATTGAAGCAATATCTCTGGA
TGATATATTTGAATCAAGCACCTTGTCTGATGGCCAAGCTATTGCAGACCAGAGTGAAGTAATATCAACA
TTAGGGCATTGGAAAAACACAGGAAGAATATGAAGAAAAGAAATATGGAGGTCCTTCATTTACGCCAG
AATTCTTTTCAGGAGTGGGGGAAGTATTGACAGATCCCCCTGCTTATGTAAGTATTGGTAGTACATACCT
TATAGCTCAGACTTTAACAGAATTACCCAATGTGGTAAGACCATCTGACTCCACACATTACACTGAAGCA
ACACCTGAAGTTTCCTCTCTGGCAGAGCTCTCCACAGATACCATCTTCTCCCTCCCTGTCTACGTAG
ACAATGGAGTCTCTAAATTCCCAGAGGTTCCCCATACAAGTGCTCAGCCAGTTTCTACTGTCACCTCATC
ACAAAAGTCTATAGAGAGTCCTTTTAAGGAAGTCCATGCTAATATTGAAGAAACCATCAAGCCATTGGGT
GGAAATGTCCACAGAACAGAGCCTCCATCCATGTCTCGTGACCCTGCTTTAGATGTTTCAGAAGATGAAA
GTAAGCATAAGTTACTAGAAGAACTGGAACGTCTCCACCAAACCTGAGACTTCCCAAGACTTCCCAAA
CAAAGCAAAGGATCACATTCCAGGAGAAACAGTTGGGATGCTTGGTGTATCAGAACAACAGAGAGCGAA
CCTGTCATTACTGCAGACGACATGGAGCTAGGAGGTGCCACACAGCAGCCACATTCTGCTTCTGCAGCTT
TCAGAGTTGAGACAGGTATGGTACCTCAGCCCATCCAACAGGAGCCTGAGAGGCCAACCTTTCCTCCTT
GGAAATTAACCATGAAACACACACATCATTATTTGGAGAATCTATACTGGCAACATCTGAAAAACAAGT
TCTCAAAAATTCTTGATAATAGTAACCCAGGCAACAGTCAGTAGTACTCTGGATCTACATACTGCACATG
CATTATACCATTTTCCATTCTGGACAATTCTAATGAAACTGCTTTCCTGATTGGCATTAGTGAAGAGTC
CGTGGAAGGCACAGCAGTTTACCTACCAGGACCTGATCTCTGCAAAAACAACCCATGCCTCAACGGAGGC
ACCTGTTATCCTACCGAGACTTCCATGTGTGCACCTGTGCACCTGGATACAGCGGAGACCAGTGTGAAC
TTGATTTTGATGAATGTCACCTAACCCTTGTCCGAATGGTGCCACCTGTGTGGATGGTTTTAATACATT
TAGATGTCTGTCTCCAAGTTATGTTGGTGCACCTCTGTGAACAAGACACTGAGACATGTGACTATGGC
TGGCACAATCCAAGGACAGTGCTACAAGTACTTTGCTCATCGACGCACATGGGATGCTGCTGAAAGGG
AGTGTGCGCTGCAGGGTGCACCTCACAAGCATCCTTCTCATGAGGAACAAATGTTTGTGAATCGTGT
GGCCATGATTACCAGTGGATCGCCTCAATGACAAGATGTTTGAACATGACTTCCGCTGGACTGACGGC
AGTGCACGCAATATGAGAACTGGAGACCCAACCAGCCAGACAGTTCCTTTCTGCAGGAGAAGACTGCG
TTGTGATCATTGGCATGAAAATGGTCAGTGAATGACGTCCCCTGCAATTACCACCTCACCTACACTTG
CAAGAAGGGAACAGTTGCTTGGCCCAACCCCCTGTTGTAGAAAATGCCAAGACCTTTGGAAAGATGAAA
CCACGCTATGAAATCACTCCTTGATTAGATATCACTGCAAAGATGGTTTCATTAGCGACACCTTCCAA
CTATCCGGTGCCTAGGAAACGGGAGATGGGCAATGCCTAAAATAACCTGCATGAACCCATCTGCATACCA
AAGGACTTATTCTAAGAAATACTTAAAAAATTCCTCATCCGCAAAGGACAATTCTATAAATACATCAAAA
CATGAGCATCGCTGGAGCCGGAGGCGGCAGGAAACCAGGCGC

ACGCGTACGCGGCCGCTCGAG - GFP Tag - GTTTAA

Protein Sequence: >MG225930 representing NM_019389
 Red=Cloning site Green=Tags(s)

```

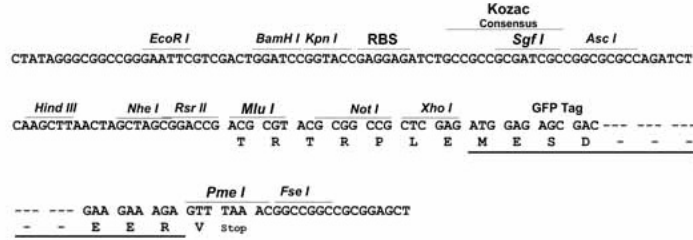
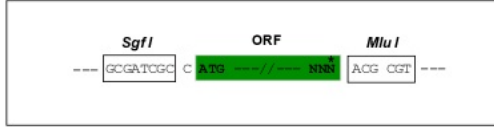
MLINMKGILWMCSTLLLTHALHQAKMETSPPVKGSLSGKVVLPCHFSTLPTLPPNYNTSEFLRIKWSKME
VDKNGKDIKETTTLVAQNGNIKIGQDYKGRVSVPTHPDDVGDASLTMVKLRASDAGVYRCVDMYGIEDTQ
DTMSLAVDGVVFHYRAATSRYTLLNFAAAQACLIDIGAVIASPEQLFAAYEDGFEQCDAGWLSQDQTVRYPI
RAPREGCYGDMMGKEGVRTYGFRRSPQETVDVYCVVDHLGDGVFHIITAPSKFTFEEAEAECTSRDARLATV
GELQAAWRNGFDQCDYGLSDASVRHPVTVARAQCGGGLLGVRTLYRFENQTCFPLPDSRFDAYCFKRRL
SDMIVSGHPIDSESKEEPCSEETDPLHDLFAEILPELPDSFEIDIIYHSEEDGEDGECVNATDVTTPPS
VQYINGKQLVTTVPKDPEAAEARRGQYESVAPSQNFPDSSATDTHQFILAETESSTTMQFKKSKEGTELL
EITWKPETYPETPDHVSSGEPDVFPTLSSHGKTRWSESISSPNLENPVHKQPKPVPLFPEESSGEG
AIEQASQETILSRATEVALGKETDQSPTLSTSSILSSSVSNVLEEEPLTLTGISQTDSEMSSTIESWVEI
TPSQTVKFSSESSAPIIEGSGEVEENKKNIFNMVTDLPQRDPTDLSPLDMSKIMITNHHIYIPATTAPL
DSKLPSPDARPTQFGIQTATSEWVSDKSFEGRKREDEEGAVNAHQGEVRAATERSDHLTLTPELESSN
VDASSDLATWEGFILETTPTSEKEMANSTPVFRETIGVANVEAQPFHSSSSSHPRVQEELTTLSGNPPS
LFTDLGSGDASTGMELITASLFTLDLESETKVKKELPSTPSPSVEISSSFEPTGLTPSTVLDIEIAGVMS
QTSQKTLISEISGKPTSQSGVRDLYTGPFMGEDFSGDFSEYPTVSYPTMKEETVGMGSSDDERVRDQTQTS
SSIPTTSDNIYPVPSKGPSTVASTTAFPWEEVMSSAEGSGEQLASVRSVGPVPLPLAVDIFSGTESPY
FDEEFEEVAAVTEANERPTVLPAAAGNTVDLTENGYIEVNSTMSLDFPQTMESKLSKWSKPEVNLKQEI
GRETVTKEKAQGGKTFESLHSSFAPEQTILETQSLIETEFQTSYDYSMLTTLKTYITNKEVEEEGMSIAHM
STPGPGIKDLESYTHPEAPGKSHSFATALVTESGAARSVLMDSSSTQEEESIKLFQKGVKLTNKNESNAD
LSFSGLSGGEALPPLPTTSVNL TDMKQIISTLYAETSHMESLGTSLGDKMEDHERMEDVSNEVRMLISK
TGSISQDSTEALDITL SHTGTEEPTTSTLPFVKLMDLERSPKQTLRWEETQTHRPTMSGLISNENSSA
SEAEAAATSPATAFLPQTYSVEMTKHFAPSESQPSDLFNVNSGEGSGEVDLTLVYTSQTTQASSQGSML
ASHGFLKHPVSKTEAGATDVSPASAMFLHHSEYKSSLYPTSTLPSTEPYKSPSEGIEDGLQDNIQFE
GSTLKPSRRKTTESIIIDLDKEDSKDLGLTITESAIVEILPELTSKNIIDIDHTKPVYIPIGIQTDL
DPEIKLESHGSSEESLQVQEKYEGAVTLPSTEESEFEGSGDALLAGYTQAIYNESVTPNDGKQAEDISFSF
ATGIPVSTETELHTFFPTASTLHIPSKLTTASPEIDKPNIEAISLDDIFESSTLSDGQAIADQSEVIST
LGHLEKTQEEYEEKKYGGPSFQPEFFSGVGEVLTDPAYVYVIGSTYLIQTLTELPNVVRPSDSTHYTEA
TPEVSSLAELSPQIPSSFPVYVDNGVSKFPEVPHTSAQPVSTVTSQKSIESPFKEVHANIEETIKPLG
GNVHRTEPPSMSRDPALDVSEDESKHKLEEELETSPKTPETSQDFPNKAKDHIPGETVGMLAGIRTESE
PVITADDMELGGATQPHSASAAFRVETGMVPQPIQQEPPERPTFPSLEINHETHTSLFGESILATSEKQV
SQKILDNSNQATVSSSTLDLHTAHALSPFSILDNSNETAFLIGISEESVEGTAVYLPGLDCKTNPCLNGG
TCYPTETSYVCTCAPGYSGDQCELDLDFECHSNPCRNGATCVDGFNTFRCLCLPSYVYGALCEQDTECDYG
WHKFQGCYKYFAHRRTWDAARECRLQGAHLSILSHEEQMFVNRVGHYQWIGLNDKMFHEHDFRWTGD
SALQYENWRPNQPSFFSAGEDCVVIIWHENGQWQNDVPCNYHLTYTCKKGTVACGQPPVVENAKTFGKMK
PRYEINSLIRYHCKDGF IQRHLPTIRCLGNRWAMPKITCMNPSAYQRTYSKKYLNSSSAKDNSINTSK
HEHRWSRRRQETR
  
```

TRTRPLE - GFP Tag - V

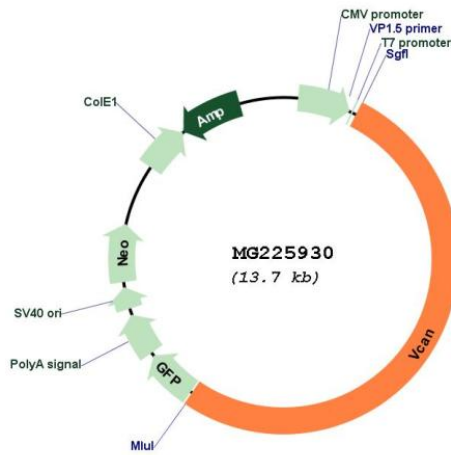
Restriction Sites: Sgfl-MluI

Cloning Scheme:

Cloning sites used for ORF Shutting:



Plasmid Map:



ACCN:

NM_019389

ORF Size:	7182 bp
OTI Disclaimer:	<p>Due to the inherent nature of this plasmid, standard methods to replicate additional amounts of DNA in E. coli are highly likely to result in mutations and/or rearrangements. Therefore, OriGene does not guarantee the capability to replicate this plasmid DNA. Additional amounts of DNA can be purchased from OriGene with batch-specific, full-sequence verification at a reduced cost. Please contact our customer care team at custsupport@origene.com or by calling 301.340.3188 option 3 for pricing and delivery.</p> <p>The molecular sequence of this clone aligns with the gene accession number as a point of reference only. However, individual transcript sequences of the same gene can differ through naturally occurring variations (e.g. polymorphisms), each with its own valid existence. This clone is substantially in agreement with the reference, but a complete review of all prevailing variants is recommended prior to use. More info</p>
OTI Annotation:	This clone was engineered to express the complete ORF with an expression tag. Expression varies depending on the nature of the gene.
Components:	The ORF clone is ion-exchange column purified and shipped in a 2D barcoded Matrix tube containing 10ug of transfection-ready, dried plasmid DNA (reconstitute with 100 ul of water).
Reconstitution Method:	<ol style="list-style-type: none"> 1. Centrifuge at 5,000xg for 5min. 2. Carefully open the tube and add 100ul of sterile water to dissolve the DNA. 3. Close the tube and incubate for 10 minutes at room temperature. 4. Briefly vortex the tube and then do a quick spin (less than 5000xg) to concentrate the liquid at the bottom. 5. Store the suspended plasmid at -20°C. The DNA is stable for at least one year from date of shipping when stored at -20°C.
RefSeq:	NM_019389.2 , NP_062262.2
RefSeq Size:	9552 bp
RefSeq ORF:	7185 bp
Locus ID:	13003
Cytogenetics:	13 45.5 cM