

Product datasheet for **MG225922**

Palld (NM_001081390) Mouse Tagged ORF Clone

Product data:

Product Type:	Expression Plasmids
Product Name:	Palld (NM_001081390) Mouse Tagged ORF Clone
Tag:	TurboGFP
Symbol:	Palld
Synonyms:	2410003B16Rik; 6030492A02
Mammalian Cell Selection:	Neomycin
Vector:	pCMV6-AC-GFP (PS100010)
E. coli Selection:	Ampicillin (100 ug/mL)
ORF Nucleotide Sequence:	>MG225922 representing NM_001081390 Red=Cloning site Blue=ORF Green=Tags(s)

TTTTGTAATACGACTCACTATAGGGCGCCGGGAATTCGTCGACTGGATCCGGTACCGAGGAGATCTGCC
GCC**CGATCGCC**

ATGTCAGAGACTTCTCCACGACTCCTTCTATGACTCCTTATCAGACGTGCAGGAAGAGGGCAAAGTG
CTGACTTCTTTCCAGGCCTCTGCTTTCTCAGCCAGGAAGAAATAAATAAAGCCTTGACCTGGCAGC
CAGAGCTATAGACAGCTCTGAACTGAAGATTTGACTCTGAGAAGGAGATCTCGCAGATTTTCAGCAAG
TCTCCATAAGCCTCTGCGAACTCCTTCCATGAGGAGCCGAAATCAGGCAAGCAGACTTCTCAGAAC
GACCTCAGGATAGCAGGCGAGCACCTGTCCAGCCTCTAACAGGAGATCAAGCTGAAAGGATCACTTCCCC
AGGTTCAAAGAGAAAACCCGGGGTATCACCCCTGCTGGCCAGCCCAAGCTACATCCGGAGCCTCCGCAAG
GCTGAAAAACGAGGTGCAAAAAATCCCAATCCAAGTTCAAAGCCAAAAGCTGCCAGCAAAGCAAGGCTG
GCCCCAGAGCCAAGTGTGCGACAAGGCGGCTAGTTTCATCGAGGAAGTACCTCCATATTTAGAGAAGC
GGCAAAGCCAAGGAACAGAAGCCCAATGGTGAGTCTCATCACAGACAGTGGGTATCTGTCTCTCTAAA
AATCAGCCATCAGCCCTGATGAGTGCCTCAGCCAGTCAGAGCCCACTGCAGACCAGCTAGATCAACTGG
AGATGGACGCAGAAGTCAAGCAAGCCAGGGCAGCCTTTGCTACCAGGCCACCAGGCCTCGGAAGAGAC
CTTGCCACTCGCTCACATCCCGCACCCACAGCCCAAGAAAGCCCGCCACTTGCCAACTGCACCTAGGTTT
ATCCAGAACTGAGGAGCCAAGAAGTTGCTGAAGGAAGCAGAGTTTATTTGGAGTGTAGAGTCACAGGAA
ACCCAACGCCAGGGTCAGATGGTTCTGTGAGGGGAAGGAGCTGTACAACAGTCCCTGACGTTTCAGATCCA
CTGCGAGAGTGGGGAGCTGCACACCTTGCTCATTGCTGAGGCCTTTGAGGACGACACAGGTGCTACACG
TGTCTGGCTACAAACCCAGTGGCTCAGACAGCACATCTGCAGAGGTGTTTATTGAAGGAGCCAGTTCAA
CGGACTCTGACAGCGAAAGCTTATCTTTTCATATCAAAGCTGGAGCCATGCCACAAGCTCAGAAGAAAAC
AACGTCGGTTTCTTAACGATAGGATCCTCAGTCCGAAAACAGGAGTGACCACAGCTGTGATTACAGCCC
CTATCTGTGCCCGTCCAACAGGCTCACAGCGCTACTTCATATCTCTGCCGACCTGACGGAACCCATGG
GCTGCCTTCTTCTGTTTTACTAAGGAACACAGAACACAGCAGCCTCCGAGGGCCAGGTGGTGGTGTCT
GGATGCAGAGTCCGAGGGGCACCCCGCTGCAGGTCCAGTGGTTCGGCAAGGAAGTGAATCCAAGAC



[View online >](#)

TCTCCGGACTTCAGAATTCTCCAGAAAAACCCAGATCGACAGCTGAACCCGAGGAGATCTGCACCCCTG
 TCATTGCTGAGAGTTTCCTGAAGATGCAGGCATCTTTACCTGCTCAGCCACAAATGACTACGGCTCAGT
 GACCAGCACTGCACAGCTTGTATAACCTCCGCCAACACGAGAAGTGTAGTTACGACTCAACAGGAGAA
 CCCAACAGTGATCACTTCCAACACTTCCACCTCCCCCTCCGATCCTGGAGACAGGCTCCTATGAGCTGG
 CATCCCAGAAACCATCTGAAATCCAGCAGGTGAACAGCCCAATTTAGGATTTAGCATGGCAGCTTCA
 AATGCAATTCAACTGCAGAGAGGGAGACCAACGGAGTCCATCCCAGCCATGGAGTCAACGGGCTGATT
 AATGGCAAAGCTTATGGCAATAAATCTCCTCCAACACCAACTGCCCTGCTTCCACCCACTAAGGAACCA
 CGCCACTCCTTGCCAAACCCAAACTGGGGTTCCTCAAGAAAGTCCAGTAGAACTGCTAGAATTCCTCTGA
 TGAGGAGATTCAAGGCACAAAGGATGCTGTCTCAAGACCTGGAACGGAAGCTTCGCTTCAAGGAGAC
 CTTCTGAACAATGGCAAACCGAGGCTAACCTATGAGGAAAGAATGGCTCGCCGCTGCTTGGAGCCGACA
 GCGCAAACGCTTCAACATCCAGGAGCCAGAGGAAACGGCAGCCAATCAGGAGTACAAAGTCTCTAGCTG
 CGAGCAGAGGCTGATTAGCGAGATTGAGTACCGGCTGGAGCGCTCCCTGTGGATGAGTCGGGAGACGAG
 GTGCAGGATCCAGATGTGCTGTGGAGAACGCAACAGCTCCCTTCTTTGAGATGAAGCTGAAACACTACA
 AGATCTTTGAGGGGATGCCGGTACTTTCACGTGTCGAGTGGCTGGGAATCCAAAGCCAAAGATCTATTG
 GTTTAAAGATGGGAAGCAGATTTCTCCGAGAGCGATCACTACACCATTAGAGAGACCTTGATGGGACC
 TGCTCTCTCCACACCACGGCCTCTACCCTAGACGACGATGGGAATACACCATCATGGCTGCCAACCCCTC
 AGGGTCGCGTCAGTTGTACAGGAAGGCTAATGGTACAGGCTGTCAACCAAAGAGGCCGAGTCCCCGCTC
 TCCTCAGGCCATCCTCATGCCAGAAGGCTCGCTCTCGATCACGGGACAGTGGAGATGAAAACGAGCCC
 ATTCAGGAGCGATTCTTCAGACCTCACTTCTGCAGGCTCCTGGAGACCTGACCGTTTCAGGAAGGCAAGC
 TCTGCAGGATGGACTGCAAGGTCAGTGGGTTACCAACCCAGATCTCAGCTGGCAACTAGATGGAAGCC
 CATAACGCCCCGACAGTGTCAACAAGATGCTGGTCCGTGAGAATGGGGTCCACTCCCTCATTATAGAGCCA
 GTCACGTCCCGGACGCGGCATCTACACATGTATTGCCACCAACAGAGCAGGACAGAAGCTGTTTAAACC
 TGGAGCTTGTGGTTGCTGCTAAGGAAGCACACAAGGCCCTGTGTTTATGGAGAAGCTACAGAATACCGGG
 GGTTGCTGATGGATACCCAGTGGGCTGGAATGCCGTGTCTCGGAGTGGCCACCTCAGATATTTTGG
 AAGAAAAGAAAATGAATCGCTCACTCACGCACTGAGCGAGTAAGCATGCCACAGGATAATCATGGCTACA
 TCTGCCTGCTCATCCAGGAGCCACAAAGGAAGACGCTGGGTGGTACACTGTGTCCGCCAAGAACGAAGC
 AGGCATTGTGCTGCACTGCCCGCTGGATGTCTACATTTCCCGACAT

ACGCGTACGCGGCCGCTCGAG - GFP Tag - GTTTAA

Protein Sequence:

>MG225922 representing NM_001081390
 Red=Cloning site Green=Tags(s)

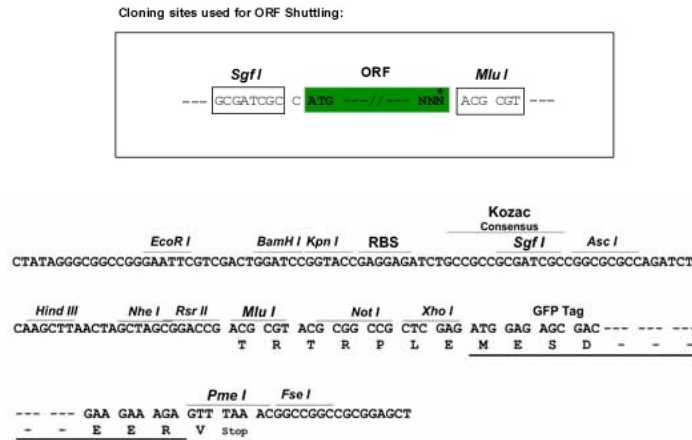
MSETSSHDSFYDSLSDVQEEGKSADFFPGLSAFLSQEEINKSLDLARRAIDSSETEDFDSEKEISQIFSK
 SPISLCETPSHEEPKSGKQTSERPQDSRRAPVQPLTGDQAERITSPGSKRKPGVSPLLASPSYIRSLRK
 AEKRGAKNPNPSSKPKTAQQSKAGPQSQLCDKAASFIEELTSIFREAAKPRNRSPNGESSPDSGYLSPK
 NQPSALMSASASQSPTADQLDQLEMDAEVKQAQGSLEYQAHQASEETLPLAHIHPHPQPKARHLPTAPRF
 IQKLRSQVEAEGSRVYLECRVTGNPTPRVRFCEGKELYNPSPDVQIHCEGELHTLVIAEAFEDDTGRYT
 CLATNPSSDSTSAEVFIEGASSTDSSELSFISKAGAMPQAQKTTSVSLTIGSSAPKTGVTTAVIQP
 LSVPVQQAHSATSYLCRPDGTTMGCLLPVFTKELQNTAASEGQVVVLECRVRGAPPLQVQWFRQSGEIQD
 SPDFRILQKKPRSTAEPEEICTLVIAESFPEDAGIFTCSATNDYGSVTSTAQLVITSANNENCSYDSTGE
 PNSDHFQHFPPPPPILETGSYELASQKPEIQQVNSPNLGFMAALQMQFNTERETNGVHPSHGVNGLI
 NGKAYGNKSPPTPTALLSPTKEPPPLLAKPKLGFPPKSSRTARIASDEEIQGTDKAVIQDLERKLRFKED
 LLNNGQPRLYEERMARRLLGADSANVFNIQEPEETAANQEYKVSCEQRLISEIEYRLERSPVDESQDGE
 VQDPDVPVENATAPFFEMKLRHYKIFEGMPVTFTRVAGNPKPKIYWFKDGKQISPKSDHYTIQRDLGDT
 CSLHTTASTLDDDGNYTMAANPQGRVSTGRMLMVQAVNQGRSPRSPSGHPHARRPRSRSDSDENEP
 IQERFFRPHFLQAPGDLTVQEGKLCRMDCKVSGLPTPDLQSWQLDQKPIRPDSAHKMLVRENGVHSLIEP
 VTSRDAGIYTCIATNRAGQNSFNLELVAAAKEAHKAPVFMKLNQNTGVADGYPVRECRVSGVPPPIQIFW
 KKENESLTHSTERSMHQDNHGYICLLIQGATKEDAGWYTVSAKNEAGIVSCTARLDVYISRH

TRTRPLE - GFP Tag - V

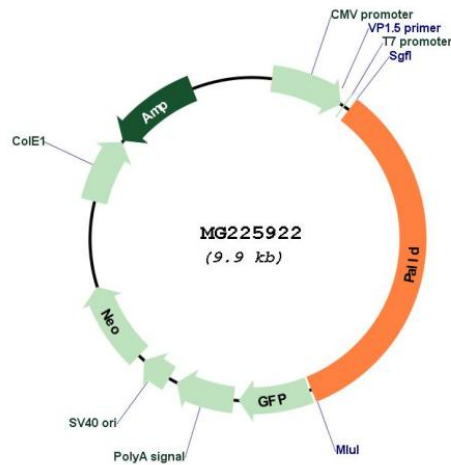
Restriction Sites:

Sgfl-MluI

Cloning Scheme:



Plasmid Map:



ACCN: NM_001081390

ORF Size: 3339 bp

OTI Disclaimer: The molecular sequence of this clone aligns with the gene accession number as a point of reference only. However, individual transcript sequences of the same gene can differ through naturally occurring variations (e.g. polymorphisms), each with its own valid existence. This clone is substantially in agreement with the reference, but a complete review of all prevailing variants is recommended prior to use. [More info](#)

OTI Annotation: This clone was engineered to express the complete ORF with an expression tag. Expression varies depending on the nature of the gene.

Components:	The ORF clone is ion-exchange column purified and shipped in a 2D barcoded Matrix tube containing 10ug of transfection-ready, dried plasmid DNA (reconstitute with 100 ul of water).
Reconstitution Method:	<ol style="list-style-type: none">1. Centrifuge at 5,000xg for 5min.2. Carefully open the tube and add 100ul of sterile water to dissolve the DNA.3. Close the tube and incubate for 10 minutes at room temperature.4. Briefly vortex the tube and then do a quick spin (less than 5000xg) to concentrate the liquid at the bottom.5. Store the suspended plasmid at -20°C. The DNA is stable for at least one year from date of shipping when stored at -20°C.
RefSeq:	<u>NM_001081390.2</u>
RefSeq Size:	3566 bp
RefSeq ORF:	3342 bp
Locus ID:	72333
UniProt ID:	<u>Q9ET54</u>
Cytogenetics:	8 B3.1
Gene Summary:	<p>Cytoskeletal protein required for organization of normal actin cytoskeleton. Roles in establishing cell morphology, motility, cell adhesion and cell-extracellular matrix interactions in a variety of cell types. May function as a scaffolding molecule with the potential to influence both actin polymerization and the assembly of existing actin filaments into higher-order arrays. Binds to proteins that bind to either monomeric or filamentous actin. Localizes at sites where active actin remodeling takes place, such as lamellipodia and membrane ruffles. Different isoforms may have functional differences. Involved in the control of morphological and cytoskeletal changes associated with dendritic cell maturation. Involved in targeting ACTN to specific May be required for the initiation of neural tube closure.[UniProtKB/Swiss-Prot Function]</p>