

Product datasheet for **MG225917**

Gli2 (NM_001081125) Mouse Tagged ORF Clone

Product data:

Product Type:	Expression Plasmids
Product Name:	Gli2 (NM_001081125) Mouse Tagged ORF Clone
Tag:	TurboGFP
Symbol:	Gli2
Synonyms:	AW546128
Mammalian Cell Selection:	Neomycin
Vector:	pCMV6-AC-GFP (PS100010)
E. coli Selection:	Ampicillin (100 ug/mL)
ORF Nucleotide Sequence:	>MG225917 representing NM_001081125 Red=Cloning site Blue=ORF Green=Tags(s)

TTTTGTAATACGACTCACTATAGGGCGCCGGGAATTCGTCGACTGGATCCGGTACCGAGGAGATCTGCC
GCC**CGATCGCC**

ATGGAGACTTCTGCCCCAGCCCCTGCACTGGAGAAGAAAGCAAGAGTGGTCTCTTGGAGGACAGCA
GCTTCCCCGACCCAGGGAAAAAGGCCTGTCTCTGGCGGTGGCCGACGCTGTAGCCGCCACGGAGTTCC
TCAGCAGCTCCTGCCGGCTTCCACGCGCCTTTGCCGATTGACATGAGACACCAGGAGGGAAAGTACCAT
TATGACCCTCACTCTGTCCACAGTGTACACGGCCTCCCACCCTAAGTGGCAGCCCCTTCATCTCAGATA
TCTCCTTGATACGACTTCTCCACACCCTGCTGGCCCTGGAGAGTCACCCTTCAGCGCCACCACCCTA
CGTGAACCCCATATGGAGCACTACCTCCGGTCTGTGCACAGCAGCCCCCACTCTCAATGATCTCTGCC
GCCAGGGGCTCAGCCCTGCTGATGTGGCCACGAACATCTGAAAGAGAGGGGACTCTTTAGCCTCGCAG
CCCCAGGCACCAACCTTCAGACTATTACCACCAGATGACCCTCATGGCAAGCCACCCACCCCTTATGG
GGACCTTCTAATGCAGAGCGGGGTGCTGCTAGCGCACCCCATCTCCATGACTACCTCAACCCTGTGGAT
GCATCAGATTCTTAGTCCACGTGTGACCCACGACTGAGCCGCAAGCGGGCTCTGTCCATCTCCCCGC
TCTCAGATGCCAGCCTCGACCTACAACGCATGATTCGGACCTCTCCAACTCGTGGTAGCTTACATCAA
CAACTCCAGGAGCAGCTCAGCAGCCAGTGGCTCTTATGGACATCTGTCTGCTGGTGCCTCAGCCCAGCC
TTCACCTTTCCCCACCCCATCAATCCTGTGGCCTACCAGCAGATCCTGAGCCAGCAGCGGGCCTGGGCT
CAGCCTTTGGACACACACCACCCTGATCCAGCCTTCACCACCTTCTTGCCCGCAGCAGCCATGACTCT
CACCTCCATCAGCACCATGCCTACCCAACCTCAGCAGCAGTAGCAGCAACTGTCTAAATGATGCCAACAG
AACAAAGCAGAACAGCGAGTCACTGTGAGCAGCACCGTGAACCCCATCACCATTCAAGCGGAGCAAGG
TCAAGACTGAGGCTGAGGGCCTGCGTCCAGCATCCCCGCTTGGACTGACACAGGAGCAGCTGGCCGATCT
CAAGGAAGACCTGGACAGGGATGACTGTAAGCAGGAGGCCGAGGGTGTCTCTACGAGACCAACTGCCAC
TGGGCAGACTGCACCAAGGAGTATGACACACAGGAGCAGCTGGTGCATCATATCAACAATGAACACATCC
ACGGGGAGAAGAAGGAGTTCGTGTGCCGCTGGCAGGCCTGCACGAGAGAGCAGAAGCCCTCAAGGCCCA
GTACATGTGTTGTTCCATGCGCAGACACACGGGTGAGAAGCCACACAAGTGCAGTTGAAGGCTGT



[View online >](#)

TCCAAGGCCTACTCTCGCCTGGAGAACCTGAAGACACACCTGCGTTCACACACAGGAGAGAAGCCATATG
TGTGTGAACACGAAGGCTGTAACAAAGCCTTCTCCAATGCCTCAGACCGGCCAAGCACCAGAACCACGAC
TCACTCCAATGAGAAACCTACATCTGCAAGATCCCAGGCTGCACCAAGAGGTACACAGACCCCAGCTCA
CTCCGCAAGCATGTGAAGACTGTCCATGGGCCAGACGCCCATGTCACCAAGAAACAGCGTAATGATGTGC
ATGTCCGTGCTCCACTGCTCAAGGAGAAATGGGGATAATGAGGCCAGCGCCGAGCCAGGTGGCCGGGGACC
TGAGGAGAGTGTGGAGGCCAGTAGCACCAGCCACACTGTGGAGGACTGCCTACATATCAAAGCCATCAAG
ACAGAGAGTCCGGGCTTTGTGTCAGTCCAGCCCCGGGGCCAGTCATCCTGCAGCAGCGAGCCCTCTCCCC
TGGGCAGTGCCCCAACAAATGACAGTGGCATGGAGATGCCGGGGACAGGGCCTGGGAGTCTGGGAGACCT
GACAGCACTGGCTGACACGTGTCCAGGACTGACACCTCAGCCCTGGCTGCACCCCTCACTGGTGGCCTG
CAGCTGCGCAAACACATGAGCACCGTGCATCGCTTTGAGCAGCTGAAGAGAGAGAAGCTCAAGTCACTGA
AGGATTCTGCTCGTGGGCCGGCCAGCTCCACACACCCGCAACACCAAGCTGCCCTCCCTTCCAGTCAA
TGGTTCTGTCTGGAAAACCTTCAACAATACAGGGGGCGGTGGACCGGCAGGACTGCTGCCAGCCAGCGG
CTACCAGAGCTGACCGAAGTACGATGCTGAGCCAGCTGCAGGAACGAAGAGACAGCTCCACCAGCACCA
TGAGCTCGGCCTACACTGTGAGCCGCCGCTCCTCTGGCATCTCCCATACTTCTCTAGCCGTGCTCCAG
CGAGGCTTCGCTCTCGGTGGCCTACGCCCGCACAAACGCCAGCTCAGCAGACTCCTATGACCCCATCTCC
ACAGATGCCTCTCGGCGCTCCAGTGAAGCCAGCCAGTGCAGTGGCGGTGGCCAGGGCTGCTCAACCTCA
CACCTGCGCAGCAGTACAACCTGCGTGCCAAGTACGCAGCGGCCACAGGTGGACCACCGCCACGCCACT
GCCGGGCTCGATCGTGTAAAGCCTTCGTACCCGCTGGCCTTGCTGGATGCTCCTGAGCGTGCATTCCT
GGTGCCTGCCACATCCACTGGGGCCACGGCGTGGCAGCGATGGGCTACCTATAGCCATGGTCAATGGCC
ATGGCTACGCAGGTGGGCTCCAGCATTCCCCACGAGGGGCCAAACAGCAGCACACGGCGGGCCAGCGA
CCCTGTGGCGGCCCTGACCCCTTATTCTGCCTCGAGTGCAACGTTTCCACAGTACCCACAACATGAAT
CCAGTTCACTGCCACCTGCGTGTGATCGGCTGGCCTGCACGTACAGAGCCACCCAGCGTAGACAGCA
ACCTGACCCGCAACGCCTACTCTCCAGACCCCTAGCATCAATGAGAAGTGGTATGGAGCCGTGGC
TGCTGGGGTAGACGGCCAGGGCTAGAGTGGCAGCTGGGCTGGTGGAGGATGAGCTGGTCTGCCAGAT
GATGTGGTACAGTACATCAAGGCTCACACCGGTGGTACCTTGGATGACGGCATTGGCAGGGGTATCCCA
CAGAAGGTACTGGCTTCCCCGAGAACTCTAAGTGCCTGCTGGGCTACAAGGCCACCGCAGGCTAGC
AGCTGCCGACTCCAACATGGGTCTTCTGCTCCTGGACTCGGGGCTGCCAGCTGAGCTACAGCCCTCC
TCCAACCTCAACAAGAGCAACATGCCTGTGCAGTGGAAATGAGGTGAGTTCTGGCACCGTGGATGCCCTGC
CTACCCAGGTGAAGCCACCTCCTTCCCTCACAGCAACCTGGCTGTGGTCCAACAGAAGCCAGCCTTTGG
CCAGTATCCAGGATATAATCCACAATCCGTGCAGAGCAGCTCCGGAGGTCTAGACAGCACCAGCCGCAC
CTACAGCTTCGAGGAGCCCCCTTCGCATCAAGAGGGAGCTACACGCAACAGCCTCGACAGCCAGCTGCAG
GCAGTCAGTGCCTGGGTATGAGTGCAGGCTAGAGCCCGCAGGCCAGCTACAGCCAAGCCACCCCAAGCT
GAGCCCAAACATTGTGACGCGATCTCTGAACAGTTTTTCTCCCTCCTGCAGCAATATGGCAGCCAAGCCC
AGCCACCTGGGACTCCCTCAGCAAAATGGAAGTTGTCCCAATGCCACCATCATGAATGGCCATCAACGGG
AGCACGGGGTCCCAATTTCATCCCTGGCTGCGGTGCACAACCTCACCCAGTCTGAGCTATCCCCAGCA
GGACAGCTACCAACAGGGCTCCAACCTTCTGTCATCCCATCAGCCTGGCTTCATGGAGTCCCAGCAGAAC
GCGGGCTTTGGTCTCATGCAGCCTCGGCCACCCCTGGAACCCAACAGGCCAGCCGTACCCGTGGAGTAC
GTTCTGGGCAACAGCAGTTGTATGCCAGGACCCTGGCCAAGCCATGGTACATCAGCCAACCAAGAGAC
AGCAGAAGCTATGCCAAGGGACCAGCAGGGACCATGGTATCCCTAGCTCCTCAGCCATCTCAGGACACA
GGCGGGGCACAAGATCAGAACACGCTATACTACTATGGCCAGATCCACATGTATGAACAGAATGGAGGCT
GCCAGCCGTGCAGCCCCAGCCGCACAACCACAAGCTTGTCTCAGACAGTATCCAGCCTGAGCCTTTGCC
TTCACCGGGAGTCAACCAGGTGTCTAGCACCGTGGACTCCAGCTCCTGGAGCCCCCAGATTGACTTT
GATGCCATCATGGATGATGGTATCACTCGAGTTTGTCTTCTGGTGCAGTGGCCCAACCCCTTCTCCACA
ATCTCTCCAGAATTCTCACGCCTCACACACCCCGAATTCTTGACTGCTCCCTCCATCCCTGCGGG
CATCAGCAACATGGCCGTGGGCGACATGAGTTCATGCTCACCAGCCTGGCTGAAGAGAGCAAGTTTTTT

ACGCGTACGCGGCCGCTCGAG - GFP Tag - GTTTAA

Protein Sequence: >MG225917 representing NM_001081125
 Red=Cloning site Green=Tags(s)

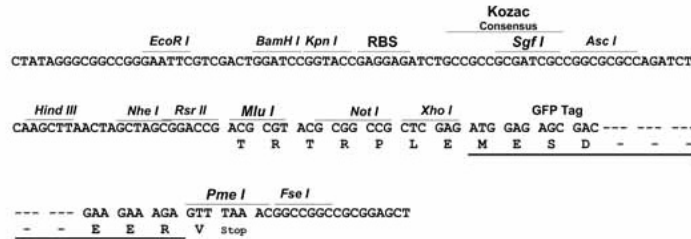
METSAPAPALEKKEAKSGLLEDSSFPDPGKKACPLAVAAVAHAHVPQQLLPAFHAPLPIDMRHQEGRYH
 YDPHSVHSVHGPPTLSGSPFISDLSIRLSPHPAGPGESESAHHPYVNPHEHYLRSVHSSPTLSMISA
 ARGLSPADVAHEHLKERGLFSLAAPGTNPSDYYHQMTLMASHPTPYGDLMLQSGGAASAPHLHDYLNPDV
 ASRFSSPRVTPRLSRKRALSISPLSDASLDLQRMIRTPNSLVAYINNSRSSSAASGSYGHLSAGALSPA
 FTFPHPINPVAYQILSQQRGLGSAFGHTPPLIQPSPTFLAQQPMPLTSISTMPTQLSSSSNCLNDANQ
 NKQNSAVSSTVNPITIHKRSKVKTEAEGLRPASPLGLTQEQLADLKEDLDRDDCKQEAEAGVIYETNCH
 WADCTKEYDTQEQLVHHINNEIHEGKKEFVCRWQACTREQKPFKAQYMLVVMRRHTGKPKHCTFEGC
 SKAYSRLLENLKTHLRSHTGKPYVCEHEGCNKAFAASDRAKHQNRTHSNEKPYICKIPGCTKRYTDPSS
 LRKHVKTVHGPDAHVTKQRNDVHVRAPLLKENDNEASAEPGGRGPEESVEASSTHTVEDCLHIKAIK
 TESSGLCQSSPGAQSSCSSEPSPLGSAPNDSGMEMPGTGPGSLGDLTALADTCPGADTSALAAPSTGGL
 QLRKHMSTVHRFEQLKREKLKSLKDCSCWAGPAPHTRNTKLPLPVNGSVLENFNNTGGGGPAGLLPSQR
 LPEL TEV TMLSQLQERRDSSTSTMSSAYTVSRRSSGISPYFSSRRSSEASPLGGLRPHNASSADSYDPI
 TDASRRSSEASQCSGGGGLNLLTPAQYNLRAKYAAATGGPPPTPLPGLDRVSLRTRLALLDAPERALP
 GACPHPLGPRRSDGPTYSHGHGHGYAGAAPAFPHGPNSSSTRASDPVRRDPDILPRVQRFHSTHNMN
 PGSLPPCADRRGLHVQSHPSVDSNLTRNAYSPPRPPINENVVMEAVAAGVDGPGLECDLGLVEDELVLPD
 DVVQYIKAHGTGTLDDGIRQGYPTGTFPENSCLPSPGLQGHRLAAADSNMGPAPGLGGCQLSYSPS
 SNLNKSNMPVQWNEVSSGTVDALPTQVKPPFPHSNLAVVQKPAFGQYPGYNPQSVQSSSGGLDSTQPH
 LQLRGAPASARGSYTQPRQPAAGSQCLGMSAAMPQASYSQAHPQLSPNIVSGSLNQFSPSCSNMAAKP
 SHLGLPQQMEVVPNATIMNGHQREHGVNSSLAAVSQPHVLSYPQQDSYQQGSNLLSSHQPGFMESQQN
 AGFGLMQPRPPLPENTASRRHRGVRSGQQLYARTTGQAMVTSANQETAAMPKGPAGTMVSLAPQPSQDT
 GRAQDQNTLYYYGQIHMYEQNGGCPAVQPQPPQACSDSIQPEPLSPGPNQVSVSDSQQLEPPQIDF
 DAIMDDGDHSSLFSGALSPDLLHNLSONSSRLTTPRNSLTLPSIPAGISNMAVGMSSMLTSLAEESKFF

TRTRPLE - GFP Tag - V

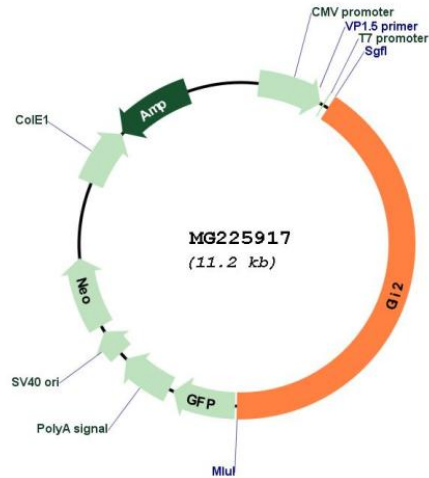
Restriction Sites: SgfI-MluI

Cloning Scheme:

Cloning sites used for ORF Shutting:



Plasmid Map:



- ACCN:** NM_001081125
- ORF Size:** 4632 bp
- OTI Disclaimer:** The molecular sequence of this clone aligns with the gene accession number as a point of reference only. However, individual transcript sequences of the same gene can differ through naturally occurring variations (e.g. polymorphisms), each with its own valid existence. This clone is substantially in agreement with the reference, but a complete review of all prevailing variants is recommended prior to use. [More info](#)
- OTI Annotation:** This clone was engineered to express the complete ORF with an expression tag. Expression varies depending on the nature of the gene.
- Components:** The ORF clone is ion-exchange column purified and shipped in a 2D barcoded Matrix tube containing 10ug of transfection-ready, dried plasmid DNA (reconstitute with 100 ul of water).

Reconstitution Method:

1. Centrifuge at 5,000xg for 5min.
2. Carefully open the tube and add 100ul of sterile water to dissolve the DNA.
3. Close the tube and incubate for 10 minutes at room temperature.
4. Briefly vortex the tube and then do a quick spin (less than 5000xg) to concentrate the liquid at the bottom.
5. Store the suspended plasmid at -20°C. The DNA is stable for at least one year from date of shipping when stored at -20°C.

RefSeq: [NM_001081125.1](#), [NP_001074594.1](#)

RefSeq Size: 6708 bp

RefSeq ORF: 4635 bp

Locus ID: 14633

UniProt ID: [Q0VGT2](#)

Cytogenetics: 1 52.17 cM

Gene Summary: Functions as transcription regulator in the hedgehog (Hh) pathway (PubMed:9006072). Functions as transcriptional activator (PubMed:10806483). May also function as transcriptional repressor (PubMed:10433919). Requires STK36 for full transcriptional activator activity (PubMed:10806483). Binds to the DNA sequence 5'-GAACCACCCA-3' which is part of the TRE-2S regulatory element (By similarity). Is involved in the smoothened (SHH) signaling pathway (PubMed:10433919). Required for normal skeleton development (PubMed:9006072). [UniProtKB/Swiss-Prot Function]