

## Product datasheet for **MG225906**

### **Bsg (NM\_001077184) Mouse Tagged ORF Clone**

#### Product data:

**Product Type:** Expression Plasmids  
**Product Name:** Bsg (NM\_001077184) Mouse Tagged ORF Clone  
**Tag:** TurboGFP  
**Symbol:** Bsg  
**Synonyms:** AI115436; AI325119; CD147; EMMPRIN; HT-7  
**Mammalian Cell Selection:** Neomycin  
**Vector:** pCMV6-AC-GFP (PS100010)  
**E. coli Selection:** Ampicillin (100 ug/mL)  
**ORF Nucleotide Sequence:** >MG225906 representing NM\_001077184  
 Red=Cloning site Blue=ORF Green=Tags(s)

TTTTGTAATACGACTCACTATAGGGCGGCCGGAATTCGTCGACTGGATCCGGTACCGAGGAGATCTGCC  
 GCC**CGATCGCC**

ATGGCGGCGGCGCTGCTGCTGGCGCTGGCCTTCACGCTCTTGAGCGGCCAAGGCGCTGCGCGGCGCGG  
 GCACCATCCAACCTCTGTCCAGGAAGTCAACTCCAAAACACAGCTTACCTGCTCTTTGAACAGCAGTG  
 CGTTGACATCGTTGGCCACCGCTGGATGAGAGGTGGCAAGGACTGCAGGAGGACACTCTGCCGACCTG  
 CATAACGAAGTACATAGTGGACGCAGATGACCGCTCTGGGAATATTCCTGCATCTCCTTCTGAGCCTG  
 TGGGCAGAAGCGAGATCAATGTGAAGGCCACCCAGGATCAAGGTCGGAAGAAATCAGAGCATTCCAG  
 TGAGGGAGAGCTTGCGAACTGGTCTGCAAGTCCGATGCATCCTACCCTCTATTACAGATTGGTTCTGG  
 TTTAAGACCTCTGACACTGGGGAAGAAGAGGCAATCACCAATAGCACTGAAGCCAATGGCAAGTATGTGG  
 TGGTATCCACGCCTGAGAAGTCACAGCTGACCATCAGCAACCTTGACGTAATGTTGACCCTGGCACCTA  
 CGTGTGTAATGCCACCAACGCCAGGCCACTACTCGGAAACCATCTCACTGCGTGTGCGGAGCCGCATG  
 GCAGCCCTCTGGCCCTTCTAGGCATCGTGGCTGAGGTCTGGTGTGGTTACCATCATCTTTATCTATG  
 AGAAGAGGCGGAAGCCAGACCAGACCCTGGACGAGGATGACCCTGGCGCCGCCCACTGAAGGGCAGTGG  
 AACTCACATGAATGACAAGGACAAGAATGTACGCCAGAGGAACGCCACC

**ACGCGTACGCGGCCGCTCGAG** - GFP Tag - GTTTAA



[View online »](#)

**Protein Sequence:** >MG225906 representing NM\_001077184  
Red=Cloning site Green=Tags(s)

MAAALLLALAFTLLSGQGACAAAGTIQTSVQEVNSKTQLTCSLNSSGVDIVGHRWMRGGKVLQEDTLPDL  
 HTKYIVDADDRSGEYSICIFLPEPVGRSEINVEGPPRIKVGKKSEHSSEGELAKLVCKSDASYPPITDWF  
 FKTSDTGEEEAITNSTEANGKYVVVSTPEKSQLTISNLDVNVDPGTYVCNATNAQGTTRETISLRVRSRM  
 AALWPFLGIVAELVVLVTIIFIYEKRRKPDQTLDEDDPGAAPLKSGSHTMNDKDKNVRQRNAT

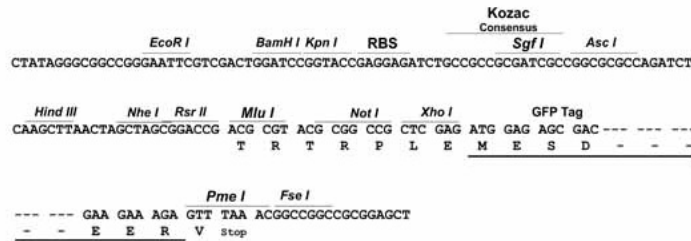
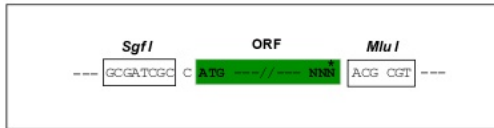
TRTRPLE - GFP Tag - V

**Chromatograms:** [https://cdn.origene.com/chromatograms/ja1758\\_g01.zip](https://cdn.origene.com/chromatograms/ja1758_g01.zip)

**Restriction Sites:** SgfI-MluI

**Cloning Scheme:**

Cloning sites used for ORF Shutting:



**ACCN:** NM\_001077184

**ORF Size:** 819 bp

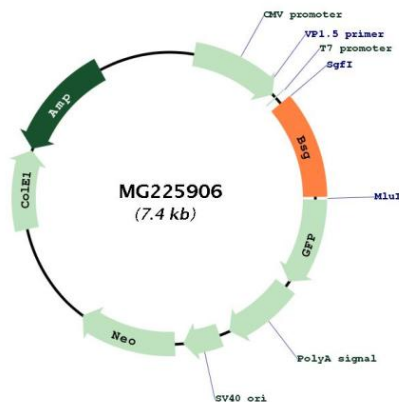
**OTI Disclaimer:** Due to the inherent nature of this plasmid, standard methods to replicate additional amounts of DNA in E. coli are highly likely to result in mutations and/or rearrangements. Therefore, OriGene does not guarantee the capability to replicate this plasmid DNA. Additional amounts of DNA can be purchased from OriGene with batch-specific, full-sequence verification at a reduced cost. Please contact our customer care team at [custsupport@origene.com](mailto:custsupport@origene.com) or by calling 301.340.3188 option 3 for pricing and delivery.

The molecular sequence of this clone aligns with the gene accession number as a point of reference only. However, individual transcript sequences of the same gene can differ through naturally occurring variations (e.g. polymorphisms), each with its own valid existence. This clone is substantially in agreement with the reference, but a complete review of all prevailing variants is recommended prior to use. [More info](#)

**OTI Annotation:** This clone was engineered to express the complete ORF with an expression tag. Expression varies depending on the nature of the gene.

<b>Components:</b>	The ORF clone is ion-exchange column purified and shipped in a 2D barcoded Matrix tube containing 10ug of transfection-ready, dried plasmid DNA (reconstitute with 100 ul of water).
<b>Reconstitution Method:</b>	<ol style="list-style-type: none"> <li>1. Centrifuge at 5,000xg for 5min.</li> <li>2. Carefully open the tube and add 100ul of sterile water to dissolve the DNA.</li> <li>3. Close the tube and incubate for 10 minutes at room temperature.</li> <li>4. Briefly vortex the tube and then do a quick spin (less than 5000xg) to concentrate the liquid at the bottom.</li> <li>5. Store the suspended plasmid at -20°C. The DNA is stable for at least one year from date of shipping when stored at -20°C.</li> </ol>
<b>RefSeq:</b>	<u>NM_001077184.1, NP_001070652.1</u>
<b>RefSeq Size:</b>	1404 bp
<b>RefSeq ORF:</b>	822 bp
<b>Locus ID:</b>	12215
<b>UniProt ID:</b>	<u>P18572</u>
<b>Cytogenetics:</b>	10 39.72 cM
<b>Gene Summary:</b>	Plays an important role in targeting the monocarboxylate transporters SLC16A1, SLC16A3, SLC16A8, SLC16A11 and SLC16A12 to the plasma membrane. Plays pivotal roles in spermatogenesis, embryo implantation, neural network formation and tumor progression. Stimulates adjacent fibroblasts to produce matrix metalloproteinases (MMPS). Seems to be a receptor for oligomannosidic glycans. In vitro, promotes outgrowth of astrocytic processes. [UniProtKB/Swiss-Prot Function]

### Product images:



Circular map for MG225906