

Product datasheet for **MG225903**

Atp7a (NM_009726) Mouse Tagged ORF Clone

Product data:

Product Type:	Expression Plasmids
Product Name:	Atp7a (NM_009726) Mouse Tagged ORF Clone
Tag:	TurboGFP
Symbol:	Atp7a
Synonyms:	MNK
Mammalian Cell Selection:	Neomycin
Vector:	pCMV6-AC-GFP (PS100010)
E. coli Selection:	Ampicillin (100 ug/mL)
ORF Nucleotide Sequence:	>MG225903 representing NM_009726 Red=Cloning site Blue=ORF Green=Tags(s)

TTTTGTAATACGACTCACTATAGGGCGGCCGGAATTCGTCGACTGGATCCGGTACCGAGGAGATCTGCC
GCC**CGATCGCC**

ATGGAGCCAAGTGTGGATGCAAATTC AATTACTATCACTGTTGAGGGAATGACATGTATTTCTGTGTCC
GGACCATTGAACAGCAGATTGGGAAAAGTGAATGGTGTCCATCACATTAAGTTTCACTAGAAGAAAAGAG
TGCAACCATTATTTATGACCCTAACTTCAGACTCCAAAGACCCTCCAAGAAGCTATCGATGACATGGGC
TTTGATGCTCTTCCACAATGCTAACCCCTCCCTGTCTTAACCAATACCGTGTCTCTGACTGTTACTG
CTCCACTGACTCTGCCTTGGGACCATATCCAAAGTACATTGCTCAAGACCAAGGGTGTGACTGGTGTAA
GATTTCCCTCAGCAAAGAAGTGCAGTAGTCACCATAATTCATCTGTGGTGAGTGCCAGTCAGATTGTG
GAGCTGGTCCCAGACCTCAGTTTAGACATGGGAACTCAGGAGAAAAGTCAAGGAGCTTGTGAAGAGCACA
GCACGCCTCAGGCAGGGGAAGTCATGCTGAAGATGAAAGTGAAGGGATGACCTGCCATTCATGTA
CACCATTGAAGGAAAAGTTGGAAAGCTGCAAGGTTCAGCGCATTAAAGTGTCCCTAGACAACCAAGAA
GCTACTATTGTTTTCAACCTCATCTCATCAGCAGAGGAAAATAAAGAAGCAGATTGAAGCCGTGGGTT
TCCCAGCCTTCATAAAAAAGCAGCCGAAGTACCTCAAATGGGAGCCATTGATGTTGAGCGCCTGAAGAA
CACACCCGTCAAATCTTCAGAAGGATCTCAGCAAAGAGCCCATCATATCCAGTGACTCCACAACCATG
TTCACCATAGAGGGCATGCATTGTAATCGTGTGTGTTCCAATATTGAAAGTGCTTTATCTACACTCCAG
ATGTAAGCAGTATAGTAGTTTCTTAGAGAATAGGTGAGCCATTGTAAGTACAATGCAAGCTTAGTCAC
TCCAGAAATGCTGAGAAAAGGCAATAGAGGCCATTTACCAGGGCAATACAGAGTTAGTATTGCAAGTGAA
GTTGAAAGTACCGCCAGCTCTCCCTCCAGCTCATCTCTCAGAAGATGCCTTTGAACATAGTTAGCCAGC
CTCTGACCCAAGAAGCTGTGATAAACATAAAATGGCATGACTTGTAAATCTTGTGTGACGTCTATAGAGGG
TGTAATATCAAAAAAGCCAGGTGTAATAATCCATCCACGTGCCCTCGCAAACAGCACAGGGACTATTGAA
TTTGATCTCTACTAACCTCTCCAGAAACCTTGCAGAGAAGCAATTGAAGACATGGGATTTGATGCTGCCT
TGCCAGCAGACATGAAAGAGCCACTGGTAGTGATAGCTCAGCCCTCACTGGAAACACCTCTTTGCCCTC
AAGTAATGAGCCAGAAAATGTGATGACGTCAGTTCAGAACAGTGTACATACAGGTCTCTGGGATGACC



[View online »](#)

TGTGCTTCTTGTGTAGCAAACATTGAACGCAATTTAAGACGAGAAGAAGGAATATATTCTGTACTTGTTG
CCCTAATGGCTGGCAAGGCAGAAGTAAGATATAACCCAGCTGTTATCCAACCCCGAGTGATAGCAGAGTT
TATTCGAGAGCTTGGATTTGGAGCTATGGTGATGGAAAACGCTGGGGAAGGCAACGGCATCTTGAACTT
GTTGTGAGAGGAATGACGTGTGCTTCTGTGTCCATAAAATTGAATCAACACTCACAAAACAAAAGGGA
TCTTCTACTGCTCTGTGGCCCTGGCAACTAACAAAGCACATATTAATATGATCCAGAAATATTGGTCC
CAGAGATATTATCCATACCATCGGAAGCTTAGGCTTTGAAGCTTCTTTGGTCAAGAAAGATCGATCAGCC
AACCACTTAGATCATAAACGAGAAATAAAACAATGGAGAGGGTCTTTCCTTGTGAGCCTTTTTCTGTGA
TCCTGTAAATGGGACTGATGGTCTATATGATGGTTATGGATCACACCTTGAACACTTCCACCATAAATCA
GAACATGAGTAATGAAGAAATGATCAACATGCATTCTGTATGTTTCTGGAGCGTCAGATCCTGCCAGGA
CTGTCCATTATGAATTTGTTGTCCCTTTTATTGTGTCTACCTGTACAGTTTTGTGGCGGCTGGTACTTCT
ACATTCAGGCTTACAAAGCACTGAAGCATAAGACAGCAAACATGGATGTGCTGATTGTGCTGGCAACCAC
CATCGATTTGCCTACTCTCTGGTTATTCTTCTGGTTGCAATGTTTGTGAGAGCCAAAGTGAACCCCAT
ACCTTCTTTGATACACCTCCTATGCTGTTTGTGTTTATCGCACTAGGACGATGGCTGGAACATATAGCGA
AGGGCAAAACCTCCGAGGCTCTTCAAAGCTAATTTTATTACAAGCAACTGAAGCCACTATTGTAACCTCT
GAACTCTGAAAATCTCCTCCTGAGTGAAGAACAAGTGGATGTGGAACCTGTACAACGTGGAGATATCATT
AAGGTTGTTCCAGGAGGCAAAATTTCCAGTGGATGGCCGTGTTATTGAAGGACATTCATGGTGGACGAGT
CCCTCATCACAGGGGAGGCAATGCCTGTGGCTAAGAAAACCTGGCAGCACGGTGATTGCAGGTTCCATTAA
CCAGAATGGATCTCTCCTCATCCGAGCAACACATGTGGGAGCAGATACAACCCCTTCTCAGATCGTCAAA
CTTGTGGAGGAGGCACAGACATCAAAGGCTCCTATCCAGCAGTTTGCAGACAAACTCAGTGGCTACTTTG
TTCCTTTCATCGTCTTGGTTTCCATTGTTACCCTCTTGGTGTGGATTATAATTGGATTTCAAATTTTGA
AATTGTGGAACCTACTTTCCCGCTATAATAGAAGCATCTCCGAACAGAAACCATAATACGCTTTGCT
TTCAAAGCCTCTATCACGGTCTGTGTATCGCATGTCCCTGTTCACTGGGACTAGCCACTCCAACGTCTG
TGATGGTGGGCACAGGAGTAGGTGCTCAGAATGGCATACTTATCAAAGGTGGGAGCCACTGGAATGGC
TCATAAGGTAAAGGTAGTGGTATTTGATAAGACTGGAACCATCACCCATGGAACCCAGTAGTGAATCAA
GTGAAGGTTCTCGTGGAAAGTAACAAGATACACGCAATAAGATCCTGGCCATTGTGGGACTGCAGAAA
GTAACAGTGAACATCCTTTAGGAGCAGCTGAACCAAATATTGCAAAAAGGAGCTGGACTGAAACCCCT
GGGTACCTGTACAGATTTCCAGGTTGTACCAGGCTGTGGTATTAGCTGTAAGTCAACCAATATTGAAGGT
TTGCTACATAAGAGTAACCTGAAGATAGAAGAAAATAACATTAATAATGCATCCCTGGTTCAAATGATG
CAATTAATGAACAGTCATCAACTTCATCTTCTATGATCATTGATGCTCATCTCTCAAATGCTGTTAATAC
TCAGCAGTACAAAGTCTCATTGGTAACCGGGAATGGATGATTAGAAATGGTCTTGTGATAAGTAATGAT
GTAGATGAATCTATGATTGAACATGAAAGAAGAGGTCGGACTGCTGTCTTGGTGACAATCGATGATGAGC
TGTGTGGCTTGATTGCTATTGCTGATACTGTGAAACCTGAGGCCGAGTTGGCTGTACACATTCCTGAAATC
TATGGGTTTAGAAGTAGTCTGATGACTGGAGACAACAGTAAAACCTGCTCAGTCTATTGCTTCTCAGGTT
GGCATTACTAAGGTGTTTGTGAAAGTCTACCTTCCCACAAAGTTGCTAAGGTGAAGCAGCTCCAAGAGG
AGGGCAACCGTGTAGCAATGGTAGGAGATGGAATCAATGACTCCCCAGCTCTGGCAATGGCAAACGTTGG
AATTGCCATAGGCACAGGCACAGATGTAGCCATTGAAGCAGCTGATGTGGTTTTGATAAGGAATGACCTT
CTGGATGTTGTGGCAAGTATTGACTTGTCAAGGAAAACAGTCAAGAGGATTGCAATCAATTTTGTCTTTG
CTCTAATTTATAATCTGGTTGGAATCCCATCGCTGCTGGAGTTTTCTGCCATCGGTTTGGTTTTACA
ACCCTGGATGGGATCCGCAGCAATGGCCGCTTCTGTCTCTGTAGTCCCTTTCTCCCTTTTCTCAAG
CTTTACAGGAAACCTACGTATGACAATTATGAGTTGCATCCCCGAGCCACACAGGACAGAGGAGTCTT
CAGAAATCAGTGTTCACGTTGGAATAGATGACACCTCAAGAAAATCTCCAAGGCTGGGTTTGTGACC
GATTGTCAACTATAGCAGAGCCTCCATAAATTCAGTGTCTGTGACAAGCGCTCCCTGAACAGCGTTGTT
ACTAGTGAACCTGACAAGCACTCGCTTCTGGTGGGCGACTTCCGGGAAGATGATGACACCACACTG

ACGCGTACGCGGCCGCTCGAG - GFP Tag - GTTTAA

Protein Sequence: >MG225903 representing NM_009726
 Red=Cloning site Green=Tags(s)

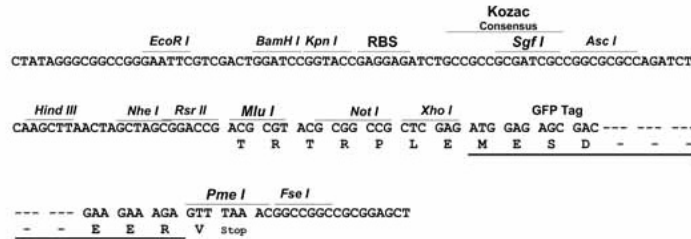
MEPSVDANSITITVEGMCISCVRTIEQQIGKVNQVHHIKVSLEEKSAIIYDPKLTQPKTLQEAIDDMG
 FDALLHNANPLPVL TNTVFL TVTAPL TLPWDHIQSTLLKTKGVTGVKISPQORSVVVTIIPSVVSASQIV
 ELVPDL SLDMGTEKKS GACEEHS TPQAGEVMLKMKVEGMC HSCSTSTIEGKVGKLGQVQRIKVS LNDQE
 ATIVFQPHLITAEIEIKQIEAVGFPAF IKKQPKYLKLG AIDVERLKNTPVKSSEGSQQKSPSYSDSTTM
 FTIEGMHCKSCVSNIESALSTLQYVSSIVV SLENRS AIVKYNASLVTP EMLRKAIEAISPQYRVSIASE
 VESTASSPSSSLQK MPLNIVSQPLTQEAVININGMTCNSCVQSIEGVI SKKPGVKSIHVSLANSTG TIE
 FDPLLTSPETLREAIEDMGFDAALPADMKEPLV VVIAQPSLETPLLPSSNEPENVM TSVQNKCYIQVSGMT
 CASCVANIERNLRREEGIY SVLVALMAGKAEVRYNPAVIQPRVIAEF IRELGFGAMVMENAGEGNGILEL
 VVRGMTASCVHKIESTLTKHKGIFYCSVALATNKAHIKYDPEIIGPRDIHTIGSLGFEASLVKKDRSA
 NHLDHKREIKQWRGSFLVSLFFCIPVMGLMVYMMVMDHHLATLHHNQNSNEEMINMHSAMFLERQILPG
 LSIMNLLSLLLCLPVQFCGGWYFYIQA YKALKHKTANMDVLIVLATTIAFAYSLVILLVAMFERAKVNP I
 TFFDTPPMLFVFIALGRWLEHI AKGKTSEALAKLISLQATEATIVTLNSENLLLSEEQVDVELVQRGDII
 KVVPGGKFPVDGRVIEGHSMVDESLITGEAMPVAKKPGSTVIAGSINQNGSLLIRATHV GADTTL SQIVK
 LVEEAQTSKAPIQQFADKLSGYFVPFIVLVSIVTLLVWIIIGFQNF EIVETYFPGYNRSISR TETIIRFA
 FQASITVLCIACPCSLGLATPTAVMVGTVGAQNGILIKGGEPL EMAHKV VVVVDKGTGTITHGTPVNVQ
 VKVLVESNKISRNKILAI VGTAEASNSEHPLGAAVTKYCKKELDTETLGTCTDFQVVPGCCISCKVTNIEG
 LLHKS NLKIEENNIKNASLVQID AINEQSSTSSSMIIDAHL SNAVNTQQYKVLIGNREWMIRNGLVISND
 VDESMIEHERRGRTAVLVTIDDEL CGLIAIADTVKPEAELAVHILKSMGLEVVLMTGDNSKTAQSIASQV
 GITKVF AEVLP SHKVAKVKQLQE EGKRVAMVGDGINDSPALAMANV G IAGTGTDAIEAADVLLIRNDL
 LDVVASIDL SRKTVKRIRINFV FAL IYNLVGIPIAAGVFLPIGLVLQPW MGSAA MAASSVSVL SSSLFLK
 LYRKPTYDNYELHPRSHTGQRSPSEISVHV GIDDTSRNSPRLGLLDRI VNYSRASINLLSDKRSLNSV
 TSEPDKHSLLVGFREDDDTTL

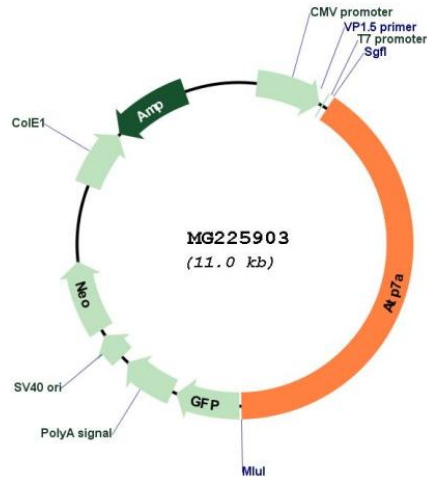
TRTRPLE - GFP Tag - V

Restriction Sites: SgfI-MluI

Cloning Scheme:

Cloning sites used for ORF Shutting:



Plasmid Map:


ACCN: NM_009726

ORF Size: 4473 bp

OTI Disclaimer: The molecular sequence of this clone aligns with the gene accession number as a point of reference only. However, individual transcript sequences of the same gene can differ through naturally occurring variations (e.g. polymorphisms), each with its own valid existence. This clone is substantially in agreement with the reference, but a complete review of all prevailing variants is recommended prior to use. [More info](#)

OTI Annotation: This clone was engineered to express the complete ORF with an expression tag. Expression varies depending on the nature of the gene.

Components: The ORF clone is ion-exchange column purified and shipped in a 2D barcoded Matrix tube containing 10ug of transfection-ready, dried plasmid DNA (reconstitute with 100 ul of water).

Reconstitution Method:

1. Centrifuge at 5,000xg for 5min.
2. Carefully open the tube and add 100ul of sterile water to dissolve the DNA.
3. Close the tube and incubate for 10 minutes at room temperature.
4. Briefly vortex the tube and then do a quick spin (less than 5000xg) to concentrate the liquid at the bottom.
5. Store the suspended plasmid at -20°C. The DNA is stable for at least one year from date of shipping when stored at -20°C.

RefSeq: [NM_009726.4](#)

RefSeq Size: 8143 bp

RefSeq ORF: 4476 bp

Locus ID: 11977

UniProt ID: [Q64430](#)

Cytogenetics: X 47.36 cM

Gene Summary: May supply copper to copper-requiring proteins within the secretory pathway, when localized in the trans-Golgi network. Under conditions of elevated extracellular copper, it relocated to the plasma membrane where it functions in the efflux of copper from cells (By similarity).
[UniProtKB/Swiss-Prot Function]