

Product datasheet for **MG225898**

Map2k3 (NM_008928) Mouse Tagged ORF Clone

Product data:

Product Type:	Expression Plasmids
Product Name:	Map2k3 (NM_008928) Mouse Tagged ORF Clone
Tag:	TurboGFP
Symbol:	Map2k3
Synonyms:	AW212142; MEK3; MKK3; mMKK3b; Prkmk3
Mammalian Cell Selection:	Neomycin
Vector:	pCMV6-AC-GFP (PS100010)
E. coli Selection:	Ampicillin (100 ug/mL)
ORF Nucleotide Sequence:	>MG225898 representing NM_008928 Red=Cloning site Blue=ORF Green=Tags(s)

TTTTGTAATACGACTCACTATAGGGCGGCCGGAATTCGTCGACTGGATCCGGTACCGAGGAGATCTGCC
GCC**CGATCGCC**

ATGGAGTCGCCCCGCCGAGCCCCGCCGAGCTTGCCTCAGACCAAAGGAAAAATCCAAAAGGAAAAAGG
ACTTACGGATATCCTGCGTGTCCAAGCCACCTGTGTCCAACCCACACCCCCCGAACCTGGACTCCC
GACCTTCATCACTATCGGAGACAGAACTTCGAAGTGGAGGCTGATGACTTGGTGACCATCTCAGAGCTG
GGTCGTGGAGCCTATGGGGTGTAGAGAAAGTGGGCATGCTCAGAGTGGTACCATCATGGCTGTCAAGC
GCATCCGGGCCACAGTGAACACACAGGAGCAGAAACGTCTGCTTATGGACCTAGACATCAACATGCGCAC
GGTCGACTGCTTCTACACTGTCACCTTCTATGGTGCCCTTTCAGAGAGGGGGATGTATGGATCTGCATG
GAGCTCATGGACACTTCCCTGGATAAGTTCTACCGGAAGGTGCTGGAGAAGAATGAAAATCCGGAAG
ACATCCTGGGGGAGATCGCTGTGTCTATCGTGCGGGCCCTGGAGCACCTGCATAGCAAGCTGTCTGTGAT
CCACAGAGATGTGAAGCCATCCAATGTCCTCATCAACAAGGAAGGGCATGTGAAGATGTGCGACTTTGGC
ATCAGTGGCTACCTGGTGGACTCTGTGGCAAAGACAATGGATGCTGGCTGCAAGCCTTACATGGCCCTG
AGAGGATCAACCCTGAAGTGAATCAGAAGGGCTACAATGTCAAGTCTGATGTCTGGAGCCTCGGCATCAC
CATGATCGAGATGGCCATTCTGCGATTCCCTTATGAGTCTTGGGGCACACCGTTCCAGCAGCTGAAGCAG
GTGGTGGAGGAGCCATCCCCACAGCTCCCAGCGGACCAGTCTCCCCTGAGTTTGTGGACTCACTAGCC
AGTGCCTAAGGAAGAACCCTGCAGAGCGCATGAGCTACCTGGAGCTGATGGAACACCCATTCTTCACCTT
GCACAAAATAAGAAGACAGACATTGCTGCCTTTGTGAAGGAGATCCTGGGAGAGGATTCA

ACGCGTACGCGGCCGCTCGAG - GFP Tag - GTTTAA



[View online »](#)

Protein Sequence: >MG225898 representing NM_008928
 Red=Cloning site Green=Tags(s)

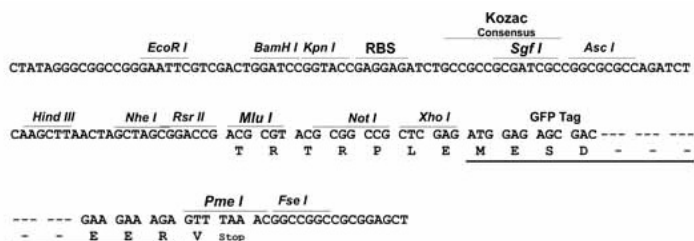
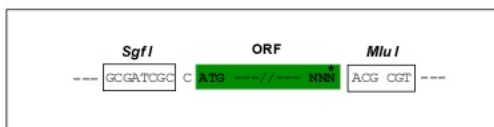
```
MESPAASPPASLPQTKGKSKRKKDLRISCVSKPPVSNPTPPRNLDSTRFITIGDRNFEVEADDLVTISEL
GRGAYGVVEKVRHAQSGTIMAVKRIRATVNTQEQRLLMDLDINMRTVD CFYTVTFYGALFREGDVWICM
ELMDTSLDKFYRKVLEKNMKIPEDILGEIAVSIVRALEHLHSLKLSVIHRDVKPSNVLINKEGHVKMCDFG
ISGYLVDSVAKTMDAGCKPYMAPERINPELNQKGYNVKSDVWSLGITMIEMAILRFPYESWGTPFQQLKQ
VVEEPSQLPADQFSPEFVDFTSQCLRKNPAERMSYLELMEHPFFTLHKTKKTDIAAFVKEILGEDS
```

TRTRPLE - GFP Tag - V

Restriction Sites: SgfI-MluI

Cloning Scheme:

Cloning sites used for ORF Shuttling:



ACCN: NM_008928

ORF Size: 1041 bp

OTI Disclaimer: The molecular sequence of this clone aligns with the gene accession number as a point of reference only. However, individual transcript sequences of the same gene can differ through naturally occurring variations (e.g. polymorphisms), each with its own valid existence. This clone is substantially in agreement with the reference, but a complete review of all prevailing variants is recommended prior to use. [More info](#)

OTI Annotation: This clone was engineered to express the complete ORF with an expression tag. Expression varies depending on the nature of the gene.

Components: The ORF clone is ion-exchange column purified and shipped in a 2D barcoded Matrix tube containing 10ug of transfection-ready, dried plasmid DNA (reconstitute with 100 ul of water).

Reconstitution Method:

1. Centrifuge at 5,000xg for 5min.
2. Carefully open the tube and add 100ul of sterile water to dissolve the DNA.
3. Close the tube and incubate for 10 minutes at room temperature.
4. Briefly vortex the tube and then do a quick spin (less than 5000xg) to concentrate the liquid at the bottom.
5. Store the suspended plasmid at -20°C. The DNA is stable for at least one year from date of shipping when stored at -20°C.

RefSeq: [NM_008928.5](#)

RefSeq Size: 2166 bp

RefSeq ORF: 1044 bp

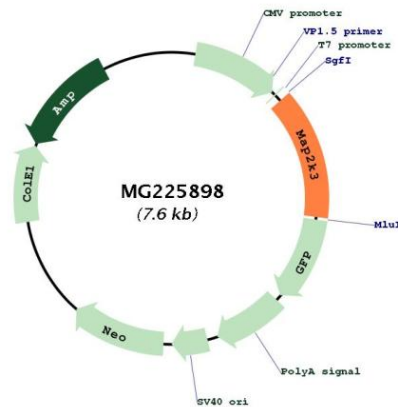
Locus ID: 26397

UniProt ID: [O09110](#)

Cytogenetics: 11 B2

Gene Summary: Dual specificity kinase. Is activated by cytokines and environmental stress in vivo. Catalyzes the concomitant phosphorylation of a threonine and a tyrosine residue in the MAP kinase p38. Part of a signaling cascade that begins with the activation of the adrenergic receptor ADRA1B and leads to the activation of MAPK14.[UniProtKB/Swiss-Prot Function]

Product images:



Circular map for MG225898