

Product datasheet for **MG225896**

Gnb1 (NM_001160016) Mouse Tagged ORF Clone

Product data:

Product Type:	Expression Plasmids
Product Name:	Gnb1 (NM_001160016) Mouse Tagged ORF Clone
Tag:	TurboGFP
Symbol:	Gnb1
Synonyms:	AA409223; C77571; Gnb-1
Mammalian Cell Selection:	Neomycin
Vector:	pCMV6-AC-GFP (PS100010)
E. coli Selection:	Ampicillin (100 ug/mL)
ORF Nucleotide Sequence:	>MG225896 representing NM_001160016 Red=Cloning site Blue=ORF Green=Tags(s)

TTTTGTAATACGACTCACTATAGGGCGGCCGGAATTCGTCGACTGGATCCGGTACCGAGGAGATCTGCC
GCC**CGATCGCC**

ATGAGTGAACCTTGACCAGCTGCGGCAGGAGGCCGAGCAACTGAAGAACCAAATTAGAGATGCTCGTAAAG
CGTGTGCCGATGCGACTCTTTCTCAGATCACAACAATATTGATCCAGTGGGAAGAATCCAAATGCGGAC
CAGGAGAACACTGAGGGGCATCTGGCAAAGATTTATGCCATGCACTGGGGCACAGACTCAAGGCTCCTT
GTCAGCGCCTCTCAGGATGGAAAACATCATCTGGGACAGTTATACCACAAACAAGGTTTCATGCCATCC
CTCTGCGCTCCTTGGGTCATGACCTGCGCATACGCTCCTTCTGGGAATTATGTGCCTGTGGTGGCCT
GGATAACATCTGCTCCATTTACAACCTGAAAACCTCGTGAAGGGAATGTGCGTGTGAGTCGTGAGCTGGCG
GGACACACAGGTTATCTGTCTGTTGCCGTTCCCTGGATGACAATCAGATAGTTACCAGTTCTGGAGACA
CCACATGTGCCCTGTGGGACATCGAGACTGGCCAGCAGACAACCACATTTACTGGACACACTGGAGATGT
CATGAGCCTGTCTTGTCTGCTGACACCAGACTGTTTGTCTCTGGTGTGTGATGCTTCAGCCAAGCTC
TGGGATGTCCGAGAAGGGATGTGCCGCGCAGACCTTTACAGGACACGAGTCTGACATCAATGCCATATGTT
TCTTTCCCAATGGCAATGCCTTTGCCACTGGCTCAGACGATGCCACATGCAGGCTGTTTGACCTCCGTGC
AGACCAGGAGCTCATGACCTACTCCCATGACAACATTATCTGTGGTATCATATCTGTTTCTTCTCCAAG
AGTGGCCGCTCCTCCTTGTGGGTATGATGACTTCAACTGTAATGTCTGGGATGCACTCAAAGCTGACA
GAGCAGGTGTCTTAGCTGGACACGACAACCGAGTCAGCTGTTGGGGTGACTGATGATGGCATGGCTGT
GGCAACAGGGTCTGGGACAGCTTCTCAAGATCTGGAAC

ACGCGTACGCGGCCGCTCGAG - GFP Tag - GTTTAA



[View online »](#)

Protein Sequence: >MG225896 representing NM_001160016
 Red=Cloning site Green=Tags(s)

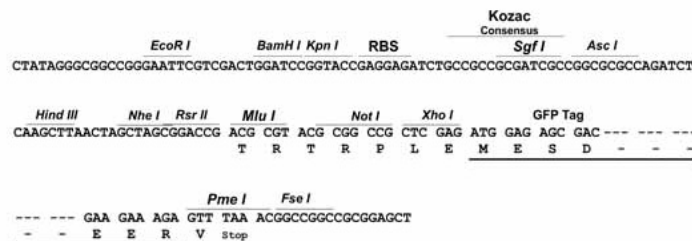
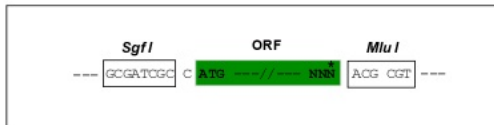
MSELDQLRQEAQLKNQIRDARKACADATLSQITNNIDPVGRIQMRTRRTLGRHLAKIYAMHWGTD S RLL
 VSASQDGKLI IWDSYTTNKVHAIPLRSSWVMTCA YAPSGNYVACGGLDNICSIYNLKTREGNVRV S RELA
 GHTGYLSCCRFLDDNQIVTSSGDTTCALWDIETGQQTTF TGTGDVMSLSLAPDTRLFVSGACDASAKL
 WDVREGMCRQTF TGHESDINAICFFPNGNAFATGSDDATCRLFDLRADQELMTYSHDNIICGITSVSFSK
 SGRLLLAGYDDFNCNVWDALKADRAGVLAGHDNRV SCLGVTDDGMAVATGSWDSFLKIWN

TRTRPLE - GFP Tag - V

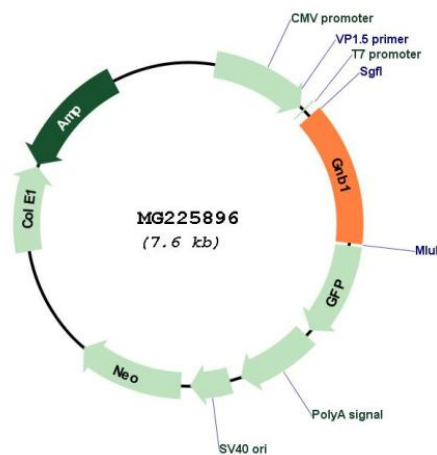
Restriction Sites: SgfI-MluI

Cloning Scheme:

Cloning sites used for ORF Shuttling:



Plasmid Map:



ACCN: NM_001160016

ORF Size: 1020 bp

OTI Disclaimer:	The molecular sequence of this clone aligns with the gene accession number as a point of reference only. However, individual transcript sequences of the same gene can differ through naturally occurring variations (e.g. polymorphisms), each with its own valid existence. This clone is substantially in agreement with the reference, but a complete review of all prevailing variants is recommended prior to use. More info
OTI Annotation:	This clone was engineered to express the complete ORF with an expression tag. Expression varies depending on the nature of the gene.
Components:	The ORF clone is ion-exchange column purified and shipped in a 2D barcoded Matrix tube containing 10ug of transfection-ready, dried plasmid DNA (reconstitute with 100 ul of water).
Reconstitution Method:	<ol style="list-style-type: none">1. Centrifuge at 5,000xg for 5min.2. Carefully open the tube and add 100ul of sterile water to dissolve the DNA.3. Close the tube and incubate for 10 minutes at room temperature.4. Briefly vortex the tube and then do a quick spin (less than 5000xg) to concentrate the liquid at the bottom.5. Store the suspended plasmid at -20°C. The DNA is stable for at least one year from date of shipping when stored at -20°C.
RefSeq:	NM_001160016.1 , NP_001153488.1
RefSeq Size:	3140 bp
RefSeq ORF:	1023 bp
Locus ID:	14688
UniProt ID:	P62874
Cytogenetics:	4 86.17 cM
Gene Summary:	Guanine nucleotide-binding proteins (G proteins) are involved as a modulator or transducer in various transmembrane signaling systems. The beta and gamma chains are required for the GTPase activity, for replacement of GDP by GTP, and for G protein-effector interaction (By similarity).[UniProtKB/Swiss-Prot Function]