

Product datasheet for **MG225871**

Keap1 (NM_001110306) Mouse Tagged ORF Clone

Product data:

Product Type:	Expression Plasmids
Product Name:	Keap1 (NM_001110306) Mouse Tagged ORF Clone
Tag:	TurboGFP
Symbol:	Keap1
Synonyms:	INRF2; mKIAA0132
Mammalian Cell Selection:	Neomycin
Vector:	pCMV6-AC-GFP (PS100010)
E. coli Selection:	Ampicillin (100 ug/mL)



[View online »](#)

ORF Nucleotide Sequence:

>MG225871 representing NM_001110306
 Red=Cloning site Blue=ORF Green=Tags(s)

TTTTGTAATACGACTCACTATAGGGCGGCCGGAATTCGTCGACTGGATCCGGTACCGAGGAGATCTGCC
 GCC**CGGATCGCC**

ATGCAGCCGAACCCAAGCTTAGCGGGCTCCCGCAGCAGCCAGTTCTGCCCTGTGGTCAAAGTGCC
 CCGAGGGGGCCGGGACGCAGTGATGTATGCCTCCACGGAGTGAAGGCAGAGGTGACGCCCTCGCAGGA
 CCGTAACCGAACCTTCAGCTACACACTAGAGGATCACACCAAGCAGGCTTTTGGCGTCATGAACGAGCTT
 CGCCTGAGCCAGCAACTCTGTGACGTGACCCTGCAGGTCAAATATGAGGACATCCCAGCTGCCAAATTCA
 TGGCTCACAAAGTGGTGTGGCTCCTCCAGCCAGTCTTTAAAGCCATGTTACCAACGGGCTTCGGGA
 GCAGGGCATGGAGGTGGTGTCCATCGAAGGCATCCACCCTAAGGTCATGGAAAGGCTTATTGAGTTCGCC
 TACACGGCTCCATCTCCGTGGGCGAGAAGTGTGTCTGCACGTGATGAACGGGGCGGTGATGTACCAGA
 TTGACAGCGTGGTTCGAGCTGCAGCGACTTCTCGTGCAGCAGTGGACCCAGCAACGCCATTGGCAT
 CGCCAACCTTCGCGGAGCAGATCGGCTGCACTGAACTGCACCAGCGTGCCCGGAGTATATCTACATGCAC
 TTCGGGGAGGTGGCAAGCAGGAGGAGTTCTTCAACCTGTCACACTGCCAGCTGGCCACGCTCATCAGCC
 GGGATGATCTGAACGTACGCTGCGAGTCCGAGGTGTTCCACGCGTGCATCGACTGGGTCAAATACGACTG
 CCCGCAGCGCGCTTCTACGTGCAGGCACTGCTGCGGGCCGTGCGCTGCCATGCGCTCACGCCGCGCTTC
 CTGCAGACACAGCTGCAGAAAGTGTGAGATCCTGCAGGCCGACGCGCGCTGCAAGGACTACCTGGTGCAGA
 TATTCAGGAGCTCACGCTGCACAAGCCACGCAGGCACTGCCCTGCCGCGCGCCAAAGTGGGCCGCT
 CATCTACACAGCGGGCGGTTACTCCGACAGTCGCTCAGTACCTGGAGGCTACAACCCGAGCAATGGC
 TCCTGGCTGCGCTGGCCGATCTACAGGTGCCGCGCAGTGGGCTGGCAGGCTGCGTGGTGGTGGCTGC
 TATACGCTGTGGGCGGCCGAACAACTCTCCGGATGGCAACACTGACTCCAGCGCCCTGGACTGTACAA
 CCCATGACCAACCAGTGGTCCGCTGTGCTCTATGAGCGTGCCACGCAACCGCATCGGGTGGGGGTC
 ATAGATGGCCACATCTACGCACTCGGGGTTCCACGGTGCATCCACCACAGCAGCGTGGAGAGATATG
 AGCCAGAGCGGGACGAGTGGCATCTAGTCGCGCAATGTTGACACGGAGGATTGGCGTGGGCGTGGCAGT
 GCTCAACCGCTTGTGTATGCAGTGGGGGCTTTGACGGGACTAACCGGCTTAACCCGAGAATGTTAC
 TATCCAGAGGAATGAGTGGCGGATGATCACACCGATGAATACCATCCGAGCGGGGCCGGGCTGCGG
 TGCTGCACAAGTGTATCTATGCAGCAGGGGCTACGATGGCAGGACCAGTTGAACAGTGTGGAGCGCTA
 CGAGTGGAGACAGAGACCTGGACTTTCGTAGCCCCATGAGGCATCACCGTAGTGGCTGGGATTACT
 GTGCACCAGGGCAAGATCTACGTCCTCGGAGGCTATGATGGCCACTTTCTGGACAGTGTGGAATGCT
 ATGACCCGGACAGTATACCTGGAGTGAAGTGACCCGATGACATCTGGCCGACGCGGGTGGGTGTGGC
 CGTCACCATGGAACCCTGTCCGAAGCAAATTGATCAACAAAACGTACCTGC

AG**CGGACCG**ACGCGTACGCGGCCGCTCGAG - GFP Tag - GTTTAA

Protein Sequence:

>MG225871 representing NM_001110306
 Red=Cloning site Green=Tags(s)

MQPEPKLSGAPRSSQFLPLWSKCEGAGDAVMYASTECKAEVTPSQDGNRTFSYTLLEDHTKQAFGVMNEL
 RLSQQLCDVTLQVKYEDIPAAQFMAHKVVLASSPVFKAMFTNGLREQGMEVVSIEGIHPKVMERLIEFA
 YTASISVGEKCVLHMNGAVMYQIDSVVRACSDFLVQQLDPSNAIGIANFAEQIGCTELHQRAREYIYMH
 FGEVAKQEELFNL SHCQLATLISRDDLNVRCSEVVFHACIDWVKYDCPQRRFYVQALLRAVRCHALTPRF
 LQTQLQKCEILQADARCKDYL VQIFQEL TLHKPTQAVPCRAPKVGRLIYTAGGYFRQSLSYLEAYNPSNG
 SWLRLADLQVPRSLAGCVVGGLLYAVGGRNNSPDGNTDSSALDCYNPMTNQWSPCASMSVPRNRIGVGV
 IDGHIYAVGGSHGCIHSSVERYEPERDEWHLVAPMLTRRIGVGVAVLNRLLYAVGGFDGTRNLNSAECY
 YPERNEWRMITPMNTIRSGAGVCVLHNCIYAAGGYDGDQQLNSVERYDVETETWTFVAPMRHRSALGIT
 VHQKGIYVLGGYDGHFTFLDSVECYDPSDWTSEVTRMTSGRSGVGVAVTMEPCRKQIDQQNCTC

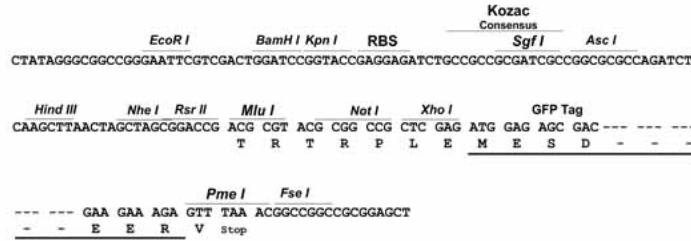
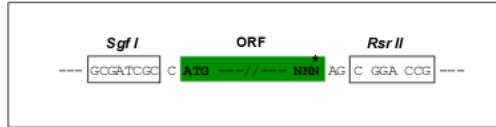
SGP**TRRRLE** - GFP Tag - V

Restriction Sites:

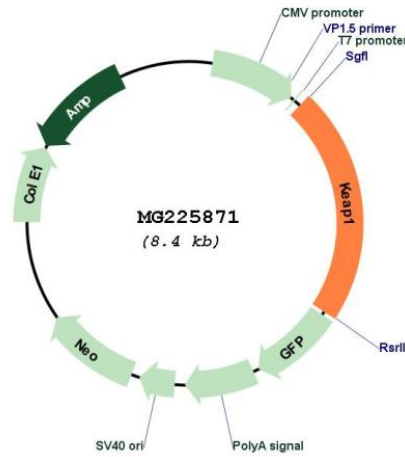
Sgfl-RsrII

Cloning Scheme:

Cloning sites used for ORF Shuttling:



Plasmid Map:



ACCN: NM_001110306
 ORF Size: 1872 bp

OTI Disclaimer:	The molecular sequence of this clone aligns with the gene accession number as a point of reference only. However, individual transcript sequences of the same gene can differ through naturally occurring variations (e.g. polymorphisms), each with its own valid existence. This clone is substantially in agreement with the reference, but a complete review of all prevailing variants is recommended prior to use. More info
OTI Annotation:	This clone was engineered to express the complete ORF with an expression tag. Expression varies depending on the nature of the gene.
Components:	The ORF clone is ion-exchange column purified and shipped in a 2D barcoded Matrix tube containing 10ug of transfection-ready, dried plasmid DNA (reconstitute with 100 ul of water).
Reconstitution Method:	<ol style="list-style-type: none">1. Centrifuge at 5,000xg for 5min.2. Carefully open the tube and add 100ul of sterile water to dissolve the DNA.3. Close the tube and incubate for 10 minutes at room temperature.4. Briefly vortex the tube and then do a quick spin (less than 5000xg) to concentrate the liquid at the bottom.5. Store the suspended plasmid at -20°C. The DNA is stable for at least one year from date of shipping when stored at -20°C.
RefSeq:	NM_001110306.1 , NP_001103776.1
RefSeq Size:	3319 bp
RefSeq ORF:	1875 bp
Locus ID:	50868
UniProt ID:	Q9Z2X8
Cytogenetics:	9 A3
Gene Summary:	Acts as a substrate adapter protein for the E3 ubiquitin ligase complex formed by CUL3 and RBX1 and targets NFE2L2/NRF2 for ubiquitination and degradation by the proteasome, thus resulting in the suppression of its transcriptional activity and the repression of antioxidant response element-mediated detoxifying enzyme gene expression. Retains NFE2L2/NRF2 and may also retain BPTF in the cytosol. Targets PGAM5 for ubiquitination and degradation by the proteasome (By similarity).[UniProtKB/Swiss-Prot Function]