

Product datasheet for **MG225867**

Keap1 (NM_001110305) Mouse Tagged ORF Clone

Product data:

Product Type:	Expression Plasmids
Product Name:	Keap1 (NM_001110305) Mouse Tagged ORF Clone
Tag:	TurboGFP
Symbol:	Keap1
Synonyms:	INRF2; mKIAA0132
Mammalian Cell Selection:	Neomycin
Vector:	pCMV6-AC-GFP (PS100010)
E. coli Selection:	Ampicillin (100 ug/mL)



[View online »](#)

ORF Nucleotide Sequence:

>MG225867 representing NM_001110305
 Red=Cloning site Blue=ORF Green=Tags(s)

TTTTGTAATACGACTCACTATAGGGCGGCCGGAATTCGTCGACTGGATCCGGTACCGAGGAGATCTGCC
 GCC**CGGATCGCC**

ATGCAGCCGAACCCAAGCTTAGCGGGGCTCCCGCAGCAGCCAGTTCTGCCCTGTGGTCAAAGTGCC
 CCGAGGGGGCCGGGACGCAGTGATGTATGCCTCCACGGAGTGAAGGCAGAGGTGACGCCCTCGCAGGA
 CCGTAACCGAACCTTCAGCTACACACTAGAGGATCACACCAAGCAGGCTTTTGGCGTCATGAACGAGCTT
 CGCCTGAGCCAGCAACTCTGTGACGTGACCCTGCAGGTCAAATATGAGGACATCCCAGCTGCCAAATTCA
 TGGCTCACAAAGTGGTGTGGCCCTCCAGCCAGTCTTTAAAGCCATGTTACCAACGGGCTTCGGGA
 GCAGGGCATGGAGGTGGTGTCCATCGAAGGCATCCACCCTAAGGTCATGGAAAGGCTTATTGAGTTCGCC
 TACACGGCTCCATCTCCGTGGGCGAGAAGTGTGTCTGCACGTGATGAACGGGGCGGTCATGTACCAGA
 TTGACAGCGTGGTTCGAGCTGCAGCGACTTCTCGTGCACGTGATGAACGGGGCGGTCATGTACCAGA
 CGCAACTTCGCGGAGCAGATCGGCTGCACTGAACTGCACCAGCGTGCCCGGAGTATATCTACATGCAC
 TTCGGGGAGGTGGCAAGCAGGAGGAGTTCTTCAACCTGTCACACTGCCAGCTGGCCACGCTCATCAGCC
 GGGATGATCTGAACGTACGCTGCGAGTCCGAGGTGTTCCACGCGTGCATCGACTGGGTCAAATACGACTG
 CCCGCAGCGCGCTTCTACGTGCAGGCACTGCTGCGGGCCGTGCGCTGCCATGCGCTCACGCCGCGCTTC
 CTGCAGACACAGCTGCAGAAAGTGTGAGATCCTGCAGGCCGACGCGCGCTGCAAGGACTACCTGGTGCAGA
 TATTCAGGAGCTCACGTCACAAGCCACGCAGGCACTGCCCTGCCGCGCGCCAAAGTGGGCGCGCT
 CATCTACACAGCGGGCGGTTACTCCGACAGTCGCTCAGTACCTGGAGGCTACAACCCGAGCAATGGC
 TCCTGGCTGCGCTGGCCGATCTACAGGTGCCGCGCAGTGGGCTGGCAGGCTGCGTGGTGGTGGGCTGC
 TATACGCTGTGGGCGGCCGAACAACTCCGGATGGCAACACTGACTCCAGCGCCCTGGACTGTACAA
 CCCATGACCAACCAGTGGTCCGCTGTGCTCTATGAGCGTGCCACGCAACCGCATCGGGTGGGGGTC
 ATAGATGGCCACATCTACGCACTCGGGGTTCCACGGTGCATCCACCACAGCAGCGTGGAGAGATATG
 AGCCAGAGCGGGACGAGTGGCATCTAGTCGCGCAATGTTGACACGGAGGATTGGCGTGGGCGTGGCAGT
 GCTCAACCGCTTGTGTATGCAGTGGGGGCTTTGACGGGACTAACCGGCTTAACCCGAGAATGTTAC
 TATCCAGAGGAATGAGTGGCGGATGATCACACCGATGAATACCATCCGAGCGGGGCCGGGCTGCGG
 TGCTGCACAAGTGTATCTATGCAGCAGGGGCTACGATGGCAGGACCAGTTGAACAGTGTGGAGCGCTA
 CGAGTGGAGACAGAGACCTGGACTTTCGTAGCCCCATGAGGCATCACCGTAGTGGCTGGGATTACT
 GTGCACCAGGGCAAGATCTACGTCCTCGGAGGCTATGATGGCCACTTTTCTGGACAGTGTGGAATGCT
 ATGACCCGGACAGTGATACCTGGAGTGAAGTGACCCGATGACATCTGGCCGACGCGGGTGGGTGTGGC
 CGTCCACATGGAACCCTGTCCGAAGCAAATTGATCAACAAAAGTGTACCTGC

AG**CGGACCG**ACGCGTACGCGGCCGCTCGAG - GFP Tag - GTTTAA

Protein Sequence:

>MG225867 representing NM_001110305
 Red=Cloning site Green=Tags(s)

MQPEPKLSGAPRSSQFLPLWSKCEGAGDAVMYASTECKAEVTPSQDGNRTFSYTLLEDHTKQAFGVMNEL
 RLSQQLCDVTLQVKYEDIPAAQFMAHKVVLASSPVPFKAMFTNGLREQGMEVVSIEGIHPKVMERLIEFA
 YTASISVGEKCVLHMNGAVMYQIDSVVRACSDFLVQQLDPSNAIGIANFAEQIGCTELHQRAREYIYMH
 FGEVAKQEFFFNLSHCQLATLISRDDLNVRCSEVVFHACIDWVKYDCPQRRFYVQALLRAVRCHALTPRF
 LQTQLQKCEILQADARCKDYLQVIFQELTLHKPTQAVPCRAPKVGRLIYTAGGYFRQSLSYLEAYNPSNG
 SWLRLADLQVPRSLAGCVVGGLLYAVGGRNNSPDGNTDSSALDCYNPMTNQWSPCASMSVPRNRIGVGV
 IDGHIYAVGGSHGCIHSSVERYEPERDEWHLVAPMLTRRIGVGVAVLNRLLYAVGGFDGTRNLNSAECY
 YPERNEWRMITPMNTIRSGAGVCVLHNCIYAAGGYDGDQQLNSVERYDVETETWTFVAPMRHRSALGIT
 VHQKGIYVLGGYDGHFTFLDSVECYDPSDWTWSEVTRMTSGRSGVGVAVTMEPCRKQIDQQNCTC

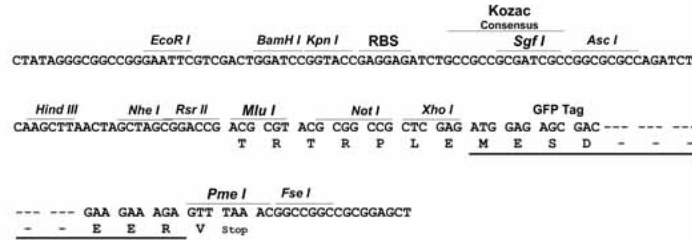
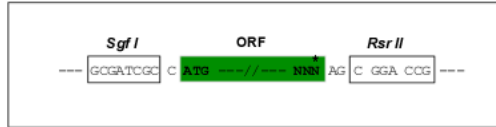
SGP**TRRRLE** - GFP Tag - V

Restriction Sites:

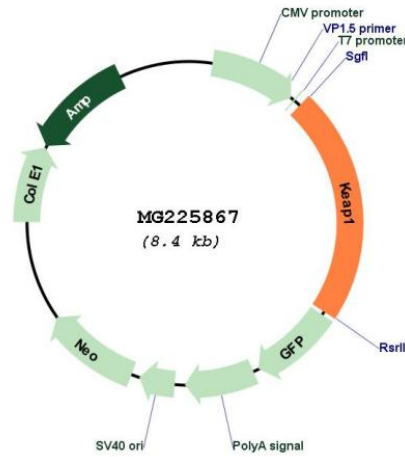
Sgfl-RsrII

Cloning Scheme:

Cloning sites used for ORF Shuttling:



Plasmid Map:



ACCN: NM_001110305
 ORF Size: 1872 bp

OTI Disclaimer:	<p>Due to the inherent nature of this plasmid, standard methods to replicate additional amounts of DNA in E. coli are highly likely to result in mutations and/or rearrangements. Therefore, OriGene does not guarantee the capability to replicate this plasmid DNA. Additional amounts of DNA can be purchased from OriGene with batch-specific, full-sequence verification at a reduced cost. Please contact our customer care team at custsupport@origene.com or by calling 301.340.3188 option 3 for pricing and delivery.</p> <p>The molecular sequence of this clone aligns with the gene accession number as a point of reference only. However, individual transcript sequences of the same gene can differ through naturally occurring variations (e.g. polymorphisms), each with its own valid existence. This clone is substantially in agreement with the reference, but a complete review of all prevailing variants is recommended prior to use. More info</p>
OTI Annotation:	This clone was engineered to express the complete ORF with an expression tag. Expression varies depending on the nature of the gene.
Components:	The ORF clone is ion-exchange column purified and shipped in a 2D barcoded Matrix tube containing 10ug of transfection-ready, dried plasmid DNA (reconstitute with 100 ul of water).
Reconstitution Method:	<ol style="list-style-type: none"> 1. Centrifuge at 5,000xg for 5min. 2. Carefully open the tube and add 100ul of sterile water to dissolve the DNA. 3. Close the tube and incubate for 10 minutes at room temperature. 4. Briefly vortex the tube and then do a quick spin (less than 5000xg) to concentrate the liquid at the bottom. 5. Store the suspended plasmid at -20°C. The DNA is stable for at least one year from date of shipping when stored at -20°C.
RefSeq:	<u>NM_001110305.1</u> , <u>NP_001103775.1</u>
RefSeq Size:	3434 bp
RefSeq ORF:	1875 bp
Locus ID:	50868
UniProt ID:	<u>Q9Z2X8</u>
Cytogenetics:	9 A3
Gene Summary:	Acts as a substrate adapter protein for the E3 ubiquitin ligase complex formed by CUL3 and RBX1 and targets NFE2L2/NRF2 for ubiquitination and degradation by the proteasome, thus resulting in the suppression of its transcriptional activity and the repression of antioxidant response element-mediated detoxifying enzyme gene expression. Retains NFE2L2/NRF2 and may also retain BPTF in the cytosol. Targets PGAM5 for ubiquitination and degradation by the proteasome (By similarity).[UniProtKB/Swiss-Prot Function]