

Product datasheet for **MG225853**

Bmp6 (NM_007556) Mouse Tagged ORF Clone

Product data:

Product Type:	Expression Plasmids
Product Name:	Bmp6 (NM_007556) Mouse Tagged ORF Clone
Tag:	TurboGFP
Symbol:	Bmp6
Synonyms:	D13Wsu115; D13Wsu115e; Vg; Vgr1
Mammalian Cell Selection:	Neomycin
Vector:	pCMV6-AC-GFP (PS100010)
E. coli Selection:	Ampicillin (100 ug/mL)



[View online »](#)

ORF Nucleotide Sequence:

>MG225853 representing NM_007556
 Red=Cloning site Blue=ORF Green=Tags(s)

TTTTGTAATACGACTCACTATAGGGCGGCCGGAATTCGTCGACTGGATCCGGTACCGAGGAGATCTGCC
 GCC**CGGATCGCC**

ATGCCCGGCTGGGGCGGAGGGCGCAGTGGCTGTGCTGGTGGGGTTGCTGTGCAGCTCGGCCCCC
 CGCCACTGCGGCCCTCTGCCGTAGCCGCGGCCCGCCGGGGGCGAGCTGCTGGGAGCCGGCGGGAG
 CCCGGTGCAGCTGAGCAGCCACCGCCACAGTCTCTTCTTCGGGCTTCCTATCGCGGCTCAAGACC
 CACGAGAAGCGGGAGATGCAAAAGGAGATCCTGTCCGTGCTGGGGCTCCCGCACAGGCCGCGGCCCTGC
 ACGGTCTCCAGCAGCCTCAGCCCCGGTCTCCCGCCACAGCAGCAGCAGCAGCAGCAGCAGCAGCAGC
 GGCCCGCAGGAGCCCCCTCAGGGCGGCTGAAGTCCGCTCCACTCTTCATGCTGGATCTCTACAACGCC
 CTGTCCAATGACGACGAAGAGGATGGGGCATCGGAGGGTGTGGGGCAAGAGCCTGGGTCCACGGAGGGG
 CCAGCTCGTCCCAGCTCAGGCAGCCGTCTCCCGCGCTGCACACTCCTTGAACCGCAAGAGTCTCCTGGC
 CCCGGGACCCGGTGGCGGTGCGTCCCCTGACTAGCGCGCAGGACAGCGCTTTCCTCAACGACCGGGAC
 ATGGTCATGAGCTTTGTGAACCTGGTGGAGTACGACAAGGAGTTCTCCCCACATCAACGACACCACAAG
 AGTTCAAGTTCAACCTATCCCAGATTCTGAGGGTGAAGCGGTGACGGTCTGAGTTCCCGCTCTACAA
 GGACTGTGTGGTGGGAGTTTTAAAAACCAACCTTTCTTATCAGCATTTACCAAGTCTTGCAGGAGCAT
 CAGCACAGAGACTCTGACCTATTTTTGTTGGACACCCGGTGGTGTGGGCCTCAGAAGAAGTTGGCTGG
 AATTTGACATCACAGCAACTAGCAATCTGTGGTGGTACACCGCAGCACAACATGGGGCTCCAGCTGAG
 TGTGGTACTCGGATGGACTCCACGTCAACCCCGTGCAGCGGGCTGGTGGGCAGAGACGGCCCTTAC
 CACAAGCAGCCCTTCATGGTGGCCTTCTCAAGGTGAGCGAGGTCCACGTGCGCACACCACAGTCAGCT
 CCAGTCGGCGGGCAGCAGAGTGCACCCGTCACCCAGTCGACAGAGTGTCCCGGGGCTCCGGTTC
 TTCAGACTACAACGGCAGTGAATAAAAACAGTTGCAAGAAGCATGAGCTCTATGTGAGCTTCCAGGAC
 CTGGGATGGCAGGACTGGATCATTGCACCCAAAGGCTACGCTGCCAACTACTGTGATGGAGAGTGTCTCT
 TCCCACTCAACGCACACATGAATGCCACCAACCACGCCATTGTACAGACCTTGGTCCACCTTATGAATCC
 CGAGTACGTCCCCAAACCATGCTGCGCACCAACCAAACTGAATGCCATCTCGTTCTTTACTTCGATGAT
 AACTCCAATGTCATCTTGAAAAGTACAGGAATATGGTCGTGAGAGCTTGTGGTTGCCAT

ACGCGTACGCGGCCGCTCGAG - GFP Tag - GTTTAA

Protein Sequence:

>MG225853 representing NM_007556
 Red=Cloning site Green=Tags(s)

MPGLGRRQWLCWWWGLLCSGPPPLRPPLPVA AAAAGGQLLGAGGSPVRAEQPPPPQSSSSGFLYRRLKT
 HEKREMQKEILSVLGLPHRPRPLHGLQQPQPPVLPQQQQQQQQQTAREEPPPGRLKSAPLFMLDLYNA
 LSNDDEEDGASEGVQEPGSHGGASSQLRQPSPGAHSLNRKSLAPGPGGGASPLTSAQDSAFLNAD
 MVMSFVNLVEYDKEFSPHQRRHKFKFNLSQIPEGEAVTAAEFRVYKDCVVGSGFKNQTFILISIQVLQEH
 QHRSDLFLLDTRVWASEEGWLEFDITATSNLWVYTPQHNMGLQLSVVTRDGLHVNPRAAGLVGRDGPY
 DKQPFMVAFFKVSEVHVRTTRSASSRRRQSRNRSTQSQDVSRSRSGSSDYNGSELKTACKKHELIVSFQD
 LGWQDWIIAPKGYAANYCDGECFPLNAHMNATNHAIQTLVHLMNPEYVVPKCCAPTCLNAISLVYFDD
 NSNVILKKYRNMVVRACGCH

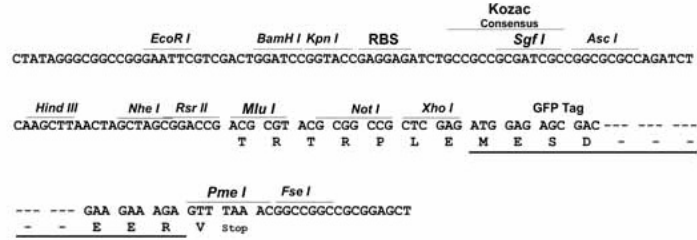
TRTRPLE - GFP Tag - V

Restriction Sites:

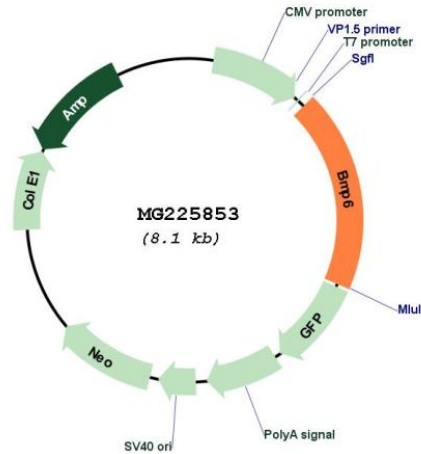
Sgfl-MluI

Cloning Scheme:

Cloning sites used for ORF Shutting:



Plasmid Map:



ACCN: NM_007556

ORF Size: 1530 bp

OTI Disclaimer: The molecular sequence of this clone aligns with the gene accession number as a point of reference only. However, individual transcript sequences of the same gene can differ through naturally occurring variations (e.g. polymorphisms), each with its own valid existence. This clone is substantially in agreement with the reference, but a complete review of all prevailing variants is recommended prior to use. [More info](#)

OTI Annotation: This clone was engineered to express the complete ORF with an expression tag. Expression varies depending on the nature of the gene.

Components: The ORF clone is ion-exchange column purified and shipped in a 2D barcoded Matrix tube containing 10ug of transfection-ready, dried plasmid DNA (reconstitute with 100 ul of water).

Reconstitution Method:

1. Centrifuge at 5,000xg for 5min.
2. Carefully open the tube and add 100ul of sterile water to dissolve the DNA.
3. Close the tube and incubate for 10 minutes at room temperature.
4. Briefly vortex the tube and then do a quick spin (less than 5000xg) to concentrate the liquid at the bottom.
5. Store the suspended plasmid at -20°C. The DNA is stable for at least one year from date of shipping when stored at -20°C.

RefSeq: [NM_007556.3](#)

RefSeq Size: 2410 bp

RefSeq ORF: 1533 bp

Locus ID: 12161

UniProt ID: [P20722](#)

Cytogenetics: 13 18.15 cM

Gene Summary: This gene encodes a secreted ligand of the TGF-beta (transforming growth factor-beta) superfamily of proteins. Ligands of this family bind various TGF-beta receptors leading to recruitment and activation of SMAD family transcription factors that regulate gene expression. The encoded preproprotein is proteolytically processed to generate each subunit of the disulfide-linked homodimer. This protein regulates a wide range of biological processes including iron homeostasis, fat and bone development, and ovulation. Mice lacking this gene exhibit delayed ossification of the sternum, iron overload, and reduced fertility in females. [provided by RefSeq, Jul 2016]