

Product datasheet for **MG225829**

Bcl9l (NM_030256) Mouse Tagged ORF Clone

Product data:

Product Type:	Expression Plasmids
Product Name:	Bcl9l (NM_030256) Mouse Tagged ORF Clone
Tag:	TurboGFP
Symbol:	Bcl9l
Synonyms:	B9L; BC003321; BCL9-2; DLNB11
Mammalian Cell Selection:	Neomycin
Vector:	pCMV6-AC-GFP (PS100010)
E. coli Selection:	Ampicillin (100 ug/mL)
ORF Nucleotide Sequence:	>MG225829 representing NM_030256 Red=Cloning site Blue=ORF Green=Tags(s)

TTTTGTAATACGACTCACTATAGGGCGGCCGGAATTCGTCGACTGGATCCGGTACCGAGGAGATCTGCC
GCC**CGATCGCC**

ATGAGGATCCTGGCTAACAAAGACAAGGTTACCCACCCAGGAGGAGAGAGGCTCCAGGGAGTCCACCGC
TGTCCCTCGGGGCACTGCCCTGCCCCAGCAAGCAATGCACCCAGAAAAATAACTGACCAATCA
TGGCAAGACAGGGAATGGAGGGGCCAATCCCAGCACCAGAATGTGAACCAAGGACCCACCTGCAACCTG
GGCTCAAAGGGCGTGGGGCGGGAGCCATGGGGCCAAGGCAACCAGATCTCACCTAGCAACTCAAGTC
TGAAGAACCCCGAGCAGGAGTGTCTCCTTTCAGCTCACTCAAGGCAAGGTGAAGCGCAGAGGAGTGT
GTCTGTGGACTCTGGAGAGCAGCGGAAGCTGGGACTCCATCCCTCGATTAGAGGCCAAAGAGGTGGCA
CCCCGGAGTAAACGGAGGTGTGTCTGGAGCGGAAGCAGCCGTACAGTGGGGACGAATGGTGTCTGGGC
CAGACAGCGAGGAGGACGACAAGCCATTGCGGCCGCCACAATTGTAATGTAGCAGACCCAGCCATGGT
GACCCACAGTTGGTCTTGCCAAACTGCCAACTGCCCTCAGTGAGAGCAGTGCACCAGGCCCCCAA
CATGGCCCCAGCCAGGCCTTCGGCCAGACGTTCTGGGGTGGGGTGGGGGCTCCAGGAAAGCCTC
CGTCACAGTTCGTCTATGTCTTACCACCCATCGGCCAACACAGCGCAGAGGCAGTGTGCAGGGCCG
GGCAGGTCCATCCTTGCTACCACCAGCAGAAATGTGCCTCGGCCAAGCTGGATCAGGCCCTAAAGTG
CCACCCAGCCAGAACCTACCCCTGAATACGCCATCAGCAGGTACACCACAGTCCCAGCCACCTCCTT
TGCCACCGCCACCCAGCCCTGGCAGTGCCTCCTGCTCTGCCCCGGAGGGGCTCCTGAAGACAC
CAGTCAGGACCTGGCCCCAACTCAGTGGGAGCTGCCAGTACAGGTGGTGGGACTGGGGTACCCACCT
AACACCCCAACGGCTGCCACCGCTAACAAACCTCTGCCTCCTGGAGGAGACCCTGGCAGTCCCCTGGCT
CCGCCCTATTGGGGAGGCCACGCCACCGGAAATGGGCAGAGGAACCTGGTGGGCTCTGAGGGCTGTC
CAAAGAGCAGCTGGAGCACGGGAGCGCTCCCTCCAGACTGCGGGACATCGAGAGGCTGCTGCTCCG
AGTGGGGAGACTGAGCCCTTCTCAAGGGGCCCGGGAGGAGCTGGTGGGGAGGCCACCGGCACAAG
CGCCCTGCTGCTCAACCGCTCCCTCGCCCTCCTGGGGGTGAAGAAGTATGAGGAGCCTCTGCA
GTCAATGATCTCAGACACAGAGCCTAGGAGTCCCCCTCTGGAGCATGAAGTGCCGGGCACCCTCAG



[View online »](#)

GGTGGAGACATGGGACAGCAAATGAACATGATGATGCAGAGGCTGGGCCAGGACAGTCTGACGCCCGAGC
 AGGTGGCCTGGCGCAAACCTGCAGGAAGAGTACTACGAGGAGAAGCGGGGAAAGAGGAGCAGATTGGATT
 GCACGGAGGCCGCCCTCTGCAGGACATGGTGGGAATGGGGGTATGATGGGGAGGGGGCCCCACCTCCT
 TACCACAGCAAACCTGGGGATCAGTGGCCACCTGGAATGGGTGCACAACCTCCGAGGGCCTATGGATGTCC
 AAGATCCCATGCAGCTCCGACCTGGACCTCCCTCCCTGGCCCCGTTTCCCAGGCAACCAGATGCAAAG
 GGTGCCCGGATTTGGAGGTATGCAGAGTATGCCCATGGAAGTACCCATGAATGCCATGCAGAGACCTGTA
 AGGCCAGGCATGGCCTGGAATGAAGACTTGCCTTATGGGGGACCCAGCAACTTGGCCAGAATGCCG
 TGCCCTACCCAGGTGGGCAAGGGGAGGCAGAGCGATTATGACCCCTCGTGTCCGGGAGGAGCTGCTGAG
 GCACCAAGTTGCTGGAGAAGCGGTCCATGGGCATGCAGCGTCCCCTGGGCATGGCAGGTAGCGGCATGGGA
 CAGAGCATGGAATGGAACGGATGATACAGGCTCATCGACAGATGGACCCTGCCATGTTCCCGGGACAGA
 TGACTGGAGGAGATGGTCTCGCCGGCACACCCATGGGCATAGAGTTTGGTGGAGGTGGGGCCTCCTGAG
 CCCTCCAATGGGACAGTCTGGGCTGCGGGAGGTAGACCCGCTATGGGGCCAGGCAACCTCAACATGAAC
 ATGAATGTGAACATGAACATGAACATGAACCTGAATGTGCAGATGACGCCCCAGCAGCAGATGCTGATGT
 CACAGAAGATGCGGGGCCCTGGAGACATGATGGGTCTCAGGGCCTCAGTCCCGAAGAGATGGCTCGGT
 TCGGGCCAGAACAGTAGTGGCATGATGGGGGTCCGAGAAGATGCTCATGCCTTCCAGTTTCCCAAC
 CAGGGCCAGCAGGGATTCTTGGGGGCCAGGGACCTTACCAAGCCATGCCCCAGGACATGGGCAACTC
 CAGACATGTTAGCCCTGATCAGAGTTCAGTGCCCATGGGCACTGTGGGCACTGCCCGGCTCAGCCATAT
 GCCTTGGCCCCCTGCCTCCAATCCTCCTGGGTCTGTGCACTTGGCCTCCAACAGGGGGCTAGGCAGGCGG
 CCTTCAGATCTCACCATCAGTATTAATCAGATGGGCTCACCGGCATGGGACATCTGAAGTACCCACCC
 TTAGCCAGGTGCACTCCCCCTGGTCACTCACCTCTGCCAACCTCAAGTACCCCCAGACTCCCTCCCA
 GATGGTACCCTTGCTTCTGCCAACCCACCGGGACCTCTCAAGTACCCCCAGGTCTCAGCTTTCCTC
 GGTGTGCGTTTACCCACTGGCTCACCCAGCAGGCTCAAGTCTCCCTCCATGGCGGTGCCTTCTCCAGGT
 GGTGCGCTCTCCAAGACAGCCATGCCTAGTCTGGGGTCTCCAGAACAGCAGCCACTCTCAGCAT
 AAACCTTCTCCTCCACCCTGGGCAAGCTGGAACAGGGTGTCTTCCACCTAGCGCACCCCGAACAGCTCC
 TCCGCTCCTCCCGCAACCCCTTCCAGTGGCCTCATGAACCCAGCCTACCGTTCCATCCTCCCCAGACC
 CCACCCCTTCCAGAACCTCTGTCACTGATGATGTCTCAGATGTCCAAGTACGCCATGCCAGCTCGAC
 CCCGCTATACCACAACGCCATCAAGACCATCGCCACCTCAGATGACGAGCTGCTGCCTGACCGGCCCTG
 CTACCCCAACCCACCACCGCAGGGCTCTGGGCCAGGTATCAGCAATAACCAGCCCAACCAGATGCACA
 TGAACCTGCTGCTGCCAGAGCCCATGGGCATGAACCTGCCAGGCCAGCAGCCCTGTCCATGAGCC
 TCCCCCTACTATGTTGCCCTCCCCACCCCTCTGGGGTCCAACATTCCACTGCATCCCAATGCACAGGGG
 ACTGGGGCTCTTCTCAAACTCAATGATGATGGCCCCAGGAGGCCAGACTCCCTAAATGCCCTTGTG
 GCCTGTGCCAGCTCCTCCAGATGATGTCTTCCCTCCTCGGCTGCAGCAACCTCACGGTGCATGGC
 CCCCACCGGGGCCGGGGCCAGGCCTGCAGCAGCACTACCTTCCAGGCATGGCCCTGCCCCCGAGGAC
 CTGCCACCCAGCCACCGGGTCCCATACCCCCCAGCAGCACCTAATGGGCAAAGGCATGACTGGCCGCA
 TGGGCGACGCATACCCACCCGGGTGCTCCCTGGGGTGGCATCGTACTGAATGACCCAGAGCTGAGTGA
 GGTGATCCGGCCACCCCTACCGGCACTTCTGAGTTCGACTTATCCAGGATCATCCCTCTGAGAAACCA
 AGCAGCACCTCCAGTACTTCCCAAGAGCGAGAACCAGCCCCCAAGGCCAGCCCCCAATCTGCATC
 TCATGAACCTGCAGAACATGATGGCAGAGCAGACCCCGTCTGACCCCCAACCTCCCGGGCCAACAGGG
 GGTCCAGCGGGGGCTCAGCATGTCCATGTGCCACCTGGACAGATGTCTTGGTGGCAGGACAGGTGTG
 CCCCCACAACAGGCATGGTGGCCATGGCCTGCACCAGGGGGTATGTCCCTCCACAAGGCCTCATGA
 CCCAGCAGAATTTATGCTGATGAAGCAGAGGGGTGTGGGGGGCAGGTCTACACCCAGCCTCCCCACAT
 GCTCTCCACAGGGCTCCCTCATGGGCCCCCCACCCAGCAGAACCTCATGGTGTCCCACCTCTGCGT
 CAGCGCAGTGTCTCTGGACAGCCAGATGGGCTACCTGCCAACGCCGGGAGCATGGCCATCTACCTT
 C

ACGCGTACGCGGCCGCTCGAG - GFP Tag - GTTTAA

Protein Sequence: >MG225829 representing NM_030256
 Red=Cloning site Green=Tags(s)

```

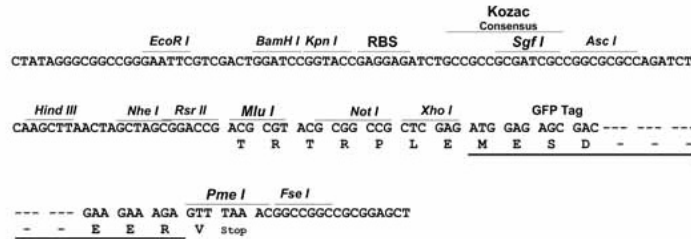
MRILANKTRLPHRRREAPGSPPLSPRGHCPPAPAKPMHPENKL TNHGKTGNGGAQSQHQNVNQPTCNL
GSKGVGAGSHGAKANQISPSNSSLKNPQAGVSPFSSLKGVKRRERSVSVDSGEQREAGTPSLDSEAKEVA
PRSKRRCVLERKQPYSGDEWCSGPDSEEDDKPIAAAHNCNVADPAMVTPQLGPGQTAQLPLSESSAPGPQ
HGPQPGLRPDVPGGGGGVPKPPSQFVYVFTTHLANTA AEAVLQGRAESILAYHQNVPRAKLDQAPKV
PPTPEPLPLNTPSAGTPQSQPPPLPPPPAPGSAPPALPPEGPPEDTSQDLAPNSVGAASTGGGTGGTHP
NTPTAATANNPLPPGGDPGSAPGSALLGEATPTGNGQRNLVGSEGLSKEQLEHRERSLQTLRDIERLLL
SGETEPFLKGGGAGGPPAQAPSAAQPPPSAPPGLKYYEELQSMISQTQSLGGPPEHEVPGHPQ
GGDMGQQMNMQRLLGQDSL TPEQVAWRKLQEEYEEKRRKEEQIGLHGGRPLQDMVGMGMMGRGPPPP
YHSPKPDQWPPGMAQLRGPMDVQDPMQLRPGPPFPGRFPGNQMRVPGFVGGMQSMPMEVPMNAMQRV
RPGMAWNEDLPPIGGPSNFAQNAVYPGGQGEAERFMTPRVREELLRHQLLEKRSMGMRPLGMAGSGMG
QSMEMERMIQAHRQMDPAMFPGQMTGGDLAGTPMGIEFGGGRGLLSPPMGQSGLREVDPPMGPNLNMN
MNVNMNMNMLNVQMT PQQMLMSQKMRGPGDMMGPQGLSPEEMARVRAQNSSGMMGGPQKMLMPSQFPN
QQQQGSGGQGPYQAMPQDMGNTPDMFSPDQSSVPMGTVGTARLSHMLPPASNP PGSVHLASNRGLGRR
PSDLTISINQMGSPPGMHLKSP TLSQVHSP LVTSPSANL KSPQTPSQMVPLPSANPPGPKSPQVLSSSL
GVRSP TGS SRLKSPSMAVSPGWVAPK TAMPSPGVSQNKQPPLSINSSSTLGNVEQ GALPPSAPRNS
SAPPANPSSGLMNP SLPFTSSPDPTPSQNP LSLMMSQMSKYAMPSS TPL YHNAIKT IATSDELLPDRPL
LPPPPPPQGGSPGI SNNQPNQMHNPA AAQSPMG MNLPGQQPLSHEPPPTMLPSPTPLGSNIPLHPNAQG
TGGSSQNSMMMAPGGPDSL NAPCGPV PSSSQMMSFP PRLQPHGAMAPT GAGGGLQQHYPSGMALPPED
LPTQPPGPIPPQQHLMGKGMTGRMGDAYPPGVLP GVASVLNDPELSEVIRPTPTGIPEFDLSRIIPSEK
SSTLQYFPKSENQPPKAQPPNLHLMNLQNMMAEQTPSRPPNLPGQQGVQRGLSMSMCHPGQMSLLGRTGV
PPQQGMVPHGLHQGVMSPPQGLMTQQNFMLMKQRGVGGEVYTQPPHMLSPQGLMGGPPPQQNLMVSHPLR
QRSVSLDSQMGYLP TPGSMANLPF
    
```

TRTRPLE - GFP Tag - V

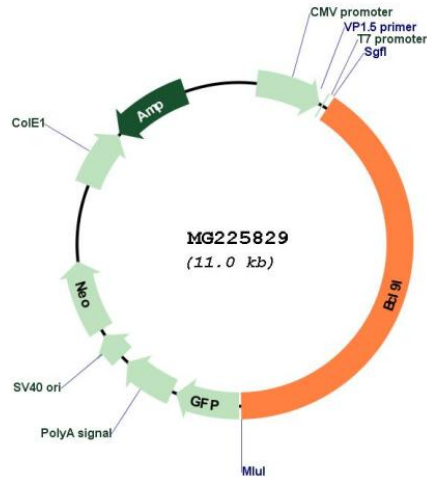
Restriction Sites: SgfI-MluI

Cloning Scheme:

Cloning sites used for ORF Shutting:



Plasmid Map:



ACCN: NM_030256

ORF Size: 4482 bp

OTI Disclaimer: The molecular sequence of this clone aligns with the gene accession number as a point of reference only. However, individual transcript sequences of the same gene can differ through naturally occurring variations (e.g. polymorphisms), each with its own valid existence. This clone is substantially in agreement with the reference, but a complete review of all prevailing variants is recommended prior to use. [More info](#)

OTI Annotation: This clone was engineered to express the complete ORF with an expression tag. Expression varies depending on the nature of the gene.

Components: The ORF clone is ion-exchange column purified and shipped in a 2D barcoded Matrix tube containing 10ug of transfection-ready, dried plasmid DNA (reconstitute with 100 ul of water).

Reconstitution Method:

1. Centrifuge at 5,000xg for 5min.
2. Carefully open the tube and add 100ul of sterile water to dissolve the DNA.
3. Close the tube and incubate for 10 minutes at room temperature.
4. Briefly vortex the tube and then do a quick spin (less than 5000xg) to concentrate the liquid at the bottom.
5. Store the suspended plasmid at -20°C. The DNA is stable for at least one year from date of shipping when stored at -20°C.

RefSeq: [NM_030256.3](#)

RefSeq Size: 5341 bp

RefSeq ORF: 4485 bp

Locus ID: 80288

UniProt ID: [Q67FY2](#)

Cytogenetics: 9 A5.2

Gene Summary: Transcriptional regulator that acts as an activator. Promotes beta-catenin transcriptional activity. Plays a role in tumorigenesis. Enhances the neoplastic transforming activity of CTNNB1.[UniProtKB/Swiss-Prot Function]