

## Product datasheet for **MG225828**

### Gnas (NM\_001077507) Mouse Tagged ORF Clone

#### Product data:

Product Type:	Expression Plasmids
Product Name:	Gnas (NM_001077507) Mouse Tagged ORF Clone
Tag:	TurboGFP
Symbol:	Gnas
Synonyms:	5530400H20Rik; A930027G11Rik; C130027O20Rik; G; Ga; Galphas; Gn; Gnas1; Gnasxl; GPSA; Gs-; Gs-alpha; Gsa; GSP; N; Nes; Nesp; Nesp55; NespI; Oed; Oed-Sml; OedsmI; P; P1; P2; P3; PHP1A; PHP1B; POH; SCG; SCG6; XL
Mammalian Cell Selection:	Neomycin
Vector:	pCMV6-AC-GFP (PS100010)
E. coli Selection:	Ampicillin (100 ug/mL)
ORF Nucleotide Sequence:	>MG225828 representing NM_001077507 Red=Cloning site Blue=ORF Green=Tags(s)

TTTTGTAATACGACTCACTATAGGGCGGCCGGAATTCGTCGACTGGATCCGGTACCGAGGAGATCTGCC  
GCC**CGATCGCC**

ATGGGCATGTTCAACTGCCTCCACGGCAATAATATGTCAGGACAACACGATATCCCCCTGAAGTCGGGG  
AGCAGCCCGAGCAAGAACCTTTGGAAGCCCGAGGGCAGCTGCCCCCGTCTGGGGCTGGCCAGCCGA  
AGAAATGGCGACCGAACCAGGACTCCGAACCGTCTAACAATGAGCCCGTCCCCGACGAGACTGGCAGTGAG  
ATCAGTGGACCCCGAGAAGACTCCTCAATCTGACATCCAAAGCCCTGCCAGGCCTTCGAGGAAGTCCGAG  
TGGGTGGAGACTACAGCCACCTCCGGAGGAAGCCATGCCATTCGAGACACAACAGCCAGCCTGGGAGA  
TTTCTGGCCACCCTGGAGCAGCCAGGACCATCTGGGACCCCATCAGGCCTCAAGCCTTCAACCCAGCG  
ATTTTGGAGCCCGGACCCCACTGGCGGAGCCAGGCCTGGGAGCCTATACCCCCACCAGAAGAAG  
CTATGCCATTTGAGTTCAACGAGCCTGCCAGGGAGACCATAGCCAGCCTCCCTTGAAGTCCAGACCT  
TGCGCCAGGAGGTCCGGAAGCATTGGTCCCGAGGCTCTCCCGGAGCCCGGGAACATCAGATTTGAA  
AACGCTGGCTTCCGAGAAGACTACAGCCCTCCCCCTGAAGAATCTGTGCCATTTAGGTCGGTGGAGAAG  
AATTCGGGGCGATAGCCACCCCAAGGACTCCCGCGAGTCATCCACAATCGGCATTGGCGGCGAGTT  
CCCGACAGTCGCGGTCCCGAGTGCCTCTGCCTCGCTCCCGCGAGAACGCGCCTCCCTCTGGTCCGA  
GGCGCCATTGACAGACCATTCGCGAGGCTGTCAGATCTCCTCCTAACTTCGCATGCGACAGCCCCCGA  
TGGAGATCACCAGACCCCTGCTTGAATGGCAGAGCCTCATTGGGGTCGACGACGACACCCGCTGTCAA  
TATGGACAGCCCCCAATCGCAAGTGTGGCCCGCCATCGAAGTCTCGGGAGCCCCAGATAAGAGCGAG  
TGCGCAGAGAGACCCCAAGTTGAGCGAGAAGCAGCCGAGATGGAAGGAAGCCCTACCACCCCACTGCGG  
TGAAGGAAAAGTCCCTCTCCGGAGAGAGGGGACGGATCTTCCACCCAGCCTGAAGCAATGGATGCCAA  
GCCAGCCCTGCTGCCAAGCCGTCTACCGGATCTGATGCTGGAGCTCCTACGGATTCGCGGATGCTC  
ACAGATAGCCAGAGCGATGCCGAGAAGACGGGACAGCCCAAGAACGCCTTTCAGATCTCCAGTCCGATC



[View online »](#)

CTGAAGAAGCTCGAAGAAGCCCCAGCTGTCCGCGCCGATCCTGACGGAGGGGCAGCCCCAGTCGCCCCAGC  
 CACTCCTGCCGAGTCCGAGTCTGAAGGCAGCAGAGATCCAGCCGCCGAGCCAGCCTCCGAGGCAGTCCCT  
 GCCACCACGGCCGAGTCTGCCTCCGGGGCAGCCCTGTACCCAGGTGGAGCCCGCAGCCGCGGCAGTCT  
 CTGCCACCCTGGCGGAGCCTGCCGCCGGGCAGCCCTATCACCCCAAGGAGCCCACTACCCGGGCAGT  
 CCCCTCTGCTAGAGCCCATCCGGCCGCTGGAGCAGTCCCTGGCGCCCAAGCAATGTCAGCCTCTGCTAGG  
 GCAGCTGCCGCTAGGGCAGCCTATGCAGTCCACTGGTCTGGGGAGCCAGGTCACTCTCAGTACTCCCG  
 CCGCTCGGGCATCCCTTCTGCCCGCGCAGCAGTCCCGCCGGGCAGCCTCTGCTGCCCGCAGTCCG  
 TGCTGGCCGGTACGCTCTGCCGCCCCAGCAGGGCCATCTTAGACCCCCAGCCCGAGATCCAGGTT  
 GCTGACCCGCTACTCCGCGGCCTCTCCGCGGCCGACTGCCTGGCTGACAAGTACGAGCGGGGCCGAA  
 GCTGCTGCAGGTACGAGGCATCGTCTGGCATCTGCGAGATCGAGTCTCCAGTGTAGTTCGGAAGAAGG  
 GGCCACCGGCTGCTTCCAGTGGCTTCTGCGGCGAAACCGCCGCTGGCCTGCCCGGAGCCACACGGTC  
 GGGAGCAACCCAGTCCGCAACTTCTTACCCGAGCCTTCGGAAGTGTCTCGGTCTATCCGAGTGTACCC  
 GATCACGATCCCTCAGCCCGGGAAGGCCAAGGATCCTATGGAGGAGAGGCGCAAACAGATGCGCAAAGA  
 AGCCATTGAGATGCGAGAGCAGAAGCGCGCAGATAAGAAACGCAGCAAGCTCATCGACAAGCAACTGGAG  
 GAGGAGAAGATGGACTACATGTGTACACACCGCCTGCTGCTTCTAGGTGCTGGAGAGTCTGGCAAAAGCA  
 CCATTGTGAAGCAGATGAGGATCCCTGCATGTTAATGGGTTTAAACGGAGATAGTGAGAAGGCCACTAAAGT  
 GCAGGACATCAAAAACAACCTGAAGGAGGCCATTGAAACCATTGTGGCCGCCATGAGCAACCTGGTGCC  
 CCTGTGGAGTGGCAACCCCTGAGAACCAGTTCAGAGTGGACTACATTCTGAGCGTGATGAACGTGCCGA  
 ACTTTGACTTCCCACCTGAATTCTATGAGCATGCCAAGGCTCTGTGGGAGGATGAGGGAGTGCCTGCCTG  
 CTACGAGCGCTCCAATGAGTACCAGTGTACTGTGCCAGTACTTCTGGACAAGATTGATGTGATC  
 AAGCAGCCGACTACGTGCCAAGTGACCAGGACCTGCTTCTGCGCGGTCTCTGACCTCTGGAATCTTTG  
 AGACCAAGTTCAGGTGGACAAAGTCAACTTCCACATGTTGATGTGGGCGCCAGCCGATGAGCGCCG  
 CAAGTGGATCCAGTCTCAATGATGTACTGCCATCATCTTCTGGTGGCCAGCAGCAGCTACAACATG  
 GTATTGGGAGGACAACCCAGACTAACCCGCTGCAGGAGGCTCTGAACCTTCTCAAGAGCATCTGGAACA  
 ACAGATGGCTGCGCACCTCTCTGTGATTCTTCTTCTCAACAAGCAAGACCTGCTTGTGAGAAAGTCT  
 CGCTGGCAAAATCGAAGATTGAGGACTACTTTCCAGAGTTCGCTCGCTACACCACTCCTGAGGATGCGACT  
 CCCGAGCCGGGAGAGGACCCACGCGTGACCCGGGCCAAGTACTTCTTCCGGGATGAGTTTCTGAGAATCA  
 GCACTGCTAGTGGAGATGGGCGCCACTACTGCTACCCTCACTTTACCTGCGCCGTGGACTGAGAACAT  
 CCGCCGTGCTTCAACGACTGCCGTGACATCATCCAGCGCATGCATCTCCGCAATACGAGCTGCTC

AGCGGACCGACGCGTACGCGGCCGCTCGAG - GFP Tag - GTTTAA

**Protein Sequence:**

>MG225828 representing NM\_001077507  
 Red=Cloning site Green=Tags(s)

MGMFNCLHGNMNSGQHDIPPEVGEQPEQPELEAPGAAAPGAGAGPAEEMATEPDPSEPSNNEPVPDETGSE  
 ISGPPEDSKSDIQSPCQAFEEVVRVGGDYSPPEEAMPFETQQPSLGFWPTLEQPGPSGTPSGLQAFNPA  
 ILEPGTPTGASPLGAYTPPPEEAMPFEFNEPAQGDHSQPPLQVPDLAPGGPEALVPRALPAEPGNIRFE  
 NAGFREDYSPPEESVFPQVGGEEFGGDSPPPGLPRVIPQIGIGGEFPTVAVPSALCLAPAEENAPPLWVR  
 GAIDRPFREAVRSPPNFACDSPMEITRPLLEIGRASIGVDDDTAVNMDSPPIASDGPIEVSGAPDKSE  
 CAERPPVEREAEMEGSPTTATAVEGKVPSPERGDGSSTQPEAMDAPAAQAVSTGSDAGAPTDASML  
 TDSQSDAGEDGTAPGTPSDLQSDPEELEAPAVRADPDGGAAPVAPATPAESESEGRDPAEPASEAVP  
 ATTAESASGAAPVTQVEPAAAASATLAEPAAARAAPITPKPTTRAVPSARAHAAAGAVPGAPAMSASAR  
 AAAARAAYAGPLVWGARSLSATPAARASLPARAAAAARAASAARAVAAGRSASAAPSRAHLRPPSPEIQV  
 ADPPTPRPPRPTAWPDKYERGRSCCRYEASSGICEIESSDESEEGATGCFQWLLRRNRPPGLPRSHTV  
 GSNPVRNFFTRAFGSCFGLSECTRSRSLSPGKAKDPMEEERRKQMRKEAIEMREQRADKRRSKLIDKQLE  
 EEKMDYMCTHRLLLLGAGESGKSTIVKQMRILHVNGFNGDSEKATKVQDIKNNLKEAIIETIVAAMSNLVP  
 PVELANPENQFRVDYILSVMNVPNFDFPPEFYEHAKALWEDEGVRACYERSNEYQLIDCAQYFLDKIDVI  
 KQADYVPSDQDLLRCRVLTSIGIFETKFQVDKVNFMFDVGGQRDERRKWIQCNDVTAIIFVVAASSYNM  
 VIREDNQTNRLQEALNLFKSIWNNRWLRTISVILFLNKQDLLAEKVLGKSKIEDYFPEFARYTTPEDAT  
 PEPGEDPRVTRAKYFIRDEFIRISTASGDGRHYCYPHFTCAVDTENIRRVFNDCRDIQRMHLRQYELL

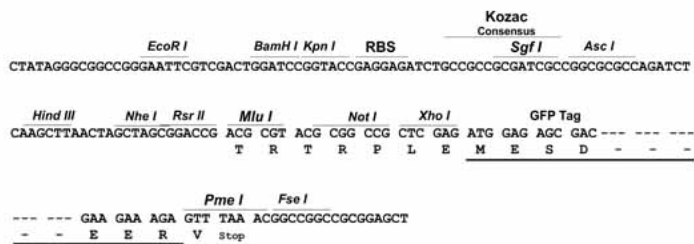
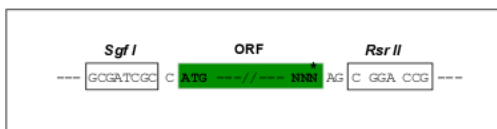
SGPTRRRLE - GFP Tag - V

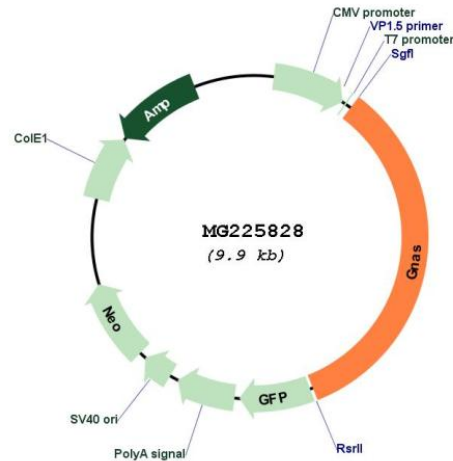
Restriction Sites:

SgfI-RsrII

Cloning Scheme:

Cloning sites used for ORF Shutting:



**Plasmid Map:**


**ACCN:** NM\_001077507

**ORF Size:** 3357 bp

**OTI Disclaimer:** The molecular sequence of this clone aligns with the gene accession number as a point of reference only. However, individual transcript sequences of the same gene can differ through naturally occurring variations (e.g. polymorphisms), each with its own valid existence. This clone is substantially in agreement with the reference, but a complete review of all prevailing variants is recommended prior to use. [More info](#)

**OTI Annotation:** This clone was engineered to express the complete ORF with an expression tag. Expression varies depending on the nature of the gene.

**Components:** The ORF clone is ion-exchange column purified and shipped in a 2D barcoded Matrix tube containing 10ug of transfection-ready, dried plasmid DNA (reconstitute with 100 ul of water).

**Reconstitution Method:**

1. Centrifuge at 5,000xg for 5min.
2. Carefully open the tube and add 100ul of sterile water to dissolve the DNA.
3. Close the tube and incubate for 10 minutes at room temperature.
4. Briefly vortex the tube and then do a quick spin (less than 5000xg) to concentrate the liquid at the bottom.
5. Store the suspended plasmid at -20°C. The DNA is stable for at least one year from date of shipping when stored at -20°C.

**RefSeq:** [NM\\_001077507.2](#), [NP\\_001070975.1](#)

**RefSeq Size:** 3733 bp

**RefSeq ORF:** 3360 bp

**Locus ID:** 14683

**UniProt ID:** [Q6R0H7](#)

**Cytogenetics:** 2 97.89 cM

**Gene Summary:** This locus has a highly complex imprinted expression pattern. It gives rise to maternally, paternally, and biallelically expressed transcripts that are derived from four alternative promoters and 5' exons. Some transcripts contain a differentially methylated region (DMR) at their 5' exons, which is commonly found in imprinted genes and correlates with transcript expression. This gene has an antisense transcript. One of the transcripts produced from this locus, and the antisense transcript, are both paternally expressed noncoding RNAs, and may regulate imprinting in this region. In addition, one of the transcripts contains a second overlapping ORF, which encodes a structurally unrelated protein - Alex. Alternative splicing of downstream exons is also observed, which results in different forms of the stimulatory G-protein alpha subunit, a key element of the classical signal transduction pathway linking receptor-ligand interactions with the activation of adenylyl cyclase and a variety of cellular responses. Additional transcript variants have been found for this gene, but the full-length nature and/or biological validity of some variants have not been determined. [provided by RefSeq, Jun 2015]