

Product datasheet for **MG225826**

Gnas (NM_010309) Mouse Tagged ORF Clone

Product data:

Product Type:	Expression Plasmids
Product Name:	Gnas (NM_010309) Mouse Tagged ORF Clone
Tag:	TurboGFP
Symbol:	Gnas
Synonyms:	5530400H20Rik; A930027G11Rik; C130027O20Rik; G; Ga; Galphas; Gn; Gnas1; Gnasxl; GPSA; Gs-; Gs-alpha; Gsa; GSP; N; Nes; Nesp; Nesp55; NespI; Oed; Oed-Sml; Oedsml; P; P1; P2; P3; PHP1A; PHP1B; POH; SCG; SCG6; XL
Mammalian Cell Selection:	Neomycin
Vector:	pCMV6-AC-GFP (PS100010)
E. coli Selection:	Ampicillin (100 ug/mL)
ORF Nucleotide Sequence:	>MG225826 representing NM_010309 Red=Cloning site Blue=ORF Green=Tags(s)

TTTTGTAATACGACTCACTATAGGGCGGCCGGAATTCGTCGACTGGATCCGGTACCGAGGAGATCTGCC
GCC**CGATCGCC**

ATGGGCATGTTCAACTGCCTCCACGGCAATAATATGTCAGGACAACACGATATCCCCCTGAAGTCGGG
AGCAGCCCGAGCAAGAACCTTTGGAAGCCCGAGGGCAGCTGCCCCCGTCTGGGGCTGGCCAGCCGA
AGAAATGGCGACCGAACCGGACTCCGAACCGTCTAACAATGAGCCCGTCCCCGACGAGACTGGCAGTGAG
ATCAGTGGACCCCGAGAAGACTCCTCAATCTGACATCCAAAGCCCTGCCAGGCCTTCGAGGAAGTCCGAG
TGGGTGGAGACTACAGCCACCTCCGGAGGAAGCCATGCCATTCGAGACACAACAGCCAGCCTGGGAGA
TTTCTGGCCACCCTGGAGCAGCCAGGACCATCTGGGACCCCATCAGGCCTCAAGCCTCAACCCAGCG
ATTTTGGAGCCCGGACCCCACTGGCGGAGCCAGGCCTGGGAGCCTATACCCCCACCAGAAGAAG
CTATGCCATTTGAGTTCAACGAGCCTGCCAGGGAGACCATAGCCAGCCTCCCTTGAAGTCCCAGACCT
TGCGCCAGGAGGTCGGGAAGCATTGGTCCCAGAGCTCTCCCGGAGCCCGGGAACATCAGATTTGAA
AACGCTGGCTTCCGAGAAGACTACAGCCCTCCCCCTGAAGAATCTGTGCCATTTAGGTCGGTGGAGAAG
AATTCGGGGCGATAGCCACCCCGAGGACTCCCGCGAGTCATCCACAATCGGCATTGGCGGCGAGTT
CCCGACAGTCGCGGTCCCGAGTGCCTCTGCCTCGCTCCCGCGAGAACGCGCCTCCCTCTGGTCCGA
GGCGCCATTGACAGACCATTCGCGAGGCTGTCAGATCTCCTCCTAACTTCGCATGCGACAGCCCCCGA
TGGAGATCACCAGACCCCTGCTTGAATGGCAGAGCCTCATTGGGGTCGACGACGACACCCGCTGTCAA
TATGGACAGCCCCCAATCGCAAGTGTGGCCCGCCATCGAAGTCTCGGGAGCCCCAGATAAGAGCGAG
TGCGCAGAGAGACCCCGAGTTGAGCGAGAAGCAGCCGAGATGGAAGGAAGCCCTACCACCCCACTGCGG
TGAAGGAAAAGTCCCTCTCCGGAGAGAGGGGACGGATCTTCCACCCAGCCTGAAGCAATGGATGCCAA
GCCAGCCCTGCTGCCAAGCCGTCTACCGGATCTGATGCTGGAGCTCCTACGGATTCGCGATGCTC
ACAGATAGCCAGAGCGATGCCGAGAAGACGGGACAGCCCGGAACGCCTTCAGATCTCCAGTCCGATC



[View online >](#)

CTGAAGAAGCTCGAAGAAGCCCCAGCTGTCCGCGCCGATCCTGACGGAGGGGCAGCCCCAGTCGCCCCAGC
CACTCCTGCCGAGTCCGAGTCTGAAGGCAGCAGAGATCCAGCCGCCGAGCCAGCCTCCGAGGCAGTCCCT
GCCACCACGGCCGAGTCTGCCTCCGGGGCAGCCCTGTACCCAGGTGGAGCCCGCAGCCGCGGCAGTCT
CTGCCACCCTGGCGGAGCCTGCCGCCGGGGCAGCCCTATCACCCEAAGGAGCCCACTACCCGGGCAGT
CCCCTCTGCTAGAGCCCATCCGGCCGCTGGAGCAGTCCCTGGCGCCCCAGCAATGTCAGCCTCTGCTAGG
GCAGCTGCCGCTAGGGCAGCCTATGCAGTCCACTGGTCTGGGGAGCCAGGTCACTCTCAGCTACTCCCG
CCGCTCGGGCATCCCTTCTGCCCGCGCAGCAGCTGCCGCCGGGCAGCCTCTGCTGCCCGGCAGTCCG
TGCTGGCCGGTACGCCTCTGCCGCCCCAGCAGGGCCATCTTAGACCCCCAGCCCGAGATCCAGGTT
GCTGACCCGCCTACTCCGCGCCCTCCTCCGCGGCCGACTGCCTGGCCTGACAAGTACGAGCGGGGCCGAA
GCTGCTGCAGGTACGAGGCATCGTCTGGCATCTGCGAGATCGAGTCTCCAGTGATGAGTCGGAAGAAGG
GGCCACCGGTCTTCCAGTGGCTTCTGCGGGCAAACCGCCCTGGCCTGCCCGGAGCCACACGGTC
GGGAGCAACCCAGTCCGCAACTTCTTACCCGAGCCTTCGGAAGTCTTCCGCTATCCGAGTGTACCC
GATCACGATCCCTCAGCCCCGGGAAGGCCAAGGATCCTATGGAGGAGAGGCGCAAACAGATGCGCAAAGA
AGCCATTGAGATGCGAGAGCAGAAGCGCGCAGATAAGAAACGCAGCAAGCTCATCGACAAGCAACTGGAG
GAGGAGAAGATGGACTACATGTGTACACCCGCTGCTGCTTCTAGGTGCTGGAGAGTCTGGCAAAAGCA
CCATTGTGAAGCAGATGAGGATCCTGCATGTTAATGGGTTTAAACGGAGAGGGCGGCAAGAGGACCCGCA
GGCTGCAAGGAGCAACAGCGATGGTGAGAAGGCCACTAAAGTGCAGGACATCAAAAAACAACCTGAAGGAG
GCCATTGAAACCATTTGTGGCCGCATGAGCAACCTGGTGGCCCTGTGGAGCTGGCAACCTGAGAACC
AGTTCAGAGTGGACTACATTTCTGAGCGTGATGAACGTGCCGAACCTTGGACTTCCACCTGAATTTCTATGA
GCATGCCAAGGCTCTGTGGGAGGATGAGGGAGTGCCTGCTACGAGCGCTCCAATGAGTACCAGCTG
ATTGACTGTGCCAGTACTTCTGGACAAGATTGATGTGATCAAGCAGGCCGACTACGTGCCAAGTGACC
AGGACCTGCTTCGCTGCCGTGCTCTGACCTCTGGAATCTTTGAGACCAAGTTCAGGTGGACAAAGTCAA
CTTCCACATGTTTCGATGTGGGCGCCAGCGGATGAGCGCCGCAAGTGGATCCAGTCTTCAATGATGTG
ACTGCCATCATCTTCGTGGTGGCCAGCAGCAGCTACAACATGGTCAATTCGGGAGGACAACCAAGACTAAC
GCCTGCAGGAGGCTCTGAACCTTCAAGAGCATCTGGAACAACAGATGGCTGCGCACCATCTCTGTGAT
TCTTCTCTCAACAAGCAAGACCTGCTTGTGAGAAAAGTCTCGCTGGCAAATCGAAGATTGAGGACTAC
TTTCCAGAGTTTCGCTCGCTACACCCTCTGAGGATGCGACTCCCGAGCCGGGAGAGGACCCACGCGTGA
CCCGGGCCAAAGTACTTCAATTCGGGATGAGTTTCTGAGAATCAGCACTGCTAGTGGAGATGGGCGCCACTA
CTGCTACCCTCACTTTACCTGCGCCGTGGACACTGAGAACATCCGCCGTGCTTCAACGACTGCCGTGAC
ATCATCCAGCGCATGCATCTCCGCAATACGAGCTGCTC

AGCGGACCGACGCGTACGCGGCCGCTCGAG – GFP Tag – GTTTAA

Protein Sequence: >MG225826 representing NM_010309
 Red=Cloning site Green=Tags(s)

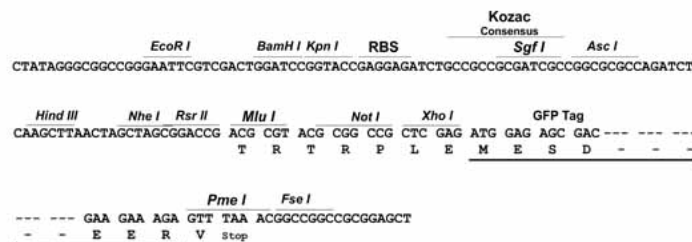
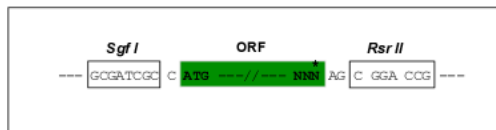
MGMFNCLHGNMMSGQHDIPPEVGEQPEQEPLEAPGAAAPGAGAGPAEEMATEPDSEPSNNEPVPDETGSE
 ISGPPEDSKSDIQSPCQAFEEVVRVGGDYSPPPEEAMPFETQQPSLGDFWPTLEQPGPSGTPSGLQAFNPA
 ILEPGTPTGASPLGAYTPPPEEAMPFEFNEPAQGDHSQPPLQVPDLAPGGPEALVPRALPAEPGNIRFE
 NAGFREDYSPPPEESVVPFQVGGEEFGDSSPPPGLPRVIPQIGIGGEFPTVAVPSALCLAPAENAPPLWVR
 GAIDRPFREAVRSPPNFACDSPPMEITRPLLEIGRASIGVDDDTAVNMDSPPIASDGPPIEVSGAPDKSE
 CAERPPVEREAAEMEGSPTTATAVEGKVPSPERGDGSSTQPEAMDAPAAQAVSTGSDAGAPTDASML
 TDSQSDAGEDGTAPGTPSDLQSDPEELEAPAVRADPDGGAAPVAPATPAESESESGSRDPAEPASEAVP
 ATTAESASGAAPVTQVEPAAAAVSATLAEPAAARAAPITPKPTTRAVPSARAHPAAGAVPGAPAMSASAR
 AAAARAAYAGPLVWGARSLSATPAARASLPARAAAAARAASAARAVAAGRSASAAPSRAHLRPPSPEIQV
 ADPPTPRPPRPRTAWPKYERGRSCCRYEASSGICEIESSDSEEGATGCFQWLLRRNRPLRSHTV
 GSNPVRNFFTRAFGSCFGLSECTRSRSLSPGKAKDPMEEERRKQMRKEAIEMREQRADKKRSLIDKQLE
 EEKMDYMCTHRLLLL GAGESGKSTIVKQMRILHVNGFNGEGGEDPQAARSNSDGEKATKVQDIKNNLKE
 AIETIVAAMSNL VPPVELANPENQFRVDYIL SVMNVPNFDFPPEFYEHAKALWEDEGVRACYERSNEYQL
 IDCAQYFLDKIDVIKQADYVPSDQDLLRCRVL TSGIFETKFQVDKVNFMFVGGQORDERRKWIQCNDV
 TAIIFVVAASSYVMVIREDNQTNRLQEALNLFKSIWNNRWLRTISVILFLNKQDLLAEKVLGKSKIEDY
 FPEFARYTTPEDATPEPGEPRVTRAKYFIRDEFRLRISTASGDGRHYCYPHFTCAVDTENIRRVFNDCRD
 IIQRMHLRQYELL

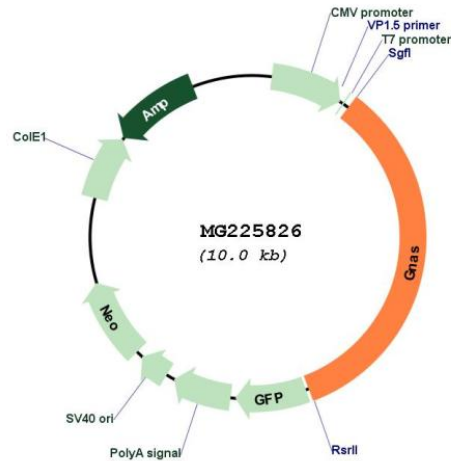
SGPTRRRLE - GFP Tag - V

Restriction Sites: SgfI-RsrII

Cloning Scheme:

Cloning sites used for ORF Shuttling:



Plasmid Map:


ACCN:	NM_010309
ORF Size:	3399 bp
OTI Disclaimer:	The molecular sequence of this clone aligns with the gene accession number as a point of reference only. However, individual transcript sequences of the same gene can differ through naturally occurring variations (e.g. polymorphisms), each with its own valid existence. This clone is substantially in agreement with the reference, but a complete review of all prevailing variants is recommended prior to use. More info
OTI Annotation:	This clone was engineered to express the complete ORF with an expression tag. Expression varies depending on the nature of the gene.
Components:	The ORF clone is ion-exchange column purified and shipped in a 2D barcoded Matrix tube containing 10ug of transfection-ready, dried plasmid DNA (reconstitute with 100 ul of water).
Reconstitution Method:	<ol style="list-style-type: none"> 1. Centrifuge at 5,000xg for 5min. 2. Carefully open the tube and add 100ul of sterile water to dissolve the DNA. 3. Close the tube and incubate for 10 minutes at room temperature. 4. Briefly vortex the tube and then do a quick spin (less than 5000xg) to concentrate the liquid at the bottom. 5. Store the suspended plasmid at -20°C. The DNA is stable for at least one year from date of shipping when stored at -20°C.
RefSeq:	NM_010309.4 , NP_034439.2
RefSeq Size:	3775 bp
RefSeq ORF:	3402 bp
Locus ID:	14683
UniProt ID:	Q6R0H7
Cytogenetics:	2 97.89 cM

Gene Summary:

This locus has a highly complex imprinted expression pattern. It gives rise to maternally, paternally, and biallelically expressed transcripts that are derived from four alternative promoters and 5' exons. Some transcripts contain a differentially methylated region (DMR) at their 5' exons, which is commonly found in imprinted genes and correlates with transcript expression. This gene has an antisense transcript. One of the transcripts produced from this locus, and the antisense transcript, are both paternally expressed noncoding RNAs, and may regulate imprinting in this region. In addition, one of the transcripts contains a second overlapping ORF, which encodes a structurally unrelated protein - Alex. Alternative splicing of downstream exons is also observed, which results in different forms of the stimulatory G-protein alpha subunit, a key element of the classical signal transduction pathway linking receptor-ligand interactions with the activation of adenylyl cyclase and a variety of cellular responses. Additional transcript variants have been found for this gene, but the full-length nature and/or biological validity of some variants have not been determined. [provided by RefSeq, Jun 2015]