

Product datasheet for **MG225819**

Nfatc2 (NM_001136073) Mouse Tagged ORF Clone

Product data:

Product Type:	Expression Plasmids
Product Name:	Nfatc2 (NM_001136073) Mouse Tagged ORF Clone
Tag:	TurboGFP
Symbol:	Nfatc2
Synonyms:	AI607462; NF-ATc2; NF-ATp; NFAT1; NFAT1-D; Nfatp
Mammalian Cell Selection:	Neomycin
Vector:	pCMV6-AC-GFP (PS100010)
E. coli Selection:	Ampicillin (100 ug/mL)



[View online »](#)

ORF Nucleotide Sequence:

>MG225819 representing NM_001136073
 Red=Cloning site Blue=ORF Green=Tags(s)

TTTTGTAATACGACTCACTATAGGGCGGCCGGGAATTCGTCGACTGGATCCGGTACCGAGGAGATCTGCC
 GCC**CGGATCGCC**

ATGGACGTCCCGAGCCGACGCCGACCCCGATGGCGGGGACGGCCCGCCACGAGCCCGGGGAGCT
 CCCAAGACGAGCTGGACTTTTCCATCCTCTCGATTATGACTATCTGAACCCTATCGAAGAAGAACCGAT
 CGCACATAAGGCCATCAGCTCACCTCCGGACTCGCATACCCGGATGATGTCCTGGACTATGGCCTCAAG
 CCATGCAACCCCTTGCCAGTCTCTCTGGCGAGCCCCCTGGCCGGTTCGGAGAGCCGGATAGTATAGGGT
 TCCAGAATTTCTGAGCCCGGTCAAGCCAGCAGGGGCTTCGGGCCGAGCCCTCGGATCGAGATCACTCC
 ATCCCACGAACTGATGCAGGCAGGGGGGCCCTCCGTGGGAGAGACGCCGGCTGTCCCCGAGCAGCCG
 GCCCTGGCCCTGGCCGGCTGGCCGCCAGCCGAGGTTACACTGCCCGTGCCCGCTACGAGGGCTACC
 GCGAGCCGCTTTGCTTGAGCCCCGCTAGCAGCGGCTCCTCTGCCAGCTTCATTTCTGACACCTTCTCCCC
 CTACACCTCGCCCTGCGTCTACCCAATAACGCCGGGCCGACGACCTGTGTCCCAAGTTTCAAACATC
 CCTGCTCATTATCCCCAGAACCTCTCCAATAATGTCACCTCGAACCAGCCTCGCCGAGGACAGCTGCC
 TGGGCCGACACTCGCCCGTGCCCGTCCGGCATCCCGCTCCTCCTCACCCGGTGCCAAGCGGAGGCATTC
 GTGCGCAGAGGCTTTGGTTGCTCCTCTGCCCGCAGCCTCACCCAGCGCTCCCGGAGCCCTCGCCACAG
 CCCTCGCCTCACGTGGCCTGCAGGACGACAGCATCCCGCTGGGTACCCCCACGCGCCGGCTCTGCTG
 TTCTCATGGATGCCCTCAACACCTGGCCACCGACTCGCCCTGCGGGATCCCTCCAAGATATGGAAGAC
 CAGTCTGACCCGACGCTGTGTCCACCCTCCGTCCAAGGTGGCTGGCCGCCACATCTACCCTACT
 GTGGAGTTCTGGGGCCATGTGAGCAGGAGGAGAGGAATTCGCTCCAGAGTCCATCCTGTGGTAC
 CACTACTTGGCCCAAGCAGTTGGTGGCCGATTCCCATCTGCAGCATCCCTGTGACTCATCCCTCCC
 ACCACTCGAGTGGCCACTCTCCAATCAGTCGGGCTCCTATGAGCTACGGATTGAGGTCCAACCCAAGCCC
 CATCACCGGGCCACTATGAGACGGAGGCGAGCCGTGGCGCTGTCAAAGCCCAACAGGAGGACACCCTG
 TGGTGCAGCTCCACGGCTACATGGAGAACAAGCCTCTGGGGCTTCAGATCTTCATTGGGACAGCAGATGA
 GAGGATCCTTAAGCCGCACGCTTCTACCAAGTACACAGGATCACTGGGAAAACGGTACCACCACGAGC
 TATGAGAAGATCGTAGGCAACACCAAGTCTGGAGATCCCTGGAGCCAAAGAACAACATGAGAGCCA
 CCATCGACTGTGCAGGCATCCTGAAGCTCCGAAACGCTGACATCGAGCTGCGGAAGGGGAGACGGACAT
 CGGCAGGAAGAACACGCGTGTGGCCTGGTGTTCGCGTGCACGTCCCAGAGCCAGTGGGCGCATCGTC
 TCCCTGCAGGCTGCGTCCAACCCATCGAGTGTCTCAGCGCTCTGCCACGAGCTGCCATGGTGGAGA
 GACAAGACATGGACAGCTGCCTGGTCTACGGGGCCAGCAGATGATCCTCACGGGCCAGAATTCACAGC
 GGAGTCCAAGTTGTGTTTCATGGAGAAGACTACAGATGGGACGAGATTTGGGAGATGGAAGCTACGGTG
 GATAAAGACAAGAGCCAGCCTAACATGCTTTTTGTTGAGATCCCCGAGTATCGGAACAAGCACATCCGCG
 TGCCCGTGAAAGTCAACTTCTACGTCAACAACGAAAGAGGAAACGAAAGTACGCCACAGCACTTTACCTA
 CCACCCAGTCCCTGCCATCAAGACAGAGCCAGCGATGAGTATGAACCATCTTTGATCTGCAGCCCCGCC
 CATGGAGGCTGGGGAGCCAGCCATATTACCCACAGCACCAATGCTGGCCGAGTCCCCCTCCTGCCTTG
 TGGTACCATGGCCCCCTGCCAACAGTTCGGCTCGGGCTCTCATCCCCGATGCTGCTACCAACAGCA
 GAGCCCCGAGCTGCCCTTACCAGAGAAGCAAGAGCCTGAGTCCCGGCTGCTGGGCTACCAGCAGCCG
 TCCTCCTGGCAGCACCTTGGGTCTGGCTGATGCCACCCTCTGTGCTGGTGCATGCTGGTTCTCAGG
 GGCAGGGGAGGGCTCCACCCTGCCACACATCCTCGGCCAGCCAGCAGGCTCACCCGTGATCCACTA
 CTCACCCACCAACCAGCAGTTCGCGGTGGGGTACCAGGAGTTCAGCATATCATGACTGTGAAAAC
 TTCGGCCCCAGCTCTGCCAGGCTGGCCCGCTCCCATCAACCAAGGTCAGAGGCTGAGCCCGGGCGCT
 ACCCCACAGTCAACAACAGACTGCCCGAGCCAAAGAGCTGCCAAAACGGACCCAGTGACCAGAA
 GGAAGCTCTGCCACGGGAGTGACCGTCAAACAGGAACAGAACCTGGACCAGACCTACCTGGATGACGAG
 TTGATAGACACACCTTAGCTGGATACAAAACATATTA

AG**CGGACCG**ACGCGTACGCGGCCGCTCGAG – GFP Tag – GTTTAA

Protein Sequence: >MG225819 representing NM_001136073
 Red=Cloning site Green=Tags(s)

```
MDVPEPQDPDPGGDGPHEPGGSPQDELDF SILFDYDYLNPIDEEPIAHKAISSPSGLAYPDDVLDYGLK
PCNPLASLSGEPGRFGEPDSIGFQNFLSPVKPAGASGSPRIEITPSHELMQAGGALRGRDAGLSPEQP
ALALAGVAASPRFTLPVPGYEGYREPLCLSPASSGSSASFISDTFSPYTPCVSPNNAGPDDLCPQFQNI
PAHYSPRTSPI MSPRTSLAEDSCLGRHSPVPRPASRSSSPGAKRRHS CAEALVAPLPAAS PQRSRSPSQ
PSPHVALQDSDIPAGYPPTAGSAV LMDALNLTATDSPCGIPSKIWK TSPDPTPVSTAPSKAGLARHIYPT
VEFLGPCQEERNSAPESILLVPPTWPKQLVPAIPIC SIPVTASLPPLEWPLSNQSGSYELRIEVQPKP
HHRAHYETEGSRGAVKAPTGGHPVVQLHGYMENKPLGLQIFIGTADERILKPHAFYQVHRITGKTVTTTS
YEKIVGNTKVL EIPLEPKNNMRATIDCAGILKLRNADIELRKGETDIGRKNTRVRLVFRVHVPEPSGRIV
SLQAASNPIECSQRSAHELPMVERQDMSCLVYGGQMIL TGQNF TAESKVVFMKTTDGGQIWEMEATV
DKDKSQPNMLFVEIPEYRNKHIRVPVKVNFYVINGKRKRSQPQHFTYHPVPAIKTEPSDEYEPSLICSPA
HGGLGSQPYYPQHPLAESPSCLVATMAPCQQFRSGLSSPDARYQQQSPAALYQRSKSLSPGLLGYQQP
SLLAAPLGLADAHRSVLVHAGSQGQGGSTL PHTSSASQQASPV IHYSP TNQQLRGGGHQEFQHIMYCEN
FGPSSARPGPPPINQGQRLSPGAYPTVIQQQTAPSQRAAKNGPSDQKEALPTGVTVKQEQLDQTYLDDE
LIDTHLSWIQNIL
```

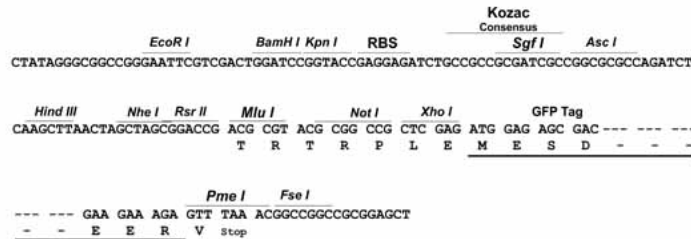
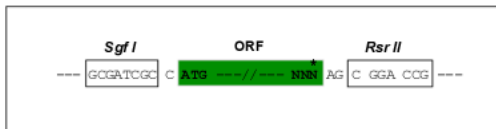
SGPTRRRLE - GFP Tag - V

Chromatograms: https://cdn.origene.com/chromatograms/ja1545_a09.zip

Restriction Sites: SgfI-RsrII

Cloning Scheme:

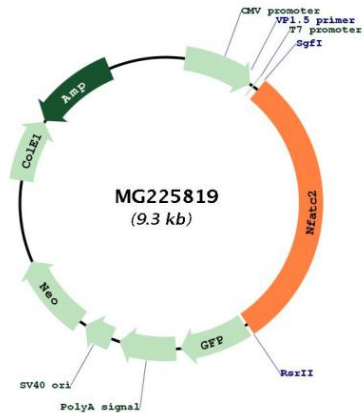
Cloning sites used for ORF Shuttling:



ACCN: NM_001136073

ORF Size:	2769 bp
OTI Disclaimer:	The molecular sequence of this clone aligns with the gene accession number as a point of reference only. However, individual transcript sequences of the same gene can differ through naturally occurring variations (e.g. polymorphisms), each with its own valid existence. This clone is substantially in agreement with the reference, but a complete review of all prevailing variants is recommended prior to use. More info
OTI Annotation:	This clone was engineered to express the complete ORF with an expression tag. Expression varies depending on the nature of the gene.
Components:	The ORF clone is ion-exchange column purified and shipped in a 2D barcoded Matrix tube containing 10ug of transfection-ready, dried plasmid DNA (reconstitute with 100 ul of water).
Reconstitution Method:	<ol style="list-style-type: none">1. Centrifuge at 5,000xg for 5min.2. Carefully open the tube and add 100ul of sterile water to dissolve the DNA.3. Close the tube and incubate for 10 minutes at room temperature.4. Briefly vortex the tube and then do a quick spin (less than 5000xg) to concentrate the liquid at the bottom.5. Store the suspended plasmid at -20°C. The DNA is stable for at least one year from date of shipping when stored at -20°C.
RefSeq:	NM_001136073.2 , NP_001129545.1
RefSeq Size:	6651 bp
RefSeq ORF:	2772 bp
Locus ID:	18019
Cytogenetics:	2 88.91 cM
Gene Summary:	Plays a role in the inducible expression of cytokine genes in T-cells, especially in the induction of the IL-2, IL-3, IL-4, TNF-alpha or GM-CSF. Promotes invasive migration through the activation of GPC6 expression and WNT5A signaling pathway.[UniProtKB/Swiss-Prot Function]

Product images:



Circular map for MG225819