

Product datasheet for **MG225808**

Gpr155 (NM_001080707) Mouse Tagged ORF Clone

Product data:

Product Type:	Expression Plasmids
Product Name:	Gpr155 (NM_001080707) Mouse Tagged ORF Clone
Tag:	TurboGFP
Symbol:	Gpr155
Synonyms:	1110017O10Rik; AW319992; DEPDC3; F730029F15Rik; PGR22
Mammalian Cell Selection:	Neomycin
Vector:	pCMV6-AC-GFP (PS100010)
E. coli Selection:	Ampicillin (100 ug/mL)



[View online »](#)

ORF Nucleotide Sequence:

>MG225808 representing NM_001080707
 Red=Cloning site Blue=ORF Green=Tags(s)

TTTTGTAATACGACTCACTATAGGGCGGCCGGGAATTCGTCGACTGGATCCGGTACCGAGGAGATCTGCC
 GCC**GCGATCGCC**

ATGGATTCTTATTCTCAGCAAAGAACTCAACGCTTGCTGGTGATATGAATGCGACTTGGCTGCCTCTC
 ATGGATTTAATGCCACCGCGATCCACCTTCGATGTCGATAACCCGGCTTCCCGCCTTACTGGAGTG
 CTTTGGCATAGTCCTTTGTGGCTACATAGCAGGAAGGGCCAATATCATAACCTCAACACAGGCCAAAGGA
 CTGGGGAATTCGCTCCAGATTGCCCTTCCAGCCTTATTATTCAAAAACATGGTTGTGCTTAATTTTT
 CCAACGTGGACTGGGCTTTCTCTACAGCGTCTTAATTGGCAAAGCCTCCGTGTTTTTCATTGTGTGTGT
 ATTAACCTTATTGGTGGCAGTCTGAGAGCCGGTTAGCAAAGCTGGACTATCCCTATTTTTGCTACA
 CAGAGTAATGACTTTGCTTTGGGATACCCTATAGTTGAAGCTCTGTACCAATCTACATATCCAGAGTATC
 TGCAGTACATTTATTTGGTGGCACCAATATCTCTTATGATGCTAAACCCATAGGGTTTATCTTCTGTGA
 AATCCAGAAGTCAAAGACACTCAAATGCTTCTCAAAATAAAGCAAAAATTGTGGGACTTGGATTCTA
 CGCGTGTACAGAACCCGATAGTATTTATGGTCTTTGTTGGCATTGCCTTCAATTTTATTCTTGATAAAA
 AGATCCCAGTATATATGGAAAACTTCTGGATGGGCTTGCAAATTCCTTCTCTGGATCAGCCCTGTTTTA
 TCTTGGTCTGACCATGGTAGGAAAAATCAGGCGACTGAAGAAAGTCGGCGTTTGTGGTTCTTACTCTTCTC
 ATCACAGCCAACTCCTGGTGTGCCCTCCTGTGCAGAGAAATGGTGGAACTCCTGGACAAGGGGGACA
 GCGTAGTGAACCATACAAGCCTGTCCAATATGCGTTTCTATATGGTGTCTTCCCTGTGGCTCCAGGAGT
 GGCTATCTTTGCAACACAGTTCAACATGGAAGTGGAGATTATAACCTCAGGCATGGTAATAAGTACATTT
 GTGTCTGCTCCAATCATGTATGTTTCTGCCTGGTTATTAACCTTCTACCATGGATGCCAAGCCACTGG
 CGTATGCCATTCAGAATGTTAGCTTTGATATAAGTATTATCAGCCTGGTCTCCTTGATCTGGTCCCTGTC
 TATTCCTCTCTTGAGTAAGAAATATAAGCAGCTCCCACATATGCTCACAGCGAACTTACTCATCGCTCAG
 ACTATTGTTTGTGCTGGAATGATGATATGGAATTTTGTAAAGAAAAAATTTTGTGGACAAATTTTGG
 TGTTTGTTTTATTGTACAGCTCCCTGTACAGCACCTATCTGTGGACAGGCCTTCTAGCAGTTTCTTTGTT
 TCTTTAAAGAAGCGGAGAGCGTTTCCAGCTCCCGGTGGGAATCATCATCATCTCTGGCTGGGGGATCCCT
 GCTCTCCTTGTGGGCGTCTTCTGATAACTGGAAAACACAACGGAGACAGCATTGACTCAGCCTTCTTTT
 ATGGAAAAGAGCAGATGATCACCACGGCAGTACCCTGTTCTGCAGCATTCTCATAGCTGGGGTGTCACT
 CATGTGCATGAACCGCACCAAGCTGGTCACTACGAAGTTTCGGCCAGTCTCAGAACCACAAACCA
 GTAGAGCCTGGAAGCACTGCGTTTGAGGAGAACCAGCACCAACAAATGAACCAGAACTTCCCAAGTT
 CTATCCCAGAAACAAGTTGCTGTTCTTGCTCCTTGGGAAATGGTGAATTACGCTGCCCATCCATAGAGCC
 AGTAACGAACTCAAGTGCTAGTGGGCTATGCCTTCTTCTTTGAAAAACCGACCACTGTGTGAGCCGT
 TGTGACTCCCAGAGCTGCATCCTCGCCAGGAAGAAGAGCAGTACCTGCAGAGCGGAGACCCACAGCTGA
 CCCGGCACGTCTGTTGTGCTTGTGCTTATCATCGGCCCTTTTGCTAATCTCTCCAGCTGCCTGTGGTG
 GTTGTTC AACACGAGACGGGACGGCTCTATGTTGAATTACAGTTTTTCTGTGCCGTGTTAACTTTGGC
 CAGGTGGGTGCTGCGTAT

AG**CGGACCG**ACGCGTACGCGGCCGCTCGAG - GFP Tag - GTTTAA

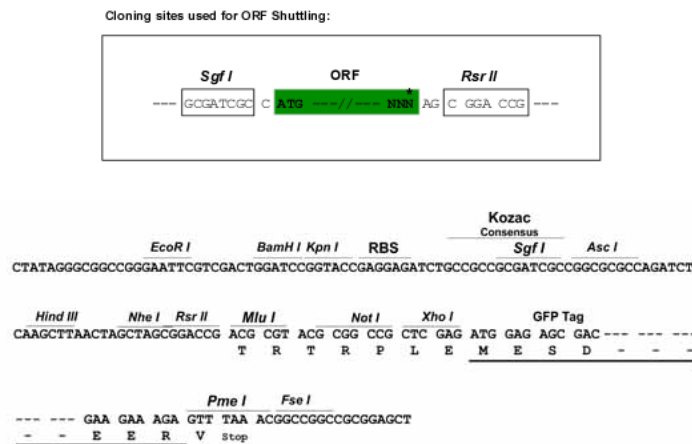
Protein Sequence: >MG225808 representing NM_001080707
 Red=Cloning site Green=Tags(s)

```
MDSYFSAKNSTLAGDMNATWPASHGFNATGDPPSMSITRFLPALLECFGIVLCGYIAGRANIITSTQAKG
LGNFVSRFALPALLFKNMVLNFSNVDWAFLYSVLIGKASVFFIVCVLTLLVASPESRFKAGLFPFIFAT
QSNDFALGYPIVEALYQSTYPEYLQYIYLVAPISLMMLNPIGFIFCEIQKSKDTQNASQNKAKIVLGLFL
RVLQNPPIVFMVFVGI AFNFILDKKIPVYMFNLDGLANSFSGSALFYLGLTMVGIKIRRLKSAFVLTLL
ITAKLLVPLLCREMVLLDKGDSVVNHTSLSNYAFLYGVFPVAPGVAIFATQFNMEVEIITSGMISTF
VSAPIMYVSAWLLTFPTMDAKPLAYAIQNVSFDISIISLVSLIWSLSILLSSKKYKQLPHMLTANLLIAQ
TIIVCAGMMIWNFVKEKNFVQGILVFLVYSSLYSTYLWTGLLAVSLFLLKKRESVQLPVGIIISGWGIP
ALLVGVLLITGKHNGDSIDSAFFYGKEQM TTA VTLFCSIL IAGVSLMCMNRTTQAGHYEGFGSQNHKP
VEPGSTAFEENPAPTNEPELFPSSIPETSCCSCSLGNGELRCPSIEPVTNSSASGMPMPSSFEKTDHCVSR
CDSQSCILAQEEEQYLQSGDPQLTRHVLLCLLLIIGL FANLSSCLWFLNHETGRLYVELQFFCAVFNFG
VQGAAY
```

SGPTRRRLE - GFP Tag - V

Restriction Sites: SgfI-RsrII

Cloning Scheme:



ACCN: NM_001080707

ORF Size: 2118 bp

OTI Disclaimer: The molecular sequence of this clone aligns with the gene accession number as a point of reference only. However, individual transcript sequences of the same gene can differ through naturally occurring variations (e.g. polymorphisms), each with its own valid existence. This clone is substantially in agreement with the reference, but a complete review of all prevailing variants is recommended prior to use. [More info](#)

OTI Annotation: This clone was engineered to express the complete ORF with an expression tag. Expression varies depending on the nature of the gene.

Components: The ORF clone is ion-exchange column purified and shipped in a 2D barcoded Matrix tube containing 10ug of transfection-ready, dried plasmid DNA (reconstitute with 100 ul of water).

Reconstitution Method:

1. Centrifuge at 5,000xg for 5min.
2. Carefully open the tube and add 100ul of sterile water to dissolve the DNA.
3. Close the tube and incubate for 10 minutes at room temperature.
4. Briefly vortex the tube and then do a quick spin (less than 5000xg) to concentrate the liquid at the bottom.
5. Store the suspended plasmid at -20°C. The DNA is stable for at least one year from date of shipping when stored at -20°C.

RefSeq: [NM_001080707.1](#), [NP_001074176.1](#)

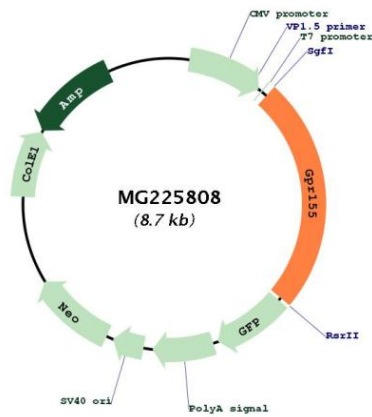
RefSeq Size: 2625 bp

RefSeq ORF: 2121 bp

Locus ID: 68526

Cytogenetics: 2 C3

Product images:



Circular map for MG225808