

## Product datasheet for **MG225762**

### Traf3 (NM\_001048206) Mouse Tagged ORF Clone

#### Product data:

|                           |  |
|---------------------------|--|
| Product Type:             | Expression Plasmids                              |
| Product Name:             | Traf3 (NM_001048206) Mouse Tagged ORF Clone      |
| Tag:                      | TurboGFP   |
| Symbol:                   | Traf3  |
| Synonyms:                 | AI528849; amn; CAP-1; CD40bp; CRAF1; LAP1; T-BAM |
| Mammalian Cell Selection: | Neomycin   |
| Vector:                   | pCMV6-AC-GFP (PS100010)                          |
| E. coli Selection:        | Ampicillin (100 ug/mL)                           |



[View online »](#)

**ORF Nucleotide Sequence:**

>MG225762 representing NM\_001048206  
 Red=Cloning site Blue=ORF Green=Tags(s)

TTTTGTAATACGACTCACTATAGGGCGGCCGGAATTCGTCGACTGGATCCGGTACCGAGGAGATCTGCC  
 GCC**CGCATCGCC**

ATGGAGTCAAGCAAAAAGATGGATGCTGCTGGCACACTGCAGCCTAACCCACCCCTAAAGCTGCAGCCTG  
 ATCGCGCGCAGGGTCCGTGCTCGTGCCGAGCAAGGAGGCTACAAGGAGAAGTTTGTGAAGACGGTGGA  
 AGACAAGTACAAGTGCAGAGAAGTCCCGCCTGGTCTGTGCAACCCGAAGCAGACGGAGTGTGCCACCGG  
 TTCTGCGAGAGCTGCATGGCCGCCCTGCTGAGCTCCTCCAGTCCAAAATGCACAGCGTGCCAAGAAAGCA  
 TCATCAAAGACAAGGTGTTAAGGATAATTGCTGCAAGAGAGAGATTCTGGCCCTCAGGTCTACTGTGCG  
 GAATGAAGGCAGAGGTTGTGCGGAGCAGCTGACTCTGGGACATCTGCTGGTGCACCTAAAAATGAATGT  
 CAGTTTGAGGAACCTCCCTGTCTGCGTGCCGACTGCAAAGAAAAAGTACTGAGAAAAGACTTGGGGGATC  
 ACGTGGAAAAGGCTGTAATACCGCGAGGCCACGTGCAGTCACTGCAAGAGCCAAGTCCCATGATCAA  
 ACTGCAGAAACATGAAGACACAGATTGTCCCTGTGTGGTGGTATCCTGCCCTCACAAGTGCAGCGTTCAG  
 ACTCTTCTAAGGAGTGAAGGTACAACCCAGCAGATCAAGGCCATGAGGCCAGCTCCGCGGTACAGCAGG  
 TGAACCTGCTGAAGGAGTGGAGCAACTCCCTGGAGAAGAAGGTTCCCTGCTGCAGAATGAAAGTGTGA  
 GAAAAACAAGAGCATCAAAGCCTGCACAACAGATCTGCAGCTTTGAGATCGAGATTGAGAGGCAGAAG  
 GAGATGCTCCGAAACAACGAGTCCAAGATCCTTCCCTGCAGCGGGTAATCGACAGCCAAGCAGAGAAAAC  
 TGAAAGAACTGGACAAGGAGATCCGTCCCTTCCGGCAGAACTGGGAGGAAGCGGACAGCATGAAGAGCAG  
 TGTGGAGTCCCTCCAGAACCAGTACTGAGCTGGAGAGCGTAGACAAAAGTGGGGGACAGCGGCTCGC  
 AACACAGGCTTGTGGAGTCCAGCTGAGCCGGCATGACCAGATGTTGAGTGTTCATGACATCCGCTTGG  
 CCGACATGGACCTGCGGTTCCAGTCTCGAGACCAGTACAACGGGGTGTGATCTGGAAGATCCG  
 TGACTACAAGCGCCGGAAGCAGGAGGCCGTATGGGGAAGACCCTGTCTCTACAGCCAGCCTTTCTAC  
 ACAGGTTATTTGGCTATAAGATGTGTGCCAGGTCTACCTGAATGGGGACGGAATGGGGAAGGGACAC  
 ACTTGTGCTGTTTTTTGTCAATTATGCGTGGAATAATGATGCTCTGTTGCCATGGCCGTTCAAGCAGAA  
 AGTGACACTTATGCTGATGGATCAGGGTCTCTCGCCGTATCTGGGAGATGCGTTCAAGCCTGACCCC  
 AACAGCAGCAGCTTCAAGAAACCCAGGAGAGATGAATATCGCCTCTGGCTGCCAGTCTTTGTCGCCC  
 AAAGTGTCTAGAGAACGGGACGTATATTAAGATGATACAATCTTTATTAAGGTATAGTGATACCTC  
 GGATCTGCCTGACCCC

**ACGCGTACGCGGCCGCTCGAG - GFP Tag - GTTTAA**

**Protein Sequence:**

>MG225762 representing NM\_001048206  
 Red=Cloning site Green=Tags(s)

MESSKKMDAAGTLQPNPPLKLPDRGAGSVLVEQGGYKEKFKVTKVEDKYKCEKCRLLVLCNPKQTECGHR  
 FCESCMAALLSSSPKCTACQESI IKDKVFKDNCCKREILALQVYCRNEGRGCAEQLTLGHLLVHLKNEC  
 QFEELPCLRADCKEKVLRKDLRDHVEKACKYREATCSHCKSQVPMIKLQKHEDTDCPCVVVSCPHKCSVQ  
 TLLRSEGNTQQIKAHEASSAVQHVNLLKEWSNSLEKKVSLQNESVEKNKSIQSLHNQICSEIEIERQK  
 EMLRNNEKILHLQRVIDSQAELKELDKAIRPFRQNWEEADSMKSSVESLQNRVTELESVDKSAGQAAR  
 NTGLLESQLSRHDQMLSVHDIRLADMDLRFQVLETASYNGVL IWKIRDYKRRKQEAVMGKTL SLYSQPFY  
 TGYFGYKMCARVYLNQDGMGKTHLSLFFVIMRGEYDALLPWPFKQKVTMLMDQGSRRHLGDAFKPDP  
 NSSFFKPTGEMNIASGCPVFAQTVLENGTYIKDDTIFIKVIVDTSDL PDP

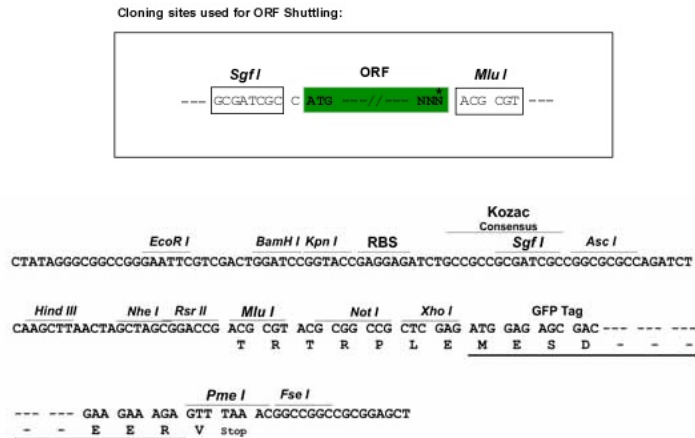
**TRTRPLE - GFP Tag - V**

**Chromatograms:**

[https://cdn.origene.com/chromatograms/ja2328\\_f04.zip](https://cdn.origene.com/chromatograms/ja2328_f04.zip)

**Restriction Sites:**

SgfI-MluI

**Cloning Scheme:**


**ACCN:** NM\_001048206

**ORF Size:** 1626 bp

**OTI Disclaimer:** Due to the inherent nature of this plasmid, standard methods to replicate additional amounts of DNA in E. coli are highly likely to result in mutations and/or rearrangements. Therefore, OriGene does not guarantee the capability to replicate this plasmid DNA. Additional amounts of DNA can be purchased from OriGene with batch-specific, full-sequence verification at a reduced cost. Please contact our customer care team at [custsupport@origene.com](mailto:custsupport@origene.com) or by calling 301.340.3188 option 3 for pricing and delivery.

The molecular sequence of this clone aligns with the gene accession number as a point of reference only. However, individual transcript sequences of the same gene can differ through naturally occurring variations (e.g. polymorphisms), each with its own valid existence. This clone is substantially in agreement with the reference, but a complete review of all prevailing variants is recommended prior to use. [More info](#)

**OTI Annotation:** This clone was engineered to express the complete ORF with an expression tag. Expression varies depending on the nature of the gene.

**Components:** The ORF clone is ion-exchange column purified and shipped in a 2D barcoded Matrix tube containing 10ug of transfection-ready, dried plasmid DNA (reconstitute with 100 ul of water).

**Reconstitution Method:**

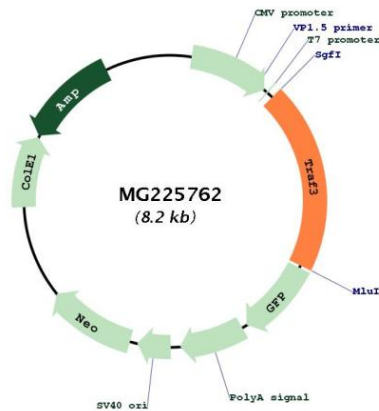
1. Centrifuge at 5,000xg for 5min.
2. Carefully open the tube and add 100ul of sterile water to dissolve the DNA.
3. Close the tube and incubate for 10 minutes at room temperature.
4. Briefly vortex the tube and then do a quick spin (less than 5000xg) to concentrate the liquid at the bottom.
5. Store the suspended plasmid at -20°C. The DNA is stable for at least one year from date of shipping when stored at -20°C.

**RefSeq:** [NM\\_001048206.1](#), [NP\\_001041671.1](#)

**RefSeq Size:** 6906 bp  
**RefSeq ORF:** 1629 bp  
**Locus ID:** 22031  
**Cytogenetics:** 12 60.94 cM  
**Gene Summary:**

Regulates pathways leading to the activation of NF-kappa-B and MAP kinases, and plays a central role in the regulation of B-cell survival. Part of signaling pathways leading to the production of cytokines and interferon. Required for normal antibody isotype switching from IgM to IgG. Plays a role T-cell dependent immune responses. Plays a role in the regulation of antiviral responses. Is an essential constituent of several E3 ubiquitin-protein ligase complexes. May have E3 ubiquitin-protein ligase activity and promote 'Lys-63'-linked ubiquitination of target proteins. Inhibits activation of NF-kappa-B in response to LTBR stimulation. Inhibits TRAF2-mediated activation of NF-kappa-B. Down-regulates proteolytic processing of NFKB2, and thereby inhibits non-canonical activation of NF-kappa-B. Promotes ubiquitination and proteasomal degradation of MAP3K14.[UniProtKB/Swiss-Prot Function]

**Product images:**



Circular map for MG225762