

Product datasheet for **MG225755**

Sele (NM_011345) Mouse Tagged ORF Clone

Product data:

Product Type:	Expression Plasmids
Product Name:	Sele (NM_011345) Mouse Tagged ORF Clone
Tag:	TurboGFP
Symbol:	Sele
Synonyms:	CD62E; E-selectin; Elam; ELAM-1; LECAM2
Mammalian Cell Selection:	Neomycin
Vector:	pCMV6-AC-GFP (PS100010)
E. coli Selection:	Ampicillin (100 ug/mL)



[View online »](#)

ORF Nucleotide Sequence:

>MG225755 representing NM_011345
 Red=Cloning site Blue=ORF Green=Tags(s)

TTTTGTAATACGACTCACTATAGGGCGGCCGGAATTCGTCGACTGGATCCGGTACCGAGGAGATCTGCC
 GCC**CGGATCGCC**

ATGAAAGCAACTGCTGGAGTCATGAATGCCTCGCCTTTCTCTGCTCTGTTTTGTTCTCCTCGCTG
 GAGAGAGCACAGCTTGGTACTACAATGCCTCCAGTGAGCTCATGACGTATGATGAAGCCAGTGCATACTG
 TCAGCGGGACTACACACATCTGGTGCCAATTCAGAAACAAGGAAGAGATCAACTACCTTAACCTCAATCTG
 AAACATTCACCGAGTTACTACTGGATTGGAATCAGAAAAGTCAATAACGTATGGATCTGGGTGGGACGG
 GGAAGCCTCTGACAGAGGAAGCTCAGAAGCTGGCTCCAGGTGAACCAAACAACAAGAAATGAGGA
 CTGTGTAGAGATTTACATCCAACGAACCAAGACTCGGGCATGTGAATGACGAGAGATGTAACAAAAAG
 AAGCTGGCTCTGTCTACACAGCTTCGTGTACCAATGCATCCTGCAGTGGTCATGGTGAATGCATAGAGA
 CCATCAATAGTTACACCTGCAAGTGCCACCCTGGCTTCTGGGACCCAAGTGTGAGCAAGCTGTGACTTG
 CAAACCACAGGAACACCCTGACTATGGAAGCCTGAACTGCTCCACCCGTTTCGGCCCTTCAGCTATAAT
 TCCTCCTGCTCCTTTGGCTGTAAAAGGGGCTACCTGCCAGCAGCATGGAGACCACCGTGCAGGTGTACGT
 CCTCTGGAGAGTGGAGTGCCTGCTCCAGCCTGCCATGTGGTTGAATGTGAAGCTTTGACCCACCTG
 CCACGGTATCAGGAAATGTTCTCAATCCTGGGAGCTACCCATGGAACACGACATGCACGTTTGACTGT
 GTGGAAGGGTACAGGCGAGTTGGAGCTCAGAATCTACAGTGTACCTCATCTGGCATCTGGGATAACGAGA
 CGCCATCATGAAAGCTGTGACCTGTGACGCCATCCCTCAGCCTCAGAATGGCTTTGTGAGCTGCAGCCA
 CTCAACAGCTGGAGAAGTTCGCTTAAAGTATCCTGTAACCTCACCTGTGAGCAGAGTTTACGTTGCAG
 GGGCCAGCGCAGGTTGAATGCAGCGCACAAAGGGCAGTGGACACCACAAATCCCAGTCTGCAAAGCTGCC
 AGTGTGAAGCCTTATCTGCGCCACAGCAGGGCAACATGAAATGTCTTCCAGTGCCTTCTGGACCTTTCCA
 AAATGGGTCCAGTTGTGAGTTCTCTGCGAAGAAGGATTTGAACCTGAAGGGATCAAGAAGACTTCAGTGT
 GGTCCAAGAGGGGAATGGGATAGCAAGAAGCCACGTGTTGAGCTGTGAAATGTGATGATGTCCCTCGGC
 CCCAGAATGGCGTCATGGAGTGTGCTCATGCTACTACTGGAGAATTCACCTACAAGTCTCATGTGCCTT
 TCAATGCAATGAGGGCTTTAGCTTGCATGGCTCAGCTCAACTGAGTGCACATCTCAGGAAAGTGGACC
 CAGGAAGTCCCCTCCTGCCAAGTGTACAATGTCCAAGCCTTGCAGTCCCGGAAAGATGAACATGAGCT
 GCAGCGGAACAGCAGTTTTCGGCACAGTGTGTGAGTTTACATGTCCTGATGATTGGACACTCAATGGATC
 TGCAGTTCTGACGTGTGGTGCACGGGACGCTGGTCTGGGATGCCGCTACCTGTGAAGCCCCAGTCAGC
 CCCACCCGTCCTTGGTAGTTGCACTTTCTGCGCAGGAACCTCACTCCTGACATCGTCTCATTGCTCT
 ACTTGTGATGAGATACTTTGGAAGAAAGCAAAGAAATTTGTTCTGCTAGCAGCTGCCAAGCCTTCA
 ATCGTTTGAAGAACTACCATGTGCCTTCTACAACGTC

ACGCGTACGCGGCCGCTCGAG – GFP Tag – GTTTAA

Protein Sequence:

>MG225755 representing NM_011345
 Red=Cloning site Green=Tags(s)

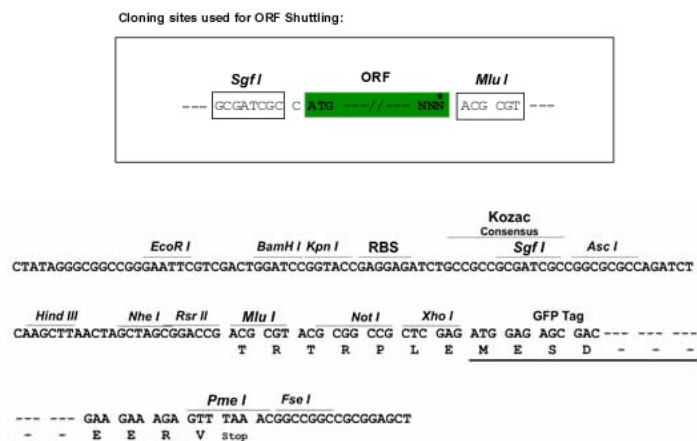
MKATAGVMNASRFLSALVFVLLAGESTAWYNNASSELMTYDEASAYCQRDYTHLVAIQNKEEINYLN
 SNLKHSPSYWIGIRKVNWVWVGTGKPLTEEAQNWAPGEPNNKQRNEDCVEIYIQRKDSGMWNDERCNK
 KLALCYTASCTNASCSGHGECIETINSYTCKCHPGFLGPNCEQAVTCKPQEHDPYDGLNCSHPFGPFSYN
 SSCSFGCKRGLPSSMETTVRCTSSGEWSAPAPACHVVECEALTHPAHGIRKSSNPGSYPWNTTCTFDC
 VEGYRRVGAQNLQCTSSGIWDNETPSCKAVTCDIIPQPQNGFVSCSHSTAGELAFKSSCNFTCEQSFTLQ
 GPAQVECSAQGWTPQIPVCKAVQCEALSAPQQGNMKCLPSASGPFQNGSSCEFSCEEFGELKGSRRLLQC
 GPRGEWDSKPKTCSAVKDDVPRPQNGVMECAHATTGFEFTYKSSCAFQCNESLHLSAQLLECTSQGKWT
 QEVPSCQVYQPSLDVPGKMMSCSGTAVFGTVCEFTCPDDWTLNGSAVLTGATGRWSGMPPTCEAPVS
 PTRPLVVALSAAGTSLLTSSLLYLLMRYFRKAKKFVPASSCQSLQSFENYHVPSYNV

TRTRPLE – GFP Tag – V

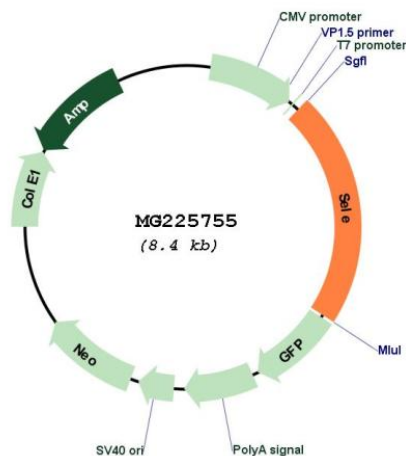
Restriction Sites:

SgfI-MluI

Cloning Scheme:



Plasmid Map:



ACCN: NM_011345
 ORF Size: 1857 bp

OTI Disclaimer:	The molecular sequence of this clone aligns with the gene accession number as a point of reference only. However, individual transcript sequences of the same gene can differ through naturally occurring variations (e.g. polymorphisms), each with its own valid existence. This clone is substantially in agreement with the reference, but a complete review of all prevailing variants is recommended prior to use. More info
OTI Annotation:	This clone was engineered to express the complete ORF with an expression tag. Expression varies depending on the nature of the gene.
Components:	The ORF clone is ion-exchange column purified and shipped in a 2D barcoded Matrix tube containing 10ug of transfection-ready, dried plasmid DNA (reconstitute with 100 ul of water).
Reconstitution Method:	<ol style="list-style-type: none"> 1. Centrifuge at 5,000xg for 5min. 2. Carefully open the tube and add 100ul of sterile water to dissolve the DNA. 3. Close the tube and incubate for 10 minutes at room temperature. 4. Briefly vortex the tube and then do a quick spin (less than 5000xg) to concentrate the liquid at the bottom. 5. Store the suspended plasmid at -20°C. The DNA is stable for at least one year from date of shipping when stored at -20°C.
RefSeq:	NM_011345.2 , NP_035475.1
RefSeq Size:	2912 bp
RefSeq ORF:	1860 bp
Locus ID:	20339
UniProt ID:	Q00690
Cytogenetics:	1 71.35 cM
Gene Summary:	Cell-surface glycoprotein having a role in immunoadhesion. Mediates in the adhesion of blood neutrophils in cytokine-activated endothelium through interaction with SELPLG/PSGL1 (PubMed:1375914). May have a role in capillary morphogenesis.[UniProtKB/Swiss-Prot Function]