

## Product datasheet for **MG225749**

### **Galc (NM\_008079) Mouse Tagged ORF Clone**

#### **Product data:**

Product Type:	Expression Plasmids
Product Name:	Galc (NM_008079) Mouse Tagged ORF Clone
Tag:	TurboGFP
Symbol:	Galc
Synonyms:	2310068B06Rik; A930008M05Rik; AW212969; AW413532; Gac; Gacy; twi; twitcher
Mammalian Cell Selection:	Neomycin
Vector:	pCMV6-AC-GFP (PS100010)
E. coli Selection:	Ampicillin (100 ug/mL)



[View online »](#)

**ORF Nucleotide Sequence:**

>MG225749 representing NM\_008079  
 Red=Cloning site Blue=ORF Green=Tags(s)

TTTTGTAATACGACTCACTATAGGGCGGCCGGGAATTCGTCGACTGGATCCGGTACCGAGGAGATCTGCC  
 GCC**CGGATCGCC**

ATGGCTAACAGCCAACCTAAGGCTTCCCAGCAACGCCAAGCAAAAGTCATGACCGCCGCCGGGCTCGG  
 CGAGCCGTGTTGCGGTGCCCTTATTGTTGTGTGCGCTGCTAGTGCCCGGTGGCGCTACGTGCTAGACGA  
 CTTCCGACGGGCTGGGCCGGGAGTTTCGATGGCATCGGCGCAGTCAGCGCGCGGGCAACCTCCCGGCTT  
 CTAGTAAATTACCCAGAGCCCTATCGTTCTGAAATACTGGATTATCTATTTAAGCCAAACTTTGGTGCTT  
 CTTTGCAATTCTAAAAGTGGAGATAGGTGGTATGGACAAACAACAGATGGCACTGAACCTCGCACAT  
 GCACTATGAGCTAGATGAGAATTATTTCCGAGGCTATGAGTGGTGGCTAATGAAGGAAGTAAGAAGCGG  
 AACCCAGATATTACTTATGGGTTGCCATGGTCATTCCCTGGATGGCTGGCAAGGCTTCAGCTGGC  
 CTTATGTAATCTTCAGCTCACTGCCTACTATGTTGAAGATGGATTTGGGTGCCAAGCATTATCATGA  
 CCTGGACATTGATTATATTGGGATTTGGAATGAAAGCCGTTTGACGCCAACTATATAAAGGAATTAAGA  
 AAAATGCTGGATTATCAAGGTCTCCAGCGAGTGAGAATCATAGCGAGCGATAATCTCTGGGAGCCGATTT  
 CCTCTTCCTTGCTGCTGGACCAGGAACTCTGGAAGGTGGTTGATGTTATAGGAGCTCACTATCCTGGAAC  
 CTACACAGTGTGGAATGCAAAGATGTCAGGGAAGAAGCTGTGGTCATCTGAAGATTTTAGCACTATCAAC  
 AGTAATGTTGGCGCAGGCTGTTGGAGTCGCATATTGAACCAGAATTACATCAATGGCAATATGACCTCCA  
 CAATTGCTTGAATTTGGTGGCTAGTACTATGAAGAGTTGCCTTATGGACGAAGTGGGTTGATGACGGC  
 CCAGGAGCCATGGAGTGGACATTATGTCGTAGCATCTCCTATCTGGGTATCAGCTCACACAACCCAGTTT  
 ACTCAACCAGGCTGGTATTACCTGAAGACAGTGGGCCATCTAGAGAAAGGAGGAAGTTATGTTGCTCTGA  
 CTGATGGCTTGGAAACCTCACCATCATCATTGAAACTATGAGTCATCAACATTCTATGTGTATACGGCC  
 ATATCTGCCATATTATAATGTCTCACATCAGCTGGCTACCTTCACTCTAAAGGGATCTTTGAGAGAAATA  
 CAAGAGCTGCAGGTGTGGTATACCAAGCTGGAACTCCGCAGCAGAGACTTCATTTTAAACAACCTGGATA  
 CTCTATGGCTCCTTGACGGCAGCGGAGTTTCACTGGAACCTGGAGGAGGACGAGATATTTACGCTCAC  
 CACTCTGACCACAGGTCGAAAGGCAGCTACCCTCCCCCTCCAGCTCGAAGCCCTTCCCAACCAACTAC  
 AAGGATGATTTCAATGTTGAGTACCCACTTTTTAGTGAAGCTCCGAATTTTGTGATCAGACTGGCGTGT  
 TTGAGTACTACATGAATAATGAAGACCGTGAGCACCGCTTACGCTGCGCAAGTTCTCAACCAACGACC  
 TATTACCTGGGCTGCAGACGCTCCAGCACAATCAGTGTATAGGCGATCACCCTGGACCAACATGACT  
 GTGCAGTGGATGTTTATATAGAGACCCCTCGGAGCGGCGGCGTATTCTGCTGGAAGAGTGAATAAAG  
 GTGGAATCTTGATTAGAAGTGTACAGGAGTCTTTTTCTGGATTTTGGCAATGGCTCTTACAGAGTCAC  
 AGCTGACCTGGGTGGATGGATAACGTATGCTTCAGGACATGCGGACGTTACAGCTAAACGATGGTACACA  
 CTCACCTTAGGCATTAAGGGTATTTCCGCTTTGGTATGTTGAACGGCACGATCCTATGGAAAAACGTCC  
 GTGTGAAATACCCAGGCGATGGCTGGGCTGCGATCGGAACACACACCTTCGAGTTTGGCAGTTTGACAA  
 CTTTCGCGTGGAAAGCTGCTCGC

**ACGCGT**ACGCGGCCGCTCGAG - GFP Tag - GTTTAA

**Protein Sequence:** >MG225749 representing NM\_008079  
 Red=Cloning site Green=Tags(s)

MANSQPKASQQRQAKVMTAAAGSASRVAVPLLLCALLVPGGAYVLDDSDGLGREFDGIGAVSGGGATSRL  
 LVNYPEPYRSEILDYLFKPNFGASLHILKVEIGGDGQTTDGTPEPSSHMYELDENYFRGYEWLMKEAKKR  
 NPDIIILMGLPWSFPGWLKGFSWPYVNLQLTAYYVVRWILGAKHYHDLIDYIGIWNERPFDANYIKELR  
 KMLDYQGLQRVRIIASDNLWEPISSSLLDQELWKVVDVIGAHYPGTYYVWNAKMSGKKLWSEDFSTIN  
 SNVGAGCWSRILNQYINGNMTSTIAWNLVASYEELPYGRSGLMTAQEPWSGHYVVASPIWVSAHTTQF  
 TQPGWYYLKTGVHLEKGGSYVALTDGLGNLTIIETMSHQHSMCIRPYLPYYNVSHQLATFTLKGSREI  
 QELQVWYTKLGTQQRLHFKQLDTLWLLDGSGSFTLELEDEIFTLTTLTTGRKGSYPPPPSSKPFPTNY  
 KDDFNVEYPLFSEAPNFADQTGVFEYMNEDREHRFTLRQVLNQRPIWAAASSTISVIGDHHWTNMT  
 VQCDVYIETPRSGGVFIAGRNVKGGILIRSATGVFFWIFANGSYRVATDLGGWITYASGHADVTAKRWYT  
 LTLGIKGYFAFGMLNGTILWKNVRVKYPGHGWAAIGTHTFEFAQFDNFRVEAAR

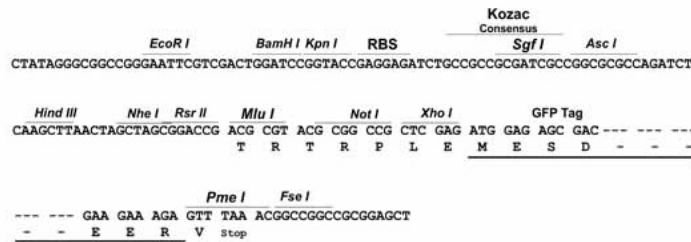
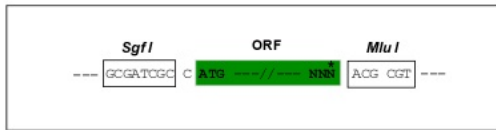
TRTRPLE - GFP Tag - V

**Chromatograms:** [https://cdn.origene.com/chromatograms/ja2300\\_h04.zip](https://cdn.origene.com/chromatograms/ja2300_h04.zip)

**Restriction Sites:** Sgfl-MluI

**Cloning Scheme:**

Cloning sites used for ORF Shuttling:

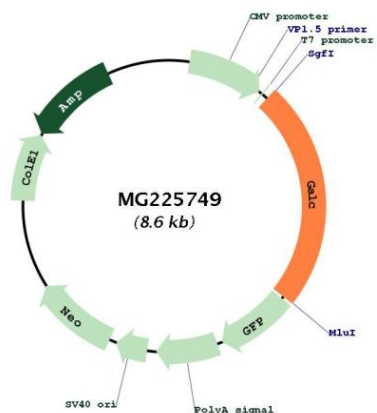


**ACCN:** NM\_008079

**ORF Size:** 2052 bp

<b>OTI Disclaimer:</b>	Due to the inherent nature of this plasmid, standard methods to replicate additional amounts of DNA in E. coli are highly likely to result in mutations and/or rearrangements. Therefore, OriGene does not guarantee the capability to replicate this plasmid DNA. Additional amounts of DNA can be purchased from OriGene with batch-specific, full-sequence verification at a reduced cost. Please contact our customer care team at <a href="mailto:custsupport@origene.com">custsupport@origene.com</a> or by calling 301.340.3188 option 3 for pricing and delivery.
	The molecular sequence of this clone aligns with the gene accession number as a point of reference only. However, individual transcript sequences of the same gene can differ through naturally occurring variations (e.g. polymorphisms), each with its own valid existence. This clone is substantially in agreement with the reference, but a complete review of all prevailing variants is recommended prior to use. <a href="#">More info</a>
<b>OTI Annotation:</b>	This clone was engineered to express the complete ORF with an expression tag. Expression varies depending on the nature of the gene.
<b>Components:</b>	The ORF clone is ion-exchange column purified and shipped in a 2D barcoded Matrix tube containing 10ug of transfection-ready, dried plasmid DNA (reconstitute with 100 ul of water).
<b>Reconstitution Method:</b>	<ol style="list-style-type: none"> <li>1. Centrifuge at 5,000xg for 5min.</li> <li>2. Carefully open the tube and add 100ul of sterile water to dissolve the DNA.</li> <li>3. Close the tube and incubate for 10 minutes at room temperature.</li> <li>4. Briefly vortex the tube and then do a quick spin (less than 5000xg) to concentrate the liquid at the bottom.</li> <li>5. Store the suspended plasmid at -20°C. The DNA is stable for at least one year from date of shipping when stored at -20°C.</li> </ol>
<b>RefSeq:</b>	<a href="#">NM_008079.4</a> , <a href="#">NP_032105.2</a>
<b>RefSeq Size:</b>	3723 bp
<b>RefSeq ORF:</b>	2055 bp
<b>Locus ID:</b>	14420
<b>UniProt ID:</b>	<a href="#">P54818</a>
<b>Cytogenetics:</b>	12 49.83 cM
<b>Gene Summary:</b>	This gene encodes galactosylceramidase, the lysosomal hydrolase involved in the catabolism of galactosylceramide. Mutations in this gene result in slow growth, tremors and hind leg weakness, collectively termed as the 'twitcher' phenotype. In humans, deficiency of this gene product causes a lysosomal storage disorder known as Krabbe disease. [provided by RefSeq, Dec 2014]

Product images:



Circular map for MG225749