

## Product datasheet for **MG225736**

### **Patz1 (NM\_019574) Mouse Tagged ORF Clone**

#### **Product data:**

|                           |   |
|---------------------------|---|
| Product Type:             | Expression Plasmids                         |
| Product Name:             | Patz1 (NM_019574) Mouse Tagged ORF Clone    |
| Tag:                      | TurboGFP                                    |
| Symbol:                   | Patz1                                       |
| Synonyms:                 | 8430401L15Rik; AI447519; Mazr; Patz; Zfp278 |
| Mammalian Cell Selection: | Neomycin                                    |
| Vector:                   | pCMV6-AC-GFP (PS100010)                     |
| E. coli Selection:        | Ampicillin (100 ug/mL)                      |



[View online »](#)

**ORF Nucleotide Sequence:**

>MG225736 representing NM\_019574  
 Red=Cloning site Blue=ORF Green=Tags(s)

TTTTGTAATACGACTCACTATAGGGCGGCCGGAATTCGTCGACTGGATCCGGTACCGAGGAGATCTGCC  
 GCC**GCGATCGCC**

ATGGAGCGGGTCAACGACGCTTCTTGGCGTCCGTCGGGCTGCTACACCTACCAGGTGAGCAGACACAGTA  
 CGGAGATGCTGCACAACCTGAACCAACAACGCAAAAACGCGGGCGCTTTTGGCAGCTGCTCCTACGAGT  
 AGGCGACGAGAGCTTCCAGCGCACCGCCGCTACTGGCTGCCTGCAGCGAGTACTTTGAGTCTGTGTTT  
 AGCGCCAGTTAGGCGACGGCGGAGCTGCAGATGGTGGTCTGCTGATGTGGGAGCGCGCGGGCGGCTC  
 CAGGCGCGGAGCTGGAGGCAGCCGGAACCTGGAGATGCACACCATCAGTTCCAAAGTGTTCGGAGACAT  
 CCTGGACTTCGTTATACGTCCGAATCGTTGTGCGCCTAGAGAGCTTCCCCGAGCTCATGACGGCCGCC  
 AAGTTCCTGCTGATGAGGTGGTTCATCGAGATCTGCCAGGAAGTAAACAAACAGTCCAACGTGCAGATCC  
 TCGTGCCCTGCCGGGCTGATATCATGCTCTTTCGCCACCTGGGACTTCTGACTTGGCTTCCCTTT  
 GGACATGACCAACGGGGCAGCCATGGCAGCCAACAGTAACGGTATTGCTGGCAGTATGCAGCCCGAGGAG  
 GAGGCTGCCAGGGCCACAGGTGCTGCTATTGCGGGCCAAGCTTCTCTGCCTGTGTTACCCGGGGTGGACA  
 GATTGCCCATGGTGGCTGGACCCCTATCCCCCAACTACTGACTTCTCCGTTCCCTAATGTGGCATCCAG  
 TGCACCTCCACTAACTAGCAAGCGAGGCCGGGGACGCCCCAGGAAGGCCAACCTGCTGGACTCCATGTTT  
 GGGTCTCCAGGGGGCTTGGGGAAGCAGGCATCCTTCCATGTGGCCTGTGCGGGAAGGTGTTCACTGACG  
 CCAACCGGCTCCGGCAACATGAGGCCACGACGGCGTCAACAAGCTCCAGTTGGGCTATATCGATCTTCC  
 TCCTCCAAGGCTGGGTGAGAATGGGTTACCCATCTCCGAGGACCCGATGGCCCCAGAAAAGGAGCCGG  
 ACCAGGAAGCAAGTGGCTTGTGAGATCTGTGGCAAGATCTTTCGTGACGTATACCATCTCAACCGGCATA  
 AGCTTTCCACTCGGGGAGAAGCCGTAAGTCTGCGCCGTTGTGGTCTGCGGTTCAAGAGAAAAGACCCG  
 AATGTCGTACCATGTGAGGTCCCATGATGGGTCAAGTGGGCAAAACCGTACATCTGCCAGAGCTGTGGGAAA  
 GTTTTCTCCAGGCCAGATCACTTGAATGGACATATCAAGCAGGTGCACACTTCTGAGCGACCTCACAAAT  
 GTCAGACCTGCAATGCCTCCTTTGCGACTCGAGACCGCCTGCGCTCCACCTGGCCTGTCATGAAGACAA  
 GGTGCCCTGCCAGGTGTGTGAAAGTACTTGGGGCCGCATACATGGCAGACCACCTGAAGAAGCACAGT  
 GAGGGGCCAGCAACTTCTGTAGCATCTGTAACCGAGAAGGCCAGAAATGCTCACATCAGGATCTGATTG  
 AGAGCTCCGACTCCTACGGTACCTCTCCGACGCCAGCGACTGAAGACGCCAGAGAAACAGAGTGCCAA  
 CGGCTCCTTCTCCTGCGACGTGGCAGTCCCTAAAAACAAAATGGAGTCTGACGGGAGAAGAAGTACCCA  
 TGCCCTGAATGTGGGAGCTTCTTCGTTCTAAGTCTACTTGAACAAACACATCCAGAAGGTGCATGTC  
 GTGCCCTTGGGGTCCCTTGGGGACCTGGGCCCTGCCCTTGGTTACCTTTCTCTCCCCAGCAGAACAT  
 GTCTCTTCTTGTGATCCTTTGATTTAGATTGTTTCAGTCAGCGTTTGCATCATCTTTAGTGGATCCTGAG  
 GTGGACCAGCAGCCATGGGGCCTGAAGGGAAG

**ACGCGT**ACGCGGGCCGCTCGAG – GFP Tag – GTTTAA

**Protein Sequence:**

>MG225736 representing NM\_019574  
 Red=Cloning site Green=Tags(s)

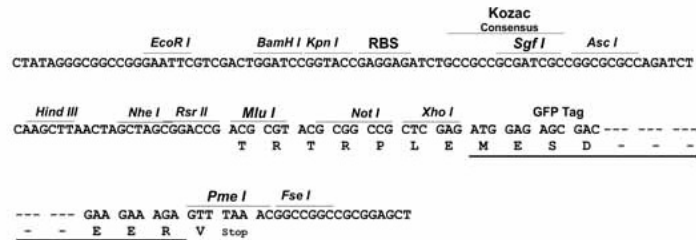
MERVNDASCGPSGCTYQVSRHSTEMLHNLNQQRKNGGRFCVLLRVGDESFPRAHRAVLAACSEYFESVF  
 SAQLGDGGAADGGPADVGGAAAAPGGGAGGSRELEMHTISSKVFGDILDFAYTSRIVVRLESFPELMTAA  
 KFLLMRSVIEICQEVIKQSNVQILVPPARADIMLFRPPGTSDLGFPLDMTNGAAMAANSNGIAGSMQPEE  
 EAARATGAAIAGQASLPVLPVDRLLPMVAGPLSPQLLTSPPFNVAASSAPPLTSKRGRGRPRKANLLDSMF  
 GSPGGLREAGILPCGLCGKVFDTANRLRQHEAQHGVTSLQLGYIDLPPRRLGENGLPISEDPDGPGRKRSR  
 TRKQVACEICGKIFRDVYHLNRHKLSHSSEKPYSCPVCGLRFRKRDMSYHVRSHDGSVGPYICQSCGK  
 GFSRPDHLNGHIKQVHTSERPHKQCTCNASFATRDLRSHLACHEDKVPQVCGKYLRAAYMADHLKKHS  
 EGPSNFCISCNREGQKCSHQDLIESSDSYGDLSDASDLKTPEKQSANGSFSCDVAVPKNKMESDGEKKYP  
 CPEGFFFRSKSYLNKHIQKVHVRALGGPLGDLGPALGSPFSPQQNMSLLESFQFQIVQSAFASSLVDPE  
 VDQQPMGPEGK

**TRTRPLE** – GFP Tag – V

**Restriction Sites:** SgfI-MluI

**Cloning Scheme:**

Cloning sites used for ORF Shutting:



**ACCN:** NM\_019574

**ORF Size:** 1923 bp

**OTI Disclaimer:** The molecular sequence of this clone aligns with the gene accession number as a point of reference only. However, individual transcript sequences of the same gene can differ through naturally occurring variations (e.g. polymorphisms), each with its own valid existence. This clone is substantially in agreement with the reference, but a complete review of all prevailing variants is recommended prior to use. [More info](#)

**OTI Annotation:** This clone was engineered to express the complete ORF with an expression tag. Expression varies depending on the nature of the gene.

**Components:** The ORF clone is ion-exchange column purified and shipped in a 2D barcoded Matrix tube containing 10ug of transfection-ready, dried plasmid DNA (reconstitute with 100 ul of water).

**Reconstitution Method:**

1. Centrifuge at 5,000xg for 5min.
2. Carefully open the tube and add 100ul of sterile water to dissolve the DNA.
3. Close the tube and incubate for 10 minutes at room temperature.
4. Briefly vortex the tube and then do a quick spin (less than 5000xg) to concentrate the liquid at the bottom.
5. Store the suspended plasmid at -20°C. The DNA is stable for at least one year from date of shipping when stored at -20°C.

**RefSeq:** [NM\\_019574.3](#), [NP\\_062520.1](#)

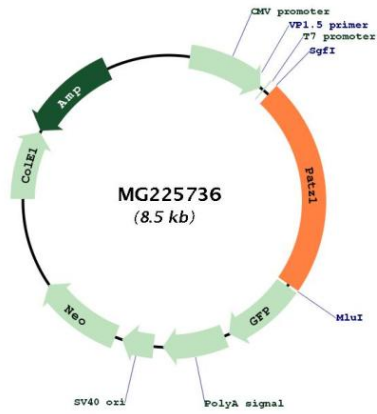
**RefSeq Size:** 2534 bp

**RefSeq ORF:** 1926 bp

**Locus ID:** 56218

**Cytogenetics:** 11 A1

Product images:



Circular map for MG225736