

Product datasheet for **MG225721**

Sgk1 (NM_001161845) Mouse Tagged ORF Clone

Product data:

Product Type:	Expression Plasmids
Product Name:	Sgk1 (NM_001161845) Mouse Tagged ORF Clone
Tag:	TurboGFP
Symbol:	Sgk1
Synonyms:	Sg; Sgk
Mammalian Cell Selection:	Neomycin
Vector:	pCMV6-AC-GFP (PS100010)
E. coli Selection:	Ampicillin (100 ug/mL)



[View online »](#)

ORF Nucleotide Sequence:

>MG225721 representing NM_001161845
 Red=Cloning site Blue=ORF Green=Tags(s)

TTTTGTAATACGACTCACTATAGGGCGGCCGGAATTCGTCGACTGGATCCGGTACCGAGGAGATCTGCC
 GCC**CGCATCGCC**

ATGAATGGATTCCCGGTCAAGAAATGCTCAGCGTTCCAATTTTTAAGAAACGGGTACGAAGATGGATCA
 AGAGCCCCATGGTCAGCGTGGACAAGCATCAGAGCCCCAACTTGAAGTAACTGGCCCTGCTGGGGTGCA
 TCTTCCCCTGGGGAGTCAGACTTTGAGCCATGTGTCAATCATGCCTGGGTGACCATGCTTTCCAAAGG
 GGGATGCTCCCTCCAGAGGAGTCTGTTCTGGGAGATCCAACCTGGGTGTGAAGTGAAAGAACAATGTA
 ATCATGCCAACATCCTGACCAAGCCGACCCAAGAACCCTCTGGACTAATGATGATGCAGCTTTTATGAA
 ACAGAGAAGGATGGCCCTGAACGATTTTATTGAGAAGATTGCCAGCAACACCTATGCATGCAAACACGCT
 GAAGTTCAGTCCATTTTAAAAATGTCCATCCTCAGGAGCCGGAGCTTATGAACGCTAACCCCTCTCCTC
 CGCAAGTCCCTCTCAACAAATCAACCTGGGTCCGTCTCCAACCCTCACGCCAAACCCTCCGACTTTCA
 CTTCTTGAAGTGATCGGAAAGGCAGTTTTGGAAAGTTCTTCTGGCTAGGCACAAGGCAGAAGAAGTA
 TTCTATGCAGTCAAAGTTTTACAGAAGAAAGCCATCCTGAAGAAGAAAGAGGAGAAGCATATTATGTCAG
 AGCGGAATGTTCTGTTGAAGAATGTGAAGCACCCCTTCTGTTGGGCCTTCACTTCTCATTCCAGACCGC
 TGACAAGCTCTACTTTGTCTGGACTACATTAATGGTGGAGAGCTGTTCTACCATCTCCAGAGGGAGCGC
 TGCTTCTGGAACCACGGGCTCGATTCTACGCAGCTGAAATAGCCAGTGCCTGGGCTATCTGCACTCCC
 TAAACATCGTTTATAGAGACTTAAAACCTGAGAATATTCTCTAGACTCCCAGGGGCACATCGTCTCAC
 TGACTTTGGGCTCTGCAAAGAGAATATTGAGCATAACGGGACAACATCTACCTTCTGTGGCACGCCTGAG
 TATCTGGCTCCTGAGGTCTCCATAAGCAGCCGTATGACCGGACGGTGGACTGGTGGTGTCTTGGGGCTG
 TCCTGTATGAGATGCTCTACGGCCTGCCCCGTTTTATAGCCGGAACAGGCTGAGATGTACGACAATAT
 TCTGAACAAGCCTCTCCAGTTGAAACCAATATTACAAACTCGGCAAGGCACCTCCTGGAAGGCCTCCTG
 CAGAAGGACCGGACCAAGAGGCTGGGTGCCAAGGATGACTTTATGGAGATTAAGAGTCATATTTTCTCT
 CTTTAATTAAGTGGGATGATCTCATCAATAAGAAGATTACACCCCATTTAACCCAAATGTGAGTGGGCC
 CAGTGACCTTCGGCACTTCGATCCCAGTTTACCGAGGAGCCGGTCCCAGCTCCATCGGCAGGTCCCTC
 GACAGCATCCTTGTACGGCCAGTGTGAAGGAAGCAGCAGAAGCCTTCTCGGCTTCTCCTATGCACCTC
 CTGTGGATTCTTCTCTC

ACGCGTACGCGGCCGCTCGAG - GFP Tag - GTTTAA

Protein Sequence:

>MG225721 representing NM_001161845
 Red=Cloning site Green=Tags(s)

MNGFVVKKCSAFQFFKKRVRRIKSPMVSVDKHQSPNLKYTGPAVHLPPEGESDFEAMCQSLGDHAFQR
 GMLPPEESCSWEIQPGCEVKEQCNHANILTKPDPRTFWTNDDAAFMKQRRMGLNDFIQKIASNTYACKHA
 EVQSILKMSHPQPELMNANPSPPSPSQINLGPSSNPFAKPSDFHFLKVIKGSFQVLLARHKAEEV
 FYAVKVLQKKAAILKKKEEKHIMSERNVLLKNVHPFLVGLHFSFQTADKLYFVLDYINGGELFYHLQRER
 CFLEPRARFYAAEIASALGYLHSLNIVYRDLKPENILLDSQGHIVLTDGFLCKENIEHNGTSTFCGTPE
 YLAPEVLHKQPYDRTVDWWCLGAVLYEMLYGLPPFYSRNTAEMYDNILNKPLQLKPNITNSARHLLLEGLL
 QKDRTKRLGAKDDFMEIKSHIFFSLINWDDLINKKITPPFNPVSGPSDLRHFDFEFTPEPVPSSIGRSP
 DSILVTASVKEAAEAFGLGFSYAPPVDSFL

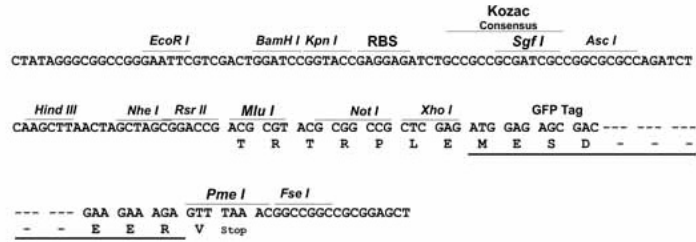
TRTRPLE - GFP Tag - V

Restriction Sites:

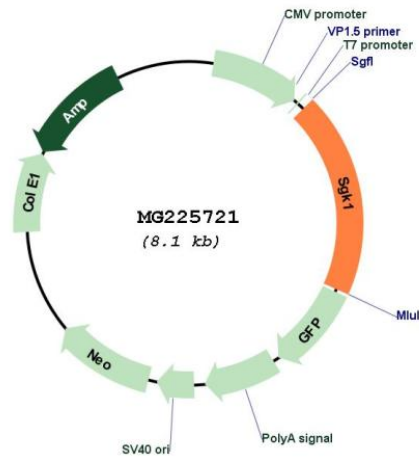
Sgfl-MluI

Cloning Scheme:

Cloning sites used for ORF Shutting:



Plasmid Map:



ACCN:	NM_001161845
ORF Size:	1572 bp
OTI Disclaimer:	<p>Due to the inherent nature of this plasmid, standard methods to replicate additional amounts of DNA in E. coli are highly likely to result in mutations and/or rearrangements. Therefore, OriGene does not guarantee the capability to replicate this plasmid DNA. Additional amounts of DNA can be purchased from OriGene with batch-specific, full-sequence verification at a reduced cost. Please contact our customer care team at custsupport@origene.com or by calling 301.340.3188 option 3 for pricing and delivery.</p> <p>The molecular sequence of this clone aligns with the gene accession number as a point of reference only. However, individual transcript sequences of the same gene can differ through naturally occurring variations (e.g. polymorphisms), each with its own valid existence. This clone is substantially in agreement with the reference, but a complete review of all prevailing variants is recommended prior to use. More info</p>
OTI Annotation:	This clone was engineered to express the complete ORF with an expression tag. Expression varies depending on the nature of the gene.
Components:	The ORF clone is ion-exchange column purified and shipped in a 2D barcoded Matrix tube containing 10ug of transfection-ready, dried plasmid DNA (reconstitute with 100 ul of water).
Reconstitution Method:	<ol style="list-style-type: none"> 1. Centrifuge at 5,000xg for 5min. 2. Carefully open the tube and add 100ul of sterile water to dissolve the DNA. 3. Close the tube and incubate for 10 minutes at room temperature. 4. Briefly vortex the tube and then do a quick spin (less than 5000xg) to concentrate the liquid at the bottom. 5. Store the suspended plasmid at -20°C. The DNA is stable for at least one year from date of shipping when stored at -20°C.
RefSeq:	NM_001161845.1
RefSeq Size:	3121 bp
RefSeq ORF:	1575 bp
Locus ID:	20393
UniProt ID:	Q9WVC6
Cytogenetics:	10 A3
Gene Summary:	<p>This gene encodes a serine/threonine protein kinase that plays an important role in cellular stress response. This kinase activates certain potassium, sodium, and chloride channels, suggesting an involvement in the regulation of processes such as cell survival, neuronal excitability, and renal sodium excretion. This enzyme is activated by protein phosphorylation and degraded via the ubiquitination and proteasome pathway. Multiple transcript variants encoding different isoforms have been found for this gene. A pseudogene of this gene was identified on chromosome 12. [provided by RefSeq, Sep 2009]</p>