

Product datasheet for **MG225714**

Nfatc2 (NM_010899) Mouse Tagged ORF Clone

Product data:

Product Type:	Expression Plasmids
Product Name:	Nfatc2 (NM_010899) Mouse Tagged ORF Clone
Tag:	TurboGFP
Symbol:	Nfatc2
Synonyms:	AI607462; NF-ATc2; NF-ATp; NFAT1; NFAT1-D; Nfatp
Mammalian Cell Selection:	Neomycin
Vector:	pCMV6-AC-GFP (PS100010)
E. coli Selection:	Ampicillin (100 ug/mL)



[View online »](#)

ORF Nucleotide Sequence:

>MG225714 representing NM_010899
 Red=Cloning site Blue=ORF Green=Tags(s)

TTTTGTAATACGACTCACTATAGGGCGGCCGGGAATTCGTCGACTGGATCCGGTACCGAGGAGATCTGCC
 GCC**CGGATCGCC**

ATGGACGTCCCGAGCCGACGCCGACCCCGATGGCGGGGACGGCCCCGCCACGAGCCCGGGGACGTC
 CCCAAGACGAGCTGGACTTTTCCATCCTCTCGATTATGACTATCTGAACCCTATCGAAGAAGAACCGAT
 CGCACATAAGGCCATCAGCTCACCTCCGGACTCGCATACCCGGATGATGTCCTGGACTATGGCCTCAAG
 CCATGCAACCCCTTGCCAGTCTCTCTGGCGAGCCCCCTGGCCGGTTCGGAGAGCCGGATAGTATAGGGT
 TCCAGAACTTTCTGAGCCCGGTCAAGCCAGCAGGGGCTTCGGGCCGAGCCCTCGGATCGAGATCACTCC
 ATCCCACGAACTGATGCAGGCAGGGGGGCCCTCCGTGGGAGAGACGCCGGCTGTCCCCGAGCAGCCG
 GCCCTGGCCCTGGCCGGCTGGCCGCCAGCCGAGGTTACACTGCCCGTGCCCGCTACGAGGGCTACC
 GCGAGCCGCTTTGCTTGAGCCCCGCTAGCAGCGGCTCCTCTGCCAGCTTCATTTCTGACACCTTCTCCCC
 CTACACCTCGCCCTGCGTCTCACCAATAACGCCGGGCCGACGACCTGTGTCCCAAGTTTCAAACATC
 CCTGCTCATTATCCCCCAGAACCTCTCCAATAATGTCACCTCGAACCAGCCTCGCCGAGGACAGCTGCC
 TGGGCCGACACTCGCCCGTGCCCGTCCGGCATCCCGCTCCTCCTCACCCGGTGCCAAAGCGAGGCATTC
 GTGCGCAGAGGCTTTGGTTGCTCCTCTGCCCGCAGCCTCACCCAGCGCTCCCGGAGCCCTCGCCACAG
 CCCTCGCCTCACGTGGCCTGCAGGACGACAGCATCCCGCTGGGTACCCCCACGCGCCGGCTCTGCTG
 TTCTCATGGATGCCCTCAACACCTGGCCACCGACTCGCCCTGCGGGATCCCTCCAAGATATGGAAGAC
 CAGTCTGACCCGACGCTGTGTCCACCCTCCGTCCAAGGTGGCTGGCCGCCACATCTACCCTACT
 GTGGAGTTCTGGGGCCATGTGAGCAGGAGGAGAGGAATTCGCTCCAGAGTCCATCCTGTGGTAC
 GACTACTTGGCCCAAGCAGTTGGTGGCCGATTCCCATCTGCAGCATCCCTGTGACTCATCCCTCCC
 ACCACTCGAGTGGCCACTCTCCAATCAGTCGGGCTCCTATGAGCTACGGATTGAGGTCCAACCCAAGCCC
 CATCACCGGGCCACTATGAGACGGAGGCGAGCCGTGGCGCTGTCAAAGCCCCAACAGGAGGACACCCTG
 TGGTGCAGCTCCACGGCTACATGGAGAACAAGCCTCTGGGGCTTCAGATCTTCATTGGGACAGCAGATGA
 GAGGATCCTTAAGCCGCACGCTTCTACCAAGTACACAGGATCACTGGGAAAACGGTACCACCACGAGC
 TATGAGAAGATCGTAGGCAACACCAAGTCTGGAGATCCCTGGAGCCAAAGAACAACATGAGAGCCA
 CCATCGACTGTGCAGGCATCCTGAAGCTCCGAAACGCTGACATCGAGCTGCGGAAGGGGAGACGGACAT
 CGGCAGGAAGAACACGCGTGTGGCCTGGTGTCCGCGTGCACGTCCCAGAGCCAGTGGGCGCATCGTC
 TCCCTGCAGGCTGCGTCCAACCCATCGAGTGTCTCAGCGCTCTGCCACGAGCTGCCATGGTGGAGA
 GACAAGACATGGACAGCTGCCTGGTCTACGGGGGCCAGCAGATGATCCTCACGGGCCAGAAGTTCACAGC
 GGAGTCCAAGGTTGTGTTTCATGGAGAAGACTACAGATGGGCAGCAGATTTGGGAGATGGAAGCTACGGTG
 GATAAAGACAAGAGCCAGCCTAACATGCTTTTTGTTGAGATCCCCGAGTATCGGAACAAGCACATCCGCG
 TGCCCGTGAAGTCAACTTCTACGTCAACAACGAAAGAGGAAACGAAAGTACGCCACAGCACTTTACCTA
 CCACCCAGTCCCTGCCATCAAGACAGAGCCAGCGATGAGTATGAACCATCTTTGATCTGCAGCCCCGCC
 CATGGAGGCTGGGGAGCCAGCCATATTACCCACAGCACCAATGCTGGCCGAGTCCCCCTCCTGCCTTG
 TGGTACCATGGCCCCCTGCCAACAGTTCGGCTCGGGCTCTCATCCCCGATGCTCGCTACCAACAGCA
 GAGCCCCGAGCTGCCCTTACCAGAGAAGCAAGAGCCTGAGTCCCGCCTGCTGGGCTACCAGCAGCCG
 TCCTCCTGGCAGCACCTTGGGTCTGGCTGATGCCACCCTGCTGTGCTGGTGCATGCTGGTTCTCAGG
 GGCAGGGGAGGCTCCACCCTGCCACACATCCTCGGCCAGCCAGCAGGCTCACCCGTGATCCACTA
 CTCACCCACCAACCAGCAGTTCGCGGTGGGGTACCAGGAGTTCAGCATATCATGACTGTGAAAAC
 TTCGGCCCCAGCTCTGCCAGGCTGGCCCGCTCCCATCAACCAAGTCCAGAGGCTGAGCCCGGGCGCT
 ACCCCACAGTCAACAACAGACTGCCCGAGCCAAAGAGTGCACAAAACGGACCCAGTGACCAGAA
 GGAAGCTCTGCCACGGGAGTACCCTCAAACAGGAACAGAACCTGGACCAGACCTACCTGGATGACGTT
 AATGAAATCATCAGGAAGGAGTTTTCAGGACCTCCCTCCCGAAATCAGACC

AG**CGGACCG**ACGCGTACGCGGCCGCTCGAG - GFP Tag - GTTTAA

Protein Sequence: >MG225714 representing NM_010899
 Red=Cloning site Green=Tags(s)

```
MDVPEPQDPDGGDGGHEPGGSPQDELDF SILFDYDYLNPIDEEPIAHKAISSPSGLAYPDDVLDYGLK
PCNPLASLSGEPGRFGEPDSIGFQNFLSPVKPAGASGSPRIEITPSHELMQAGGALRGRDAGLSPEQP
ALALAGVAASPRFTLPVPGYEGYREPLCLSPASSGSSASFISDTFSPYTPCVSPNNAGPDDLCPQFQNI
PAHYSPTSPI MSPRTSLAEDSCLGRHSPVPRPASRSSSPGAKRRHS CAEALVAPLPAAS PQRSRSPSQ
PSPHVALQDSDIPAGYPPTAGSAV LMDALNLTATDSPCGIPSKIWK TSPDPTPVSTAPSKAGLARHIYPT
VEFLGPCQEERNSAPESILLVPPTWPKQLVPAIPIC SIPVTASLPLEWPLSNQSGSYELRIEVQPKP
HHRAHYETEGSRGAVKAPTGGHPVVQLHGYMENKPLGLQIFIGTADERILKPHAFYQVHRITGKTVTTTS
YEKIVGNTKVL EIPLEPKNNMRATIDCAGILKLRNADIELRKGETDIGRKNTRVRLVFRVHVPEPSGRIV
SLQAASNPIECSQRSAHELPMVERQDMDSCLVYGGQMMILTGNFTAESKVVFMKTTDGGQIWEMEATV
DKDKSQPNMLFVEIPEYRNKHIRVPVKVNFYVINGKRKRSQPQHFTYHPVPAIKTEPSDEYEPSLICSPA
HGGLGSQPYYPQHPLAESPSCLVATMAPCQQFRSGLSSPDARYQQQSPAALYQRSKSLSPGLLGYQQP
SLLAAPLGLADAHRSVLVHAGSQGQGGSTL PHTSSASQQASPV IHYSP TNQQLRGGGHQEFQHIMYCEN
FGPSSARPGPPPINQGQRLSPGAYPTVIQQQTAPSQRAAKNGPSDQKEALPTGVTVKQEQLDQTYLDDY
NEIIRKEFGPPSRNQ T
```

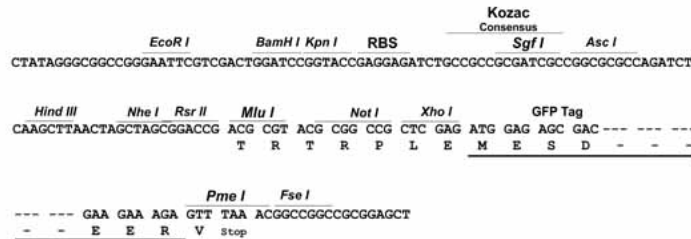
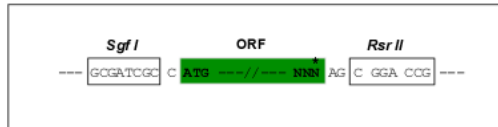
SGPTRRRLE - GFP Tag - V

Chromatograms: https://cdn.origene.com/chromatograms/ja1490_c04.zip

Restriction Sites: SgfI-RsrII

Cloning Scheme:

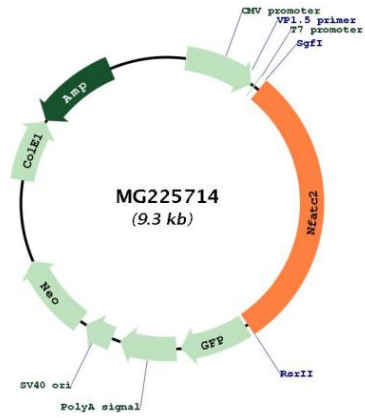
Cloning sites used for ORF Shuttling:



ACCN: NM_010899

ORF Size:	2781 bp
OTI Disclaimer:	<p>Due to the inherent nature of this plasmid, standard methods to replicate additional amounts of DNA in E. coli are highly likely to result in mutations and/or rearrangements. Therefore, OriGene does not guarantee the capability to replicate this plasmid DNA. Additional amounts of DNA can be purchased from OriGene with batch-specific, full-sequence verification at a reduced cost. Please contact our customer care team at custsupport@origene.com or by calling 301.340.3188 option 3 for pricing and delivery.</p> <p>The molecular sequence of this clone aligns with the gene accession number as a point of reference only. However, individual transcript sequences of the same gene can differ through naturally occurring variations (e.g. polymorphisms), each with its own valid existence. This clone is substantially in agreement with the reference, but a complete review of all prevailing variants is recommended prior to use. More info</p>
OTI Annotation:	This clone was engineered to express the complete ORF with an expression tag. Expression varies depending on the nature of the gene.
Components:	The ORF clone is ion-exchange column purified and shipped in a 2D barcoded Matrix tube containing 10ug of transfection-ready, dried plasmid DNA (reconstitute with 100 ul of water).
Reconstitution Method:	<ol style="list-style-type: none"> 1. Centrifuge at 5,000xg for 5min. 2. Carefully open the tube and add 100ul of sterile water to dissolve the DNA. 3. Close the tube and incubate for 10 minutes at room temperature. 4. Briefly vortex the tube and then do a quick spin (less than 5000xg) to concentrate the liquid at the bottom. 5. Store the suspended plasmid at -20°C. The DNA is stable for at least one year from date of shipping when stored at -20°C.
RefSeq:	NM_010899.3
RefSeq Size:	6660 bp
RefSeq ORF:	2784 bp
Locus ID:	18019
UniProt ID:	Q60591
Cytogenetics:	2 88.91 cM
Gene Summary:	Plays a role in the inducible expression of cytokine genes in T-cells, especially in the induction of the IL-2, IL-3, IL-4, TNF-alpha or GM-CSF. Promotes invasive migration through the activation of GPC6 expression and WNT5A signaling pathway.[UniProtKB/Swiss-Prot Function]

Product images:



Circular map for MG225714