

Product datasheet for **MG225712**

Nfatc2 (NM_001037178) Mouse Tagged ORF Clone

Product data:

Product Type:	Expression Plasmids
Product Name:	Nfatc2 (NM_001037178) Mouse Tagged ORF Clone
Tag:	TurboGFP
Symbol:	Nfatc2
Synonyms:	AI607462; NF-ATc2; NF-ATp; NFAT1; NFAT1-D; Nfatp
Mammalian Cell Selection:	Neomycin
Vector:	pCMV6-AC-GFP (PS100010)
E. coli Selection:	Ampicillin (100 ug/mL)



[View online »](#)

ORF Nucleotide Sequence:

>MG225712 representing NM_001037178
 Red=Cloning site Blue=ORF Green=Tags(s)

TTTTGTAATACGACTCACTATAGGGCGGCCGGAATTCGTCGACTGGATCCGGTACCGAGGAGATCTGCC
 GCC**CGGATCGCC**

ATGTCACCTCGAACCAGCCTCGCCGAGGACAGCTGCCTGGCCGACACTCGCCCGTGCCCGTCCGGCAT
 CCCGCTCCTCCTACCCGGTGCCAAGCGGAGGCATTTCGTGCGCAGAGGCTTTGGTTGCTCCTCTGCCCGC
 AGCCTCACCCAGCGCTCCCGGAGCCCTCGCCACAGCCCTCGCCTCACGTGGCACTGCAGGACGACAGC
 ATCCCGCTGGGTACCCCCACGGCCGGCTCTGCTGTTCTCATGGATGCCCTCAACACCCTGGCCACCG
 ACTCGCCTGCGGGATCCCTCCAAGATATGGAAGACCAGTCTGACCCGACGCTGTGTCCACCCTCC
 GTCCAAGGCTGGCTGGCCGCCACATCTACCCTACTGTGGAGTCTCTGGGGCCATGTGAGCAGGAGGAG
 AGGAGGAATTCGCTCCAGAGTCCATCCTGCTGGTACCACCTACTGGCCCAAGCAGTTGGTGCCGGCCA
 TTCCCATCTGCAGCATCCCTGTGACTGCATCCCTCCCACCACTCGAGTGGCCACTCTCCAATCAGTCGGG
 CTCTATGAGCTACGGATTGAGGTCCAACCAAGCCCATCACCGGGCCACTATGAGACGGAGGGCAGC
 CGTGGCGCTGTCAAAGCCCAACAGGAGGACACCTGTGGTGCAGCTCCACGGTACATGGAGAACAAGC
 CTCTGGGGCTTCAGATCTTCATTGGGACAGCAGATGAGAGGATCCTTAAGCCGCACGCCTTCTACCAAGT
 ACACAGGATCACTGGGAAAACGGTCACCACCACGAGCTATGAGAAGATCGTAGGCAACACCAAGTCCCTG
 GAGATCCCCCTGGAGCCAAAGAACAATGAGAGCCACCATCGACTGTGCAGGCATCCTGAAGCTCCGAA
 ACGCTGACATCGAGCTGCGGAAGGGCGAGACGGACATCGGCAGGAAGAACACGCGTGTGCGCCTGGTGT
 CCGCGTGCAGTCCCAGAGCCAGTGGGCGCATCGTCTCCCTGCAGGCTGCGTCCAACCCATCGAGTGC
 TCTCAGCGCTCTGCCACGAGCTGCCATGGTGGAGAGACAAGACATGGACAGCTGCCTGGTCTACGGGG
 GCCAGCAGATGATCCTCACGGGCCAGAACTTCACAGCGGAGTCCAAGTTGTGTTTCATGGAGAAGACTAC
 AGGACCTGCAGGGACCTGTGAGACTCGGCCTTTGCCATCTCTCTGATCTCAGCTGACCGTCTCTCCCC
 TGGCTTCCCGGCTGCAGAGAAACCCTCTGGCTCTGTCTCAGATGCTCCGTGCTCCTTCTGCCCCAG
 GATCTTCGCTGTGCTGGCTCTG

AG**CGGACCG**ACGCGTACGCGGCCGCTCGAG - GFP Tag - GTTTAA

Protein Sequence:

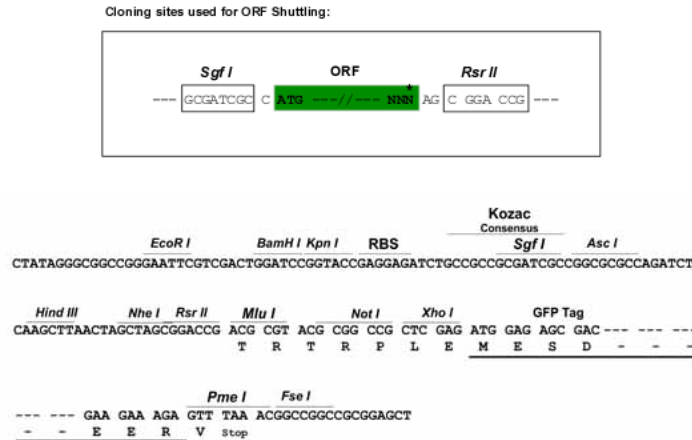
>MG225712 representing NM_001037178
 Red=Cloning site Green=Tags(s)

MSPRTSLAEDSCLGRHSPVPRPASRSSSPGAKRRHSACAEALVAPLPAASPQRSRSPSPQSPHVALQDDS
 IPAGYPPTAGSAVLMALNTLATDSPCGIPSKIWKTSPTPTVSTAPSKAGLARHIYPTVEFLGPCEQEE
 RRNSAPESILLVPPTWPKQLVPAIPICSIPVTASLPPEWPLSNQSGSYELRIEVQPKPHHRAHYETEGS
 RGAVKAPTGGHPVVQLHGMYENKPLGLQIFIGTADERILKPHAFYQVHRITGKTVTTTSYEKIVGNTKVL
 EIPLEPKNNMRATIDCAGILKLRNADIELRKGETDIGRKNTRVRLVFRVHVPEPSGRIVSLQAASNPIEC
 SQRSAHELPMVERQDMDSCLVYGGQMILTGQNF TAESKVVFMKTTGPAGTCETRPLPISLISADRLSP
 WLSRLQRNPPGSVFRCSVLLPAGSSLVLLAL

SGP**TRRRLE** - GFP Tag - V

Restriction Sites:

Sgfl-RsrII

Cloning Scheme:


ACCN: NM_001037178

ORF Size: 1356 bp

OTI Disclaimer: The molecular sequence of this clone aligns with the gene accession number as a point of reference only. However, individual transcript sequences of the same gene can differ through naturally occurring variations (e.g. polymorphisms), each with its own valid existence. This clone is substantially in agreement with the reference, but a complete review of all prevailing variants is recommended prior to use. [More info](#)

OTI Annotation: This clone was engineered to express the complete ORF with an expression tag. Expression varies depending on the nature of the gene.

Components: The ORF clone is ion-exchange column purified and shipped in a 2D barcoded Matrix tube containing 10ug of transfection-ready, dried plasmid DNA (reconstitute with 100 ul of water).

Reconstitution Method:

1. Centrifuge at 5,000xg for 5min.
2. Carefully open the tube and add 100ul of sterile water to dissolve the DNA.
3. Close the tube and incubate for 10 minutes at room temperature.
4. Briefly vortex the tube and then do a quick spin (less than 5000xg) to concentrate the liquid at the bottom.
5. Store the suspended plasmid at -20°C. The DNA is stable for at least one year from date of shipping when stored at -20°C.

RefSeq: [NM_001037178.2](#), [NP_001032255.1](#)

RefSeq Size: 2742 bp

RefSeq ORF: 1359 bp

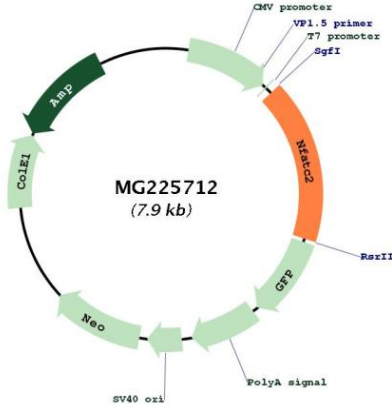
Locus ID: 18019

Cytogenetics: 2 88.91 cM

Gene Summary:

Plays a role in the inducible expression of cytokine genes in T-cells, especially in the induction of the IL-2, IL-3, IL-4, TNF-alpha or GM-CSF. Promotes invasive migration through the activation of GPC6 expression and WNT5A signaling pathway.[UniProtKB/Swiss-Prot Function]

Product images:



Circular map for MG225712