

## Product datasheet for **MG225711**

### **Nfatc2 (NM\_001037177) Mouse Tagged ORF Clone**

#### **Product data:**

Product Type:	Expression Plasmids
Product Name:	Nfatc2 (NM_001037177) Mouse Tagged ORF Clone
Tag:	TurboGFP
Symbol:	Nfatc2
Synonyms:	AI607462; NF-ATc2; NF-ATp; NFAT1; NFAT1-D; Nfatp
Mammalian Cell Selection:	Neomycin
Vector:	pCMV6-AC-GFP (PS100010)
E. coli Selection:	Ampicillin (100 ug/mL)



[View online »](#)

**ORF Nucleotide Sequence:**

>MG225711 representing NM\_001037177  
 Red=Cloning site Blue=ORF Green=Tags(s)

TTTTGTAATACGACTCACTATAGGGCGGCCGGGAATTCGTCGACTGGATCCGGTACCGAGGAGATCTGCC  
 GCC**GCGATCGCC**

ATGGACGTCCCGGAGCCGACGCCGACCCCGATGGCGGGGACGGCCCGGCCACGAGCCCGGGGACGTC  
 CCCAAGACGAGCTGGACTTTTCCATCCTCTCGATTATGACTATCTGAACCCTATCGAAGAAGAACCGAT  
 CGCACATAAGGCCATCAGCTCACCTCCGGACTCGCATACCCGGATGATGTCCTGGACTATGGCCTCAAG  
 CCATGCAACCCCTTGCCAGTCTCTCTGGCGAGCCCTGGCCGGTTCGGAGAGCCGGATAGTATAGGGT  
 TCCAGAATTTCTGAGCCCGGTCAAGCCAGCAGGGGCTTCGGGCCGAGCCCTCGGATCGAGATCACTCC  
 ATCCCACGAACTGATGCAGGCAGGGGGGCCCTCCGTGGGAGAGACGCCGGCTGTCCCCGAGCAGCCG  
 GCCCTGGCCCTGGCCGGCTGGCCGCCAGCCGAGGTTACACTGCCCGTGCCCGCTACGAGGGCTACC  
 GCGAGCCGCTTTGCTTGAGCCCGCTAGCAGCGGCTCCTCTGCCAGCTTCATTTCTGACACCTTCTCCCC  
 CTACACCTCGCCCTGCGTCTACCCAATAACGCCGGGCCGACGACCTGTGTCCCAAGTTTCAAACATC  
 CCTGCTCATTATCCCCCAGAACCTCTCCAATAATGTCACCTCGAACAGCCTCGCCGAGGACAGCTGCC  
 TGGGCCGACACTCGCCCGTGCCCGTCCGGCATCCCGCTCCTCCTCACCCGGTGCCAAGCGGAGGCAATC  
 GTGCGCAGAGGCTTTGGTTGCTCCTCTGCCCGCAGCCTCACCCAGCGCTCCCGGAGCCCTCGCCACAG  
 CCCTCGCCTCACGTGGCACTGCAGGACGACAGCATCCCGCTGGGTACCCCCACGCGCCGGCTCTGCTG  
 TTCTCATGGATGCCCTCAACACCTGGCCACCGACTCGCCCTGCGGGATCCCTCCAAGATATGGAAGAC  
 CAGTCTGACCCGACGCTGTGTCCACCCTCCGTCCAAGGCTGGCTGGCCGCCACATCTACCCTACT  
 GTGGAGTTCCTGGGGCCATGTGAGCAGGAGGAGAGGGAATTCGCTCCAGAGTCCATCCTGCTGGTAC  
 CACCTACTTGGCCAAGCAGTTGGTGGCCGCAATCCCATCTGCAGCATCCCTGTGACTGCATCCCTCCC  
 ACCACTCGAGTGCCACTCTCCAATCAGTCGGGCTCCTATGAGCTACGGATTGAGGTCCAACCCAAGCCC  
 CATCACCGGGCCACTATGAGACGGAGGCGAGCCGTGGCGCTGTCAAAGCCCCAACAGGAGGACACCCTG  
 TGGTGCAGCTCCACGGCTACATGGAGAACAAGCCTCTGGGGCTTCAGATCTTCATTGGGACAGCAGATGA  
 GAGGATCCTTAAGCCGCACGCCTTCTACCAAGTACACAGGATCACTGGGAAAACGGTCACCACCACGAGC  
 TATGAGAAGATCGTAGGCAACACCAAGGCTCTGGAGATCCCCCTGGAGCCAAAGAACAACATGAGAGCCA  
 CCATCGACTGTGCAGGCATCCTGAAGCTCCGAAACGCTGACATCGAGCTGCGGAAGGGCGAGACGGACAT  
 CGGCAGGAAGAACACGCGTGTGCGCCTGGTGTTCGCGTGCACGTCCCAGAGCCAGTGGGCGCATCGTC  
 TCCCTGCAGGCTGCGTCCAACCCATCGAGTGCTCTCAGCGCTCTGCCACGAGCTGCCATGGTGGAGA  
 GACAAGACATGGACAGCTGCCTGGTCTACGGGGCCAGCAGATGATCCTCACGGGCCAGAACTTCACAGC  
 GGAGTCCAAGGTTGTGTTTCATGGAGAAGACTACAGGACCTGCAGGGACCTGTGAGACTCGGCCTTTGCC  
 ATCTCTCTGATCTCAGCTGACCGTCTCTCCCCCTGGCTTCCCGGCTGCAGAGAAACCTCCTGGCTCTG  
 TCTTCAGATGCTCCGTGCTCCTCTGCCCCAGGATCTTCGTTGTGCTGCTGGCTCTG

AG**CGGACCG**ACGCGTACGCGGCCGCTCGAG – GFP Tag – GTTTAA

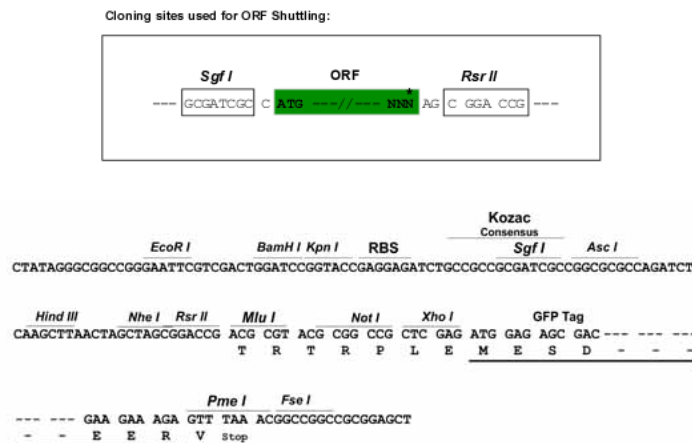
**Protein Sequence:** >MG225711 representing NM\_001037177  
Red=Cloning site Green=Tags(s)

```
MDVPEPQDPDPDGGDGPHEPGGSPQDELDF SILFDYDYLNPIDEEPIAHKAISSPSGLAYPDDVLDYGLK
PCNPLASLSGEPGRFGEPDSIGFQNFLSPVKPAGASGSPRIEITPSHELMQAGGALRGRDAGLSPEQP
ALALAGVAASPRFTLPVPGYEGYREPLCLSPASSGSSASFISDTFSPYTSPCVSPNAGPDDLCPQFQNI
PAHYSRTPSPIMSPRTSLAEDSCLGRHSPVPRPASRSSSPGAKRRHSCEALVAPLPAASQRSRSPSPQ
PSPHVALQDSSIPAGYPPTAGSAVLM DALNLTATDSPCGIPSKIWKTS PDPTPVSTAPSKAGLARHIYPT
VEFLGPCEQEERN SAPESILLVPPTWPKQLVPAIPICSIPTASLPLEWPLSNQSGSYELRIEVQPKP
HHRAYHETEGSRGAVKAPTGGHPVVQLHGYMENKPLGLQIFIGTADERILKPHAFYQVHRITGKTVTTTS
YEKIVGNTKVLEIPLEPKNNMRATIDCAGILKLRNADIELRKGETDIGRKNTRVRLVFRVHVPEPSGRIV
SLQAASNPIECSQRSAHELMVERQDMSCLVYGGQQMILTGQNF TAESKVVFMKTTGPAGTCETRPLP
ISLISADRLSPWLSRLQRNPPGSVFRCSVLLPAPGSSLVLLAL
```

SGPTRRRLE - GFP Tag - V

**Restriction Sites:** SgfI-RsrII

**Cloning Scheme:**



**ACCN:** NM\_001037177

**ORF Size:** 2019 bp

**OTI Disclaimer:** The molecular sequence of this clone aligns with the gene accession number as a point of reference only. However, individual transcript sequences of the same gene can differ through naturally occurring variations (e.g. polymorphisms), each with its own valid existence. This clone is substantially in agreement with the reference, but a complete review of all prevailing variants is recommended prior to use. [More info](#)

**OTI Annotation:** This clone was engineered to express the complete ORF with an expression tag. Expression varies depending on the nature of the gene.

**Components:** The ORF clone is ion-exchange column purified and shipped in a 2D barcoded Matrix tube containing 10ug of transfection-ready, dried plasmid DNA (reconstitute with 100 ul of water).

**Reconstitution Method:**

1. Centrifuge at 5,000xg for 5min.
2. Carefully open the tube and add 100ul of sterile water to dissolve the DNA.
3. Close the tube and incubate for 10 minutes at room temperature.
4. Briefly vortex the tube and then do a quick spin (less than 5000xg) to concentrate the liquid at the bottom.
5. Store the suspended plasmid at -20°C. The DNA is stable for at least one year from date of shipping when stored at -20°C.

**RefSeq:** [NM\\_001037177.2](#), [NP\\_001032254.1](#)

**RefSeq Size:** 3362 bp

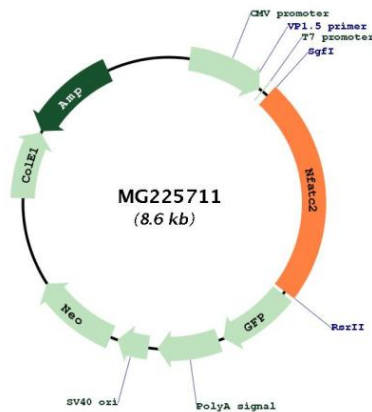
**RefSeq ORF:** 2022 bp

**Locus ID:** 18019

**Cytogenetics:** 2 88.91 cM

**Gene Summary:** Plays a role in the inducible expression of cytokine genes in T-cells, especially in the induction of the IL-2, IL-3, IL-4, TNF-alpha or GM-CSF. Promotes invasive migration through the activation of GPC6 expression and WNT5A signaling pathway.[UniProtKB/Swiss-Prot Function]

**Product images:**



Circular map for MG225711