

Product datasheet for **MG225708**

Fgfr1 (NM_010206) Mouse Tagged ORF Clone

Product data:

Product Type:	Expression Plasmids
Product Name:	Fgfr1 (NM_010206) Mouse Tagged ORF Clone
Tag:	TurboGFP
Symbol:	Fgfr1
Synonyms:	AW208770; bFGF-R-1; c-fgr; Eask; Fgfr-1; FGFR-I; FLG; Flt-2; Hspy; MFR
Mammalian Cell Selection:	Neomycin
Vector:	pCMV6-AC-GFP (PS100010)
E. coli Selection:	Ampicillin (100 ug/mL)



[View online »](#)

ORF Nucleotide Sequence:

>MG225708 representing NM_010206
 Red=Cloning site Blue=ORF Green=Tags(s)

TTTTGTAATACGACTCACTATAGGGCGGCCGGGAATTCGTCGACTGGATCCGGTACCGAGGAGATCTGCC
 GCC**CGGATCGCC**

ATGTGGGGCTGGAAGTGCCTCCTTCTGGGCTGTGCTGGTACAGCCACTCTCTGCACTGCCAGGCCAG
 CCCAACCTTGCCGAACAAGCTCAGCCCTGGGGAGTCCCTGTGGAAGTGGAGTCTCTCCTGGTCCACCC
 TGGCGACCTGCTACAGCTTCGCTGTGCGCTTCGCGATGATGTGCAGAGCATCAACTGGCTGCGGGATGGG
 GTGCAGCTGGTGGAGAGCAACCGTACCCGCATCACAGGGGAGGAGGTGGAGGTGCGGGACTCCATCCCCG
 CTGACTCTGGCCTCTACGTTGCGTGACCAGCAGCCCCTCTGGCAGCGATACCACCTACTTCTCCGTCAA
 TGTCTCAGATGCACTCCCATCCTCGAAGATGATGACGACGACGATGACTCCTCCTCGGAGGAGAAAAGAG
 ACGGACAACACCAAAACCAACCCCTGTAGCTCCCTACTGGACATCCCCAGAGAAAATGGAGAAGAACTGC
 ATCGGGTGCCTGCTGCCAAGACGGTGAAGTTCAAGTGCCCGTGCAGTGGGACACCAACCCCACTCTGCG
 CTGGTTGAAAAATGGCAAAGAGTTTAAGCCTGACCACCGAATTGGAGGCTACAAGTTTCGCTATGCCACC
 TGGAGCATCATAATGGATTCTGTGGTGCCTTCTGACAAGGGCAACTACACCTGCATCGTGGAGAATGAGT
 ATGGGAGCATCAACCACACCTACCAGCTTGACGTCGTGGAACGATCTCCGCACCGACCCATCCTTACGGC
 AGGGCTGCCTGCCAACAGACAGTGGCCCTGGGCAGCAATGTGGAGTTCATGTGTAAGGTGTACAGCGAT
 CCGCAGCCTCACATTCAGTGGCTGAAGCACATCGAGGTGAACGGGAGTAAGATCGGGCCAGACAACCTTGC
 CGTATGTCCAGATCCTGAAGACTGCTGGAGTTAATACCACCGACAAGGAAATGGAGGTGCTTCATCTACG
 GAATGTCTCCTTTGAGGATGCGGGGGAGTATACGTGCTTGGCGGGTAACTCTATCGGACTCTCCATCAC
 TCTGCATGGTTGACCGTCTGGAAGCCCTGGAAGAGAGACCAGCTGTGATGACCTCACCGCTCTACCTGG
 AGATCATTATCTACTGCACCGGGCCCTCCTGATCTCCTGCATGTTGGGCTCTGCATCATCTATAAAGT
 GAAGAGCGGCACCAAGAAGAGCGACTTCCATAGCCAGATGGCTGTGCACAAGCTGGCCAAGAGCATCCCT
 CTGCGCAGACAGGTAACAGTGTGACGCTGACTCCAGTGCATCCATGAACTCTGGGGTTCTCCTGGTTCGGC
 CCTCACGGCTCTCCTCCAGCGGGACCCCATGCTGGCTGGAGTCTCCGAATATGAGCTCCCTGAGGATCC
 CCGCTGGGAGCTGCCACGAGACAGACTGGTCTTAGGCAAACCACTTGGCGAGGGCTGCTTCGGGCAGGTG
 GTGTTGGCTGAGGCCATCGGGCTGGATAAAGGACAAACCAACCGTGTGACCAAAGTGGCCGTGAAGATGT
 TGAAGTCCGACGCAACGGAGAAGGACCTGTCGGATCTGATCTCGGAGATGGAGATGATGAAAATGATTGG
 GAAGCACAGAATATCATCAACCTTCTGGGAGCGTGCACACAGGATGGTCTCTTTATGTCATTGTGGAG
 TAGCCTCCAAAGGCAATCTCCGGGAGTATCTACAGGCCCGGAGGCTCCTGGGCTGGAGTACTGCTATA
 ACCCCAGCCACAACCCGAGGAACAGCTGTCTTCAAAGATCTGGTATCCTGTGCCTATCAGGTGGCTCG
 GGGCATGGAGTATCTTGCCTCTAAGAAGTGTATACACCGAGACCTGGCTGCTAGGAACGTCTGGTGACC
 GAGGATAACGTAATGAAGATCGCAGACTTTGGCTTAGCTCGAGACATTCATCATATCGACTACTACAAGA
 AAACCAACACGGCCGGCTGCCTGTGAAGTGGATGGCCCTGAGGCGTGTGTTGACCGGATCTACACACA
 CCAGAGCGATGTGTGGTCTTTTGGAGTGTCTTGTGGGAGATCTCACTCTGGGTGGTCCCCATACCCC
 GGTGTGCCTGTGGAGGAACCTTTCAAGCTGCTGAAGGAGGGTTCATCGAATGGACAAGCCAGTAACTGTA
 CCAATGAGCTGTACATGATGATGCGGGACTGCTGGCATGCAGTGCCTCTCAGAGACCTACGTTCAAGCA
 GTTGGTGAAGACCTGGACCGCATTTGTGGCCTTGACCTCAACAGGAGTATCTGGACCTGTCCATACCG
 CTGGACCACTACTACCCAGCTTTCCCGACACACGGAGCTCCACCTGCTCCTCAGGGGAGGACTCTGTCT
 TCTCTCATGAGCCGTTACCTGAGGAGCCCTGTCTGCCTCGACACCCACCCAGCTTGCCAACAGTGGACT
 CAAACGGCGC

ACGCGTACGCGGCCGCTCGAG – GFP Tag – GTTTAA

Protein Sequence: >MG225708 representing NM_010206
 Red=Cloning site Green=Tags(s)

```

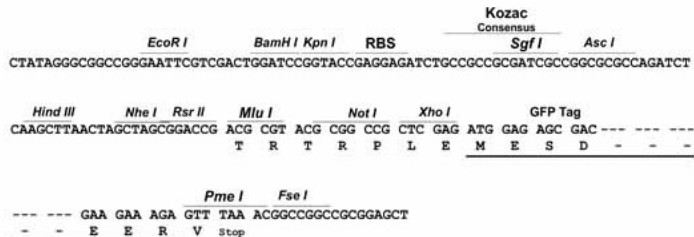
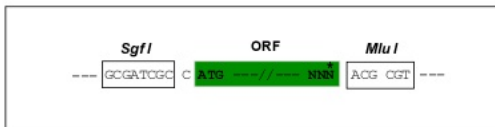
MWGWKCLLFWAVLVTATLCTARPAPTLPEQAQPWGVPEVESLLVHPGDLLQLRCRLRDDVQSINWLRDG
VQLVESNRTRITGEEVEVRDSIPADSGLYACVTSSPSGSDTTYFSVNVSDALPSEDDDDDDSSSEEKE
TDNTKPNPVAPYWTSPEKMEKKLHAVPAAKTVKFKCPSSGTPNPTLRWLKNGKEFKPDHRIGGYKVRAT
WSIIMDSVVPVSDKGNYSICIVENEYGSINHTYQLDVVERSPHRPILQAGLPANKTVALGSNVEFMCKVYSD
PQPHIQWLKHIEVNGSKI GPDNLPYVQILKTAGVNTTDKEMEVLHLRNVSFEDAGEYTCLAGNSIGLSHH
SAWLTVLEALEERPAMVTSPLYLEIIIIYCTGAFLISCM LGSVIIYKMKSGTKKSD FHSQMAVHKLAKSIP
LRRQVTVSADSSASMNSGVLLVRPSRLSSSGTPMLAGVSEYELPEDPRWELPRDRLVLGKPLGEGCFGQV
VLAEAIGLDKDKPNRVTKVAVKMLKSDATEKDLSDLISEMEMMKMIGKHKNIINLLGACTQDGPLYVIVE
YASKGNLREYLQARRPPGLECYNPSHNPEEQ LSSKDLVSCAYQVARGMEYLASKKCIHRDLAARNVLT
EDNVMKIADFLARDIHHIDYKTTNGRLPVKWM APEALFDRIYTHQSDVWVSGVLLWEIFTLGGSPYP
GVPVEELFKLLKEGHRMDKPSNCTNELYMMMRDCWHAVPSQRPTFKQLVEDLDRIVALTSNQEYLDLSIP
LDQYSPSPDTRSTCSSGEDSVFSHEPLPEEPCLPRHPTQLANSGLKRR
  
```

TRTRPLE - GFP Tag - V

Restriction Sites: Sgfl-MluI

Cloning Scheme:

Cloning sites used for ORF Shutting:



ACCN: NM_010206
 ORF Size: 2466 bp

OTI Disclaimer: Due to the inherent nature of this plasmid, standard methods to replicate additional amounts of DNA in E. coli are highly likely to result in mutations and/or rearrangements. Therefore, OriGene does not guarantee the capability to replicate this plasmid DNA. Additional amounts of DNA can be purchased from OriGene with batch-specific, full-sequence verification at a reduced cost. Please contact our customer care team at custsupport@origene.com or by calling 301.340.3188 option 3 for pricing and delivery.

The molecular sequence of this clone aligns with the gene accession number as a point of reference only. However, individual transcript sequences of the same gene can differ through naturally occurring variations (e.g. polymorphisms), each with its own valid existence. This clone is substantially in agreement with the reference, but a complete review of all prevailing variants is recommended prior to use. [More info](#)

OTI Annotation: This clone was engineered to express the complete ORF with an expression tag. Expression varies depending on the nature of the gene.

Components: The ORF clone is ion-exchange column purified and shipped in a 2D barcoded Matrix tube containing 10ug of transfection-ready, dried plasmid DNA (reconstitute with 100 ul of water).

Reconstitution Method:

1. Centrifuge at 5,000xg for 5min.
2. Carefully open the tube and add 100ul of sterile water to dissolve the DNA.
3. Close the tube and incubate for 10 minutes at room temperature.
4. Briefly vortex the tube and then do a quick spin (less than 5000xg) to concentrate the liquid at the bottom.
5. Store the suspended plasmid at -20°C. The DNA is stable for at least one year from date of shipping when stored at -20°C.

RefSeq: [NM_010206.2](#), [NP_034336.2](#)

RefSeq Size: 5008 bp

RefSeq ORF: 2469 bp

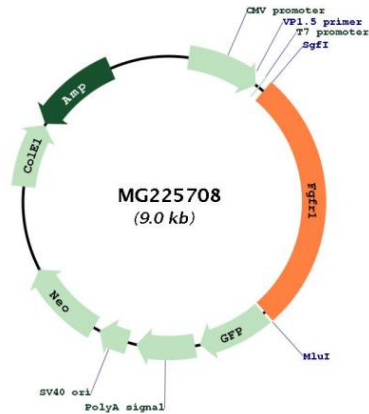
Locus ID: 14182

UniProt ID: [P16092](#)

Cytogenetics: 8 14.12 cM

Gene Summary:

Tyrosine-protein kinase that acts as cell-surface receptor for fibroblast growth factors and plays an essential role in the regulation of embryonic development, cell proliferation, differentiation and migration. Required for normal mesoderm patterning and correct axial organization during embryonic development, normal skeletogenesis and normal development of the gonadotropin-releasing hormone (GnRH) neuronal system. Phosphorylates PLCG1, FRS2, GAB1 and SHB. Ligand binding leads to the activation of several signaling cascades. Activation of PLCG1 leads to the production of the cellular signaling molecules diacylglycerol and inositol 1,4,5-trisphosphate. Phosphorylation of FRS2 triggers recruitment of GRB2, GAB1, PIK3R1 and SOS1, and mediates activation of RAS, MAPK1/ERK2, MAPK3/ERK1 and the MAP kinase signaling pathway, as well as of the AKT1 signaling pathway. Promotes phosphorylation of SHC1, STAT1 and PTPN11/SHP2. In the nucleus, enhances RPS6KA1 and CREB1 activity and contributes to the regulation of transcription. FGFR1 signaling is down-regulated by IL17RD/SEF, and by FGFR1 ubiquitination, internalization and degradation (By similarity).[UniProtKB/Swiss-Prot Function]

Product images:


Circular map for MG225708