

Product datasheet for **MG225698**

Fxr1 (NM_001113188) Mouse Tagged ORF Clone

Product data:

Product Type:	Expression Plasmids
Product Name:	Fxr1 (NM_001113188) Mouse Tagged ORF Clone
Tag:	TurboGFP
Symbol:	Fxr1
Synonyms:	1110050J02Rik; 9530073J07Rik; AI851072; Fxr1h; Fxr1p
Mammalian Cell Selection:	Neomycin
Vector:	pCMV6-AC-GFP (PS100010)
E. coli Selection:	Ampicillin (100 ug/mL)



[View online »](#)

ORF Nucleotide Sequence:

>MG225698 representing NM_001113188
 Red=Cloning site Blue=ORF Green=Tags(s)

TTTTGTAATACGACTCACTATAGGGCGGCCGGAATTCGTCGACTGGATCCGGTACCGAGGAGATCTGCC
 GCC**GCGATCGCC**

ATGGCGGAGCTGACGGTGGAGGTTTCGGCTCCAACGGGCTTTCTACAAGGATTTATCAAAGATGTCC
 ACGAAGACTCCCTCACAGTTGTTTTGAAAATAATTGGCAACCAGAACGCCAGGTTCCGTTAATGAAGT
 GCGATTACCACCACCTGATATAAAAAAAGAAATTAGTGAAGGAGATGAAGTAGAGGTATATCAAGA
 GCAATGACCAAGAGCCATGTGGATGGTGGCTGGCTAAAGTTCGGATGATGAAAGGCGAGTTTTATGTCA
 TTGAATATGCTGCTTGTGATGCCACTTACAATGAAATAGTCACATTTGAACGACTTCGGCCTGTCAATCA
 AAATAAACTGTCAAAAAAATACCTTCTTTAAGTGCACAGTGGATGTTCTGAGGACCTGAGAGAAGCG
 TGTGCTAATGAAAATGCCATAAAGATTTAAGAAAGCAGTAGGAGCATGCAGAATCTTTTATCATCCTG
 AAATACCCAGCTAATGATACTGTGGCCAGTGAAGCAACTGTGAAGAGAGTAAATATCTTAAGTGATAT
 GCATTTGAGAAGTATTCGGACGAAGTTGATGCTTATGTCCAGAAATGAAGAGGCCACTAAGCATTTAGAA
 TGCACAAAACAACTTGCAGCAGCTTTTCATGAAGAATTTGTTGTGAGAGAAGATTTAATGGCCTGGCGA
 TAGGAACGCATGGCAGTAACATACAGCAAGCTAGGAAGGTTTCTGGAGTTACTGCCATTGAGTTAGATGA
 AGACACCGGAACGTTTAGAATCTATGGAGAGAGTGTGAGGCTGTAAAAAAGCTAGAGGTTTCTTGAA
 TTTGTGGAAGATTTTATTCAAGTCCCAGGAATCTTGTGGAAAAGTAATTGGAAAAATGGCAAAGTTA
 TTCAAGAAATAGTGGATAAATCTGGTGTGGTTCGAGTAAGAATTGAAGGAGACAATGAAAATAAACTACC
 TAGAGAAGACGGAATGGTCCATTTGTATTTGTTGGCACTAAAGAAAGCATTGGGAATGTCAAGTTCTT
 CTAGAGTATCACATCGCTTACTTAAAGGAAGTGAACAACCTAAGAATGGAACGTCTGCAGATTGATGAGC
 AGCTGCGACAGATTGGTATGGGTTTCAGACCTTCTCCACCAGAGGGCCTGAAAGAGAGAAAAGGATATGC
 CACTGATGAAAGTACCGTCTCTTCTGTACAAGGTTCTAGGTCTTATAGTGAAGAGGCAGAGGTCGTCGG
 GGCCCTAATTACACCTCCGGTTATGGTACAAATCTGAGCTGTCTAACCCCTCCGAAACAGAATCTGAGC
 GTAAAGATGAGCTGAGTGATTGGTCATTGGCAGGAGAAGATGATCGAGAGACTCGACATCAGCGAGACAG
 CAGGAGACGCCAGGAGGAAGAGGCAGAAGTGTCTGGGGGACGAGGTCGTGGTGGACCACGTGGTGGC
 AAATCCTCCATCAGTTCTGTGCTCAAAGATCCAGACAGCAATCCATACAGCTTACTTGATAATACAGAAT
 CCGATCAGACTGCAGACACTGACGCCAGCGAATCTCACCACAGTACTAACCGTCGTAGGCGGTCTCGTAG
 ACGGAGGACTGATGAAGATGCTGTTCTGATGGATGGACTGACTGAATCTGATACAGCCTCAGTTAATGAG
 AATGGGCTAGATGATAGTAAAAAAACCCAGCGACGCAATCGTAGCCGAGGCGTCGTTTCAGGGGTC
 AGGCAGAAGATAGACAGCCAGTACAGTTGCAGATTATTTCTAGAGCTGAGTCTCAGAGCAGACAAG
 AAACCTCCAAGGAAAATTTGGCTAAAAACAAGAAAGAAATGGCAAAAGATGTGATTGAAGAGCATGGT
 CCTTCAGAAAAGGCAATAAATGGTCCAAGTACGCTTCTGGCGATGAAATTCCTAAGCTACCGCGTACTC
 TGGGAGAAGAAAAGACTAAGACCTTAAAAGAAGACAGCACTCAAGAAGCAGCAGTCTGAATGGTGTTC
 A

ACGCGTACGCGGCCGCTCGAG – GFP Tag – GTTTAA

Protein Sequence: >MG225698 representing NM_001113188
 Red=Cloning site Green=Tags(s)

MAELTVEVRGNSGAFYKGF IKDVHEDSLTVVFENNWQPERQVPFNEVRLPPPPDIKKEISEGDEVEVYSR
 ANDQEPGWLAKVRMMKGEFYVIEYAACDATYNEIVTFERLRPVNQNTVKKNTFFKCTVDVPEDLREA
 CANENAHKDFKAVGACRIFYHPETTQLMILSASEATVKRVNLSMHLRSIRTKLMLMSRNEEATKHE
 CTKQLAAAFHEEFVVREDLMGLAIGTHGSNIQQARKVPGVTAIELDEDTGTFRIYGESAEAVKKARGFLE
 FVEDFIQVPRNLVGKVIKNGKVIQEIVDKSGVVRVRIEGDNENKLPREDGMVPPFVFGTKESIGNVQVL
 LEYHIAYLKEVEQLRMERLQIDEQLRQIGMGRPSSTRGPEREKGYATDESTVSSVQGSRSYSGRGRGR
 GPNYTSGYGTNSELNPNSETESERKDELSDWSLAGEDDRETRHQDRRRRPGGRGRSVSGRGRGGPRGG
 KSSISSVLKDPDSNPYSLLDNTESDQTADTDAESHSTNRRRRRRRRRDEDAVLMGDLTESDTASVNE
 NGLDDSEKKPQRNRNRRRRFRGQAEDRQPVTVADYISRAESQSRQRNLPRETLAKNKKEMAKDVIEEHG
 PSEKAINGPTSASGDEIPKLPRTLGEKTKLTKEDSTQEA AVLNGVS

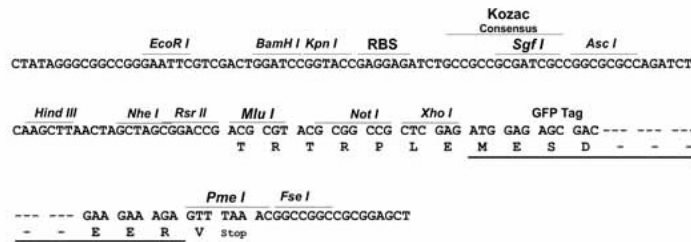
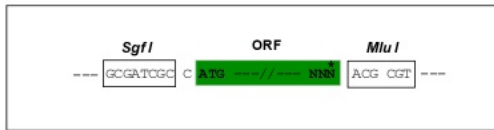
TRTRPLE - GFP Tag - V

Chromatograms: https://cdn.origene.com/chromatograms/ja3123_h10.zip

Restriction Sites: SgfI-MluI

Cloning Scheme:

Cloning sites used for ORF Shuttling:

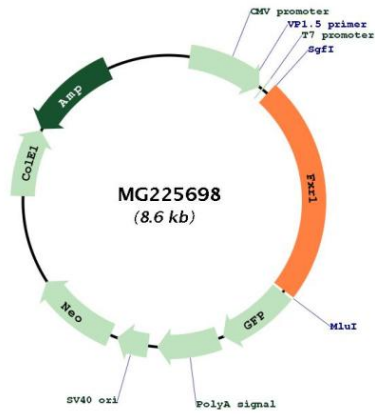


ACCN: NM_001113188

ORF Size: 2031 bp

OTI Disclaimer:	<p>Due to the inherent nature of this plasmid, standard methods to replicate additional amounts of DNA in E. coli are highly likely to result in mutations and/or rearrangements. Therefore, OriGene does not guarantee the capability to replicate this plasmid DNA. Additional amounts of DNA can be purchased from OriGene with batch-specific, full-sequence verification at a reduced cost. Please contact our customer care team at custsupport@origene.com or by calling 301.340.3188 option 3 for pricing and delivery.</p> <p>The molecular sequence of this clone aligns with the gene accession number as a point of reference only. However, individual transcript sequences of the same gene can differ through naturally occurring variations (e.g. polymorphisms), each with its own valid existence. This clone is substantially in agreement with the reference, but a complete review of all prevailing variants is recommended prior to use. More info</p>
OTI Annotation:	This clone was engineered to express the complete ORF with an expression tag. Expression varies depending on the nature of the gene.
Components:	The ORF clone is ion-exchange column purified and shipped in a 2D barcoded Matrix tube containing 10ug of transfection-ready, dried plasmid DNA (reconstitute with 100 ul of water).
Reconstitution Method:	<ol style="list-style-type: none"> 1. Centrifuge at 5,000xg for 5min. 2. Carefully open the tube and add 100ul of sterile water to dissolve the DNA. 3. Close the tube and incubate for 10 minutes at room temperature. 4. Briefly vortex the tube and then do a quick spin (less than 5000xg) to concentrate the liquid at the bottom. 5. Store the suspended plasmid at -20°C. The DNA is stable for at least one year from date of shipping when stored at -20°C.
RefSeq:	NM_001113188.1 , NP_001106659.1
RefSeq Size:	2339 bp
RefSeq ORF:	2034 bp
Locus ID:	14359
UniProt ID:	Q61584
Cytogenetics:	3 A3
Gene Summary:	RNA-binding protein required for embryonic and postnatal development of muscle tissue. May regulate intracellular transport and local translation of certain mRNAs.[UniProtKB/Swiss-Prot Function]

Product images:



Circular map for MG225698