

Product datasheet for **MG225697**

Csf3 (NM_009971) Mouse Tagged ORF Clone

Product data:

Product Type: Expression Plasmids
Product Name: Csf3 (NM_009971) Mouse Tagged ORF Clone
Tag: TurboGFP
Symbol: Csf3
Synonyms: Csf3; G-CSF; MGI-IG
Mammalian Cell Selection: Neomycin
Vector: pCMV6-AC-GFP (PS100010)
E. coli Selection: Ampicillin (100 ug/mL)
ORF Nucleotide Sequence: >MG225697 representing NM_009971
 Red=Cloning site Blue=ORF Green=Tags(s)

TTTTGTAATACGACTCACTATAGGGCGCCGGGAATTCGTCGACTGGATCCGGTACCGAGGAGATCTGCC
 GCC**CGATCGCC**

ATGGCTCAACTTTCTGCCAGAGGCGCATGAAGCTAATGGCCCTGCAGCTGCTGCTGTGGCAAAGTGCAC
 TATGGTCAGGACGAGAGGCGGTTCCCTGGTCACTGTCAGCGCTCTGCCACCATCCCTGCCTCTGCCCG
 AAGCTTCTGCTTAAGTCCCTGGAGCAAGTGAGGAAGATCCAGGCCAGCGGCTCGGTGCTGCTGGAGCAG
 TTGTGTGCCACCTACAAGCTGTGTACCCCGAGGAGCTGGTGTGCTGGGCCACTCTCTGGGGATCCCGA
 AGGCTTCCCTGAGTGGCTGCTTAGCCAGGCCCTGCAGCAGACACAGTGCCTAAGCCAGTCCACAGTGG
 GCTCTGCCTCTACCAAGGTCTCCTGCAGGCTCTATCGGGTATTTCCCTGCCCTGGCCCCACCTTGGAC
 TTGCTTACAGTGGATGTTGCCAACTTTGCCACCACCATCTGGCAGCAGATGGAAAACCTAGGGGTGGCC
 CTAAGTGTGCAGCCACACAGAGCGCCATGCCAGCCTTCACTTCTGCCTTCCAGCGCCGGGAGGAGGTGT
 CCTGGCCATTTCTGACCTGCAGGCTTCTGGAGACGGCTCGCCTTGCTCTGCACCACCTTGGCC

ACGCGTACGCGGCCGCTCGAG - GFP Tag - GTTTAA

Protein Sequence: >MG225697 representing NM_009971
 Red=Cloning site Green=Tags(s)

MAQLSAQRRMCLMALQLLLWQSALWSGREAVPLVTVSALPPSLPLPRSFLLKSLEQVRKIQASGSVLLLEQ
 LCATYKLCHEPELVLLGHSLGIPKASLSGCSSQALQQTQCLSQLHSGLCCLYQGLLQALSGISPALAPTLD
 LLQLDVANFATTIWQOMENLGVAPTVPQTSAMPAFTSAFQRRAGGVLAISYLQGFLETARLALHHLA

TRTRPLE - GFP Tag - V

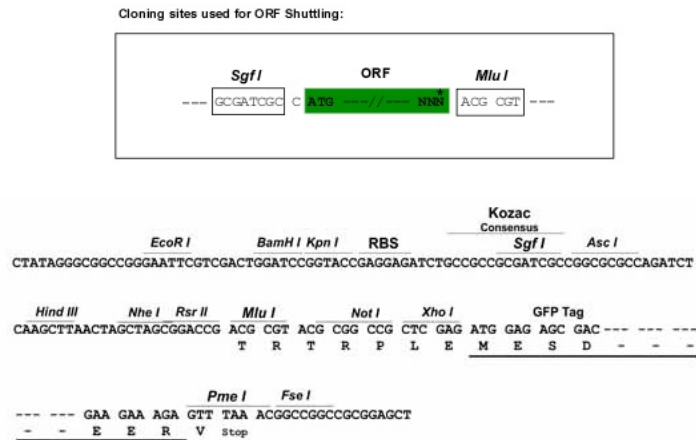
Chromatograms: https://cdn.origene.com/chromatograms/ja1856_a09.zip



[View online »](#)

Restriction Sites: SgfI-MluI

Cloning Scheme:



ACCN: NM_009971

ORF Size: 624 bp

OTI Disclaimer: Due to the inherent nature of this plasmid, standard methods to replicate additional amounts of DNA in E. coli are highly likely to result in mutations and/or rearrangements. Therefore, OriGene does not guarantee the capability to replicate this plasmid DNA. Additional amounts of DNA can be purchased from OriGene with batch-specific, full-sequence verification at a reduced cost. Please contact our customer care team at custsupport@origene.com or by calling 301.340.3188 option 3 for pricing and delivery.

The molecular sequence of this clone aligns with the gene accession number as a point of reference only. However, individual transcript sequences of the same gene can differ through naturally occurring variations (e.g. polymorphisms), each with its own valid existence. This clone is substantially in agreement with the reference, but a complete review of all prevailing variants is recommended prior to use. [More info](#)

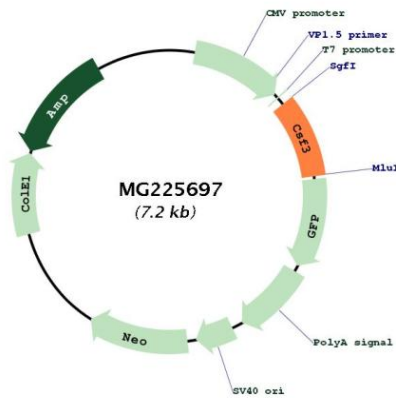
OTI Annotation: This clone was engineered to express the complete ORF with an expression tag. Expression varies depending on the nature of the gene.

Components: The ORF clone is ion-exchange column purified and shipped in a 2D barcoded Matrix tube containing 10ug of transfection-ready, dried plasmid DNA (reconstitute with 100 ul of water).

- Reconstitution Method:**
1. Centrifuge at 5,000xg for 5min.
 2. Carefully open the tube and add 100ul of sterile water to dissolve the DNA.
 3. Close the tube and incubate for 10 minutes at room temperature.
 4. Briefly vortex the tube and then do a quick spin (less than 5000xg) to concentrate the liquid at the bottom.
 5. Store the suspended plasmid at -20°C. The DNA is stable for at least one year from date of shipping when stored at -20°C.

RefSeq: [NM_009971.1, NP_034101.1](#)
RefSeq Size: 1363 bp
RefSeq ORF: 627 bp
Locus ID: 12985
UniProt ID: [P09920](#)
Cytogenetics: 11 62.45 cM
Gene Summary: Granulocyte/macrophage colony-stimulating factors are cytokines that act in hematopoiesis by controlling the production, differentiation, and function of 2 related white cell populations of the blood, the granulocytes and the monocytes-macrophages. This CSF induces granulocytes.[UniProtKB/Swiss-Prot Function]

Product images:



Circular map for MG225697