

## Product datasheet for **MG225695**

### **Slc8a1 (NM\_001112798) Mouse Tagged ORF Clone**

#### **Product data:**

Product Type:	Expression Plasmids
Product Name:	Slc8a1 (NM_001112798) Mouse Tagged ORF Clone
Tag:	TurboGFP
Symbol:	Slc8a1
Synonyms:	AI852629; AV344025; D930008O12Rik; Ncx1
Mammalian Cell Selection:	Neomycin
Vector:	pCMV6-AC-GFP (PS100010)
E. coli Selection:	Ampicillin (100 ug/mL)



[View online »](#)

**ORF Nucleotide Sequence:**

>MG225695 representing NM\_001112798  
 Red=Cloning site Blue=ORF Green=Tags(s)

TTTTGTAATACGACTCACTATAGGGCGGCCGGAATTCGTCGACTGGATCCGGTACCGAGGAGATCTGCC  
 GCC**CGCATCGCC**

ATGCTTCGATTAAGTCTCCACCCAATGTTTCAATGGGATTTTCGTCGGTAGCTCTGGTGGCTCTCTTGT  
 TTCCCATGTTGACCATATAACTGCAGATACAGAGGCAGAAACAGGAGGAAATGAAACCACTGAATGTAC  
 TGGCTCATATTACTGTAAGAAAGGGGTGATCTTGCCCATTTGGGAACCCCAAGACCCATCTTTTGGGGAC  
 AAAATTGCTAGAGCAACTGTGTATTTGTGGCCATGGTCTACATGTTCTTGGAGTTTCTATTATTGCAG  
 ACCGGTTTATGTCCTCTATAGAGGTCACTACCTCTCAAGAGAAAGAAATAACGATAAAGAAACCGAATGG  
 AGAGACCACCAAGACGACGGTGAGAATCTGGAACGAGACTGTGTCGAACCTGACCTTGATGGCCCTGGGA  
 TCTTCTGCTCCTGAGATTCTCTGTCAGTCATTGAAGTGTGGCCATAACTTCACCGCAGGGGACCTGG  
 GTCCCAGCACCATCGTGGGAAGTGTGCCTTTAACATGTTTCATCATAATCGCACTCTGTGTTACGTGGT  
 CCCTGATGGAGAGACAAGGAAGATCAAGCATCTGCGTGTGTTCTTTGTGACAGCAGCCTGGAGCATCTTT  
 GCCTATACCTGGCTTTATATAATCTTGTCTGTCAGCTCTCCTGGAGTTGTGGAGGTCTGGGAAGGCTTGC  
 TTACTTTCTTCTTTCCCATCTGCGTTGTGTTGCGGTGGGTAGCAGACAGGCGCTTCTCTTTTACAA  
 GTATGTCTACAAGCGGTACAGGGCCGGCAAGCAGAGGGGGATGATCATTGAACATGAAGGAGACAGACCA  
 GCTTCCAAAACCTGAAATCGAAATGGATGGGAAAGTGGTCAACTCTCATGTTGACAATTTCTTAGATGGGG  
 CTCTGGTTTTGGAAGTTGATGAGAGGGACCAAGATGATGAGGAAGCCAGGCGTGAGATGGCAAGGATTCT  
 GAAGGAACTTAAGCAGAAGCATCCTGAGAAAGAAATTGAGCAATTAATAGAATTAGCCAACCTACCAGGTC  
 CTAAGTCAACAGCAGAAAAGCCGAGCATTTTACAGGATTCAAGCTACTCGCTGATGACCGGAGCTGGCA  
 ACATCTTGAAGAGGCACGCAGCTGATCAAGCAAGGAAGGCTGTGATGATGCAATGAAGTCAACATGGAAAT  
 GGCTGAAAACGACCCAGTCAGTAAGATCTTCTTTGAGCAAGGAACATACCAGTGTCTAGAGAAGTGTGGT  
 ACTGTGGCCCTACCAATTATGCGCAGAGGGGGCGACTTGAGCACCCTGTGTTTGTGACTTCAGGACAG  
 AAGACGGCACAGCCAATGCTGGGTCTGATTATGAATTCACGGAAGGGACTGTGATCTTCAAACAGGGGA  
 GACCCAGAAGGAAATCAGAGTTGGCATCATTGATGATGATATCTTTGAAGAAGATGAAAACCTCCTTGTG  
 CATCTTAGCAATGTCAGAGTCTCTTTCAGATGTTTCAGAAGATGGCATACTAGAATCCAATCACGCTTCTT  
 CAATTGCTTGTCTGGGTACCCAGCACTGCCACCATAACCAATTTTGTGATGACCATGCAGGCATCTT  
 TACATTTGAGGAACCCGTGACTCACGTGAGCGAGAGCATTGGCATCATGGAGGTGAAGGTTTTGAGAACC  
 TCTGGAGCTCGAGGAAATGTTATCATTCCCTACAAAACCTATTGAAGGCACAGCCGAGGTGGAGGGGAAG  
 ACTTTGAGGACACCTGTGGAGAGCTCGAATTCAGAACGATGAAATAGTCAAAACAATATCAGTCAAGGT  
 AATCGATGACGAGGAGTATGAGAAAAACAAGACCTTCTTCATTGAGATTGGAGAGCCCGCTCGGTGGAG  
 ATGAGTGAGAAGAAAGGTGGCTTACATTAACAGGCCAACCTATCTTCAGGAAGGTCCATGCTAGAGATC  
 ATCCGATTCCTCTACTGTAATCACCATCTCAGAGGAATATGATGACAAGCAGCCACTGACCAGCAAAGA  
 AGAGGAGGAGAGGCGCATTGCGGAAATGGGGCGCCCATCCTAGGCGAGCACACCAAGCTGGAGGTGATC  
 ATCGAAGAGTCTTACGAATTCAGAGCACTGTGGACAACTCATTAAAGAAGACGAACCTGGCCCTTGTGG  
 TGGGACCAACAGCTGGAGAGAGCAGTTTATCGAAGCCATCACTGTCAGCGCTGGGAAGATGACGATGA  
 TGATGAATGTGGGAGGAGAAGCTGCCCTCCTGTTTTGATTACGTGATGCACTTTCTCACAGTGTCTGG  
 AAGGTTCTGTTTGCCTTCGTCCACCTACAGAATACTGGAATGGCTGGCCTGCTTCATTGTCTCCATCC  
 TCATGATCGGCCTACTGACCGCCTTCAATGGAGACCTGGCTTCCCACTTTGGCTGCACCATTGGTCTGAA  
 AGATTCGGTACTGCCGTTGTGTTTGTGCTCTTGAACCTCGGTGCCAGACACATTTGCCAGCAAAGTA  
 GCAGCTACCCAGGACCAGTATGCAGATGCGTCTATAGGCAATGTCAGTGAAGCAATGCTGTGAATGTCT  
 TCCTGGGAATCGGCGTGGCCTGGTCCATTGCTGCCATCTACCATGCGGCCAACGGGAACAGTTCAAAGT  
 GTCCCCGGCACGCTAGCTTTCTGTCACTCTTCACTATTTTGTCTTTCATCAACGTGGGGTGTGCTG  
 CTGTATCGGCGGAGGCCAGAAATAGGAGGTGAGCTGGGAGGGCCCGGACTGCCAAGCTCCTCACATCTT  
 CCCTGTTTGTGCTCCTGTGGCTTGTACATTTTCTTCTCCTCCCTGGAAGCCTACTGCCACATAAAGGG  
 CTTT

**ACGCGT**ACGCGGCCGCTCGAG - GFP Tag - GTTTAA

**Protein Sequence:** >MG225695 representing NM\_001112798  
 Red=Cloning site Green=Tags(s)

MLRLSLPPNVSMGFRLVALVALLFSHVDHITADTEAETGGNETTECTGSYYCKKGVILPIWEPQDPSFGD  
 KIARATVYFVAMVYMFVFLGVSIIADRFMSSIEVITSQEITIKKPNGETTKTTVRIWNETVSNLTLMALG  
 SSAPEILLSVIEVCGHNFTAGDLGPSTIVGSAFNMFIIALCVYVVPDGETRKIKHLRVFFVTAAWSIF  
 AYTWLYIILSVSSPGVVEVWEGLLTFFFPICVVFVAVWADRRLLFYKYVYKRYRAGKQRGMIEHEGDRP  
 ASKTEIEMDGKVVNSHVDNFDGALVLEVDERDQDDEEARREMARILKELKQKHPEKEIEQLIELANYQV  
 LSQQQKSRAFYRIQATRLMTGAGNILKRHAADQARKAVSMHEVNMEMAENDPVSKIFFEQGTQCLENCG  
 TVALTIMRRGGDLSTTVFVDFRTEGDTANAGSDYEFTEGTVIFKPGETQKEIRVGIIDDDIFEEDENFLV  
 HLSNVRVSSDVSDEGILES NHASSIACLGSPSTATITIFDDDHAGIFTFEEPVTHVSESIGIMEVKVLR  
 SGARGNVIIPYKTIEGTARGGGEDFEDTCGELEFQNDIEVKTISVKVIDDEEYEKNKTFEIEIGEPRLVE  
 MSEKKGFFLTGQPIFRKVHARDHPIPVSTVITISEEYDDKQPLTSKEEEERRIAEMGRPILGEHTKLEVI  
 IEESYEFKSTVDKLIKKNLALVVGTSWREQFIEAITVSAGEDDDDDDECGEELPSCFDYVMHFLTVFW  
 KVLFAFVPPTEYWNGWACFIVSILMIGLLTAFIGDLASHFGCTIGLKDSVTAVFVALGTSVPDTPASKV  
 AATQDQYADASIGNVTGSNAVNVFLGIGVAWSIAAIYHAANGEQFKVSPGTLAFSVTLFTIFAFINVGVL  
 LYRRRPEIGGELGGPRTAKLLTSSLFVLLWLLYIFFSSLEAYCHIKGF

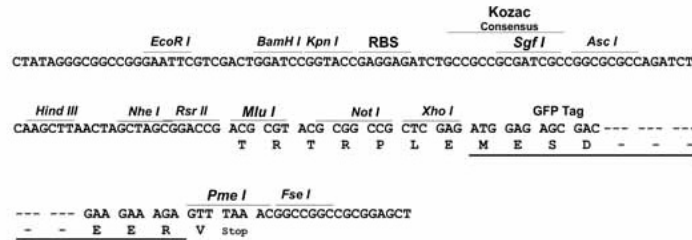
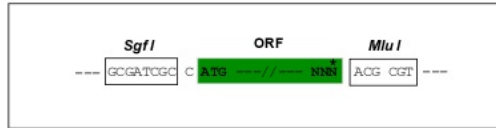
TRTRPLE - GFP Tag - V

**Restriction Sites:**

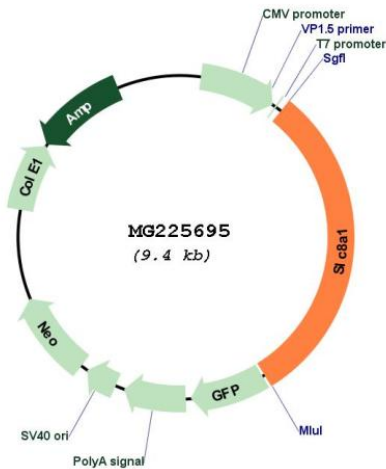
SgfI-MluI

**Cloning Scheme:**

Cloning sites used for ORF Shuttling:



Plasmid Map:



ACCN: NM\_001112798

ORF Size: 2874 bp

OTI Disclaimer: The molecular sequence of this clone aligns with the gene accession number as a point of reference only. However, individual transcript sequences of the same gene can differ through naturally occurring variations (e.g. polymorphisms), each with its own valid existence. This clone is substantially in agreement with the reference, but a complete review of all prevailing variants is recommended prior to use. [More info](#)

OTI Annotation: This clone was engineered to express the complete ORF with an expression tag. Expression varies depending on the nature of the gene.

Components: The ORF clone is ion-exchange column purified and shipped in a 2D barcoded Matrix tube containing 10ug of transfection-ready, dried plasmid DNA (reconstitute with 100 ul of water).

Reconstitution Method:

1. Centrifuge at 5,000xg for 5min.
2. Carefully open the tube and add 100ul of sterile water to dissolve the DNA.
3. Close the tube and incubate for 10 minutes at room temperature.
4. Briefly vortex the tube and then do a quick spin (less than 5000xg) to concentrate the liquid at the bottom.
5. Store the suspended plasmid at -20°C. The DNA is stable for at least one year from date of shipping when stored at -20°C.

RefSeq: [NM\\_001112798.2](#), [NP\\_001106269.1](#)

RefSeq Size: 18563 bp

RefSeq ORF: 2877 bp

Locus ID: 20541

Cytogenetics: 17 51.29 cM

**Gene Summary:**

Mediates the exchange of one Ca(2+) ion against three to four Na(+) ions across the cell membrane, and thereby contributes to the regulation of cytoplasmic Ca(2+) levels and Ca(2+)-dependent cellular processes (PubMed:8659820). Contributes to Ca(2+) transport during excitation-contraction coupling in muscle. In a first phase, voltage-gated channels mediate the rapid increase of cytoplasmic Ca(2+) levels due to release of Ca(2+) stores from the endoplasmic reticulum. SLC8A1 mediates the export of Ca(2+) from the cell during the next phase, so that cytoplasmic Ca(2+) levels rapidly return to baseline (PubMed:10967099). Required for normal embryonic heart development and the onset of heart contractions (PubMed:10967099).[UniProtKB/Swiss-Prot Function]