

Product datasheet for **MG225685**

Chat (NM_009891) Mouse Tagged ORF Clone

Product data:

Product Type:	Expression Plasmids
Product Name:	Chat (NM_009891) Mouse Tagged ORF Clone
Tag:	TurboGFP
Symbol:	Chat
Synonyms:	B230380D24Rik
Mammalian Cell Selection:	Neomycin
Vector:	pCMV6-AC-GFP (PS100010)
E. coli Selection:	Ampicillin (100 ug/mL)



[View online »](#)

ORF Nucleotide Sequence:

>MG225685 representing NM_009891
 Red=Cloning site Blue=ORF Green=Tags(s)

TTTTGTAATACGACTCACTATAGGGCGGCCGGAATTCGTCGACTGGATCCGGTACCGAGGAGATCTGCC
 GCC**CGGATCGCC**

ATGCCTATCCTGGAAAAGTCCCCCAAAGATGCCTGTACAAGCTTCTAGCTGTGAGGAGGTGCTGGACT
 TACCTAAGTTGCCAGTGCCCCACTGCAGCAAACCTGGCCACCTACCTTCAGTGCATGCAACACCTGGT
 ACCTGAAGAGCAGTTCAGGAAGAGCCAGGCCATTGTGAAGCGTTTGGGGCCCTGGTGGCCTGGGTGAG
 ACCCTGCAGGAAAAGCTCTTGGAGAGACAGGAGAAGACAGCCAATTGGGTCTCTGAATACTGGTGAATG
 ACATGTATCTAAACAACCGCCTGGCCCTGCCAGTCAACTCTAGCCCTGCTGTGATCTTTGCTCGGCAGCA
 CTTCCAAGACACCAATGACCAGCTAAGGTTTGCAGCCAGCCTCATCTCTGGTGTGCTTAGCTACAAGGCT
 CTGCTGGACAGCAATCCATTCCACTGACTGGCCAAGGGCAGCTCTCAGGGCAGCCTCTCTGTATGA
 AGCAGTACTACAGACTCTTCTCATCATACCGGCTTCTGGCCATACCCAGGACACACTGGTGGCCAGAA
 GAGCAGTATCATGCCTGAGCCCGAGCATGTCATCGTGGCCTGCTGCAACCAGTCTTTTGTCTTGGATGTT
 GTCAATAATTTCCGCCGTCTCAGTGAGGGTGTCTGTTCACTCAGTTGAGAAAGATAGTCAAATGGCGT
 CCAACGAGGATGAACGCCTGCCTCCAATCGGCCTGCTGACGTGACGCGGAGGAGCGAGTGGGCCAAGGC
 CAGGACGGTCTCTTAAAGACTCCACCAACCGGGACTCCCTGGACATGATCGAGCGCTGCATCTGCCTG
 GTATGCCTGGATGGTCCAGGCACTGGAGACCTCAGTGACACACAGGGCCCTCCAGTCCCTCATGGTG
 GAGGCTGCAGCTTGAATGGAGCGAATCGTTGGTATGACAAGTCCCTGCAGTTTGTGGTGGGCCGAGATGG
 CACCTGCGGTGTGGTGTGTGAGCACTCCCTTTTATGATGGCATCGTCTGGTGCAGTGCACGGAGCACCTG
 CTGAAACATATGATGACAGGCAACAAGAAGCTCGTCCGAGCTGACTCAGTGAAGTGAACCTCCCTGCCA
 GAAGGCTGAGGTGAAAATGTTCCCGAGAACTCAAGCCATCTCGCCTCCTCGGCAGAGAAAACCTCAAAG
 AATCGTAAAGAATCTGGATTTTCATTGTTTATAAGTTTGACAACATATGGGAAAACATTTATTAAGAAGCAG
 AAATGCAGTCTGATGGCTTCATCCAGGTGGCCCTCCAGCTGGCTTACTACAGGCTTTACCAGAGGCTGG
 TGCCACCTATGAGAGTGCATCCATCCGCCGCTTCCAGGAAGTTCGGGTGGACAACATCAGATCGGCCAC
 TCCTGAGGCTCTGGCTTTTGTGCAAGCCATGACTGACCACAAGGCTGCCGTGCTGGCTTCTGAGAACTG
 CAGCTGCTGCAGAGGGCCATCCAGGCCAAACTGAGTACACAGTCATGGCCATAACCGGCATGGCCATTG
 ACAACCATCTTCTGGCACTGAGGGAGCTGGCCGAGACCTGTGCAAGAGCCACCTGAGATGTTTATGGA
 TGAACATACCTGATGAGCAACCGGTTTATTCTCTCCACCAGCCAGGTGCCACGACCATGGAGATGTTT
 TGCTGTTATGGCCCTGTGGTACCAATGGGTATGGAGCCTGTTATAACCCCGAGCCTGAGGCCATCACT
 TCTGCATCTCCAGCTTTCACGGCTGCAAAGAGACCTCATCTGTGGAGTTTGCAGAAGCGGTGGGAGCGAG
 CCTTGTGACATGAGAGACCTCTGTAGTTTCAGGCGAGCCTGCTGAAGGCAAGCCACCAACAGCAAAGGAA
 AGAGCTAGAGGCCCAACCAAGCAAGCAATCTTGACTACTCCAC

ACGCGTACGCGGCCGCTCGAG - GFP Tag - GTTTAA

Protein Sequence:

>MG225685 representing NM_009891
 Red=Cloning site Green=Tags(s)

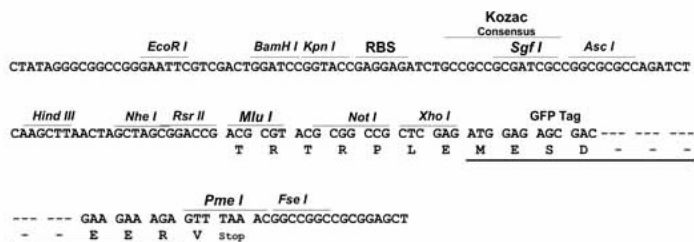
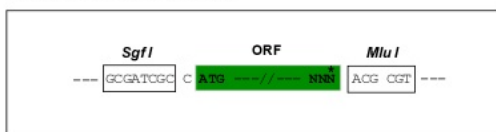
MPILEKVPKMPVQASSCEEVLDLPLKLPVPLQQLATYLCMQHLVPEEQFRKSQAIVKRFGAPGGLGE
 TLQEKLLERQEKANWVSEYWLNDMYLNNRLALPVNSSPAVIFARQHFQDTNDQLRFAASLISGLVSYKA
 LLDSQSIPTDWAKGQLSGQPLCMKYRFLSSYRLPGHTQDTLVAQKSSIMPEPEHVIVACCNQFFVLDV
 VINFRRLSEGDLFTQLRKIVKMASNEDERLPPIGLLTSDGRSEWAKARTVLLKDSNDRSLDMIERICL
 VCLDGPGTGDLSDTHRALQLHGGGCSLNGANRWYDKSLQFVVGRTGTCGVVCEHSPFDGIVLVQCTEHL
 LKHMMTGNKLVRAHSVSELPAARRLRWKSPETQGHASSAEKLRIVKNLDFIVYKFDNYGKTFIKKQ
 KCSPDGFIQVALQLAYYRLYQRLVPTYESASIRRFQEGRVDNIRSATPEALAFVQAMTDHKA AVLASEKL
 QLLQRAIQAQTEYTVMAITGMAIDNHLLALRELARDLCKEPPMFMDETYLMNSRFILSTSQVPTTMMEMF
 CCYGPVVPNGYACYNPQPEAITFCISSFHGKETSSVEFAEAVGASLVDMRDLCSSRQPAEGKPPTAKE
 RARGPTKPSNLDYSH

TRTRPLE - GFP Tag - V

Restriction Sites: SgfI-MluI

Cloning Scheme:

Cloning sites used for ORF Shutting:



ACCN: NM_009891

ORF Size: 1935 bp

OTI Disclaimer: The molecular sequence of this clone aligns with the gene accession number as a point of reference only. However, individual transcript sequences of the same gene can differ through naturally occurring variations (e.g. polymorphisms), each with its own valid existence. This clone is substantially in agreement with the reference, but a complete review of all prevailing variants is recommended prior to use. [More info](#)

OTI Annotation: This clone was engineered to express the complete ORF with an expression tag. Expression varies depending on the nature of the gene.

Components: The ORF clone is ion-exchange column purified and shipped in a 2D barcoded Matrix tube containing 10ug of transfection-ready, dried plasmid DNA (reconstitute with 100 ul of water).

Reconstitution Method:

1. Centrifuge at 5,000xg for 5min.
2. Carefully open the tube and add 100ul of sterile water to dissolve the DNA.
3. Close the tube and incubate for 10 minutes at room temperature.
4. Briefly vortex the tube and then do a quick spin (less than 5000xg) to concentrate the liquid at the bottom.
5. Store the suspended plasmid at -20°C. The DNA is stable for at least one year from date of shipping when stored at -20°C.

RefSeq: [NM_009891.2](#), [NP_034021.1](#)

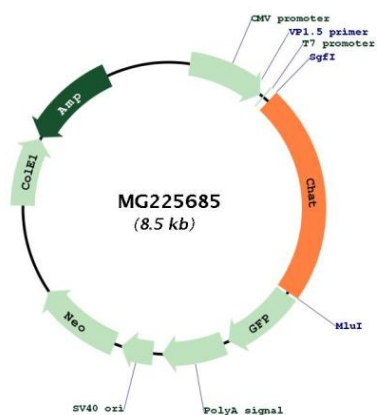
RefSeq Size: 2810 bp

RefSeq ORF: 1938 bp

Locus ID: 12647

Cytogenetics: 14 19.4 cM

Product images:



Circular map for MG225685