

## Product datasheet for **MG225679**

### Oxtr (NM\_001081147) Mouse Tagged ORF Clone

#### Product data:

Product Type:	Expression Plasmids
Product Name:	Oxtr (NM_001081147) Mouse Tagged ORF Clone
Tag:	TurboGFP
Symbol:	Oxtr
Synonyms:	OTR
Mammalian Cell Selection:	Neomycin
Vector:	pCMV6-AC-GFP (PS100010)
E. coli Selection:	Ampicillin (100 ug/mL)
ORF Nucleotide Sequence:	>MG225679 representing NM_001081147 Red=Cloning site Blue=ORF Green=Tags(s)

TTTTGTAATACGACTCACTATAGGGCGGCCGGAATTCGTCGACTGGATCCGGTACCGAGGAGATCTGCC  
GCC**CGATCGCC**

ATGGAGGGCAGCCCGCAGCCAACCTGGAGTATCGAGTTGGACCTCGGGAGTGGAGTGCCACCAGGGGCGG  
AGGGTAACCTCACGGCCGGGCCACGACGCAACGAGGCCCTGGCGCGCGTGGAGTGCGCGTCTGTG  
TCTCATACTGTTCTGGCTCTGAGTGGCAACGCGTGCCTGCTGCTGGCGTGCCTACGACGCGCCACAAG  
CACTCGCGCTCTTCTTTTTCATGAAGCACCTGAGCATCGCCGACCTGGTGGTGGCCGTGTTCCAGGTTCC  
TCCCGCAGCTGCTGTGGACATCACCTCCGCTTCTACGGGCCGACCTGCTGTGCTGCTGGTCAAATA  
CTTGCAGGTGGTGGCATGTTCCGCTCCACCTACCTGCTGTTGCTGATGTCGCTCGACCGCTGCCTGGCC  
ATCTGCCAGCCGCTGCGCTCACTGCGCCGCCGAACCGACCGCCTGGCGGTGCTGGCGACGTGGCTCGGCT  
GCCTGGTGGCCAGCGTGGCCAGGTGCACATTTCTCGCTGCGCGAAGTGGCGGACGGCGTCTTCGATTG  
CTGGGCGGTCTTCATCCAGCCCTGGGGACCCAAGGCCTACGTACGTGGATCACGCTCGCCGTCTACATT  
GTACCGGTTCATCGTGTGGCCGCTGCTATGGTCTCATCAGTTCAGATCTGGCAGAATCTGCGACTCA  
AGACGGCAGCCGCGCGGCGAGCTGCCGAGGGGAGTGACGACGCGCGTGGAGCTGGCCGTGCGCGCTTGGC  
ACGGGTTCAGTGTCAAGCTTATCTCCAAGGCCAAAATCCGCACAGTGAAGATGACCTTCATCATTGTT  
CTGGCCTTCATCGTGTGGTGGACGCTTCTTCTCGTGCAGATGTGGAGCGTGGGACGTCAATGGCC  
CCAAAGAAGCTTCTGCCTTCATCATTGCCATGCTCTTGGCCAGCCTCAACAGCTGCTGCAACCCATGGAT  
CTACATGCTCTTACGGGCCATCTTCCACGAACTCGTGCAGCGCTTCTCTGCTGCTGCTCGGTAC  
CTGAAGGGCAGCCGCGCTGGAGAGACGAGCATTAGCAAGAAAAGCAACTCCTCCACCTTCGCTCCTGAGTC  
GTCGCAGCTCGAGTCAGAGGAGCTGTTCTCAACCATCCTCGGCA

AGCGGACCGACGCGTACGCGGCCGCTCGAG - GFP Tag - GTTTAA



[View online »](#)

**Protein Sequence:** >MG225679 representing NM\_001081147  
Red=Cloning site Green=Tags(s)

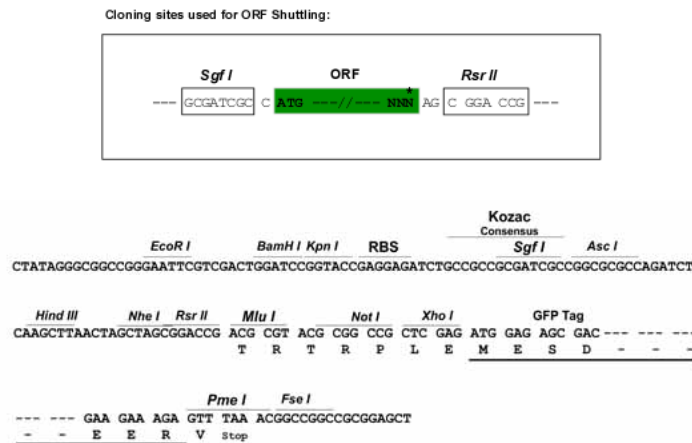
```
MEGTPAANWSIELDLGSGVPPGAEGNLTAGPPRRNEALARVEVAVLCLILFLALSGNACVLLALRTTRHK
HSRLFFFMKHL SIADLVAVFQVLPQLLDITFRFYGPDLLCRLVKYLQVVMFASTYLLLLMSLDRCLA
ICQPLRSLRRRTDRLAVLATWLGLVASVPQVHIFSLREVADGVFDCWAVFIQPWGPKAYVTWITLAVYI
VPVIVLAACYGLISFKIWQNLRLKTAIAAAAAAEGSDAAGGAGRAALARVSSVKLISKAKIRTVMTFIIV
LAFIVCWTPFFVFQMWVWDVNPKEASAFIIAMLLASLNSCCNPWIYMLFTGHLFHEL VQRFLCCSARY
LKGSRPGETSISKKSNSSTFVLSRRSSSQRSCSQPSSA
```

SGPTRRRLE - GFP Tag - V

**Chromatograms:** [https://cdn.origene.com/chromatograms/ja1769\\_e12.zip](https://cdn.origene.com/chromatograms/ja1769_e12.zip)

**Restriction Sites:** SgfI-RsrII

**Cloning Scheme:**



**ACCN:** NM\_001081147

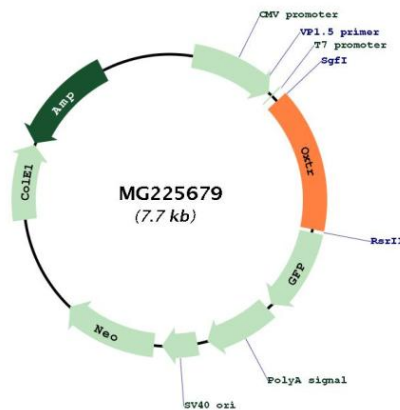
**ORF Size:** 1164 bp

**OTI Disclaimer:** Due to the inherent nature of this plasmid, standard methods to replicate additional amounts of DNA in *E. coli* are highly likely to result in mutations and/or rearrangements. Therefore, OriGene does not guarantee the capability to replicate this plasmid DNA. Additional amounts of DNA can be purchased from OriGene with batch-specific, full-sequence verification at a reduced cost. Please contact our customer care team at [custsupport@origene.com](mailto:custsupport@origene.com) or by calling 301.340.3188 option 3 for pricing and delivery.

The molecular sequence of this clone aligns with the gene accession number as a point of reference only. However, individual transcript sequences of the same gene can differ through naturally occurring variations (e.g. polymorphisms), each with its own valid existence. This clone is substantially in agreement with the reference, but a complete review of all prevailing variants is recommended prior to use. [More info](#)

- OTI Annotation:** This clone was engineered to express the complete ORF with an expression tag. Expression varies depending on the nature of the gene.
- Components:** The ORF clone is ion-exchange column purified and shipped in a 2D barcoded Matrix tube containing 10ug of transfection-ready, dried plasmid DNA (reconstitute with 100 ul of water).
- Reconstitution Method:**
1. Centrifuge at 5,000xg for 5min.
  2. Carefully open the tube and add 100ul of sterile water to dissolve the DNA.
  3. Close the tube and incubate for 10 minutes at room temperature.
  4. Briefly vortex the tube and then do a quick spin (less than 5000xg) to concentrate the liquid at the bottom.
  5. Store the suspended plasmid at -20°C. The DNA is stable for at least one year from date of shipping when stored at -20°C.
- RefSeq:** [NM\\_001081147.2](#)
- RefSeq Size:** 4568 bp
- RefSeq ORF:** 1167 bp
- Locus ID:** 18430
- UniProt ID:** [P97926](#)
- Cytogenetics:** 6 E3
- Gene Summary:** Receptor for oxytocin. The activity of this receptor is mediated by G proteins which activate a phosphatidylinositol-calcium second messenger system.[UniProtKB/Swiss-Prot Function]

**Product images:**



Circular map for MG225679