

Product datasheet for **MG225652**

Abl1 (NM_00112703) Mouse Tagged ORF Clone

Product data:

Product Type: Expression Plasmids
Product Name: Abl1 (NM_00112703) Mouse Tagged ORF Clone
Tag: TurboGFP
Symbol: Abl1
Synonyms: Abl; AI325092; c-Abl; E430008G22Rik
Mammalian Cell Selection: Neomycin
Vector: pCMV6-AC-GFP (PS100010)
E. coli Selection: Ampicillin (100 ug/mL)
ORF Nucleotide Sequence: >MG225652 representing NM_00112703
Red=Cloning site Blue=ORF Green=Tags(s)

TTTTGTAATACGACTCACTATAGGGCGGCCGGAATTCGTCGACTGGATCCGGTACCGAGGAGATCTGCC
GCC**CGATCGCC**

ATGGGGCAGCAGCCTGAAAAAGTTCTTGGGGACCAAAGAAGGCCTAGTTTGCCCGCCTGCATTTTATCA
AAGGGGCAGGGAAGAGGGACTCATCGAGGCATGGGGCCACACTGCAATGTCTTTGTGGAACACGAAGC
CCTGCAGAGGCCAGTGGCATCTGACTTTGAGCCCCAGGGTCTCAGCGAAGCAGCTCGATGGAACCTCAAG
GAAAACCTTCTTGCTGGGCCAGTGAAAATGACCCCAACCTTTTTGTGGCACTCTATGATTTGTGGCCA
GTGGAGATAACACTCTCAGCATCTAAAGGTGAAAAGCTCCGGTCTTGGGTTATAATCACAATGGGGA
ATGGTGTGAAGCCAAACGAAAAATGGCCAAGGATGGGTCCCAAGCAACTACATCACCCCGTCAACAGC
CTGGAGAAACATTCTGTATCATGGCCCTGTATCTCGGAATGCTGCTGAGTATCTGCTGAGCAGCGGAA
TCAACGGCAGCTTCTTAGTGCGGGAGAGTGAGAGTAGCCCTGGCCAGAGATCCATCTCGTGCAGGATGA
AGGGAGGGTGTACCACTACAGGATCAACACTGCCTCTGATGGCAAGCTGTACGTGTCTCCGAGAGCCGC
TTCAACACTCTGGCTGAGTTAGTTCACCATCACTCCACGGTGGCTGATGGCCTCATCACCACACTCCACT
ACCCAGCTCCCAAGCGCAACAAGCCCACTATCTACGGTGTGTCCCCAACTACGACAAGTGGGAAATGGA
GCGCACCGACATACCATGAAGCACAAGTTGGTGGAGGCCAGTACGGGGAGGTGTACGAGGGCGTTTGG
AAGAAGTACAGCCTCACTGTGGCCGTGAAGACCTTGAAGGAGGACACCATGGAGGTGGAGGATTCCTGA
AGGAAGCGCGGTGATGAAGGAGATCAAACACCCTAACCTGGTGCAGCTGCTAGGGGTGTGTACCGGGA
ACCACCATTCTACATAATCACTGAGTTCATGACCTATGGGAACCTGCTGGACTACCTGAGGGAGTGAAC
CGGCAGGAGGTGAGCGCCGTGGTACTGCTCTACATGGCCACACAGATCTCATCAGCCATGGAGTACTTGG
AGAAGAAGAACTTCATCCACAGAGACCTTGTGCCGGAAGTGCCTGGTAGGGGAAAACCACTTGGTGAA
GGTGGCTGATTTTGGCCTGAGCAGGTTGATGACAGGGGACACCTACACGGCCATGCTGGAGCCAAATTC
CCCATCAAATGGACCGCACCTGAGAGCCTGGCCTACAACAAGTTCTCCATCAAGTCGGACGTGTGGGCAT
TTGGAGTATTGCTCTGGGAGATTGCTACCTATGGCATGTCACCTTACCCGGAATTGACCTGTCTCAGT
TTATGAGTCTGCGAAAAAGACTACCGCATGGAGCGCCCTGAAGGCTGCCCGGAGAAGGTCTACGAGCTC



```

ATGCGAGCATGTTGGCAGTGAACCCCTCTGACCGGCCCTCCTTTGCTGAAATCCACCAAGCCTTTGAAA
CCATGTTCCAGGAATCCAGTATCTCAGATGAGGTGGAGAAGGAGCTGGGGAAACGAGGCACGAGAGGAGG
TGCTGGGAGTATGCTGCAGGCCCCAGAGCTGCCACCAAGACCAGAACCTGCAGGAGAGCAGCTGAGCAG
AAAGATGCGCCTGACACCCCTGAGCTGCTCCACACGAAGGGCCTGGGAGAAAAGCGATGCACTGGACAGTG
AGCCTGCTGTATCGCCACTGCTTCTCGAAAGAGCGCGGGCCCCAGACGGCAGCCTAAATGAAGATGA
GCGCCTTCTCCCCAGAGACAGAAAAGACCAACCTGTTACGCGCTTGTATCAAGAAGAAGAAGAAAATGGCG
CCGACGCCCCCTAAGCGCAGAGTTCTTCCGAGAGATGGATGGCCAGCCAGACCCGACAGAGGGGCTAGTG
AGGATGACAGCAGGGAACTCTGCAATGGACCACAGCTCTCACCTCAGACGCAGCAGAGCCTACCAAGTC
CCCAAAGGCCAGCAATGGGGCTGGCGTCCCTAATGGAGCCTTCCGGGAGCCGGGCAACTCAGGCTTCCGT
TCTCCCCACATGTGAAAAAGTCCAGCACACTGACCGGGAGCCGCTGGCTGCTGCCAAGAGGAGAGCG
GCATGAGTCCAGTAAGCGCTTCTGCGTTCCTGTTTGGCCTCTGCATGCCCATGGGGCAAGGGACAC
AGAGTGGCGGTGCGTACGCTGCCTCGAGACTGCCGTCTGTGGCAAGCAGTTTACTCATCCACCTTT
GGAGGGCACAAAAGCGAAAAGCCAGCTCTGCCTCGAAACGCACCAGTGAAGCAGGTCTGAGCAGGTGG
CCAAAAGCACGGCGATGCCCTTCCCGGCTGGTGAAGAAGAACGAGGAGGCTGTGAAGAAGGCTTCAA
AGACACAGAATCCAGCCCTGGCTCCAGCCCTCCAGCTTGACTCCAAACTCCTCCGAGGCAGGCTCACT
GCCTCTCCTTCTCTGGCCTCTCTCACAAGGAAGAGGCCACCAAGGGCAGTGCCTCAGGCATGGGGACTC
CGGCCACTGCAGAGCCAGCACCCCCAGCAACAAGTGGGCTCAGCAAGGCCTCCTCTGAGGAGATGCG
CGTAAGGAGGCACAAGCAGACTCGGAGTCCCCAGGGAGAGACAAGGGGCGACTGGCTAAGCTCAAGCCT
GCCCGCCGCTCCTCTGCCTGCACAGGAAAAGCAGGCAAGCCCGCACAGAGCCCAGCCAAGAGGGCCG
GGGAGGCAGGGGGGGCCACAAAGACAAAATGCACGAGTCTGGCTATGGATGCTGTGAACACTGACCCAC
CAAGGCCGGCCACCTGGAGAAGGACTGAGAAAGCCTGTGCCCATCTGTGCCAAAGCCCCAGTCGAGC
GCTAAGCCTCCAGGACTCCACCAGCCGGTCTCCACCCCTCCACAGCACCAGCTCCTTACCCTGG
CTGGGGACCAGCAGCCATCTTCTGCCGCTTATCCCCCTCATCAACCCGTGTGTCTCTTAGGAAGAG
CCGCCAGCCGCCAGAGCGCATTGCCAGTGGCACCATACCAAGGGTGTGGTTCTGGAGGCTGAGGCC
CTGTGCCTTGCCATCTCCGGAAGTCCAGCAGATGGCCAGCCACAGTGTGTACTGGAGGCTGGCAAGA
ACCTGTACACTTTCTGTGTGAGCTATGTGGACTTATCCAGCAGATGAGGAACAAGTTTGCCTTCCGTGA
GGCTATCAACAAGCTGGAGAGCAACCTCCGAGAGCTGCAGATCTGCCCTGCCACAGCCTCCAGTGGGCCA
GCTGCCACCAAGACTTCAGCAAGCTGCTCAGCTCTGTGAAGGAGATCAGCGACATTGTCCGGAGG

```

ACGCGTACGCGGCCGCTCGAG – GFP Tag – GTTTAA

Protein Sequence:

>MG225652 representing NM_001112703
 Red=Cloning site Green=Tags(s)

```

MGQQPGKVLGDQRRPSLPALHFIKGAGKRDSSRHGGPHCNVFEHEALQRPVASFEPQGLSEARWNSK
ENLLAGPSENDPNLFVALYDFVASGDNTLSITKGEKLRVLGYNHNGEWCEAQTKNGQGWVPSNYITPVNS
LEKHSWYHGPVSRNAEYLLSSGINGSFLVRESESSPGQRSISLRYEGRVYHYRINTASDGKLYVSESER
FNTLAELVHHHSTVADGLITTLHYPAPKRNKPTIYGVSPNYDKWEMERTDITMKHKLGGGQYGEVYEGVW
KKYSLTVAVKTLKEDTMEVEEFLKEAAVMKEIKHPNLVQLLGVCTREPPFYIITEFMTYGNLLDYLRECN
RQEVSAVVLLYMATQISSAMEYLEKKNFIHRDLAARNCLVGENHLYKVADFGLSRLMTGDTYTAHAGAKF
PIKWTAPESLAYNKFSIKSDVWAFGVLLWEIATYGMSPYPGIDLQVYELLEKDYRMERPEGCPEKYYEL
MRACWQWNPDRPSFAEIQHAFETMFQESSISDEVEKELKGRGTRGGAGSMLQAPELPTKTRTCRRAAEQ
KDAPDTPPELLHTKGLGESDALDSEPAVSPLLPRKERGPPDGSLNEDERLLPRDRKTNLFSALIKKKKMA
PTPPKRSSSFREMDGQPDRRGASEDDREL CNGPPALTSDAAEPTKSPKASNGAGVNPNGAFREPGNSGFR
SPHMWKKSSLTGSRLAAAEESGMSSSKRFLRSCSASCMPHGARDTEWRSVTLPRDLPSAGKQFDSSTF
GGHKSEKPALPRKRTSESRSEQVAKSTAMPPPRLVKKNEEAAEEGFKDTESSPGSSPPLTPKLLRRQVT
ASPSSGLSHKEEATKGSASGMGTPATAEAPPNSNKVGLSKASSEMRVRRHKHSSSESPGRDKGRLAKLKP
APPPPPACTGKAGKPAQSPSQEAGEAGGPTKTKCTSLAMDVNTDPTKAGPPGGLRKPVPSPVKPQST
AKPPGPTPTSPVSTPSTAPAPSPLAGDQQPSSAAFIPLISTRVSLRKTQPPERIASGTITKGVVLDSTEA
LCLAIRNSEQMASHSAVLEAGKNLYTFVSYVDSIQQMRNKFAFREAINKLESNLRELQICPATASSGP
AATQDFSKLLSSVKEISDIVRR

```

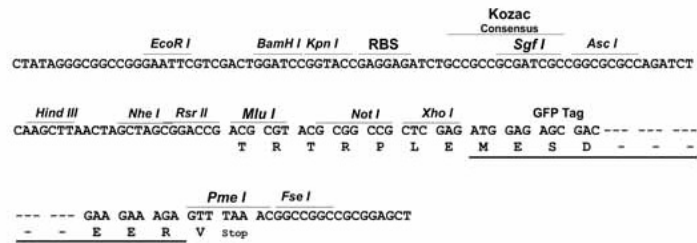
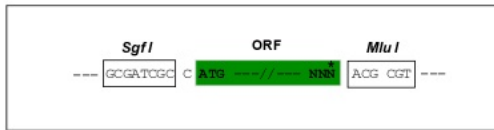
TRTRPLE – GFP Tag – V

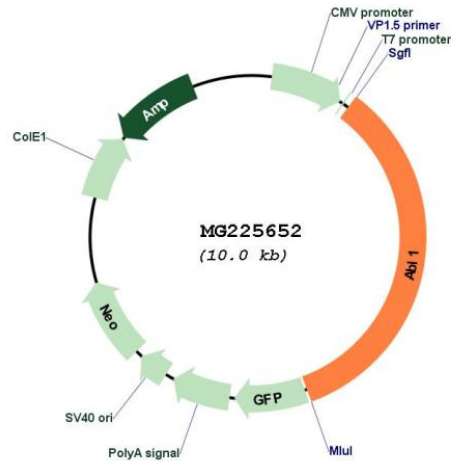
Restriction Sites:

SgfI-MluI

Cloning Scheme:

Cloning sites used for ORF Shuttling:



Plasmid Map:


ACCN: NM_001112703

ORF Size: 3426 bp

OTI Disclaimer: The molecular sequence of this clone aligns with the gene accession number as a point of reference only. However, individual transcript sequences of the same gene can differ through naturally occurring variations (e.g. polymorphisms), each with its own valid existence. This clone is substantially in agreement with the reference, but a complete review of all prevailing variants is recommended prior to use. [More info](#)

OTI Annotation: This clone was engineered to express the complete ORF with an expression tag. Expression varies depending on the nature of the gene.

Components: The ORF clone is ion-exchange column purified and shipped in a 2D barcoded Matrix tube containing 10ug of transfection-ready, dried plasmid DNA (reconstitute with 100 ul of water).

Reconstitution Method:

1. Centrifuge at 5,000xg for 5min.
2. Carefully open the tube and add 100ul of sterile water to dissolve the DNA.
3. Close the tube and incubate for 10 minutes at room temperature.
4. Briefly vortex the tube and then do a quick spin (less than 5000xg) to concentrate the liquid at the bottom.
5. Store the suspended plasmid at -20°C. The DNA is stable for at least one year from date of shipping when stored at -20°C.

RefSeq: [NM_001112703.2](#), [NP_001106174.1](#)

RefSeq Size: 7008 bp

RefSeq ORF: 3429 bp

Locus ID: 11350

UniProt ID: [P00520](#)

Cytogenetics: 2 B

Gene Summary:

Non-receptor tyrosine-protein kinase that plays a role in many key processes linked to cell growth and survival such as cytoskeleton remodeling in response to extracellular stimuli, cell motility and adhesion, receptor endocytosis, autophagy, DNA damage response and apoptosis. Coordinates actin remodeling through tyrosine phosphorylation of proteins controlling cytoskeleton dynamics like WASF3 (involved in branch formation); ANXA1 (involved in membrane anchoring); DBN1, DBNL, CTTN, RAPH1 and ENAH (involved in signaling); or MAPT and PXN (microtubule-binding proteins). Phosphorylation of WASF3 is critical for the stimulation of lamellipodia formation and cell migration. Involved in the regulation of cell adhesion and motility through phosphorylation of key regulators of these processes such as BCAR1, CRK, CRKL, DOK1, EFS or NEDD9. Phosphorylates multiple receptor tyrosine kinases and more particularly promotes endocytosis of EGFR, facilitates the formation of neuromuscular synapses through MUSK, inhibits PDGFRB-mediated chemotaxis and modulates the endocytosis of activated B-cell receptor complexes. Other substrates which are involved in endocytosis regulation are the caveolin (CAV1) and RIN1. Moreover, ABL1 regulates the CBL family of ubiquitin ligases that drive receptor down-regulation and actin remodeling. Phosphorylation of CBL leads to increased EGFR stability. Involved in late-stage autophagy by regulating positively the trafficking and function of lysosomal components. ABL1 targets to mitochondria in response to oxidative stress and thereby mediates mitochondrial dysfunction and cell death. In response to oxidative stress, phosphorylates serine/threonine kinase PRKD2 at 'Tyr-717' (By similarity). ABL1 is also translocated in the nucleus where it has DNA-binding activity and is involved in DNA-damage response and apoptosis. Many substrates are known mediators of DNA repair: DDB1, DDB2, ERCC3, ERCC6, RAD9A, RAD51, RAD52 or WRN. Activates the proapoptotic pathway when the DNA damage is too severe to be repaired. Phosphorylates TP73, a primary regulator for this type of damage-induced apoptosis. Phosphorylates the caspase CASP9 on 'Tyr-191' and regulates its processing in the apoptotic response to DNA damage. Phosphorylates PSMA7 that leads to an inhibition of proteasomal activity and cell cycle transition blocks. Regulates T-cell differentiation in a TBX21-dependent manner (PubMed:21690296). Phosphorylates TBX21 on tyrosine residues leading to an enhancement of its transcriptional activator activity (PubMed:21690296).[UniProtKB/Swiss-Prot Function]