

Product datasheet for **MG225650**

Abl1 (NM_009594) Mouse Tagged ORF Clone

Product data:

Product Type:	Expression Plasmids
Product Name:	Abl1 (NM_009594) Mouse Tagged ORF Clone
Tag:	TurboGFP
Symbol:	Abl1
Synonyms:	Abl; AI325092; c-Abl; E430008G22Rik
Mammalian Cell Selection:	Neomycin
Vector:	pCMV6-AC-GFP (PS100010)
E. coli Selection:	Ampicillin (100 ug/mL)
ORF Nucleotide Sequence:	>MG225650 representing NM_009594 Red=Cloning site Blue=ORF Green=Tags(s)

TTTTGTAATACGACTCACTATAGGGCGGCCGGAATTCGTCGACTGGATCCGGTACCGAGGAGATCTGCC
GCC**CGATCGCC**

ATGTTGGAGATCTGTTTGAAGTTGGTGGGCTGCAATCCAAGAAGGGGCTCTTTCGTCCTCCAGCTGCT
ACCTGGAAGAAGCCCTGCAGAGGCCAGTGGCATCTGACTTTGAGCCCCAGGGTCTCAGCGAAGCAGCTCG
ATGGAACCCAAGGAAAACCTTCTTGTGGGCCAGTAAAATGACCCCAACCTTTTGTGGCACTCTAT
GATTTTGTGGCCAGTGGAGATAACTCTCAGCATCACTAAAGGTGAAAAGCTCCGGTCTTGGTTATA
ATCACAATGGGGAATGGTGTGAAGCCAAACGAAAATGGCCAAGGATGGTCCCAAGCAACTACATCAC
CCCCGTCAACAGCCTGGAGAAACATTCTGGTATCATGGCCCTGTATCTCGGAATGCTGCTGAGTATCTG
CTGAGCAGCGGAATCAACGGCAGCTTCTTAGTGCGGGAGAGTGAGAGTAGCCCTGGCCAGAGATCCATCT
CGCTGCGGTATGAAGGGAGGGTGTACCACTACAGGATCAACACTGCCTCTGATGGCAAGCTGTACGTGTC
CTCCGAGAGCCGCTTCAACACTCTGGCTGAGTTAGTTCACCATCACTCCACGGTGGCTGATGGCCTCATC
ACCACACTCCACTACCCAGCTCCCAAGCGCAACAAGCCCACTATCTACGGTGTGTCCCCAACTACGACA
AGTGGGAAATGGAGCGCACCGACATCACCATGAAGCACAAGTTGGGTGGAGGCCAGTACGGGGAGGTGTA
CGAGGGCGTTTGAAGAAGTACAGCCTCACTGTGGCCGTGAAGACCTTGAAGGAGGACACCATGGAGGTG
GAGGAGTTCCTGAAGGAAGCGGGTGTGAAGGAGATCAAACCCCTAACCTGGTGCAGCTGCTAGGGG
TGTGTACCCGGAACCACATTCTACATAACTGAGTTCATGACCTATGGGAACCTGCTGGACTACCT
GAGGGAGTGAACCGGCAGGAGGTGAGCGCCGTGACTGCTCTACATGGCCACACAGATCTCATAGCC
ATGGAGTACTTGGAGAAGAAGAACTTATCCACAGAGACCTTGCTGCCCGGAACTGCCTGGTAGGGGAAA
ACCCTTGGTGAAGTGGCTGATTTTGGCTGAGCAGGTTGATGACAGGGGACACCTACACGGCCCATGC
TGGAGCCAAATCCCATCAAATGGACCGCACCTGAGAGCCTGGCTACAACAAGTTCTCCATCAAGTCG
GACGTGTGGCATTGGAGTATTGCTCTGGGAGATTGCTACCTATGGCATGTCACCTTACCCGGGAATTG
ACCTGTCTCAGGTTTATGAGCTGCTGAAAAAGACTACCGCATGGAGCGCCCTGAAGGCTGCCCGGAGAA
GGTCTACGAGCTCATGCGAGCATGTTGGCAGTGAACCCCTCTGACCGGCCCTCCTTTGCTGAAATCCAC



[View online >](#)

CAAGCCTTTGAAACCATGTTCCAGGAATCCAGTATCTCAGATGAGGTGGAGAAGGAGCTGGGAAACGAG
 GCACGAGAGGAGGTGCTGGGAGTATGCTGCAGGCCCCAGAGCTGCCACCAAGACCAGAACCTGCAGGAG
 AGCAGCTGAGCAGAAAGATGCGCCTGACACCCCTGAGCTGCTCCACACGAAGGGCCTGGGAGAAAGCGAT
 GCACTGGACAGTGAAGCTGTGTATCGCCACTGCTTCTCGGAAAGAGCGCGGGCCCCAGACGGCAGCC
 TAAATGAAGATGAGCGCCTTCTCCCAGAGACAGAAAGACCAACCTGTTACAGCGCTTTGATCAAGAAGAA
 GAAGAAAATGGCGCCGACGCCCTAAGCGCAGCAGTTCCTCCGAGAGATGGATGGCCAGCCAGACCCG
 AGAGGGCTAGTGAGGATGACAGCAGGGAACCTGCAATGGACCACCAGCTCTCACCTCAGACCGCAGCAG
 AGCCTACCAAGTCCCAAGGCCAGCAATGGGGCTGGCGTCCCTAATGGAGCCTTCCGGGAGCCGGGCAA
 CTCAGGCTTCCGTTCTCCCCACATGTGGAAAAAGTCCAGCACACTGACCGGGAGCCGCTGGCTGTGCC
 GAAGAGGAGAGCGGCATGAGCTCCAGTAAGCGCTTCTGCGTTCTTGTTCGGCCTCTGCATGCCCCATG
 GGGCAAGGGACACAGAGTGGCGTGGTACGCTGCCTCGAGACCTGCCGTCTGTGGCAAGCAGTTTGA
 CTCATCCACCTTTGGAGGGCACAAAAGCGAAAAGCCAGCTCTGCCTCGGAAACGCACCAGTGAGAGCAGG
 TCTGAGCAGTGGCCAAAAGCACGGCGATGCCCTCCCGGCTGGTGAAGAAGAACGAGGAGGCTGCTG
 AAGAAGGCTTCAAAGACACAGAATCCAGCCCTGGCTCCAGCCCTCCAGCTTGACTCCCAAACCTCTCCG
 CAGGCAGTCACTGCCTCTCTTCTCTGCGCTCTCTACAAGGAAGAGGCCACCAAGGGCAGTGCCTCA
 GGATGGGGACTCCGGCCACTGCAGAGCCAGACCCCCAGCAACAAAGTGGGCCTCAGCAAGGCCTCTCT
 CTGAGGAGATGCGCGTAAGGAGGCACAAGCACAGCTCGGAGTCCCAGGGAGAGACAAGGGGCGACTGGC
 TAAGCTCAAGCCTGCCCCGCGCCTCTCTGCTGCACAGGAAAAGCAGGCAAGCCCGCACAGAGCCCC
 AGCCAAGAGGCCGGGAGGCAGGGGGGCCACAAAAGACAAAATGCACGAGTCTGGCTATGGATGTGTGA
 AACTGACCCACCAAGCCGGCCACCTGGAGAAGGACTGAGAAAGCCTGTGCCCCATCTGTGCCAAA
 GCCCCAGTCGACGGCTAAGCCTCCAGGGACTCCACCAGCCCGGTCTCCACCCCTCCACAGCACCAGCT
 CCTTACCCTGGCTGGGACCAGCAGCCATCTTCTGCCCTTCCATCCCTCATATCAACCCGTGTGT
 CTCTTAGGAAGACCCGCCAGCCAGAGCGCATTGCCAGTGGCACCATCAACAAAGGTTGGTTTGGGA
 CAGTACTGAGGCCCTGTGCTTGCATCTCCCGAACTCAGAGCAGATGGCCAGCCACAGTGTCTGTACTG
 GAGGCTGGCAAGAACCTGTACACTTTCTGTGTGAGCTATGTGACTCTATCCAGCAGATGAGGAACAAGT
 TTGCTTCCGTGAGGCTATCAACAAGCTGGAGAGCAACCTCCGAGAGCTGCAGATCTGCCCTGCCACAGC
 CTCCAGTGGGCCAGTGCCACCAAGACTTCAGCAAGCTGCTCAGCTCTGTGAAGGAGATCAGCGACATT
 GTCCGGAGG

ACGCGTACGCGGCCGCTCGAG - GFP Tag - GTTTAA

Protein Sequence:

>MG225650 representing NM_009594
 Red=Cloning site Green=Tags(s)

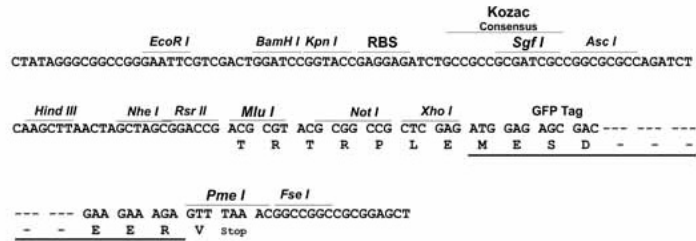
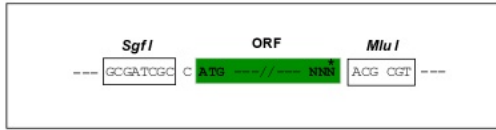
MLEICLKLVGCKSKKGLSSSSCYLEEALQRPVASFEPQGLSEARWNSKENLLAGPSENDPNLFVALY
 DFVASGDNTLSITKGEKLRVLGYNHNGEWCEAQTKNGQGWVPSNYITPVNSLEKHSWYHGPVSRNAEYL
 LSSGINGSFLVRESESSPGQRSISLRYEGRVYHYRINTASDGKLYVSSERFNTLAELVHHHSTVADGLI
 TTLHYPAPKRKPTIYGVSPPNYDKWEMERTDITMKHKLGGGQYGEVYEGVWKKYSLTVAVKTLKEDTMEV
 EEFLKEAAVMKEIKHPNLVQLLGVCTREPPFYIITEFMTYGNLLDYLRECNRQEVSAVVLLYMATQISSA
 MEYLEKKNFIHRDLAARNCLVGENHLVKVADFGLSRLMTGDTYTAHAGAKFPIKWTAPESLAYNKF SIKS
 DVWAFGVLLWEIATYGMSPYPGIDL SQVYELLEKDYRMERPEGCPEKVYELMRACWQWNPDRPSFAEIH
 QAFETMFQESSISDEVEKELGKRGRTRGGAGSMLQAPELPTKTRTRCRAAEQKDAPDTPPELLHTKGLGESD
 ALDSEPAVSPLLPRKERGPPDGLNEDERLLPRDRKTNLFSALIKKKKMAPTPPKRSSSFREMDGQPD
 RGASEDDSRELNGPPALTSDAEPTKSPKASNGAGVPNGAFREPGNSGFRSPHMWKKSSLTGSRALAA
 EEE SGMSSSKRFLRSCSASCMPHGARDTEWRSVTLPRDLP SAGKQFDSSTFGGHKSEKPALPRKRTSESR
 SEQVAKSTAMPPPRLVKKNEEAEEGFKDTESPSSPPSLTPKLLRRQVTA SPSSGLSHKKEEATKGSAS
 GMGTAPATAEPAPPSNKVGLSKASSEEMRVRHKSSESPGRDKRLAKLKPAPPPPACTGKAGKPAQSP
 SQEAGEAGGPTKTKTSLAMDVAVNTDPTKAGPPGEGLRKPVPSPVPKPQSTAKPPGTPTSPVSTPSTAPA
 PSPLAGDQQPSSAAFIPLI STRVSLRKTRQPPERIASGITKGVVLDSTEALCLAI SRNSEQMASHSAVL
 EAGKNLYTFCVSYVDSIQMRNKF AFREAINKLESNLRELQICPATASSGPAATQDFSKLLSSVKEISDI
 VRR

TRTRPLE - GFP Tag - V

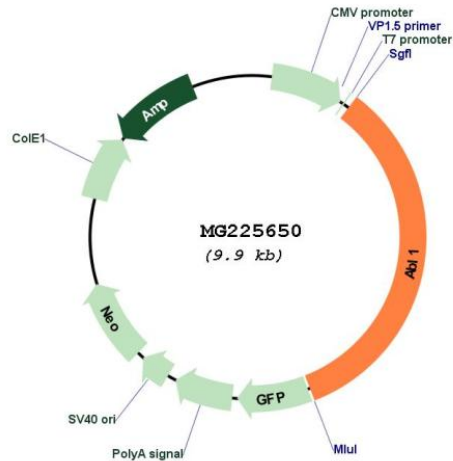
Restriction Sites: SgfI-MluI

Cloning Scheme:

Cloning sites used for ORF Shuttling:



Plasmid Map:



ACCN: NM_009594

ORF Size: 3369 bp

OTI Disclaimer: The molecular sequence of this clone aligns with the gene accession number as a point of reference only. However, individual transcript sequences of the same gene can differ through naturally occurring variations (e.g. polymorphisms), each with its own valid existence. This clone is substantially in agreement with the reference, but a complete review of all prevailing variants is recommended prior to use. [More info](#)

OTI Annotation: This clone was engineered to express the complete ORF with an expression tag. Expression varies depending on the nature of the gene.

Components: The ORF clone is ion-exchange column purified and shipped in a 2D barcoded Matrix tube containing 10ug of transfection-ready, dried plasmid DNA (reconstitute with 100 ul of water).

Reconstitution Method:

1. Centrifuge at 5,000xg for 5min.
2. Carefully open the tube and add 100ul of sterile water to dissolve the DNA.
3. Close the tube and incubate for 10 minutes at room temperature.
4. Briefly vortex the tube and then do a quick spin (less than 5000xg) to concentrate the liquid at the bottom.
5. Store the suspended plasmid at -20°C. The DNA is stable for at least one year from date of shipping when stored at -20°C.

RefSeq: [NM_009594.4](#), [NP_033724.2](#)

RefSeq Size: 5792 bp

RefSeq ORF: 3372 bp

Locus ID: 11350

UniProt ID: [P00520](#)

Cytogenetics: 2 B

Gene Summary:

Non-receptor tyrosine-protein kinase that plays a role in many key processes linked to cell growth and survival such as cytoskeleton remodeling in response to extracellular stimuli, cell motility and adhesion, receptor endocytosis, autophagy, DNA damage response and apoptosis. Coordinates actin remodeling through tyrosine phosphorylation of proteins controlling cytoskeleton dynamics like WASF3 (involved in branch formation); ANXA1 (involved in membrane anchoring); DBN1, DBNL, CTTN, RAPH1 and ENAH (involved in signaling); or MAPT and PXN (microtubule-binding proteins). Phosphorylation of WASF3 is critical for the stimulation of lamellipodia formation and cell migration. Involved in the regulation of cell adhesion and motility through phosphorylation of key regulators of these processes such as BCAR1, CRK, CRKL, DOK1, EFS or NEDD9. Phosphorylates multiple receptor tyrosine kinases and more particularly promotes endocytosis of EGFR, facilitates the formation of neuromuscular synapses through MUSK, inhibits PDGFRB-mediated chemotaxis and modulates the endocytosis of activated B-cell receptor complexes. Other substrates which are involved in endocytosis regulation are the caveolin (CAV1) and RIN1. Moreover, ABL1 regulates the CBL family of ubiquitin ligases that drive receptor down-regulation and actin remodeling. Phosphorylation of CBL leads to increased EGFR stability. Involved in late-stage autophagy by regulating positively the trafficking and function of lysosomal components. ABL1 targets to mitochondria in response to oxidative stress and thereby mediates mitochondrial dysfunction and cell death. In response to oxidative stress, phosphorylates serine/threonine kinase PRKD2 at 'Tyr-717' (By similarity). ABL1 is also translocated in the nucleus where it has DNA-binding activity and is involved in DNA-damage response and apoptosis. Many substrates are known mediators of DNA repair: DDB1, DDB2, ERCC3, ERCC6, RAD9A, RAD51, RAD52 or WRN. Activates the proapoptotic pathway when the DNA damage is too severe to be repaired. Phosphorylates TP73, a primary regulator for this type of damage-induced apoptosis. Phosphorylates the caspase CASP9 on 'Tyr-191' and regulates its processing in the apoptotic response to DNA damage. Phosphorylates PSMA7 that leads to an inhibition of proteasomal activity and cell cycle transition blocks. Regulates T-cell differentiation in a TBX21-dependent manner (PubMed:21690296). Phosphorylates TBX21 on tyrosine residues leading to an enhancement of its transcriptional activator activity (PubMed:21690296).[UniProtKB/Swiss-Prot Function]