

Product datasheet for **MG225603**

Dnmt3b (NM_001003963) Mouse Tagged ORF Clone

Product data:

Product Type:	Expression Plasmids
Product Name:	Dnmt3b (NM_001003963) Mouse Tagged ORF Clone
Tag:	TurboGFP
Symbol:	Dnmt3b
Synonyms:	MmullIB
Mammalian Cell Selection:	Neomycin
Vector:	pCMV6-AC-GFP (PS100010)
E. coli Selection:	Ampicillin (100 ug/mL)



[View online »](#)

ORF Nucleotide Sequence:

>MG225603 representing NM_001003963
 Red=Cloning site Blue=ORF Green=Tags(s)

TTTTGTAATACGACTCACTATAGGGCGGCCGGAATTCGTCGACTGGATCCGGTACCGAGGAGATCTGCC
 GCC**CGCATCGCC**

ATGAAGGGAGACAGCAGACATCTGAATGAAGAAGAGGGTGCCAGCGGGTATGAGGAGTGCATTATCGTTA
 ATGGGAACCTTCAGTGACCAGTCCCTCAGACACGAAGGATGCTCCCTCACCCCAAGTCTTGGAGGCAATCTG
 CACAGAGCCAGTCTGCACACCAGAGACAGAGGCCGAGGTCAAGCTCCCGGCTGTCTAAGAGGGAGGTC
 TCCAGCCTTCTGAATTACACGCAGGACATGACAGGAGATGGAGACAGAGATGATGAAGTAGATGATGGGA
 ATGGCTCTGATATTCTAATGCCAAAGCTCACCCGTGAGACCAAGGACACCAGGACGCGCTCTGAAAGCCC
 GGCTGTCCGAACCCGACATAGCAATGGGACCTCCAGCTTGAGAGGGCAAAGAGCCTCCCCAGAATCACC
 CGAGGTCGGCAGGGCCGCCACCATGTGCAGGAGTACCCTGTGGAGTTTCCGGCTACCAGGTCTCGGAGAC
 GTCGAGCATCATCTTCAGCAAGCAGCCATGGTCATCCCCTGCCAGCGTCGACTTCATGGAAGAAGTGAC
 ACCTAAGAGCGTCAGTACCCCATCAGTTGACTTGAGCCAGGATGGAGATCAGGAGGTATGGATACCACA
 CAGGTGGATGCAGAGAGCAGAGATGGAGACAGCACAGAGTATCAGGATGATAAAGAGTTTGGAAAGGTTG
 ACCTCGTGTGGGAAAGATCAAGGGCTTCTCCTGGTGGCCTGCCATGGTGGTGTCTGAAAGGCCACCTC
 CAAGCGACAGGCCATGCCCGAATGCGCTGGGTACAGTGGTTTGGTGATGGCAAGTTTTCTGAGATCTCT
 GCTGACAAACTGGTGGCTCTGGGGCTGTTAGCCAGCACTTAACTCTGGTACCTTCAATAAGCTGGTTT
 CTTATAGGAAGGCCATGTACCACACTCTGGAGAAAAGCCAGGGTTCGAGCTGGCAAGACCTTCTCCAGCAG
 TCCTGGAGAGTCACTGGAGGACCAGCTGAAGCCCATGCTGGAGTGGGCCACGGTGGCTTCAAGCCTACT
 GGGATCGAGGGCCTCAAACCCAAAGAAGCAACCAGTGGTTAATAAGTGAAGTGCCTGCTTCCAGACA
 GTAGGAACCTAGAACCCAGGAGACGCGAGAACAAGTGAAGACGCACAACCAATGACTCTGCTGCTTC
 TGAGTCCCCCACCACCAAGCGCCTCAAGACAAATAGCTATGGCGGGAAGGACCGAGGGGAGGATGAGGAG
 AGCCGAGAACGGATGGCTTCTGAAGTACCAACAACAAGGGCAATCTGGAAGACCCTGTTTGTCTGTG
 GAAAGAAGAACCCTGTGTCTTCCACCCCTCTTTGAGGGTGGGCTCTGTGAGAGTTGCCGGATCGCTT
 CCTAGAGCTCTTCTACATGTATGATGAGGACGGCTATCAGTCTACTGCACCGTGTGCTGTGAGGGCCGT
 GAACTGCTGCTGTGCAGTAACACAAGCTGCTGCAGATGCTTCTGTGTGGAGTGTCTGGAGGTGCTGGTGG
 GCGCAGGCACAGCTGAGGATGCCAAGCTGCAGGAACCCTGGAGCTGCTATATGTGCTCCCTCAGCGCTG
 CCATGGGGTCTCCGACGCAGGAAAGATTGGAACATGCGCCTGCAAGACTTCTTCACTACTGATCCTGAC
 CTGGAAGAATTTGAGCCACCAAGTTGTACCCAGCAATTCCTGCAGCCAAAAGGAGGCCATTAGAGTCC
 TGTCTCTGTTTGTGAATTGCAACGGGTAATGGTGTCAAGGAGTTGGGTATTAAGTGGAAAAGTA
 CATTGCCTCCGAAGTCTGTGCAGAGTCCATCGCTGTGGGAATGTTAAGCATGAAGGCCAGATCAATAT
 GTCAATGACGTCCGAAAATCACCAAGAAAAATATTGAAGAGTGGGGCCCGTTTCCACTTGGTGATTGGTG
 GAAGCCCATGCAATGATCTCTTAACGTCAATCCTGCCCGCAAAGGTTTATATGAGGGCACAGGAAGGCT
 CTTCTTCGAGTTTTACCACTTGTGAATTATACCCGCCCAAGGAGGGCGACAACCGTCCATTCTTCTGG
 ATGTTTCGAGAATGTTGTGGCCATGAAAGTGAATGACAAGAAAGACATCTCAAGATTCCTGGCATGTAACC
 CAGTGATGATCGATGCCATCAAGGTGTCTGCTGCTCACAGGGCCCGTACTTCTGGGGTAACCTACCCGG
 AATGAACAGGATCTTCGGCTTCCCTGCTCACTACACGGACGTGTCCAACATGGGCCGCGGCCCGCTCAG
 AAGCTGCTGGCAGGTCTGGAGGTACCGGTATCAGACACCTGTTTGGCCCTGAAGGACTACTTTG
 CCTGTGAA

ACGCGTACGCGGCCGCTCGAG – GFP Tag – GTTTAA

Protein Sequence: >MG225603 representing NM_001003963
Red=Cloning site Green=Tags(s)

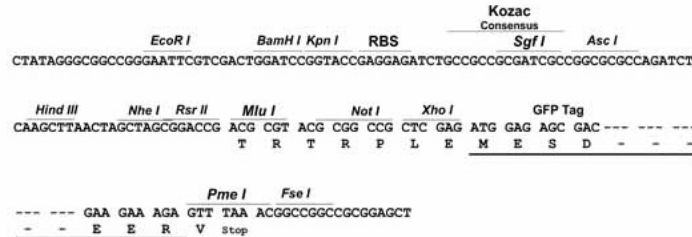
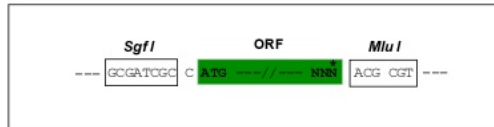
```
MKGDSRHLNEEGASGYEECIIVNGNFSDQSSDTKDAPSPVLEAICTEPVCTPETRGRSSSRLSKREV
SSLLNYTQDMTGDGDRDDEVDDGNGSDILMPKL TRETKDTRRSESPAVRTRHSNGTSSLERQRASPRIT
RGRQGRHHVQEYPVEFPATRSRRRRASSASTPWSSPASVDFMEEVTPKSVSTPSVDLSQDGDQEGMDTT
QVDAESRDGDSTEYQDDKEFGIGDLVWGKIKGFSWWPAMVVSWKATSKRQAMPGMRVWQWFGDGKFSEIS
ADKLVALLGLFSQHFNLATFNKLVSYRKAMYHTLEKARVRAGKTFSSSPGESLEDQLKPMLEWAHGGFKPT
GIEGLKPNKKQPVVNKSKVRRSDSRNLEPRRRRENKSRRTTNDSSAASESPPPKRLKTNSYGGKDRGEDEE
SRERMASEVTNNKGNLEDRCLSCGKKNPVSFHPLFEGGLCQSCRDRFLELFMYDEDEGYQSYCTVCCEGR
ELLCSNTSCRCFCVECLEVLVGAGTAEDAKLQEPWSCYMCLPQRCHGVLRRRKDWNMRLQDFFTTDPD
LEEFEPKLYPAIPAARRRPIRVLSLFDGIATGYLVKELGIKVEKYIASEVCAESIAVGTVKHEGQIKY
VNDVRKITKKNIEEWGPFDLVIGGSPCNDLSNVNPARKGLYEGTGRLFFEFYHLLNYTRPKEGDNRPFFW
MFENVVAMKVNDKDISRFLACNPVMIDAIKVSAAHRARYFWGNLPGMNRIFGFPAHYTDVSNMGRGARQ
KLLGRSWSVPVIRHLFAPLKDYFACE
```

TRTRPLE - GFP Tag - V

Restriction Sites: Sgfl-MluI

Cloning Scheme:

Cloning sites used for ORF Shutting:



- ACCN:** NM_001003963
- ORF Size:** 2388 bp
- OTI Disclaimer:** The molecular sequence of this clone aligns with the gene accession number as a point of reference only. However, individual transcript sequences of the same gene can differ through naturally occurring variations (e.g. polymorphisms), each with its own valid existence. This clone is substantially in agreement with the reference, but a complete review of all prevailing variants is recommended prior to use. [More info](#)
- OTI Annotation:** This clone was engineered to express the complete ORF with an expression tag. Expression varies depending on the nature of the gene.
- Components:** The ORF clone is ion-exchange column purified and shipped in a 2D barcoded Matrix tube containing 10ug of transfection-ready, dried plasmid DNA (reconstitute with 100 ul of water).

Reconstitution Method:

1. Centrifuge at 5,000xg for 5min.
2. Carefully open the tube and add 100ul of sterile water to dissolve the DNA.
3. Close the tube and incubate for 10 minutes at room temperature.
4. Briefly vortex the tube and then do a quick spin (less than 5000xg) to concentrate the liquid at the bottom.
5. Store the suspended plasmid at -20°C. The DNA is stable for at least one year from date of shipping when stored at -20°C.

RefSeq: [NM_001003963.4](#), [NP_001003963.2](#)

RefSeq Size: 4138 bp

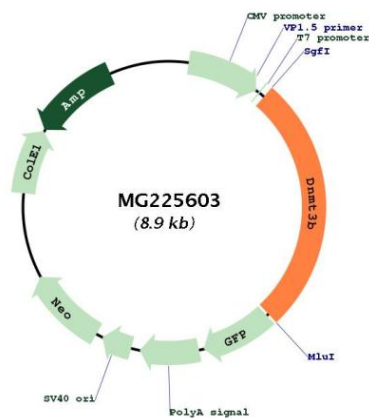
RefSeq ORF: 2391 bp

Locus ID: 13436

Cytogenetics: 2 H1

Gene Summary: This is one of two related genes encoding de novo DNA methyltransferases, which are responsible for the establishment of DNA methylation patterns in embryos. Loss of function of this gene results in severe developmental defects and loss of viability. Mutation of the related gene in humans causes immunodeficiency-centromeric instability-facial anomalies (ICF) syndrome. There is a pseudogene for this gene located adjacent to this gene in the same region of chromosome 2. Alternatively spliced transcript variants encoding multiple isoforms have been observed. [provided by RefSeq, Nov 2012]

Product images:



Circular map for MG225603