

Product datasheet for **MG225586**

Etv4 (NM_008815) Mouse Tagged ORF Clone

Product data:

Product Type:	Expression Plasmids
Product Name:	Etv4 (NM_008815) Mouse Tagged ORF Clone
Tag:	TurboGFP
Symbol:	Etv4
Synonyms:	AW414408; Pea-3; Pea3
Mammalian Cell Selection:	Neomycin
Vector:	pCMV6-AC-GFP (PS100010)
E. coli Selection:	Ampicillin (100 ug/mL)



[View online »](#)

ORF Nucleotide Sequence:

>MG225586 representing NM_008815
 Red=Cloning site Blue=ORF Green=Tags(s)

TTTTGTAATACGACTCACTATAGGGCGGCCGGGAATTCGTCGACTGGATCCGGTACCGAGGAGATCTGCC
 GCC**CGGATCGCC**

ATGGAGCGGAGGATGAAAGGCGGATACTTGGACCAGCGAGTGCCTACACCTTCTGCAGCAAATCTCCCG
 GAAATGGGAGCTTGGGCGAAGCGCTGATGGTCCCGCAGGGAAAGCTCATGGACCCGGGCTCCTGCCGCG
 TTCGACTCAGAAGATCTCTCCAGGACCTCAGTCACTTCCAAGAGACGTGGCTCGCAGAAGCTCAGGTA
 CCGGACAGTGATGAGCAGTTTGTCTGATTTCCATTAGAAAATCTTTCCATAGCCCCACCACCAGGA
 TCAAGAAGGAACCCAGAGTCCCGCACAGACCCCGCCCTGTCTGCAGCAGGAAGCCACCCTCCCTA
 CCACCATGGAGAGCAGTGCCTTTACTCCAGTGCCTATGACTCCCCAGACAAATCGCCATCAAGTCCCC
 GCCCCCGTGGCCCTGGACAGTGCCTTGCAGCCCTTTCCAGGGCAGAACAGCAGCAGAGCCTCCTGA
 GAGCCTCCAGCTTCCAGTCCACCCGGCCACGGGTACCTTGGTGGACAGCTCCGCTTCCAGCA
 GCCCGTGGACATGTGCCACTCCTCACATCTCCTCAGGGAGGGGGCCGGGAACCTCTCCAGCCCCCTAT
 CAACACCAACTGTCGGAGCCCTGCCACCTACCCCGCAGAGAATTTCAAGCAGGAGTACCATGACCCCC
 TGTACGAACAGGCTGGCCAGCCCGCTTCAAGCCAGGGTGGGGTCAAGTGGGCACAGGTACCCAGGGCGGG
 GGTGGTGTCAAACAGGAGCGCACAGACTTCGCCTACGACTCAGATGTCCCTGGATGTGCATCAATGTAC
 CTCCACCCAGAGGGCTTCTCTGGACCCTCTCCAGGTGATGGAGTATGGGTTATGGCTATGAAAAATCCC
 TTCGACCATTTCCAGATGATGTCTGCATTGTCCCTGAAAAATTTGAAGGAGACATCAAGCAGGAAGGGAT
 TGGAGCTTTCGGGAGGGGCCACCCTACCAGCGCCGGGGTGCCTTACAAGTGGCAGTTTCTGGTGGCC
 CTGCTGGATGACCAACAAATGCTCATTTCATTGCTTGGACAGGCCGGGAATGGAGTTTAACTAATTG
 AACCTGAAGAGGTTGCCAGGCTCTGGGGTATCCAGAAGAACCAGCCATGAATTATGACAAGCTGAG
 CCGCTCGCTGCGATACTATTATGAGAAAGCATCATGCAGAAGGTGGCTGGCGAACGCTACGTGTACAAG
 TTTGTGTGCGAGCCGGAGGCCCTGTTCTCTGTCCTCCAGATAATCAACGTCCAGCTCTGAAGGCTG
 AGTTTGACCGCCAGTCAAGTGGAGGACACAGTCCCTTTGTCCACTTGGATGAGAGTCTGCCTACCT
 CCCAGAACTCACTGGCCCGCTCCGCCCTTCGGCCACAGAGGTGGATATTCTTAC

ACGCGTACGCGGCCGCTCGAG - GFP Tag - GTTTAA

Protein Sequence:

>MG225586 representing NM_008815
 Red=Cloning site Green=Tags(s)

MERRMGGYLDQRPVYTFCSKSPGNLSLGEALMVPQKLMDPGSLPPSDSEDLFQDL SHFQETWLAEAQV
 PDSDEQFVPDFHSENFHSPTRIKKEPQSPRTDPALSCSRKPLPYHHGEQCLYSSAYDSPRQIAIKSP
 APGAPGQSPLQPF SRAEQQSLLRASSSSQSHPGHYLGEHSSVFQQPVDMCHSF TSPQGGGREPLPAPY
 QHQLSEPCPPYPQNFKQYHDPLYEQAGQPASSQGGVSGHRYPGAGVVIKQERTDFAYDSVPGCASMY
 LHPEGFSGPSPGDGVMGYEYKSLRPFDDVCI VPEKFEGDIKQEGIGAFREGPPYQRRGALQLWQFLVA
 LLDDPTNAHFIAWTGRGMEFKLIEPEEVARLWGIQKNRPAMNYDKLSRSLRYYYEKIMQKVAGERVYVK
 FVCEPEALFSLAFPDNQRPAKAEFDRPVSEEDTVPLSHLDESPAYLPELTGPAPPFGHRGGYSY

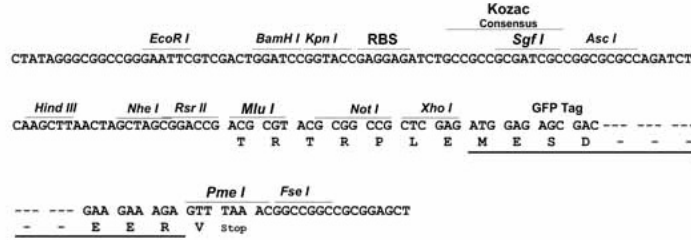
TRTRPLE - GFP Tag - V

Restriction Sites:

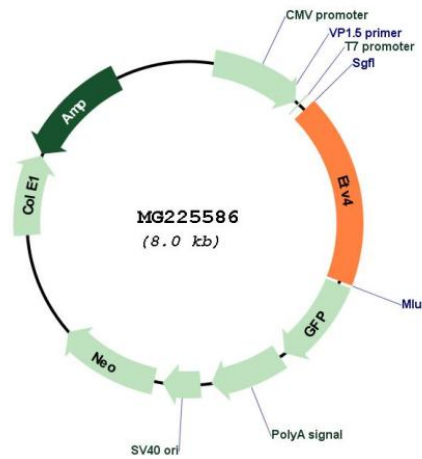
Sgfl-MluI

Cloning Scheme:

Cloning sites used for ORF Shutting:



Plasmid Map:



ACCN: NM_008815
 ORF Size: 1455 bp

OTI Disclaimer:	<p>Due to the inherent nature of this plasmid, standard methods to replicate additional amounts of DNA in E. coli are highly likely to result in mutations and/or rearrangements. Therefore, OriGene does not guarantee the capability to replicate this plasmid DNA. Additional amounts of DNA can be purchased from OriGene with batch-specific, full-sequence verification at a reduced cost. Please contact our customer care team at custsupport@origene.com or by calling 301.340.3188 option 3 for pricing and delivery.</p> <p>The molecular sequence of this clone aligns with the gene accession number as a point of reference only. However, individual transcript sequences of the same gene can differ through naturally occurring variations (e.g. polymorphisms), each with its own valid existence. This clone is substantially in agreement with the reference, but a complete review of all prevailing variants is recommended prior to use. More info</p>
OTI Annotation:	<p>This clone was engineered to express the complete ORF with an expression tag. Expression varies depending on the nature of the gene.</p>
Components:	<p>The ORF clone is ion-exchange column purified and shipped in a 2D barcoded Matrix tube containing 10ug of transfection-ready, dried plasmid DNA (reconstitute with 100 ul of water).</p>
Reconstitution Method:	<ol style="list-style-type: none">1. Centrifuge at 5,000xg for 5min.2. Carefully open the tube and add 100ul of sterile water to dissolve the DNA.3. Close the tube and incubate for 10 minutes at room temperature.4. Briefly vortex the tube and then do a quick spin (less than 5000xg) to concentrate the liquid at the bottom.5. Store the suspended plasmid at -20°C. The DNA is stable for at least one year from date of shipping when stored at -20°C.
RefSeq:	<p>NM_008815.3, NP_032841.2</p>
RefSeq Size:	<p>2336 bp</p>
RefSeq ORF:	<p>1458 bp</p>
Locus ID:	<p>18612</p>
UniProt ID:	<p>P28322</p>
Cytogenetics:	<p>11 65.48 cM</p>
Gene Summary:	<p>Transcriptional activator that binds to the enhancer of the adenovirus E1A gene; the core-binding sequence is 5'[AC]GGA[AT]GT-3'. May play a regulatory role during embryogenesis. [UniProtKB/Swiss-Prot Function]</p>