

Product datasheet for **MG225585**

Dusp16 (NM_001048054) Mouse Tagged ORF Clone

Product data:

Product Type:	Expression Plasmids
Product Name:	Dusp16 (NM_001048054) Mouse Tagged ORF Clone
Tag:	TurboGFP
Symbol:	Dusp16
Synonyms:	3830417M17Rik; AW558566; D6Ertd213e; MKP-7; MKP7; Mkp7m
Mammalian Cell Selection:	Neomycin
Vector:	pCMV6-AC-GFP (PS100010)
E. coli Selection:	Ampicillin (100 ug/mL)
ORF Nucleotide Sequence:	>MG225585 representing NM_001048054 Red=Cloning site Blue=ORF Green=Tags(s)

TTTTGTAATACGACTCACTATAGGGCGGCCGGAATTCGTCGACTGGATCCGGTACCGAGGAGATCTGCC
GCC**CGATCGCC**

ATGGCCCATGAGATGATTGGAACCAAATTGTTACTGAGAGCTTGGTGGCTCTGCTGGAAAGTGGAAACGG
AAAAAGTGTCTAATTGATAGCCGACCATTTGTGGAATACAATACGTCTCACATTTTGGAAAGCCATTAA
TATCAACTGCTCCAACTGATGAAGCGAAGGTTGCAACAGGACAAAGTATTAATTACAGAAGTATCCAA
CATTCTGCAAAGCATAAGGTTGACATTGACTGCAATCAGAAGGTGGTAGTTTATGATCAAAGTTCCCAAG
ATGTTGGTTCTCTGTCGTCAGACTGCTTCTCACTGTACTTCTGGGTAACCTGGAGAGGAGCTTCAACTC
TGTCACCTGCTTGCAGGTGGCTTTGCTGAGTTCTCTCGTTGTTCCCTGGCCTCTGTGAAGGAAAGTCC
ACTCTAGTCCCTACCTGCATATCTCAGCCTTGCTTACCTGTTGCGAACATTGGGCCAACTCGAATTTCTC
CCAATCTCTATCTTGGCTGCCAGCGAGATGTCCTCAACAAGGACCTGATGCAACAGAATGGGATTGGCTA
TGTGTTAAATGCCAGCAATACCTGTCCAAAGCCTGACTTCATACCTGAATCTCACTTCTGCGAGTGGCT
GTGAATGACAGCTTTTGTGAGAAAATCCTACCATGGTTGGACAAGTCTGTGGATTTCAATTGAGAAAGCAA
AAGCCTCCAATGGCTGTGTGCTTATCCACTGCTTAGCTGGGATCTCTCGTCCGCCACTATTGCTATTGC
CTACATCATGAAGAGGATGGACATGTCTAGATGAGGCTTACAGGCGGCAGAAAGCCTACTGACAGAGCT
GACTCGAGGCGGAGCTGGCATGAAGAGAGCCCTTTGAAAAGCAGTTTAAACGCAGAAGCTGCCAAATGG
AATTTGGAGAGACATTATGTCGGAGAACAGGTCAGGGAGGAGCTGGCAAGGTTGGCGAGCCAGTCCAG
CTTCTCCGGCAGCATGGAGATCATCGAGGTCTCT

ACGCGTACGCGGCCGCTCGAG - GFP Tag - GTTTAA



[View online »](#)

Protein Sequence: >MG225585 representing NM_001048054
 Red=Cloning site Green=Tags(s)

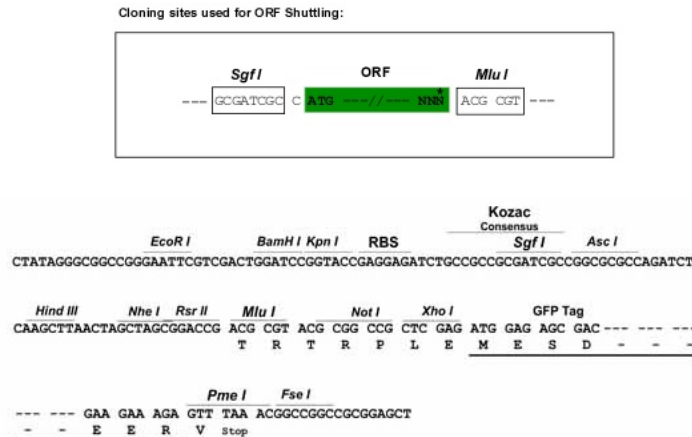
MAHEMIGTQIVTESLVALLESGTEKVLIDSRPFVEYNTSHILEAININCSKLMKRRLQQDKVLITELIQ
 HSAKHKVDIDCNQKVVVYDQSSQDVGSLSSDCFLTVLLGKLSFNSVHLLAGGFAEFSRCFPGLCEGKS
 TLVPTCISQPCLPVANIGPTRILPNLYLGCQRDVLNKDLMQQNGIGYVLNASNTCPKPDFIPESHFLRVP
 VNDSFCEKILPWLDKSVDFIEKAKASNGCVLIHCLAGISRSATIAIAYIMKRMDSLDEAYRRQKPTDRA
 DSRRSWHEESPFEKQFKRRSCQMEFGESIMSENRSREELGKVGSSFSFGSMETIEVS

TRTRPLE - GFP Tag - V

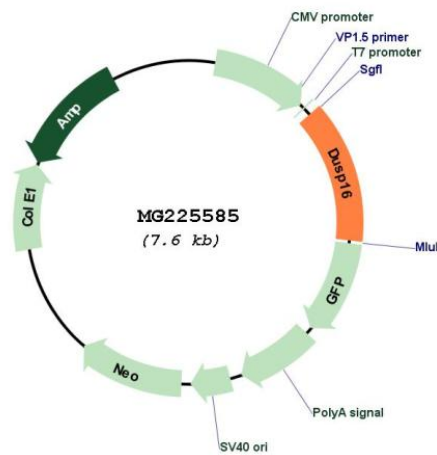
Restriction Sites:

Sgfl-MluI

Cloning Scheme:



Plasmid Map:



ACCN: NM_001048054

ORF Size: 1014 bp

OTI Disclaimer:	The molecular sequence of this clone aligns with the gene accession number as a point of reference only. However, individual transcript sequences of the same gene can differ through naturally occurring variations (e.g. polymorphisms), each with its own valid existence. This clone is substantially in agreement with the reference, but a complete review of all prevailing variants is recommended prior to use. More info
OTI Annotation:	This clone was engineered to express the complete ORF with an expression tag. Expression varies depending on the nature of the gene.
Components:	The ORF clone is ion-exchange column purified and shipped in a 2D barcoded Matrix tube containing 10ug of transfection-ready, dried plasmid DNA (reconstitute with 100 ul of water).
Reconstitution Method:	<ol style="list-style-type: none"> 1. Centrifuge at 5,000xg for 5min. 2. Carefully open the tube and add 100ul of sterile water to dissolve the DNA. 3. Close the tube and incubate for 10 minutes at room temperature. 4. Briefly vortex the tube and then do a quick spin (less than 5000xg) to concentrate the liquid at the bottom. 5. Store the suspended plasmid at -20°C. The DNA is stable for at least one year from date of shipping when stored at -20°C.
RefSeq:	NM_001048054.2
RefSeq Size:	4158 bp
RefSeq ORF:	1017 bp
Locus ID:	70686
Cytogenetics:	6 65.77 cM