

Product datasheet for **MG22553**

Hoxb3 (NM_010458) Mouse Tagged ORF Clone

Product data:

Product Type:	Expression Plasmids
Product Name:	Hoxb3 (NM_010458) Mouse Tagged ORF Clone
Tag:	TurboGFP
Symbol:	Hoxb3
Synonyms:	Hox-2.7
Mammalian Cell Selection:	Neomycin
Vector:	pCMV6-AC-GFP (PS100010)
E. coli Selection:	Ampicillin (100 ug/mL)
ORF Nucleotide Sequence:	>MG22553 representing NM_010458 Red=Cloning site Blue=ORF Green=Tags(s)

TTTTGTAATACGACTCACTATAGGGCGGCCGGAATTCGTCGACTGGATCCGGTACCGAGGAGATCTGCC
GCC**CGATCGCC**

ATGCAGAAAGCCACCTACTACGACAACACCGCAGCTGCGCTCTTCGGAGGCTACTCCTCGTACCCTGGCA
GCAATGGTTTCGGCTACGACGGGCTCCCCAGCCCCCTTCAGGCCGCCACGCACCTGGAGGGTGACTA
CCAGCGCTCAGCGTGTCTCTGCAGTCCCTGGGCAACGCCGCCACATGCCAAGAGCAAGGAGCTCAAT
GGCAGCTGCATGAGGCCAGGCCGGCCCCAGAGCCCTGCCGCACCTCCGGGCTCACCCCCACCCAGCG
CCGCACCTACCAGTACCCTAGCAACAGCAATAACGGGGGTGGGCCAGCAAAGCGGCCCCCCCAAGTG
CGGTGCCGGCTCCAACCTCACCCCTACCAAACAGATATTCCTCGATGAAAGAGTCGAGGCAAACGTCC
AAGCTGAAAAACAGCTCCCCCGGCACAGCAGAAGGTTGTGGTGGTGGCGGCGGGTGGTGGCGGGCGG
GCGGGCGTGGCGGCGGCAGCAGCGGGCGGGGGCGGGCGGGCGGGGGAGGGGACAAGAGCCCCCGGG
GTCGGCCGCTCAAGCGGGCGGCACGGCGTACACAAGCGCGCAGCTGGTGGAGCTGGAGAAGGAGTTC
CACTTCAACCGTTATTTGTCCGGCCGCGCCGGTTCGAGATGGCCAATCTGCTGAACCTCAGCGAGCGCC
AGATCAAGATCTGGTCCAGAACCGTCGCATGAAGTACAAGAAAGACCAGAAGGCCAAGGGGCTGGCCTC
GTCCTCTGGGGTCCCTCTCCGGCCGGAAGCCCCCGCAGCCCATGCAGTCCACGGCCGGCTTCATGAAC
GCCTTACACTCCATGACCCCCAGCTACGACAGCCCGTCCCACCACTTTCGGCAAAGGCCACCAAGATG
CCTACGCGCTGCCTTCCAACCTACCAGCCCTCTTAAGGGTTGCGGCGCCACAGAAGTACCCCCGAGC
CCCCGGCTCGGAGTATGAGCCCCAGTCTCCTCAAGCTAACGGGGCGCCTACGGGACGCCACCATGCAG
GGCAGTCCGGTGTATGTGGCGGGGGTGGCTACGCGGATCCGCTGCCGCCCTGCCGGCCCTCCCTCT
ACGGCCTCAATCACCTTTCCACCACCCCTCGGGGAACCTGGACTACAACGGGGCGGCCCTATGGGCC
CAACCAGCATCATGGACCCTGTGACCCTACCCACGTACACAGACCTCTCTCTACCACGCACCCGCT
CAGGGTAGAATCCAAGAAGCGCCCAAACCTGACACACCTG

ACGCGTACGCGGCCGCTCGAG - GFP Tag - GTTTAA



[View online »](#)

Protein Sequence: >MG225553 representing NM_010458
 Red=Cloning site Green=Tags(s)

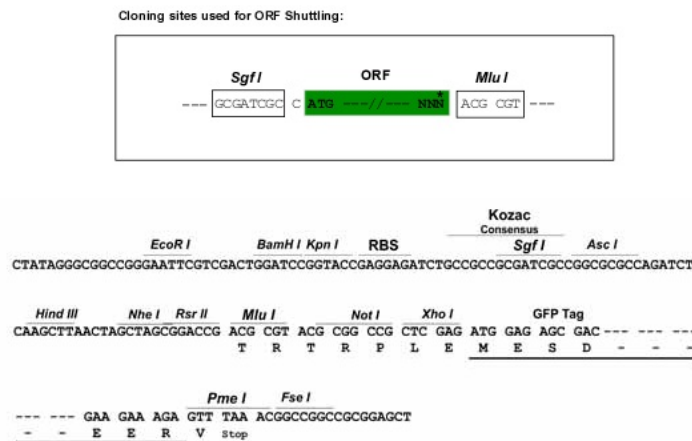
MQKATYYDNTAAALFGGYSSYPGSNGFGYDGPQPFFQAATHLEGDYQRSACSLQSLGNAAPHAWSKELN
 GSCMRPGLAPEPLPAPPGSPPPSAAPTSTTSNSNNGGGPSKSGPPKCGAGSNSTLTKQIFPWMKESRQTS
 KLNKSSPGTAEGCGGGGGGGGGGGGGSSGGGGGGGGGDKSPPGSAASKRARTAYTSAQLVELEKEF
 HFNRYLCRPRRVEMANLLNL SERQIKIWFQNRMKYKDKQAKGLASSSGGPPSPAGSPPQPMQSTAGFMN
 ALHSMTPSYDSPPPAFGKGHQAYALPSNYQPPLKGCAPQKYPPPTASEYEPHVLQANGAYGTPTMQ
 GSPVYVGGGYADPLPPPAGPSLYGLNHLSHHPSGNLDYNGAAMPGNQHHGPCDPHPTYTDLSSHHAPP
 QGRIQEAPKLTHL

TRTRPLE - GFP Tag - V

Chromatograms: https://cdn.origene.com/chromatograms/ja3024_g06.zip

Restriction Sites: SgfI-MluI

Cloning Scheme:



ACCN: NM_010458

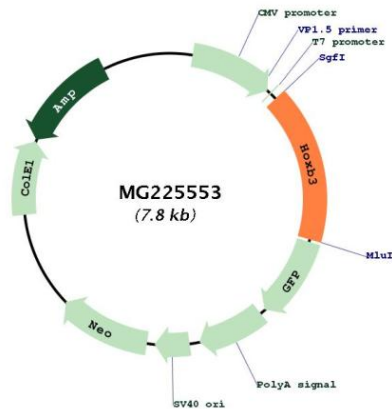
ORF Size: 1299 bp

OTI Disclaimer: Due to the inherent nature of this plasmid, standard methods to replicate additional amounts of DNA in E. coli are highly likely to result in mutations and/or rearrangements. Therefore, OriGene does not guarantee the capability to replicate this plasmid DNA. Additional amounts of DNA can be purchased from OriGene with batch-specific, full-sequence verification at a reduced cost. Please contact our customer care team at custsupport@origene.com or by calling 301.340.3188 option 3 for pricing and delivery.

The molecular sequence of this clone aligns with the gene accession number as a point of reference only. However, individual transcript sequences of the same gene can differ through naturally occurring variations (e.g. polymorphisms), each with its own valid existence. This clone is substantially in agreement with the reference, but a complete review of all prevailing variants is recommended prior to use. [More info](#)

OTI Annotation:	This clone was engineered to express the complete ORF with an expression tag. Expression varies depending on the nature of the gene.
Components:	The ORF clone is ion-exchange column purified and shipped in a 2D barcoded Matrix tube containing 10ug of transfection-ready, dried plasmid DNA (reconstitute with 100 ul of water).
Reconstitution Method:	<ol style="list-style-type: none"> 1. Centrifuge at 5,000xg for 5min. 2. Carefully open the tube and add 100ul of sterile water to dissolve the DNA. 3. Close the tube and incubate for 10 minutes at room temperature. 4. Briefly vortex the tube and then do a quick spin (less than 5000xg) to concentrate the liquid at the bottom. 5. Store the suspended plasmid at -20°C. The DNA is stable for at least one year from date of shipping when stored at -20°C.
RefSeq:	<u>NM_010458.2, NP_034588.2</u>
RefSeq Size:	3313 bp
RefSeq ORF:	1302 bp
Locus ID:	15410
UniProt ID:	<u>P09026</u>
Cytogenetics:	11 59.84 cM
Gene Summary:	Sequence-specific transcription factor which is part of a developmental regulatory system that provides cells with specific positional identities on the anterior-posterior axis. [UniProtKB/Swiss-Prot Function]

Product images:



Circular map for MG225553