

Product datasheet for **MG225549**

Ptger1 (NM_013641) Mouse Tagged ORF Clone

Product data:

Product Type: Expression Plasmids
Product Name: Ptger1 (NM_013641) Mouse Tagged ORF Clone
Tag: TurboGFP
Symbol: Ptger1
Synonyms: 42kDa; EP1; Ptgerp1
Mammalian Cell Selection: Neomycin
Vector: pCMV6-AC-GFP (PS100010)
E. coli Selection: Ampicillin (100 ug/mL)
ORF Nucleotide Sequence: >MG225549 representing NM_013641
 Red=Cloning site Blue=ORF Green=Tags(s)

TTTTGTAATACGACTCACTATAGGGCGGCCGGAATTCGTCGACTGGATCCGGTACCGAGGAGATCTGCC
 GCC**CGATCGCC**

ATGAGCCCTGCGGGCTTAACCTGAGCCTAGCGGATGAGGCAGCAACGTGCGCAACACCCAGGCTCCCCA
 ATACATCTGTGGTGTGCCAACAGGCGATAATGGCACATCACCAGCGCTGCCTATCTTCTCCATGACGCT
 GGGTGTGTGTCCAACGTGCTGGCGTGGCGTCTGGCCAGGTTGCAGGCCAATGCGCGGCCGCCG
 TCGGCTGCCACCTTCTGTTGTTGTCGTCGCCAGCCTGCTTGCCATCGACCTAGCAGGCCATGTGATCCCG
 GCGCCCTGGTGTTCGCCTGTATACTGCGGGCGTGCCTGCTGGAGGGCGTGCATTCTCTGGGTGG
 CTGCATGGTCTTCTCGGCTGTGCCACTTTTGTCTGGCTGTGGCATGGCCGTAGAGCGCTGTGTGGT
 GTCACGCAGCCTGATCCACGCGCGCGCTATCTGTGGCCCGCGCACGCCCTGGCACTAGCCGTGCTGG
 CTGCCATGGCTTTGGCAGTGGCGTGTGCCACTGGTACACGTGGGTGCTACGAGTTACAGTACCCCTGG
 CACCTGGTGTATTAGCCTTGGGCTCGTGGAGGTTGGCGCCAGGCGTTGCTTGGCGGCTCTTCGCC
 GGCCTTGGCCTGGCCGCGCTCCTTGGCATTAGTGTGCAATACGCTCAGCGGCTGGCGCTCCTCCGTG
 CCCGCTGGAGACGGCGTCTCGACGATTCCGAAAGACCGCAGGTCGGATGATCGCCGGCGCTGGGG
 ATCTCGTGGACCCGCTTGGCCTCCGCTCGTCTGCCTCATCCATCACTCAGCCACAGCCACCCCTCCG
 AGCTCTCGGGCGCGGCTCCGCGCCAGGTTACGCACACGATGTGAAATGGTGGCCAGCTCGTGG
 GCATCATGGTGGTGTGTCATCTGCTGGAGCCCTGCTGGTGTGGTGGTGGTGGCCATCGGGGGCTG
 GAACTCTAACTCCCTGCAGCGGCCACTCTTCTGGCTGTACGCTCGCATCGTGGAAACCAGATCCTGGAC
 CCATGGGTGTACATCCTGCTGCGCCAGGCCATGCTGCGCCAAGTCTTCCCTCCTACCCCTGAGGGTCA
 GTGCCAAGGGTGGTCCAACGGAGCTGGCCTAACCAAGAGTGCCTGGGAAGCCAGTTCAGCTAGTTC
 CCGGCACAGTGGTTTCAGTACCTC

ACGCGTACGCGGCCGCTCGAG - GFP Tag - GTTTAA



[View online »](#)

Protein Sequence: >MG225549 representing NM_013641
 Red=Cloning site Green=Tags(s)

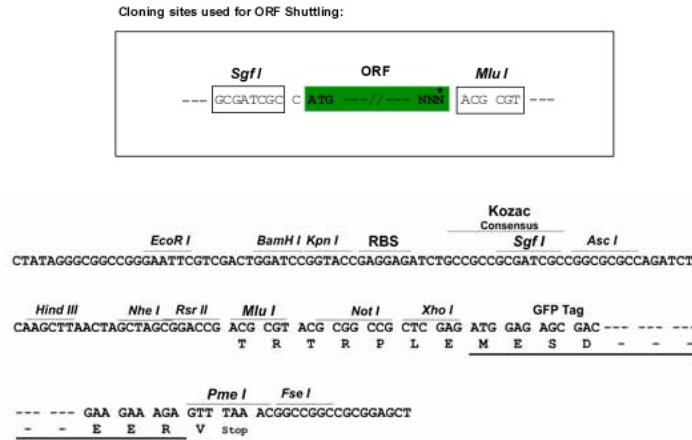
MSPCGLNLSLADEAATCATPRLPNTSVVLPTGDNGTSPALPIFSMTLGAVSNVLALALLAQVAGMRRRR
 SAATFLLFVASLLAIDLGHVIPGALVLRLYTAGRAPAGGACHFLGGCMVFFGLCPLLLGCGMAVERCVG
 VTQPLIHAARVSVARARLALAVLAAMALAVALLPLVHVGRYELQYPGTWCFISLGPRGGWRQALLAGLFA
 GLGLAALLAALVCNTLSGLALLRARWRRRRSRRFRKTAGPDDRRRWGSRGPRLASASSASSITSATATLR
 SSRGGGSARRVHADVEMVQQLVGMVVSICICWSPLLVLVLAIGGWNSNSLQRPLFLAVRLASWNQILD
 PWYIILLRQAMLRQLRLLLPLRVSAKGGPTELGLTKSAWEASSLRSSRHSGFSLH

TRTRPLE - GFP Tag - V

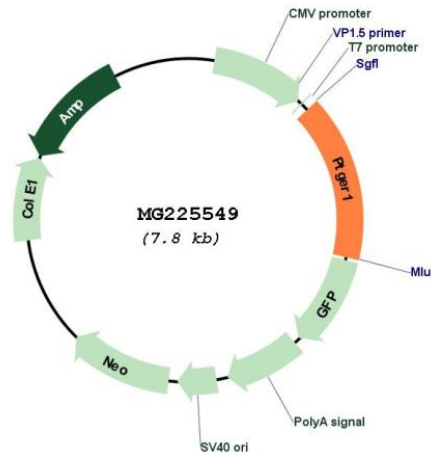
Restriction Sites:

SgfI-MluI

Cloning Scheme:



Plasmid Map:



ACCN:

NM_013641

ORF Size:	1215 bp
OTI Disclaimer:	The molecular sequence of this clone aligns with the gene accession number as a point of reference only. However, individual transcript sequences of the same gene can differ through naturally occurring variations (e.g. polymorphisms), each with its own valid existence. This clone is substantially in agreement with the reference, but a complete review of all prevailing variants is recommended prior to use. More info
OTI Annotation:	This clone was engineered to express the complete ORF with an expression tag. Expression varies depending on the nature of the gene.
Components:	The ORF clone is ion-exchange column purified and shipped in a 2D barcoded Matrix tube containing 10ug of transfection-ready, dried plasmid DNA (reconstitute with 100 ul of water).
Reconstitution Method:	<ol style="list-style-type: none">1. Centrifuge at 5,000xg for 5min.2. Carefully open the tube and add 100ul of sterile water to dissolve the DNA.3. Close the tube and incubate for 10 minutes at room temperature.4. Briefly vortex the tube and then do a quick spin (less than 5000xg) to concentrate the liquid at the bottom.5. Store the suspended plasmid at -20°C. The DNA is stable for at least one year from date of shipping when stored at -20°C.
RefSeq:	NM_013641.3
RefSeq Size:	2082 bp
RefSeq ORF:	1218 bp
Locus ID:	19216
UniProt ID:	P35375
Cytogenetics:	8 40.22 cM
Gene Summary:	Receptor for prostaglandin E2 (PGE2). The activity of this receptor is mediated by G(q) proteins which activate a phosphatidylinositol-calcium second messenger system. May play a role as an important modulator of renal function. Implicated the smooth muscle contractile response to PGE2 in various tissues.[UniProtKB/Swiss-Prot Function]