

Product datasheet for **MG225541**

Odf2 (NM_013615) Mouse Tagged ORF Clone

Product data:

Product Type:	Expression Plasmids
Product Name:	Odf2 (NM_013615) Mouse Tagged ORF Clone
Tag:	TurboGFP
Symbol:	Odf2
Synonyms:	A1848335; MMTEST29
Mammalian Cell Selection:	Neomycin
Vector:	pCMV6-AC-GFP (PS100010)
E. coli Selection:	Ampicillin (100 ug/mL)



[View online »](#)

ORF Nucleotide Sequence:

>MG225541 representing NM_013615
 Red=Cloning site Blue=ORF Green=Tags(s)

TTTTGTAATACGACTCACTATAGGGCGGCCGGAATTCGTCGACTGGATCCGGTACCGAGGAGATCTGCC
 GCC**CGGATCGCC**

ATGTCTGCCTCATCCTCAGGCGGCTCCCCAGGTTCCATCGTGTGGGAAGAACGGAGTAACGAGTCTCA
 CACAGAAAAAAGTCTTGAGAACACCTTGTGGCGCACCCAGTGTAAGTGTACGAAATCTCATAAGCGCGG
 AATGAAAGGGGACACCGTGAATGTACGGCGGAGTGTCCGGGTGAAAACCAAGAATCCACCTCATTGCCTG
 GAGATCACACCACCATCTTCAGAAAAGCTGGTCTCGGTGATGCGATTAAGTGACCTTTCTACAGAAGACG
 ACGATTACGGTCACTGTAAAATGAACCGTTACGATAAGAAGATTGACAGTCTAATGAACGCGGTCGGTTG
 TCTCAAATCTGAGGTCAAGATGCAGAAAGGTGAACGCCAAATGGCCAAAAGGTTCTGGAGGAGAGGAAG
 GAAGAGCTGGAGGAGGTGGCACACGAGCTTGCAGAGACGGAGCATGAGAACACGGTGCTCAGACACAACA
 TCGAGCGTATCAAGGAGGAGAAGGACTTACCATGCTTCAAAGAACAACCTCCAGCAGGAGAAGGAATG
 CCTCATGTCCAACTAGTGGAGGCTGAAATGGATGGAGCAGCTGCTGCCAAGCAGGTCATGGCCTTGAAG
 GATACCATCGGGAAGCTGAAAACCGAGAAAACAGATGACTTGCACCGACATCAACACCTTAAACAAGGCAGA
 AGGAACTTCTCCTGCAGAAGCTGAGTACCTTTGAGGAGACCAATCGCACCTCCGAGATCTGTTGAGGGA
 ACAGCACTGCAAAGAGGATTCCGAGAGACTAATGGAGCAACAAGGTACATTAAGGAGCTCTGGCAGAG
 GCAGACTCAGAGAAAGCGCGCTGCTGTTACTACTGCAAGACAAGGACAAGGAGGTGGAAGAAGTCTCC
 AGGAGATACAATGTGAAAAGGCTCAAGCAAAGACAGCGTCTGAGCTTCCAAGTCCATGGAGTCCATGCG
 GGGCATTTGCAGGCACAGCTTCGCTGCAAAGAGGCTGAGAACAGTCGCCTGTGCATGCAGATCAAGAAC
 TTAGAGCGCAGTGGGAACCAGCATAAAGCGGAAGTAGAGGCCATCATGGAGCAGCTAAAGGAACTGAAGC
 AGAAGGGAGACCGAGACAAAGAGACCTAAAGAAGGCCATCCGAGCCAGAAAAGAGCCGAGGAGAAGAG
 TGAGGAGTATGCCGAGCAGCTGCATGTGCAACTGGCCGACAAGGACCTTATGTTGCTGAAGCTTTATCT
 ACTCTGGAGTCTTGGAGGAGCCGTTACAACCAGGTTGTGAAGGACAAAGGAGATCTTGAAGTGGAGATTA
 TCGTCCTAAATGACCGGGTGACAGATCTTGTAAACCAACAACAAGCTTGGAGGAGAAGATGCGGGAAGA
 CCGGGACAGCTTGGTAGAGAGGCTGCACCGGCAGACGGCTGAGTACTCTGCATTCAAGCTAGAGAACGAG
 AGGCTCAAGGCTAGCTTTGCCCTATGGAGGACAAGCTCAACCAGGCTCACTTGGAGGTTACGACGCTGA
 AGGCGTCAGTGAAGAAGTACGAGGGGATGATAGACAACACAAGGCCAGGTGATGAAAACAAGATTGGA
 GGCTGATGAAGTGGTGCACAGCTAGAGCGCTGCGACAAAGAGAACAAGATGCTTAAAGACGAGATGAAC
 AAAGAGATCGAGGCGCCGTCGCGAGTCCAGTACAGCTGGCTGACCTACAACAGCTGCCTGACATCC
 TCAAGATCACGGAGGCCAAGCTGGCTGAGTGCCAAAGACCAGCTGCAGGGCTACGAGAGGAAGAACATCGA
 CCTCACAGCCATCATTTAGACCTGCGCAGCCGGTAAGGGACTGGCAGAAAGGATCCCACGAACTGGCC
 CGAGCAGGGGCCCGCTTACCGAGA

ACGCGTACGCGGCCGCTCGAG - GFP Tag - GTTTAA

Protein Sequence:

>MG225541 representing NM_013615
 Red=Cloning site Green=Tags(s)

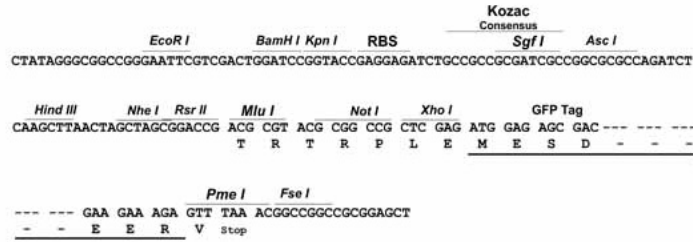
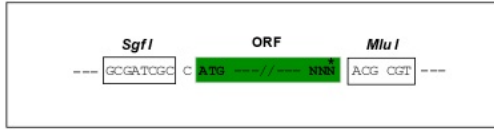
MSASSSGSPRFPSCGKNGVTSLTQKKVLRTPCGAPSVTVTKSHKRGMKGDTVNVRRSVRVKTKNPPHCL
 EITPPSSEKLVSMRLSDLSTEDDDSGHCKMNRDYDKKIDSLMNAVGLKSEVKMQKGERQMAKRFLEERK
 EEELEVAHELAE TEHENTVLRHNIERIKEEKDF TMLQKKHLQQEKECLMSKLVEAEMDGA AAAKQVMALK
 DTIGKLT EKQMTCTDINTL TRQKELL LQKLS TFEETNRTL RDLLREQHCKEDSERLMEQQGTLLKRLAE
 ADSEKARLLLLLQDKDKEVEELLQEIQEKAQAKTASELSKSMESMRGHLQAQLRCKEAENSRLCMQIKN
 LERSGNQHKA EVEAIMEQLKELKQKGD RDKETLKKAIRAQKERA EKSEYAEQLHVQLADKDL YVAEALS
 TLESWRSRYNQVVKDGDLELEIIVLNDRVTDLVNQQLSLEEKMRDRDSLVERLHRQTA EYSAFKLENE
 RLKASFAPMEDKLNQAHLEVQQLKASVKNYEGMIDNYKSQVMKTRLEADEVA AQLERC DKENKMLKDEM N
 KEIEAARRQFQSQLADLQQLPDILKITEAKLAECQDQLQGYERKNIDLTAIISDLRSRVRD WQKGSHELA
 RAGARLPR

TRTRPLE - GFP Tag - V

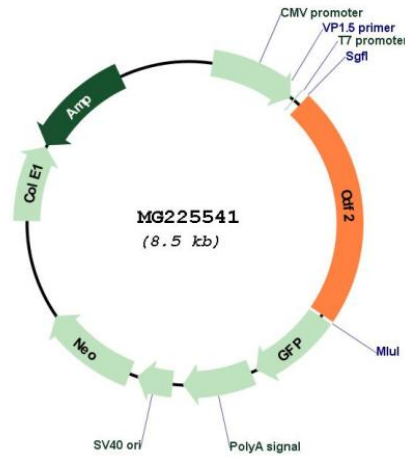
Restriction Sites: SgfI-MluI

Cloning Scheme:

Cloning sites used for ORF Shutting:



Plasmid Map:



ACCN: NM_013615

ORF Size: 1914 bp

OTI Disclaimer:	The molecular sequence of this clone aligns with the gene accession number as a point of reference only. However, individual transcript sequences of the same gene can differ through naturally occurring variations (e.g. polymorphisms), each with its own valid existence. This clone is substantially in agreement with the reference, but a complete review of all prevailing variants is recommended prior to use. More info
OTI Annotation:	This clone was engineered to express the complete ORF with an expression tag. Expression varies depending on the nature of the gene.
Components:	The ORF clone is ion-exchange column purified and shipped in a 2D barcoded Matrix tube containing 10ug of transfection-ready, dried plasmid DNA (reconstitute with 100 ul of water).
Reconstitution Method:	<ol style="list-style-type: none">1. Centrifuge at 5,000xg for 5min.2. Carefully open the tube and add 100ul of sterile water to dissolve the DNA.3. Close the tube and incubate for 10 minutes at room temperature.4. Briefly vortex the tube and then do a quick spin (less than 5000xg) to concentrate the liquid at the bottom.5. Store the suspended plasmid at -20°C. The DNA is stable for at least one year from date of shipping when stored at -20°C.
RefSeq:	NM_013615.3 , NP_038643.1
RefSeq Size:	2391 bp
RefSeq ORF:	1917 bp
Locus ID:	18286
UniProt ID:	A3KGV1
Cytogenetics:	2 20.79 cM
Gene Summary:	Seems to be a major component of sperm tail outer dense fibers (ODF). ODFs are filamentous structures located on the outside of the axoneme in the midpiece and principal piece of the mammalian sperm tail and may help to maintain the passive elastic structures and elastic recoil of the sperm tail. May have a modulating influence on sperm motility. Functions as a general scaffold protein that is specifically localized at the distal/subdistal appendages of mother centrioles. Component of the centrosome matrix required for the localization of PLK1 and NIN to the centrosomes. Required for the formation and/or maintenance of normal CETN1 assembly (By similarity).[UniProtKB/Swiss-Prot Function]